

The IMO Standard wire protector terminal block types 100 and 500 are simple structure PCB type connectors. Models are available with round pins or square solder pins, from 3.50mm and 3.81mm, to 15mm pitches whilst offering the option of 90°, 135°, and 180° wire insertion directions.

The majority of types are available as basic units of 2-pole and 3-pole which allow combining together for any required pole length. The IMO 102 series is only available as a single moulding in fixed pole lengths however, this unit provides the largest wire capacity of this range, that being 4mm².

This product type generally provides the most economical way of using a PCB terminal block and as such is extremely suitable for use in security, lighting and general electronic industries.

Die IMO Klemmleisten 100 und 500 aus der "Standard" Reihe sind unkomplizierte Platinensteckverbinder. Es sind Ausführungen mit Vierkant- oder Rundstift in den Rasterabständen 3,50mm; 3,81mm; 5,00mm; 5,08mm und 10mm erhältlich Kabeleinführung 90°, 135° und 180°.

Größtenteils sind diese Klemmleisten in 2- und 3-poliger Ausführung lieferbar und können so zu verschiedenen Längen kombiniert werden. Lediglich die Reihe IMO 102 ist ausschließlich als Einzelstück mit fester Länge erhältlich, kann dafür aber Adernquerschnitte bis zu 4mm² aufnehmen.

Dieses Produkt ist auf Wirtschaftlichkeit bei der Verwendung von Platinen-Klemmleisten ausgelegt und eignet sich daher für Sicherheitsanwendungen, Beleuchtung und die Elektronikindustrie allgemein.

Les borniers à haute protection de fils types 100 et 500 de la série IMO Standard sont des connecteurs pour circuits imprimés de structure simple. Il existe différents modèles à bornes rondes ou carrées à souder avec pas de 3,50 mm, 3,81 mm, 5 mm, 5,08 mm et 10 mm avec entrée de câble à 90°, 135°, et 180°.

La plupart des borniers existent en version bi- ou tripolaire et peuvent se combiner pour obtenir n'importe quelle longueur. La série IMO 102 existe en une seule longueur fixe, mais elle peut accepter les plus gros câbles dans cette gamme, c'est-à-dire 4 mm².

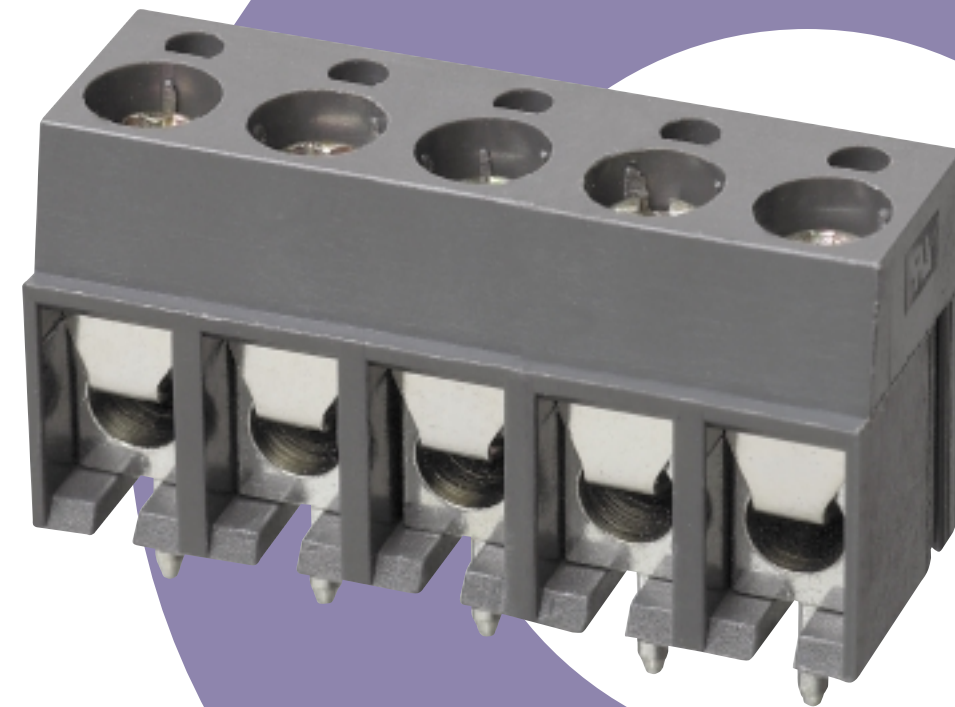
Ce type de produit est généralement le moyen le plus économique d'utiliser un bornier de circuit imprimé et il convient donc particulièrement bien aux industries de la sécurité, de l'éclairage et électronique.

Le morsettiere IMO Standard, con protezione conduttore delle serie 100 e 500 sono connettori a struttura semplice per montaggio su circuito stampato. Sono disponibili, modelli con pin a sezione circolare o quadrata, nei passi 3,50 mm; 3,81 mm; 5,00 mm; 5,08 mm; e 10 mm, con ingresso conduttore a 90°, 135° e 180°.

La maggior parte dei modelli, sono disponibili in versioni a 2 e 3 poli e possono essere liberamente abbinati per ottenere il numero di poli desiderato. La serie IMO 102 è disponibile unicamente in modelli monoblocco con numero di poli fisso. Tuttavia, questa serie consente il collegamento dei conduttori di maggior sezione (4 mm²) di tutta la gamma.

Questo tipo di prodotto, rappresenta generalmente la soluzione più economica per l'utilizzo di morsetti su circuito stampato, ed è pertanto ideale per l'utilizzo in applicazioni di sicurezza, illuminazione ed elettronica generale.

Standard PCB Terminal Blocks Standard PCB Klemmleisten Borniers Standards pour Circuits Imprimés Morsetti da circuito stampato standard



	20.550M	21.550M	20.650M	20.501M	20.500M	21.500M	20.600M	21.600M	20.505M	21.505M	20.605M	21.605M	
Pitch	Höhe	Pas	Passo	3.5mm (3.81mm)		7.00mm		5.00mm		5.00mm (5.08mm)		10.00mm (10.16mm)	
Technical data	Technische Daten	Documentation technique	Dati tecnici	UL	IEC	UL	IEC	UL	IEC	UL	IEC	UL	IEC
Rated voltage	Nennspannung	Tension assignée	Tensione nominale	150V	130V	300V	450V	300V	350V	300V	750V	300V	750V
Rated current	Nennstrom	Courant assigné	Corrente nominale	6A	13.5A	6A	13.5A	16A	17.5A	16A	17.5A	16A	17.5A
Wire size	Drahtbereich	Diamètre des fils	Tipi di cavo	1mm ²		1mm ²		1.5mm ²		1.5mm ²		1.5mm ²	
Wire range (AWG)	Geeignet	Gamme des fils	Idoneo	16-24		16-24		14-20		14-20		14-20	
Insulation withstand voltage	Isolierungsspannungsfestigkeit	Tension d'isolement	Tensione di tenuta d'isolamento	AC15000V/MIN		AC15000V/MIN		AC1000V/MIN		AC1000V/MIN		AC1000V/MIN	
Insulation resistance	Isolierungswiderstand	Résistance d'isolement	Resistenza d'isolamento	1000MΩ at 500V		1000MΩ at 500V		1000MΩ at 500V		1000MΩ at 500V		1000MΩ at 500V	
Torque (Nm)	Drehmoment	Couple	Coppia	0.2		0.2		0.4		0.4		0.4	
Temperature range	Temperaturbereich	Plage de température	Gamma di temperature	-40° + 105° C		-40° + 105° C		-40° + 105° C		-40° + 105° C		-40° + 105° C	
Wire Strip length	Drahtabisolierlänge	Longueur isolée du fil	Lunghezza spellaggio cavo	5-6mm		5-6mm		5-6mm		5-6mm		5-6mm	
Part no.	Artikelbez	Numéro d'identification	Part. No.	20.550M/2 (21.550M/2)		20.650M/2		20.501M/2		20.500M/2 (21.500M/2)		20.600M/2 (21.600M/2)	
Pole	Pol	Pôle	Polo	20.550M/24 (21.550M/24)		20.650M/24		20.501M/24		20.500M/24 (21.500M/24)		20.600M/24 (21.600M/24)	

	20.101M	20.100M	21.100M	20.200M	21.200M	20.105M	21.105M	20.205M	21.205M	20.110M	20.210M		
											Picture not available		
Pitch	Höhe	Pas	Passo	5.00mm		5.00mm (5.08mm)		10.00mm (10.16mm)		5.00mm (5.08mm)		10.00mm (10.16mm)	
Technical data	Technische Daten	Documentation technique	Dati tecnici	UL	IEC	UL	IEC	UL	IEC	UL	IEC	UL	IEC
Rated voltage	Nennspannung	Tension assignée	Tensione nominale	300V	250V	300V	250V	300V	750V	300V	750V	300V	380V
Rated current	Nennstrom	Courant assigné	Corrente nominale	16A	24A	16A	24A	16A	24A	16A	24A	16A	16A
Wire size	Drahtbereich	Diamètre des fils	Tipi di cavo	2.5mm ²		2.5mm ²		2.5mm ²		2.5mm ²		2.5mm ²	
Wire range (AWG)	Geeignet	Gamme des fils	Idoneo	12-22		12-22		12-22		12-22		12-22	
Insulation withstand voltage	Isolierungsspannungsfestigkeit	Tension d'isolement	Tensione di tenuta d'isolamento	AC1000V/MIN		AC1000V/MIN		AC1000V/MIN		AC1000V/MIN		AC1000V/MIN	
Insulation resistance	Isolierungswiderstand	Résistance d'isolement	Resistenza d'isolamento	1000MΩ at 500V		1000MΩ at 500V		1000MΩ at 500V		1000MΩ at 500V		1000MΩ at 500V	
Torque (Nm)	Drehmoment	Couple	Coppia	0.5		0.5		0.5		0.5		0.5	
Temperature range	Temperaturbereich	Plage de température	Gamma di temperature	-40° + 105° C		-40° + 105° C		-40° + 105° C		-40° + 105° C		-40° + 105° C	
Wire Strip length	Drahtabisolierlänge	Longueur isolée du fil	Lunghezza spellaggio cavo	6-7mm		6-7mm		6-7mm		6-7mm		6-7mm	
Part no.	Artikelbez	Numéro d'identification	Part. No.	20.101M/2		20.100M/2 (21.100M/2)		20.200M/2 (21.200M/2)		20.105M/2 (21.105M/2)		20.205M/2 (21.205M/2)	
Pole	Pol	Pôle	Polo	20.101M/24		20.100M/24 (21.100M/24)		20.200M/24 (21.200M/24)		20.105M/24 (21.105M/24)		20.205M/24 (21.205M/24)	

Standard PCB Terminal Blocks



	20.510M	20.514M	20.511M	21.511M	20.515M	21.515M	20.102M	20.103M	20.104M			
Pitch	Höhe	Pas	Passo	3.50mm	3.50mm	5.00mm (5.08mm)	5.00mm (5.08mm)	5.00mm	7.50mm	10.00mm		
Technical data	Technische Daten	Documentation technique	Dati tecnici	UL	IEC	UL	IEC	UL	IEC	UL	IEC	
Rated voltage	Nennspannung	Tension assignée	Tensione nominale	300V	130V	300V	250V	300V	450V	300V	450V	
Rated current	Nennstrom	Courant assigné	Corrente nominale	10A	10A	16A	12A	12A	32A	12A	32A	
Wire size	Drahtbereich	Diamètre de fils	Tipi di cavo	1.5mm ²	1.5mm ²	2.5mm ²	2.5mm ²	4mm ²	4mm ²	4mm ²	4mm ²	
Solid wire (AWG)	Massivdraht (AWG)	Fil rigide (AWG)	Cavo rigido (AWG)	24-16	24-16	24-14	24-14	18-12	18-12	18-12	18-12	
Stranded wire (AWG)	Normaldraht (AWG)	Fil standard (AWG)	Cavo standard (AWG)	24-18	24-18	24-14	24-14	18-12	18-12	18-12	18-12	
Rated surge voltage (UL/IEC(max))	Bemessungsstossspannung (max)	Surintention nominale (max)	Sovratensione nominale (max)	1.6/1.25/2kV	1.6/1.25/2kV	1.6/2/4kV	1.6/2/4kV	1.6/2.5/4kV	1.6/2.5/4kV	1.6/2.5/4kV	1.6/2.5/4kV	
Torque (Nm)	Drehmoment	Couple	Coppia	0.2	0.2	0.4	0.4	0.3	0.3	0.3	0.3	
Screw	Schraube	Plage de température	Vite	M2	M2	M2.5	M2.5	M3	M3	M3	M3	
Wire Strip length	Drahtabisolierlänge	Longueur isolée du fil	Lunghezza spellaggio cavo	5-6mm	5-6mm	5-6mm	5-6mm	6-7mm	6-7mm	6-7mm	6-7mm	
Part no.	Artikelbez	Numéro d'identification	Part. No.									
Pole	Pol	Pôle	Polo	20.510M/2 20.510M/24	20.514M/2 20.514M/24	20.511M/2 20.511M/24	(21.511M/2) (21.511M/24)	20.515M/2 20.515M/24	(21.515M/2) (21.515M/24)	20.102M/2SB 20.102M/24SB	20.103M/2 20.103M/12	20.104M/2 20.104M/12

	20.300M	20.400M	20.130M	20.130M/PS	20.131M-HT	20.230M	20.230M/PS			
Pitch	Höhe	Pas	Passo	5.00mm	5.00mm	5.00mm	10.00mm	10.00mm		
Technical data	Technische Daten	Documentation technique	Dati tecnici	UL	IEC	UL	IEC	UL	IEC	
Rated voltage	Nennspannung	Tension assignée	Tensione nominale	300V	250V	300V	250V	300V	750V	
Rated current	Nennstrom	Courant assigné	Corrente nominale	16A	24A	16A	24A	10A	17.5A	
Wire size	Drahtbereich	Diamètre des fils	Tipi di cavo	2.5mm ²	2.5mm ²	1.5mm ²	1.5mm ²	1.5mm ²	1.5mm ²	
Wire range (AWG)	Geeignet	Gamma des fils (AWG)	Idoneo	12-20	12-20	14-20	14-20	14-20	14-20	
Insulation withstand voltage	Isolierungsspannungsfestigkeit	Tension d'isolement	Tensione di tenuta d'isolamento	AC1500V/MIN	AC1500V/MIN	AC1500V/MIN	AC1500V/MIN	AC1500V/MIN	AC1500V/MIN	
Insulation resistance	Isolierungswiderstand	Resistance d'isolement	Resistenza d'isolamento	1000MΩ at 500V	1000MΩ at 500V	1000MΩ at 500V	1000MΩ at 500V	1000MΩ at 500V	1000MΩ at 500V	
Torque (Nm)	Drehmoment	Couple	Coppia	0.4	0.4	0.4	0.4	0.4	0.4	
Temperature range	Temperaturbereich	Plage de température	Gamma di temperature	-40° + 105° C	-40° + 105° C	-40° + 105° C	-40° + 105° C	-40° + 105° C	-40° + 105° C	
Wire Strip length	Drahtabisolierlänge	Longueur isolée du fil	Lunghezza spellaggio cavo	6-7mm	6-7mm	6-7mm	6-7mm	6-7mm	6-7mm	
Part no.	Artikelbez	Numéro d'identification	Part. No.							
Pole	Pol	Pôle	Polo	20.300M/2 20.300M/24	20.400M/2 20.400M/24	20.130M/2 20.130M/24	20.130M/PS2 20.130M/PS24	20.131M/PS2-HT 20.131M/PS24-HT	20.230M/2 20.230M/24	20.230M/PS12