



Construction
Polyamide 66



Non Metallic Systems TYPE AL (A) STRAIGHT

Description Simple Push Fit gland for
corrugated conduit systems
For knockout mounting

Material

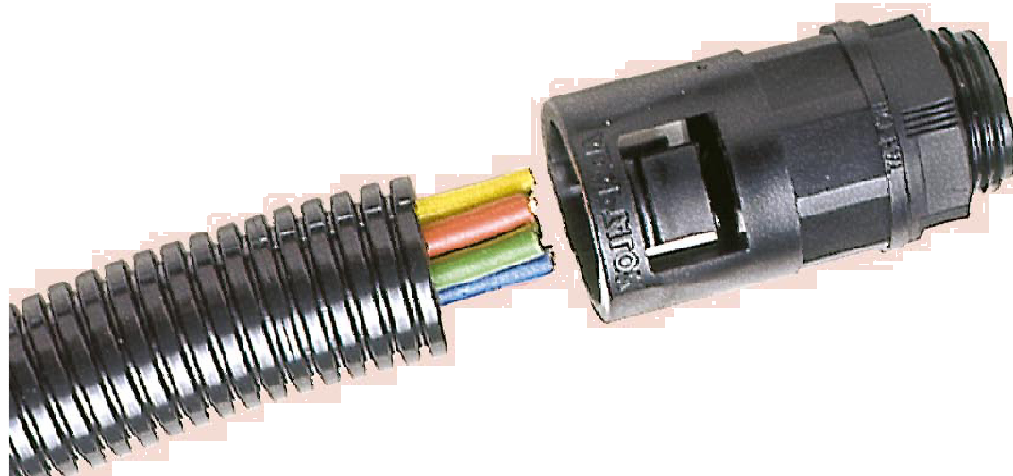
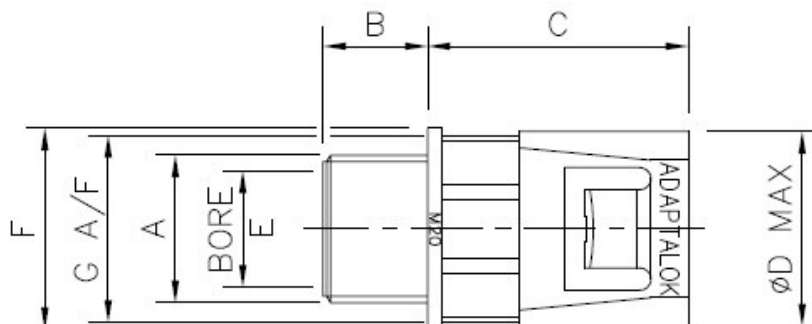
Polyamide 66
Black/Grey

**Compatible
Conduits**

PA
PI
CP
PR

**Additional Types
of Fitting in range**

Straight (A)
90° Elbow (C90)
45° Elbow (45)
One Piece Coupler (A)
3 Way
Straight Swivel to Flange
90° Swivel to Flange
45° Swivel to Flange
Swivel Coupler





Construction
Polyamide 66



Non Metallic Systems TYPE AL (A) STRAIGHT

Chemical Properties

Suitable



Limited Suitability



Astm No.1		Methanol	
Astm No.2		Methyl Bromide	Not Suitable
Astm No.3		MEK	
Acetic Acid (10%)		Nitric Acid (10%)	Not Suitable
Acetone		Nitric Acid (70%)	Not Suitable
Aluminium Chloride		Oxalic Acid	
Aniline		Ozone (Gas)	Not Suitable
Benzaldehyde		Paraffin oil	
Benzene		Petrol	
Carbon tetrachloride		Phenol	Not Suitable
Chlorine water	Not Suitable	Sea Water	
Chloroform	Not Suitable	Silver Nitrate	
Citric Acid		Skydrol	
Copper Sulphate		Sodium Chloride	
Cresol	Not Suitable	Sodium Hydroxide (10%)	
Diesel oil		Sodium Hydroxide (60%)	
Diethylamine		Sulphur Dioxide (Gas)	Not Suitable
Ethanol		Sulphuric Acid (10%)	Not Suitable
Ether		Sulphuric Acid (70%)	Not Suitable
Ethylamine		Toluene	
Ethylene Glycol		Transformer Oil	
Ethyl Ethanoate		1,1,1-Trichloroethane	
Freon 32		Trichloroethylene	
Hydrochloric Acid (10%)	Not Suitable	Turpentine	
Hydrochloric Acid (36%)	Not Suitable	Vegetable Oil	
Hydrogen Peroxide (35%)		Vinyl Acetate	
Hydrogen Peroxide (87%)	Not Suitable	Water	
Lactic Acid		White Spirit	
Lubricating oil		Zinc Chloride	Not Suitable

The information above is given as a guide only and is based on published technical data and experience. The chemical resistance of the above products is dependant on factors such as chemical exposure, concentration of the chemical and temperature. The above chemicals are valid for a temperature of 23°C. Use of the above table is at the users own discretion and risk. Those using it must satisfy themselves that their application presents no health and safety risks. The end user should assess compatibility with their application and contact Adaptaflex for further information.

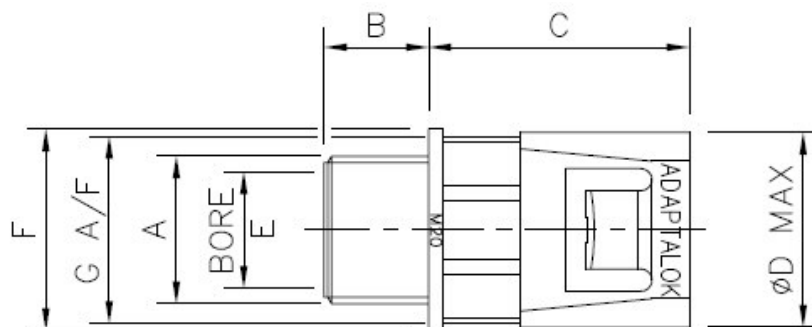


Construction
Polyamide 66



Non Metallic Systems TYPE AL (A) STRAIGHT

Dimension Charts for fittings STRAIGHT TYPE (Metric)



PART No.	THREAD A	NOMINAL DIMENSIONS (mm)						WEIGHT gms.
		B	C	D	E	F	G	
AL10/M12/A	M12x1.5	10.0	25.0	16.1	7.5	15.2	12.5	3
AL13/M16/A	M16x1.5	11.5	33.0	21.3	11.6	19.0	17.0	5
AL16/M16/A	M16x1.5	11.5	33.0	23.7	11.6	23.7	19.8	6
AL16/M20/A	M20x1.5	11.5	33.0	23.7	15.3	23.4	19.8	7
AL18/M20/A	M20x1.5	11.5	34.0	26.3	15.0	23.0	21.6	7
AL20/M20/A	M20x1.5	13.0	34.8	28.1	14.8	26.8	21.7	9
AL21/M20/A	M20x1.5	14.0	34.7	28.9	14.8	26.7	25.0	9
AL21/M25/A	M25x1.5	11.0	35.75	29.0	17.8	31.5	25.0	10
AL25/M25/A	M25x1.5	16.0	35.9	32.8	20.0	30.8	28.7	12
AL28/M25/A	M25x1.5	16.2	36.8	36.8	20.0	35.5	32.3	14
AL28/M32/A	M32x1.5	12.2	37.1	36.8	22.3	37.7	32.5	17
AL34/M32/A	M32x1.5	16.0	37.8	43.2	26.5	41.5	38.9	20
AL34/M40/A	M40x1.5	12.1	37.9	43.0	30.3	45.3	39.0	23
AL42/M40/A	M40x1.5	16.0	47.8	53.8	31.0	52.8	49.5	45
AL42/M50/A	M50x1.5	12.1	48.1	54.0	37.8	66.8	50.0	57
AL54/M50/A	M50x1.5	16.0	53.0	66.9	40.2	67.2	62.6	71
AL54/M63/A	M63x1.5	16.0	53.0	66.9	50.0	70.0	62.6	75

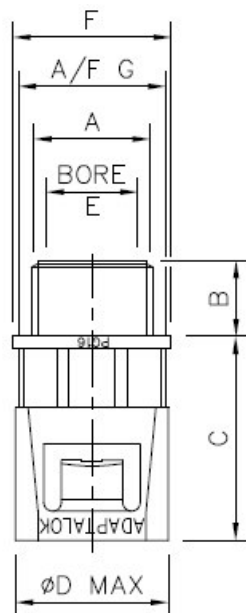


Construction
Polyamide 66



Non Metallic Systems
TYPE AL (A) STRAIGHT

Dimension Charts for fittings
STRAIGHT TYPE (PG)



PG THREADS

PART No.	THREAD A	NOMINAL DIMENSIONS (mm)						WEIGHT gms.
		B	C	D	E	F	G	
AL10/PG7/A	PG7	8.0	25.1	16.1	8.0	15.2	12.7	3
AL10/PG9/A	PG9	10.2	25.1	16.2	9.5	18.1	12.7	3
AL13/PG9/A	PG9	10.0	31.4	21.3	11.4	18.4	16.9	5
AL13/PG11/A	PG11	10.0	31.4	21.3	12.5	21.7	16.9	5
AL13/PG13/A	PG13,5	10.2	31.4	21.3	12.5	23.2	16.9	5
AL16/PG9/A	PG9	10.0	33.0	23.7	11.3	21.8	19.9	6
AL16/PG11/A	PG11	10.0	33.0	23.7	12.5	21.7	19.9	6
AL16/PG13/A	PG13,5	10.0	33.0	23.7	12.5	23.6	19.9	7
AL16/PG16/A	PG16	11.5	33.0	23.7	14.5	26.8	19.9	7
AL18/PG13/A	PG13,5	10.0	34.2	26.3	14.2	24.5	21.7	8
AL21/PG11/A	PG11	10.0	34.8	29.0	13.6	26.8	25.1	9
AL21/PG13/A	PG13,5	10.0	34.8	29.0	15.5	26.8	25.1	9
AL21/PG16/A	PG16	11.2	34.8	28.9	17.7	26.8	25.1	10
AL28/PG21/A	PG21	12.2	36.9	36.8	22.3	35.5	32.3	15
AL34/PG29/A	PG29	12.2	37.8	43.0	30.1	41.5	38.9	20
AL42/PG36/A	PG36	12.1	48.0	53.8	38.0	52.7	49.5	43
AL54/PG48/A	PG48	12.1	52.8	66.8	49.3	67.2	62.3	67

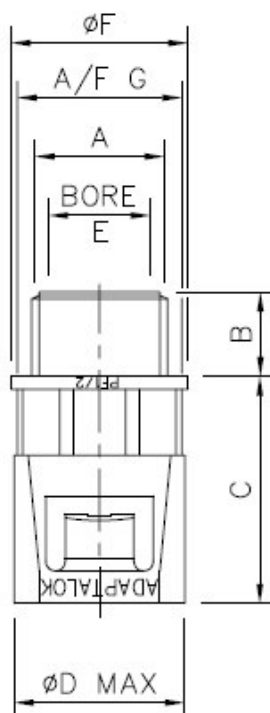


Construction
Polyamide 66



Non Metallic Systems TYPE AL (A) STRAIGHT

Dimension Charts for fittings STRAIGHT TYPE (PF)



PF THREADS

PART No.	THREAD A	NOMINAL DIMENSIONS (mm)						WEIGHT gms.
		B	C	D	E	F	G	
AL10/PF025/A	PF 1/4	11.5	25.2	16.1	8.8	17.7	12.6	3
AL13/PF038/A	PF 3/8	11.5	31.3	21.2	11.6	21.7	16.8	5
AL16/PF038/A	PF 3/8	11.5	33.0	23.7	11.6	21.7	19.7	7
AL16/PF050/A	PF 1/2	11.5	33.0	23.7	15.0	25.8	19.8	7
AL21/PF050/A	PF 1/2	14.0	34.8	29.0	15.0	26.7	25.0	10
AL28/PF075/A	PF 3/4	16.2	36.8	36.6	20.0	34.3	32.3	15
AL34/PF100/A	PF 1	16.0	37.8	43.0	26.7	41.5	38.9	20
AL42/PF125/A	PF 1 1/4	16.0	47.6	53.5	30.9	52.7	49.1	45
AL54/PF150/A	PF 1 1/2	16.0	53.0	66.9	40.7	67.5	62.6	68
AL54/PF200/A	PF 2	16.0	53.0	66.9	49.6	68.9	62.6	73

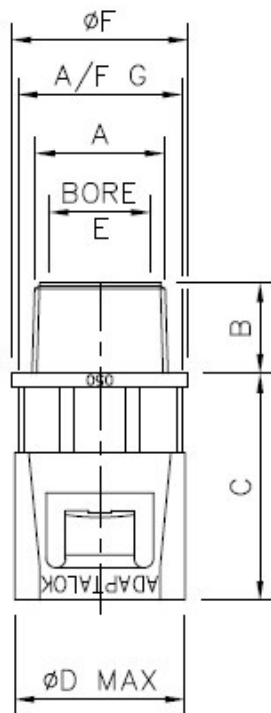


Construction
Polyamide 66



Non Metallic Systems
TYPE AL (A) STRAIGHT

Dimension Charts for fittings
STRAIGHT TYPE (NFP)



NPT THREADS

PART No.	THREAD A	NOMINAL DIMENSIONS (mm)						WEIGHT gms.
		B	C	D	E	F	G	
AL13/038/A	NPT $\frac{3}{8}$	11.5	31.4	21.3	11.6	18.8	17.0	5
AL16/038/A	NPT $\frac{3}{8}$	11.5	33.0	23.7	11.6	21.4	19.8	7
AL16/050/A	NPT $\frac{1}{2}$	11.5	33.0	23.7	15.3	26.6	19.8	7
AL21/050/A	NPT $\frac{1}{2}$	14.0	34.8	28.9	15.2	26.7	24.9	9
AL28/075/A	NPT $\frac{3}{4}$	16.2	37.0	36.8	20.1	34.4	32.4	15
AL34/100/A	NPT 1	16.0	37.8	43.2	26.8	41.6	38.9	20
AL42/125/A	NPT $1\frac{1}{4}$	16.0	47.8	53.8	30.8	52.7	49.5	46
AL54/150/A	NPT $1\frac{1}{2}$	16.0	53.0	66.8	41.0	66.7	62.6	70
AL54/200/A	NPT 2	16.0	53.0	66.8	49.6	68.9	62.6	75

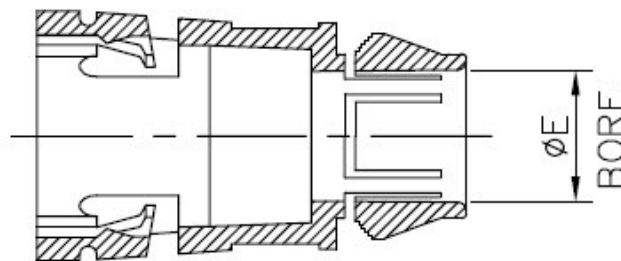
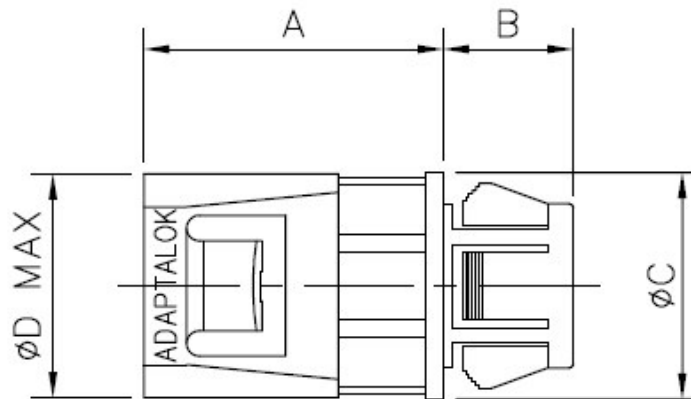


Construction
Polyamide 66

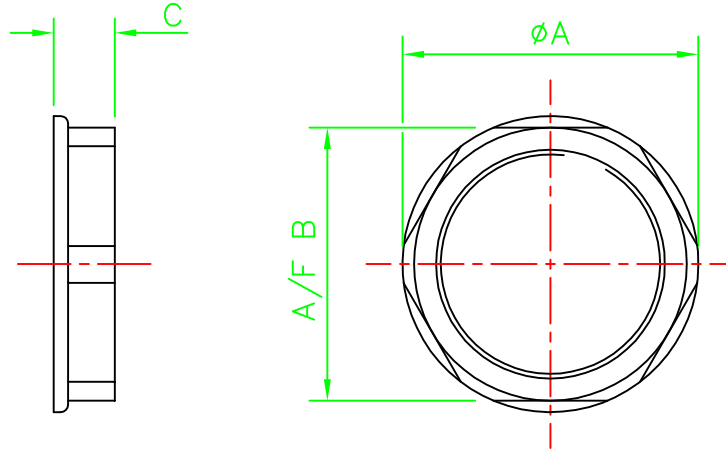


Non Metallic Systems
TYPE AL (A) STRAIGHT

Dimension Charts for fittings
STRAIGHT TYPE (Push In)



PART No.	NOMINAL DIMENSIONS (mm)					WEIGHT gms.
	A	B	C	D	E	
AL10/KM20/A	25.4	15.2	26.5	16.1	8.0	4
AL16/KM20/A	33.0	15.2	26.5	23.7	15.0	7
AL21/KM20/A	35.0	15.2	26.5	29.0	16.0	10



PART No.	THREAD SIZE	DIMENSIONS (mm)		
		A	B	C
LNPB/M16	M16	22.0	19.0	6.7
LNPB/M20	M20	27.0	23.0	8.0
LNPB/M25	M25	32.0	28.0	9.0
LNPB/M32	M32	42.0	36.5	9.0
LNPB/M40	M40	51.0	46.0	10.0
LNPB/M50	M50	65.0	60.0	10.0
LNPB/M63	M63	82.0	74.0	10.0

LOCK NUTS ARE LFH AND HALOGEN FREE



BIRMINGHAM ENGLAND

This drawing/document is a COPYRIGHT and the property ADAPTAFLEX LIMITED it must not be copied (in whole or part) used for manufacture or otherwise disclosed without prior written consent of the company. The Company's policy is one of continuous improvement and it therefore reserves the right to change specifications at any time without notice.

MATERIAL **NYLON 66 (PA66)**

FINISH **FINE SPARK**

COLOUR **BLACK**

DATE **5/11/01**

CHARTS 019

TITLE

**NYLON
LOCKNUTS**