

A range of Sockets for octal and 11 PIN base, miniature and sub-miniature plug-in Power Relays


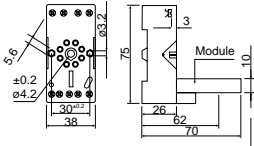
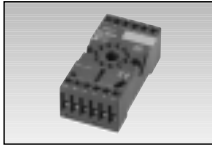
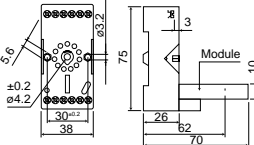

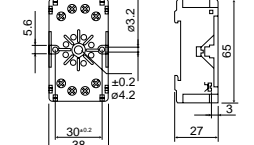
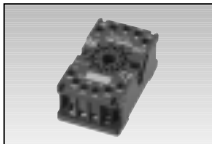
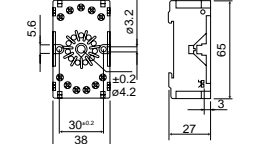
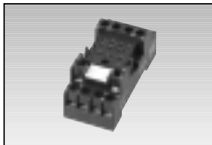
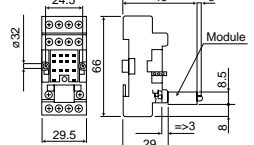
- Current ratings up to 12A
- Finger proof terminals
- Clamp plate or Box style terminals
- Plug-in modules available, Diode/LED/Varistor
- UL/CSA approvals



Options and ordering codes

Part Number	SRN8	SRN11	SRN8E	SRN11E	SRN144	SRN144N	SRN3	SRN5	
Number of terminals	9	12	8	11	14	14	5	8	
Terminal type	Box				Clamp		Box		
Rating	10A/400V				10A/400V	12A/300V	12A/300V		
Dielectric strength	>3Kv								
Temperature range	-40 to +85°C						-25 to +85°C		
Screw tightening torque	0.8Nm								
Cable size	rigid				2 x 2.5mm				
	flexible				2 x 2.5mm				
Protection	IP20								
Module facility	Yes	Yes	No	No	Yes	Yes	Yes	Yes	
Label facility	Yes	Yes	Yes	Yes	Yes	Option	Option	Option	

Dimensions and termination

	SRN8	
	SRN11	
	SRN8E	
	SRN11E	
	SRN144	

Dimensions and terminations

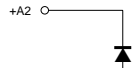
	SRN144E	
	SRN3	
	SRN5	

Diode and LED modules

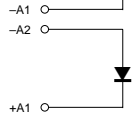
Plug-in Modules for use with:

Diode Module

6 – 230VDC

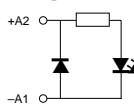


6 – 230VDC



Diode and LED module protected against polarity inversion

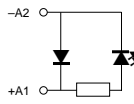
6/24VDC



110/240VDC

Diode and LED module protected against polarity inversion

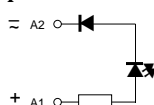
6/24VDC



110/240VDC

LED module without polarity protection

6/24V AC/DC



110/230V AC/DC

SRN8/11	SRN144N/SRN3/5		SRN144
RM11		RM12	RM1
RM21		RM22	RM2
RM31		RM32	RM3
RM31C		RM32C	RM3C
RM41		RM42	RM4
RM41C		RM42C	RM4C
RM61		RM62	RM6
RM91		RM92	RM9

Accessories

Label for use with SRN3/SRN5

TR

Relay ejector clip for SRN3/SRN5 and relays 15-16.5mm high

MS16