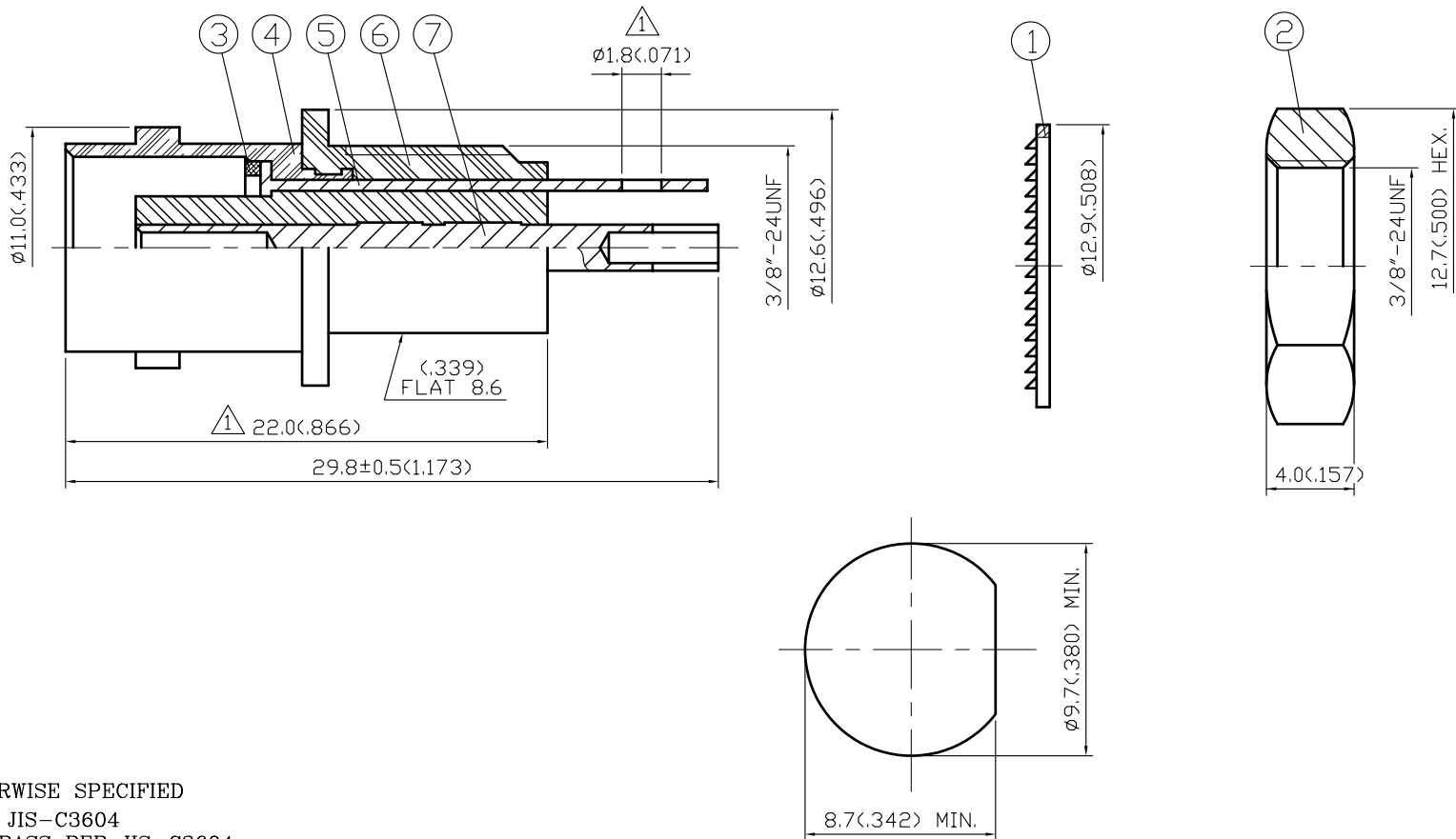


NO	DESCRIPTION	DATE
①	<math>\langle \phi 2 \rangle \rightarrow \phi 1.8, 22 \pm 0.25 \rightarrow 22.0</math>	02.20.97
②	BACKGROUND FORMAT UPDATED	11.12.02
③	MODIFICATION NOTES	12.23.02



- ③ NOTES: UNLESS OTHERWISE SPECIFIED
1. BODIES: BRASS PER JIS-C3604
  2. CENTER CONTACT: BRASS PER JIS-C3604
  3. PART TO BE CLEAN AND FREE OF BURRS

MOUNTING HOLE

**Farnell # 583522**

NO	DESCRIPTION	MATERIAL	Q'TY	FINISH
7	CENTER CONTACT	BRASS	1	GOLD
6	BODY I	ABS	1	NONE
5	WASHER	BRASS	1	NICKEL 100 $\mu$ " MIN.
4	BODY II	BRASS	1	NICKEL 100 $\mu$ " MIN.
3	WASHER	BRASS	1	NICKEL 100 $\mu$ " MIN.
2	NUT	BRASS	1	NICKEL 100 $\mu$ " MIN.
1	WASHER	IRON	1	NICKEL 100 $\mu$ " MIN.

製圖	DRAWN	TOLERANCE	品名	13-28 <math>\langle 50\Omega \rangle</math>	DATE	版次	REV.
	梁齡允						
檢圖	CHECK	.XX	單位	DWG.NO.	SCALE	佳楠精密電子股份有限公司	
	沈淑美						
認定	APPROVAL	.XXX	比例	CHIN NAN PRECISION ELECTRONICS CO.,LTD.			
余賢德	ANGLE	$\pm 5^\circ$	4:1				