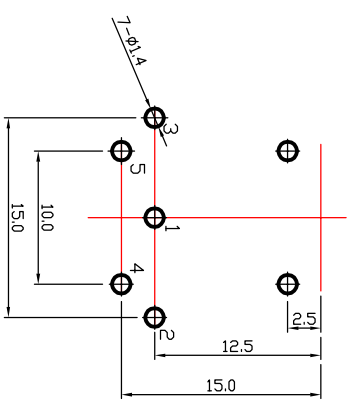
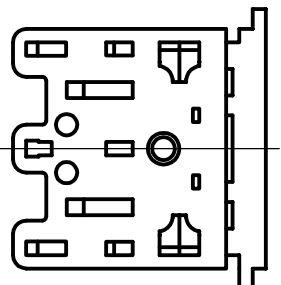


- SPECIFICATIONS**
- CURRENT RATING :AC:100V 1A
DC: 12V 2A
 - CONTACT RESISTANCE : 100M Ω MAX
(AFTER 1,000 CYCLES INSERTION/EXTRACTION)
 - DIELECTRIC WITHSTANDING VOLTAGE: 500V AC FOR 1 MINUTE
 - INSULATION RESISTANCE: 100M Ω MIN AT 500V DC
APPLIED FOR 1 MINUTE
 - INSERTION FORCE: 3KG MAX
 - EXTRACTION FORCE: 2.0~2.5KG



4	Terminal	0.7T Brass	7	Silver Plating
3	Earth Terminal	0.2T Phosphor Bronze	1	Silver Plating
2	Cover	PBT+30%G	1	Black Color
1	Housing	PBT+30%G	1	Black Color
NO	DESIGNATION	MATERIAL	Q'TY	Finish
REV	PART NO. & SAMPLE NO.	DATE	BY	
A	JR 2711-5P			
B				

TOLERANCE	0 - 10 10 - 99 100 - 999 1000 - 9999 10000 - 99999	±0.05 ±0.5 ±10.0 ±100.00 ±1000.00
-----------	--	---

SHEET	OF
-------	----

SIGNATURES	DATE	
DRAFT: ZHOU XIN GUO	10.02.26	
CHECKED:		
APPROVAL:		
SCALE	UNIT	REV
1:1	mm	∅

今入企业股份有限公司
JIN RUH CO., LTD

TITLE	Din Jack(5P)
CUSTOMER	