



# SAW filters for infrastructure systems

## Series/Type: **B9031**

The following products presented in this data sheet are being withdrawn.

Ordering Code	Substitute Product	Date of Withdrawal	Deadline Last Orders	Last Shipments
B39202B9031E910	B39202B9414M410	2010-06-25	2011-06-30	2011-09-30

For further information please contact your nearest EPCOS sales office, which will also support you in selecting a suitable substitute. The addresses of our worldwide sales network are presented at [www.epcos.com/sales](http://www.epcos.com/sales).



**SAW Components**

**B9031**

**Low-Loss Filter for Mobile Communication**

**1950,0 MHz**

**Data Sheet**



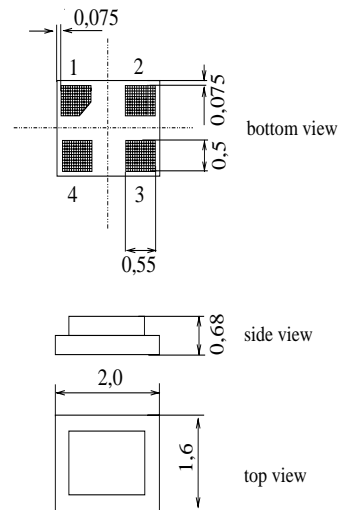
Chip sized SAW package DCS4G

**Features**

- Low-loss RF filter for W-CDMA mobile telephone system, transmit path
- High stopband attenuation
- Usable passband 60 MHz
- Unbalanced/unbalanced operation
- Package size: 2 mm x 1.6 mm (4 pin, diagonal pinning)

**Terminals**

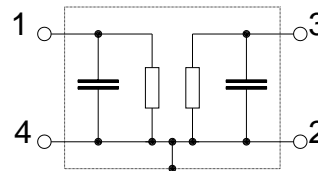
- Ni, gold-plated



Dimensions in mm, approx weight 0,007g

**Pin configuration**

- 1 Input
- 3 Output
- 2,4 Ground



Type	Ordering code	Marking and Package according to	Packing according to
B9031	B39202-B9031-E910	C61157-A7-A105	F61074-V8152-Z000

Electrostatic Sensitive Device (ESD)

**Maximum ratings**

Operable temperature range	$T$	- 40/+ 85	°C	Machine Model, 10 pulses source impedance 50 $\Omega$
Storage temperature range	$T_{stg}$	- 40/+ 85	°C	
DC voltage	$V_{DC}$	5	V	
ESD voltage	$V_{ESD}$	50*	V	
Input power	$P_S$	10	dBm	

\* - acc. to JESD22-A115A (Machine Model), 10 negative & 10 positive pulses



Data Sheet



Characteristics

Operating temperature range:  $T = +25\text{ °C}$   
 Terminating source impedance:  $Z_S = 50\ \Omega$   
 Terminating load impedance:  $Z_L = 50\ \Omega$

		min.	typ.	max.	
<b>Center frequency</b>	$f_C$	—	1950,0	—	MHz
<b>Maximum insertion attenuation</b>	$\alpha_{max}$				
	1920,0 ... 1980,0 MHz	—	1,8	2,2	dB
<b>Ripple</b>	p-p				
	1920,0 ... 1980,0 MHz	—	0,8	1,1	dB
<b>Input VSWR</b>					
	1920,0 ... 1980,0 MHz	—	1,7	2,1	
<b>Output VSWR</b>					
	1920,0 ... 1980,0 MHz	—	1,7	2,1	
<b>Attenuation</b>	$\alpha$				
	0,0 ... 1670,0 MHz	26	31	—	dB
	1670,0 ... 1720,0 MHz	29	34	—	dB
	1720,0 ... 1750,0 MHz	30	36	—	dB
	1750,0 ... 1880,0 MHz	31	35	—	dB
	2025,0 ... 2050,0 MHz	35	46	—	dB
	2110,0 ... 2170,0 MHz	35	39	—	dB
	2300,0 ... 2490,0 MHz	34	38	—	dB
	2490,0 ... 2740,0 MHz	35	40	—	dB
	2740,0 ... 3960,0 MHz	30	36	—	dB
	3960,0 ... 6000,0 MHz	20	28	—	dB



Data Sheet



Characteristics

Operating temperature range:  $T = -20$  to  $+85$  °C  
 Terminating source impedance:  $Z_S = 50 \Omega$   
 Terminating load impedance:  $Z_L = 50 \Omega$

		min.	typ.	max.	
<b>Center frequency</b>	$f_C$	—	1950,0	—	MHz
<b>Maximum insertion attenuation</b>	$\alpha_{max}$				
	1920,0 ... 1980,0 MHz	—	1,8	2,5	dB
<b>Ripple</b>	p-p				
	1920,0 ... 1980,0 MHz	—	0,8	1,4	dB
<b>Input VSWR</b>					
	1920,0 ... 1980,0 MHz	—	1,7	2,2	
<b>Output VSWR</b>					
	1920,0 ... 1980,0 MHz	—	1,7	2,2	
<b>Attenuation</b>	$\alpha$				
	0,0 ... 1670,0 MHz	26	31	—	dB
	1670,0 ... 1720,0 MHz	29	34	—	dB
	1720,0 ... 1750,0 MHz	30	36	—	dB
	1750,0 ... 1880,0 MHz	31	35	—	dB
	2025,0 ... 2050,0 MHz	35	46	—	dB
	2110,0 ... 2170,0 MHz	35	39	—	dB
	2300,0 ... 2490,0 MHz	34	38	—	dB
	2490,0 ... 2740,0 MHz	35	40	—	dB
	2740,0 ... 3960,0 MHz	30	36	—	dB
	3960,0 ... 6000,0 MHz	20	28	—	dB



Data Sheet



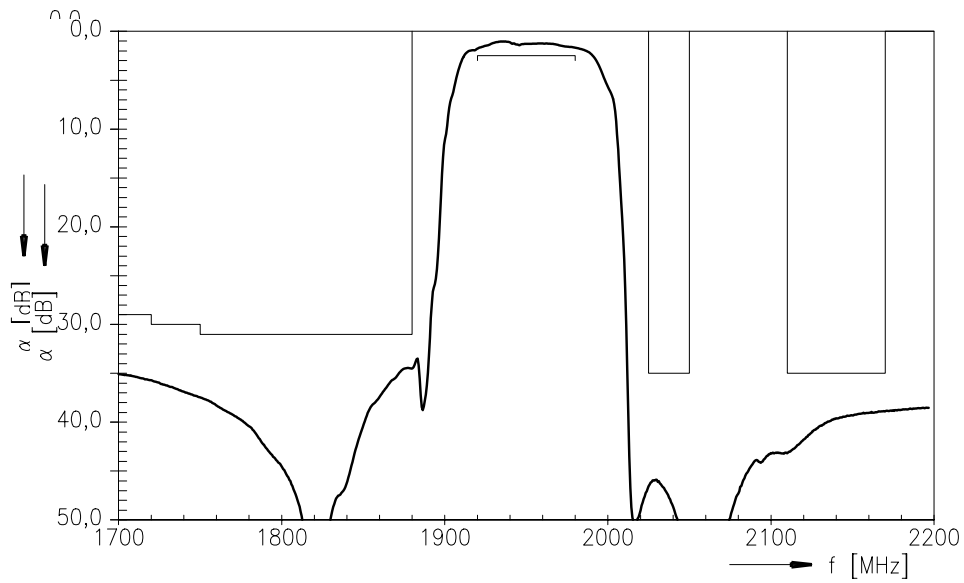
Characteristics

Operating temperature range:  $T = -30$  to  $+85$  °C  
 Terminating source impedance:  $Z_S = 50 \Omega$   
 Terminating load impedance:  $Z_L = 50 \Omega$

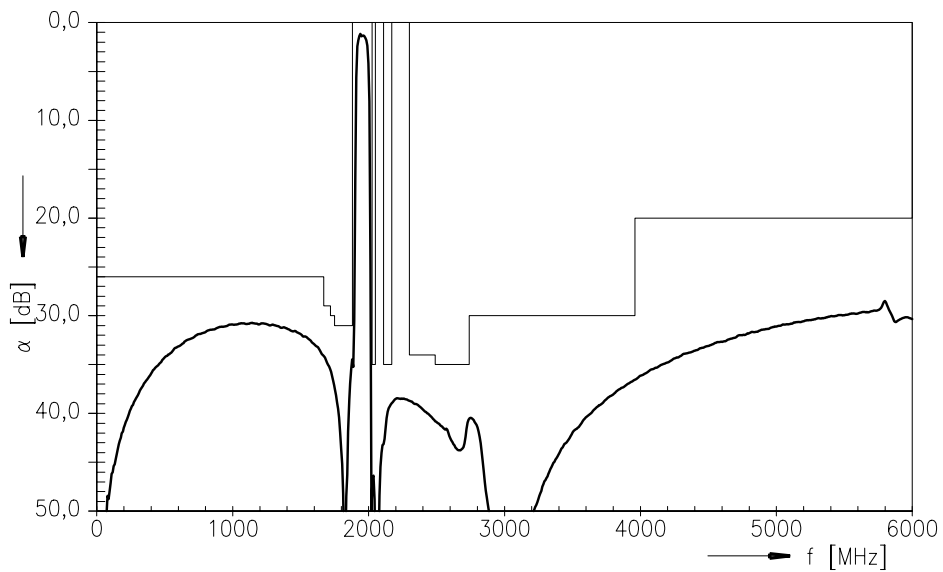
		min.	typ.	max.	
<b>Center frequency</b>	$f_C$	—	1950,0	—	MHz
<b>Maximum insertion attenuation</b>	$\alpha_{max}$				
	1920,0 ... 1980,0 MHz	—	1,8	2,7	dB
<b>Ripple</b>	p-p				
	1920,0 ... 1980,0 MHz	—	0,8	1,6	dB
<b>Input VSWR</b>					
	1920,0 ... 1980,0 MHz	—	1,7	2,2	
<b>Output VSWR</b>					
	1920,0 ... 1980,0 MHz	—	1,7	2,2	
<b>Attenuation</b>	$\alpha$				
	0,0 ... 1670,0 MHz	26	31	—	dB
	1670,0 ... 1720,0 MHz	29	34	—	dB
	1720,0 ... 1750,0 MHz	30	36	—	dB
	1750,0 ... 1880,0 MHz	31	35	—	dB
	2025,0 ... 2050,0 MHz	35	46	—	dB
	2110,0 ... 2170,0 MHz	35	39	—	dB
	2300,0 ... 2490,0 MHz	34	38	—	dB
	2490,0 ... 2740,0 MHz	35	40	—	dB
	2740,0 ... 3960,0 MHz	30	36	—	dB
	3960,0 ... 6000,0 MHz	20	28	—	dB



Transfer function (measured at room temperature):



Transfer function (wideband, measured at room temperature):





**SAW Components**

**B9031**

**Low-Loss Filter for Mobile Communication**

**1950,0 MHz**

Data Sheet



**Published by EPCOS AG**

**SAW MC WT, P.O. Box 80 17 09, 81617 Munich, GERMANY**

**TEL +49 89 636 09, FAX +49 89 636 2 26 89**

© EPCOS AG 2005. Reproduction, publication and dissemination of this brochure and the information contained therein without EPCOS' prior express consent is prohibited.

Purchase orders are subject to the General Conditions for the Supply of Products and Services of the Electrical and Electronics Industry recommended by the ZVEI (German Electrical and Electronic Manufacturers' Association), unless otherwise agreed.

This brochure replaces the previous edition.

For questions on technology, prices and delivery please contact the Sales Offices of EPCOS AG or the international Representatives.

Due to technical requirements components may contain dangerous substances. For information on the type in question please also contact one of our Sales Offices.