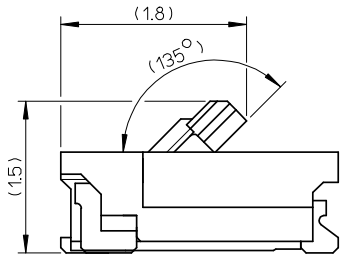
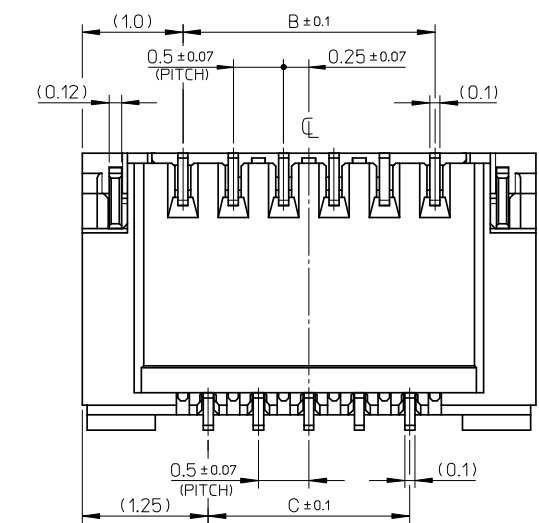
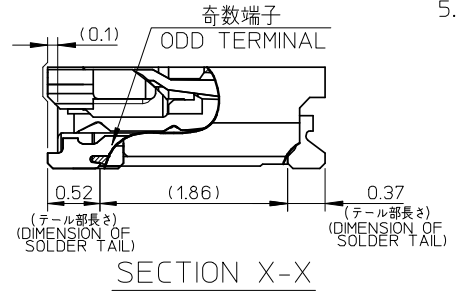
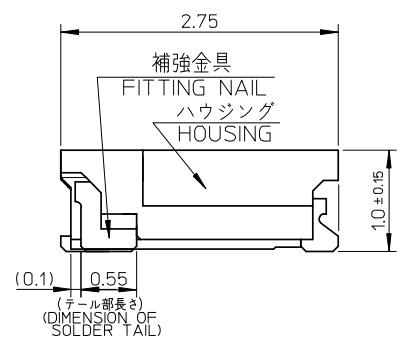
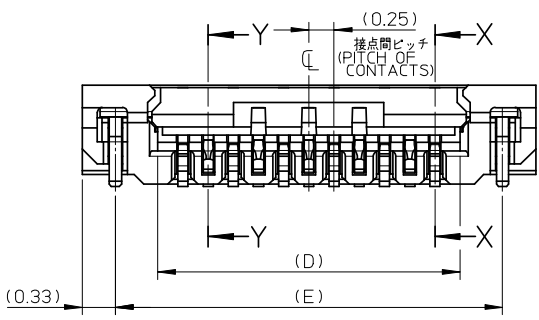


注記 NOTES

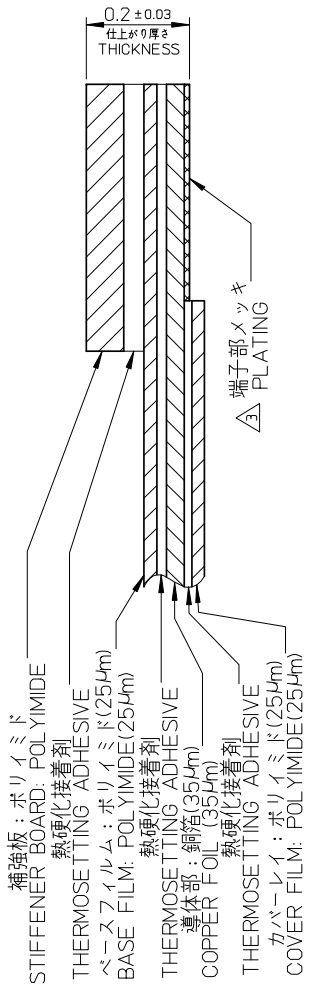
1. 使用材料 MATERIALS
 - ハウジング : 耐熱性樹脂(UL94V-0、ベージュ)
 - アクチュエータ : 耐熱性樹脂(UL94V-0、黒色)
 - 奇数端子 : 銅合金、ニッケル下地、金メッキ
 - 偶数端子 : 銅合金、ニッケル下地、金メッキ
 - 補強金具 : 銅合金、ニッケル下地、スズメッキ
 - HOUSING : G.F. HEAT RESISTANCE PLASTIC (BEIGE)
 - ACTUATOR : G.F. HEAT RESISTANCE PLASTIC (BLACK)
 - ODD TERMINAL : COPPER ALLOY, Gold OVER Nickel PLATING
 - EVEN TERMINAL : COPPER ALLOY, Gold OVER Nickel PLATING
 - FITTING NAIL : COPPER ALLOY, Tin OVER Nickel PLATING
- △ 端子、補強金具のコプラナリティーは 0.1 以下とする
COPLANARITY OF SOLDER TAILS AND FITTING NAILS : 0.1MAX.
3. 一般公差 : ±0.3
GENERAL TOLERANCES: ±0.3
△ アクチュエータの図示箇所にゲート逃げの凹みがあります
THERE ARE DENT SHAPES AT ACTUATOR FOR MOLDING GATE
5. ELV 及び RoHS 適合品
ELV AND RoHS COMPLIANT



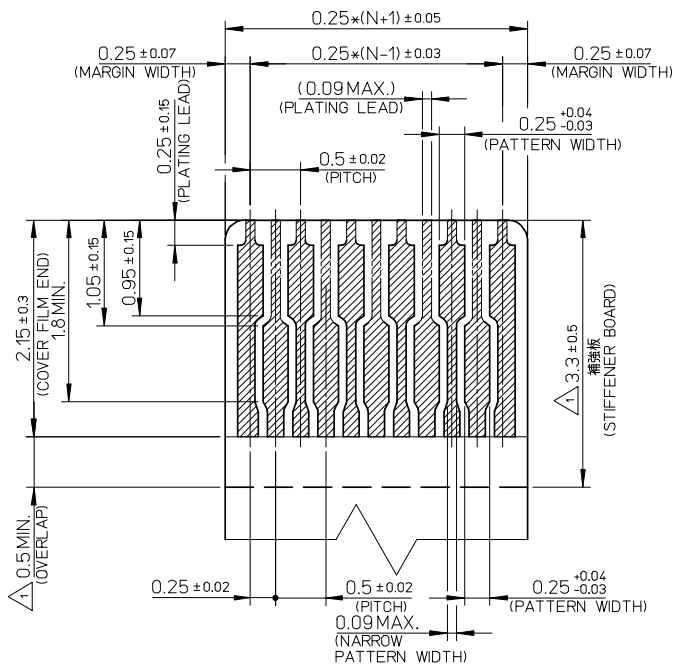
アクチュエータ開放位置
ACTUATOR OPENING POSITION

13.84	13	12	12.5	14.5	502078-5108	51
10.84	10	9	9.5	11.5	502078-3908	39
7.34	6.5	5.5	6	8	502078-2508	25
6.34	5.5	4.5	5	7	502078-2108	21
5.34	4.5	3.5	4	6	502078-1708	17
E	D	C	B	A	MATERIAL NO.	CKT.=N
502078-**08					MODEL NO.	

REVISED EC NO: J2008-3274 DRAWN: KTAKETOMI 2008/03/14 CHKD: TKANEKO 2008/03/14 APPR: TKANEKO 2008/03/14	GENERAL TOLERANCES (UNLESS SPECIFIED)		DIMENSION STYLE MM ONLY		SCALE 20:1	DESIGN UNITS METRIC	THIRD ANGLE PROJECTION
	10 UNDER	± ---	DRAWN BY KTAKETOMI	DATE 2006/11/09	TITLE 0.25 PITCH FPC CONN E/O HGT=1.0 BTM CONTACT TYPE		
	10 OVER 30 UNDER	± ---	CHECKED BY TKANEKO	DATE 2006/11/09	MOLEX INCORPORATED		
	30 OVER	± ---	APPROVED BY AHORINO	DATE 2006/11/09	DOCUMENT NO. SD-502078-001		
ANGULAR	±1 °	MATERIAL NO.	SEE CHART		SHEET NO. 1 OF 2		
DRAFT WHERE APPLICABLE MUST REMAIN WITHIN DIMENSIONS		THIS DRAWING CONTAINS INFORMATION THAT IS PROPRIETARY TO MOLEX INCORPORATED AND SHOULD NOT BE USED WITHOUT WRITTEN PERMISSION					



FPC 構成材料例
EXAMPLE OF FPC COMPOSITION MATERIAL

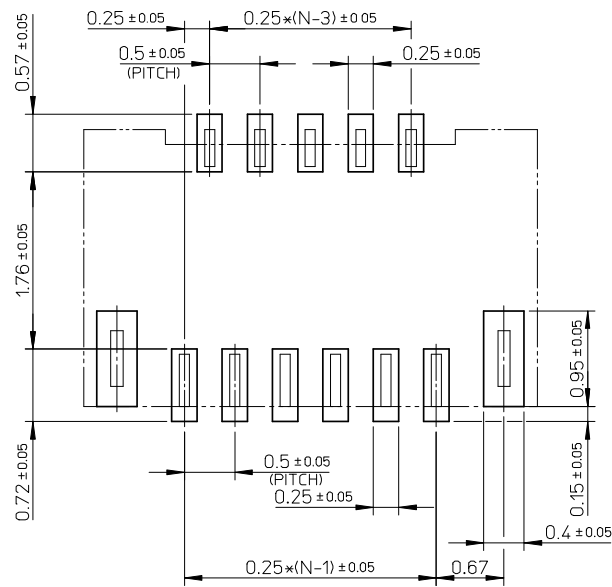


適合するFPC 推奨寸法
APPLICABLE FPC
RECOMMENDED DIMENSION

(端子部仕上がり厚さ: 0.2 ± 0.03)
(THICKNESS: 0.2 ± 0.03)

注記 NOTES

- 補強板長さが図面通り確保できない場合は、カバーレイと補強板のオーバーラップ寸法を 0.5mm 以上としてください
WHEN STIFFENER BOARD DIMENSION CAN NOT BE SECURE AS DRAWING, PLEASE GIVE THE OVERLAP SIZE OF COVER FILM AND STIFFENER BOARD AS 0.5mm MINIMUM
- 2 推奨ペースト厚 : 100μm
推奨マスク開口率 : 80%
RECOMMEND SCREEN THICKNESS : 100μm
RECOMMEND SCREEN OPEN RATIO : 80%



FPC挿入側
FPC INSERSION SIDE
参考基板レイアウト
RECOMMENDED PCB
PATTERN DIMENSIONS (REF.)

4 FPCについて (ABOUT FPC)

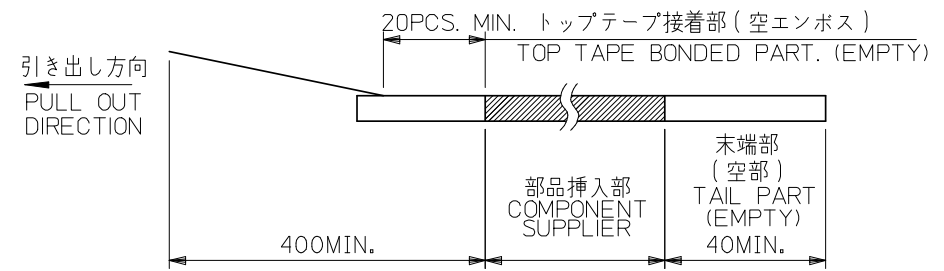
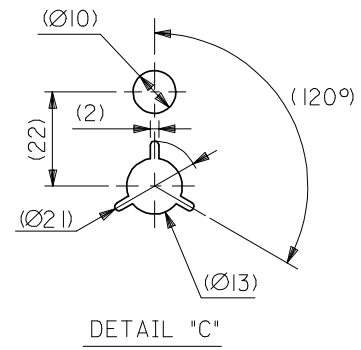
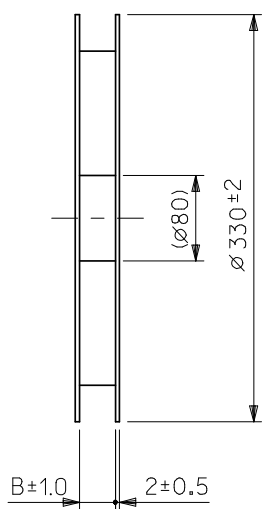
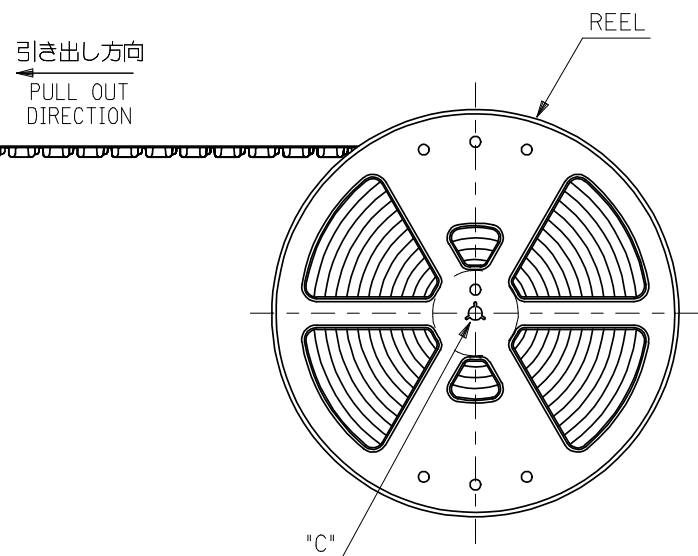
抜き方向は、導体側から補強板側を推奨します
補強板材質は、ポリイミドを推奨します
接着剤は熱硬化接着剤を推奨します
なお、接着剤の接点部への付着は導通不良の原因となりますので染み出しがないよう、お願いします
RECOMMENDED PUNCHER DIRECTION:
FROM CONDUCTOR SIDE TO STIFFENER BOARD SIDE
RECOMMENDED MATERIAL:
STIFFENER BOARD: POLYIMIDE
BONDING AGENT: THERMOSETTING AGENT
PLEASE PUT APPROPRIATE AMOUNT OF ADHESIVE ON THE CONTACT AREA BECAUSE THE EXTRA ADHESIVE MAY CAUSE THE DEFECT IN ELECTRICAL CONTINUITY

- FPCパターンのメッキ仕様は
金メッキ : 0.1μm以上
下地ニッケルメッキ : 2~6μm
FPC PATTERN PLATING
GOLD PLATING : 0.1μm MINIMUM
NICKEL UNDER PLATING : 2~6μm

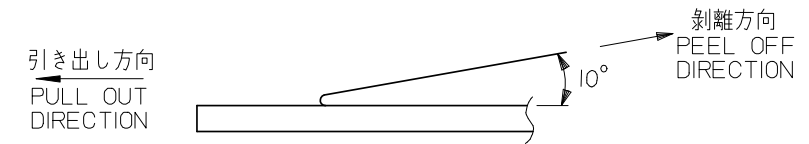
REVISED EC NO: J2008-3274 DRAWN: KTAKETOMI 2008/03/14 CHKD: TKANEKO 2008/03/14 APPR: TKANEKO 2008/03/14	GENERAL TOLERANCES (UNLESS SPECIFIED)		DIMENSION STYLE MM ONLY	SCALE 20:1	DESIGN UNITS METRIC	THIRD ANGLE PROJECTION
	10 UNDER	± ---	DRAWN BY KTAKETOMI	DATE 2006/11/09	TITLE 0.25 PITCH FPC CONN E/O HGT=1.0 BTM CONTACT TYPE	
	10 OVER 30 UNDER	± ---	CHECKED BY TKANEKO	DATE 2006/11/09	MOLEX INCORPORATED	
	30 OVER	± ---	APPROVED BY AHORINO	DATE 2006/11/09		
ANGULAR	±1 °	MATERIAL NO. SEE SHEET 1 OF 2	DOCUMENT NO. SD-502078-001	SHEET NO. 2 OF 2		
DRAFT WHERE APPLICABLE MUST REMAIN WITHIN DIMENSIONS		SIZE A3	THIS DRAWING CONTAINS INFORMATION THAT IS PROPRIETARY TO MOLEX INCORPORATED AND SHOULD NOT BE USED WITHOUT WRITTEN PERMISSION			

注記 NOTES

1. 製品詳細寸法については図面 SD-502078-001 を参照下さい。
RE DETAILED DIMENSION, SEE SD-502078-001
2. 梱包数量 : 3000 個/リール
NUMBER OF CONNECTORS : 3000 PCS/REEL
3. リードテープ長さ LEAD TAPE LENGTH



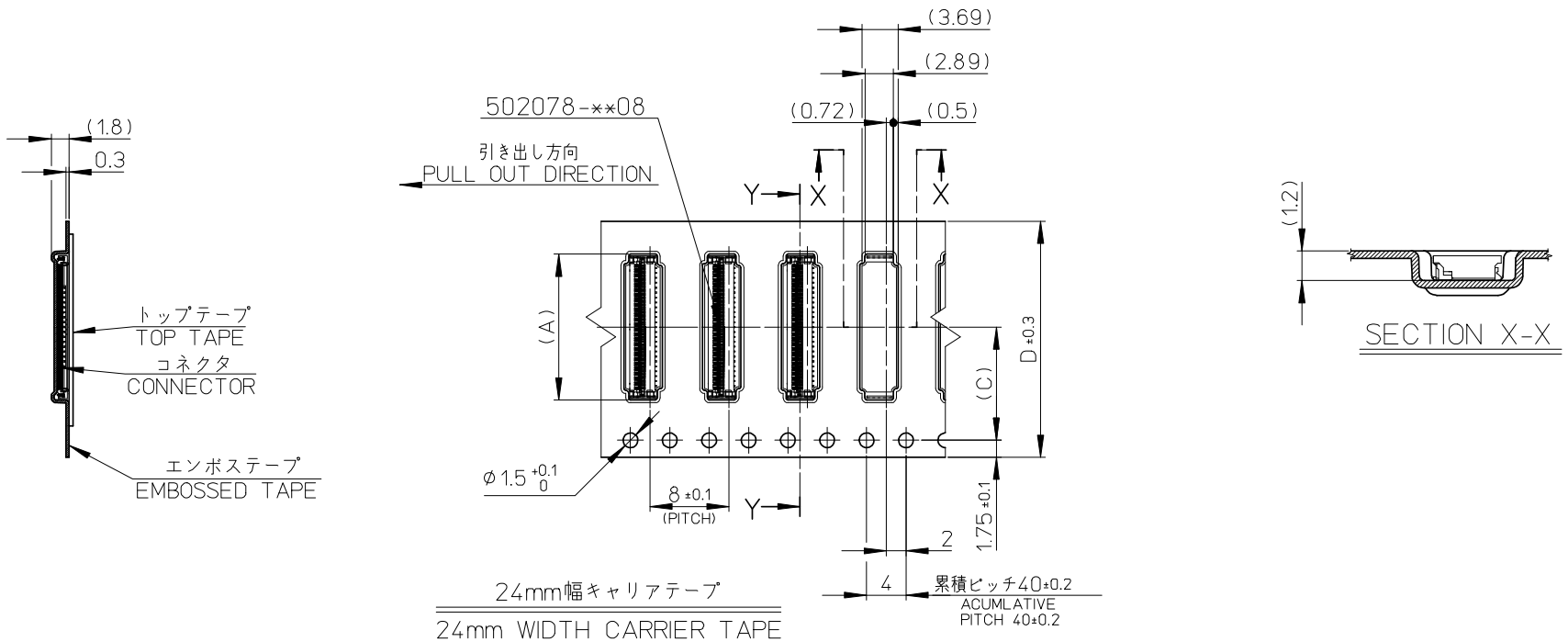
4. トップテープの剝離強度 : 0.1N~1.3N (10.2gf~132gf)
(剝離方向は下図参照)
尚、本規格値は出荷時に適用。(但し、輸送時に剝離が発生しないこと。)
PEELING OFF FORCE OF TOP TAPE : 0.1N~0.7N(10.2gf~71.4gf)
(PEELING DIRECTION AS SHOWN IN FOLLOWING FIG.)
THIS REQUIREMENT SHOULD BE APPLIED AT SHIPMENT.
PEEL OFF SHOULD NOT BE ALLOWED, DURING TRANSPORTION.



5. 材料 MATERIAL
キャリアテープ (CARRIER TAPE) : ポリスチレン (POLYSTYRENE)
トップテープ (TOP TAPE) : PET, PE, PEF
リール (REEL) : ポリスチレン (PS) <リサイクル材を含む>
POLYSTYRENE (PS) <RECYCLE MATERIAL CONTAINED>

MODEL NO. 502078-**00

REVISED EC NO: J2008-4066 DRAWN: TAKETOMI 2008/07/01 CHK'D: TKANEKO 2008/07/01 APPR: TKANEKO 2008/07/02	DESCRIPTION	GENERAL TOLERANCES (UNLESS SPECIFIED)		DIMENSION STYLE MM ONLY		SCALE ---	DESIGN UNITS METRIC	THIRD ANGLE PROJECTION			
		10 UNDER	±0.2	DRAWN BY KTAKETOMI	DATE 2006/02/16	TITLE 0.25MM FPC CONN E/O HSG ASSY EMBOSSED TAPE PACKAGE					
		10 OVER 30 UNDER	±0.25	CHECKED BY TKANEKO	DATE 2006/02/16	MOLEX INCORPORATED					
		30 OVER	±0.3	APPROVED BY AHORINO	DATE 2006/02/16	MATERIAL NO. SEE CHART	DOCUMENT NO. SD-502078-002	SHEET NO. 1 OF 2			
		ANGULAR	±3 °	THIS DRAWING CONTAINS INFORMATION THAT IS PROPRIETARY TO MOLEX INCORPORATED AND SHOULD NOT BE USED WITHOUT WRITTEN PERMISSION							
		DRAFT WHERE APPLICABLE MUST REMAIN WITHIN DIMENSIONS									



24	11.5	25.4	14.8	502078-5100	51
			11.8	502078-3900	39
			8.3	502078-2500	25
			7.3	502078-2100	21
16	7.5	17.4	6.3	502078-1700	17
D キャリアテープ幅 CARRIER TAPE WIDTH	C	B	(A)	製品番号 MATERIAL NO.	極数 CKT.
MODEL NO.			502078-***00		

REVISED EC NO: J2008-4066 DRAWN: TAKETOMI 2008/07/01 CHK'D: TKANEKO 2008/07/01 APPR: TKANEKO 2008/07/02	DESCRIPTION	GENERAL TOLERANCES (UNLESS SPECIFIED)		DIMENSION STYLE MM ONLY		SCALE ---	DESIGN UNITS METRIC	THIRD ANGLE PROJECTION		
		10 UNDER	±0.2	DRAWN BY KTAKETOMI	DATE 2006/02/16	TITLE 0.25MM FPC CONN E/O HSG ASSY EMBOSSED TAPE PACKAGE				
		10 OVER 30 UNDER	±0.25	CHECKED BY TKANEKO	DATE 2006/02/16	APPROVED BY AHORINO 2006/02/16				
		30 OVER	±0.3	MATERIAL NO. SEE CHART		DOCUMENT NO. SD-502078-002				
		ANGULAR ±3 °		DRAFT WHERE APPLICABLE MUST REMAIN WITHIN DIMENSIONS		SIZE A3		THIS DRAWING CONTAINS INFORMATION THAT IS PROPRIETARY TO MOLEX INCORPORATED AND SHOULD NOT BE USED WITHOUT WRITTEN PERMISSION		
								SHEET NO. 2 OF 2		