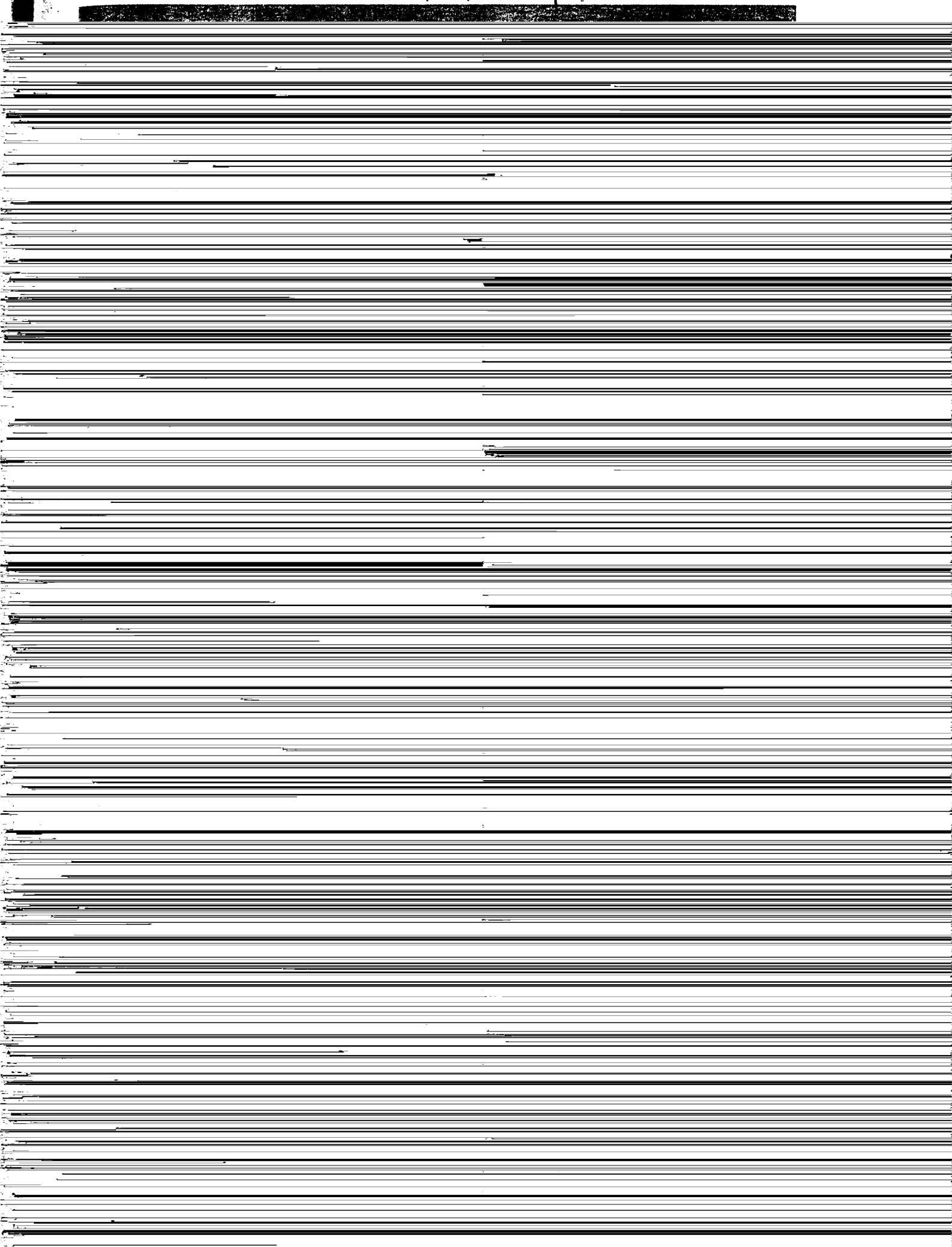


SECRET

Albany
Chroma
Grosvenor
Savoy
Metalclad

107-721
107719



Standards and approvals

All 13 Amp Sockets comply with BS 1363: Part 2, 1995

Round Pin Sockets comply with BS 546: 1950

Description

All sockets are easy to install. The range of finish, from the ubiquitous classic white of Logic, to the polished chrome of chroma makes these products suitable for any domestic, commercial, retail or leisure environments.

Any of these products can be quickly installed as replacements for existing sockets or in a new installation.

Non standard sockets

Non - standard clean earth sockets are for use on installations where restricted access is required and will only accept MK List No 647, 13A non-standard plug with 'T' shaped earth pin. The sockets have two independent earth terminals so they can also be used for 'clean earth' installations.

Box mounting depths

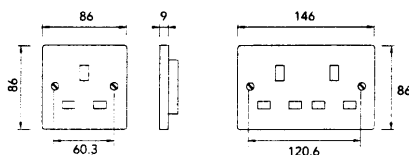
Logic 13A: 25mm (use 35mm where greater cabling space is required)

All other sockets: 35mm

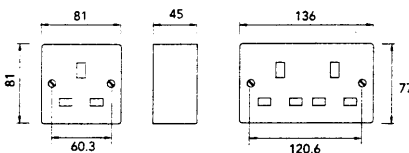
Features

- Very wide choice of finishes
- Wide range of options and switching configurations
- Optional neon indicators
- Minimum 3mm contact gap
- Switch contacts with welded silver contacts on both surfaces for good continuity
- Round pin sockets
- Non-standard sockets
- 2 Pin operated shutters on 13A sockets
- Earth pin operated shutters on round pin sockets (except 2A)

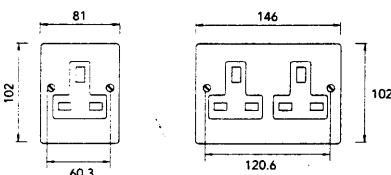
Dimensions



All flush 1 gang and 2 gang sockets.
Logic thick front plates are 12.5mm deep



All surface 1 gang and 2 gang sockets.



Floor mounted 1 gang and 2 gang sockets.

Technical specification

Electrical

Voltage rating:	250 V a.c.
Current rating:	
13A sockets:	13A per gang
Filtered sockets:	13A total
Round pin sockets:	2,5 or 15A per socket
Terminal capacity:	
13A sockets:	3 x 2.5mm ² 3 x 4.0mm ² 2 x 6.0mm ²
2A and 5A round pin sockets:	3 x 1.5mm ² 2 x 2.5mm ²
15A round pin sockets:	3 x 1.5mm ² 3 x 2.5mm ² 2 x 4.0mm ²

Physical

Ambient operating temperature:	- 5°C to + 40°C (not to exceed an average of more than 25°C in any 24 hour period).
IP Rating:	IP4X
Max.installation altitude:	2000 metres

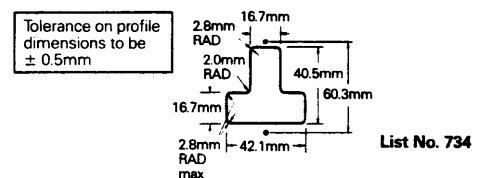
Installation

Socket outlets can be wall or bench mounted. Do not mount or use as a trailing socket or where they may be subjected to excessive moisture or dampness.

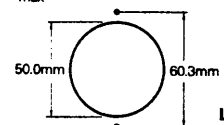
2A sockets are unshuttered. The 16th edition of the IEE Wiring Regulations (Section 553-01-04) does not recommend the use of unshuttered sockets in household situations.

Panel mounting sockets

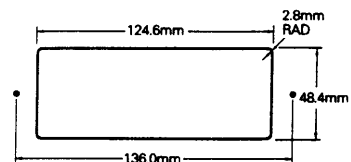
Cut-out details



List No. 734



List No. 735



List No. 2532

The panel onto which the socket-outlets are mounted must extend a minimum of 10mm in each direction from the aperture. Maximum panel thickness 2mm

Cable Management

Most Socket outlets can be mounted in a variety of M.K. trunking systems. See M.K. catalogue for further details.

