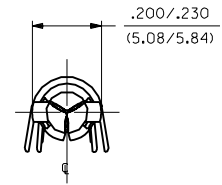
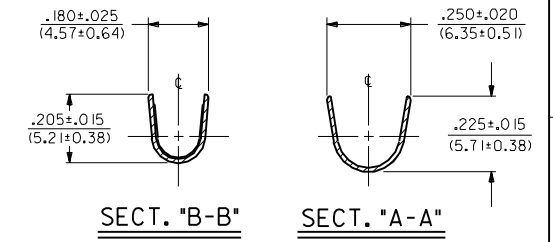
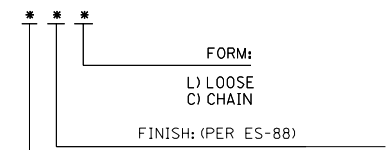


PART NO.	ENG. NO.	CHARACTERISTICS		
		MATERIAL	FINISH	FORM
PRELIMINARY	42546-0001	A	2	L
18-12-1607	42546-0002	A	2	C
PRELIMINARY	42546-0003	A	3	L
PRELIMINARY	42546-0004	A	3	C



CHARACTERISTICS LEGEND



FORM:
L) LOOSE
C) CHAIN

FINISH: (PER ES-88)

- (*P* PRECEDING FINISH NO. DESIGNATES PREPLATED MATERIAL)
- 1) UNFINISHED
 - 2) P122 ELECTRO TIN PLATE .000150/(0.0038) MIN. OVER .000030/(0.00076) MIN. NICKEL
 - 3) P901 HOT TIN DIP .000020/(0.0005) MIN.

MATERIAL: (SEE MATERIAL NOTES)

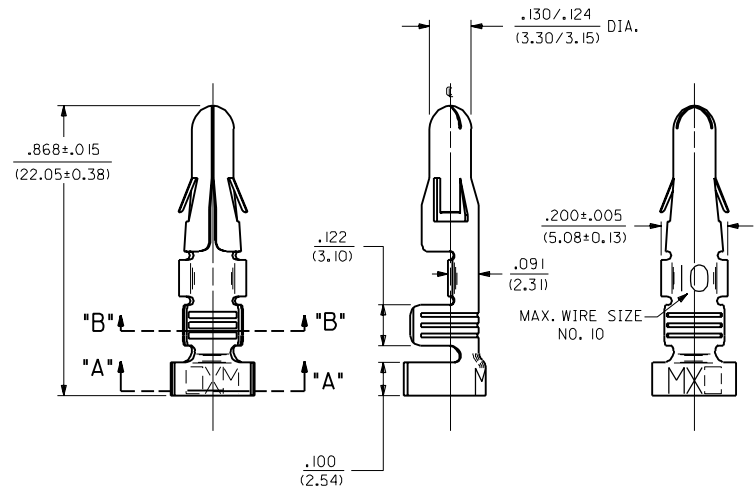
A) PHOS. BRONZE PER ES-124-E6

NOTES:

1. TERMINAL FOR USE WITH .125/(3.17) SERIES HOUSINGS AND WILL ACCEPT 10 THRU 14 AWG WIRE HAVING A .180/(4.57) MAX. DIAMETER INSULATION.
2. INSERTION FORCE: 6.0 LBS. MAX. WHEN TERMINAL IS INSERTED INTO .125/(3.17) DIA. CORE HOLE.
3. PULL OUT FORCE: 30 LBS. MIN. RETENTION IN HOUSING .

FINISH CODES:

- 901 HOT TIN DIP .000020/(0.0005) MIN.
122 ELECTRO TIN PLATE .000150/(0.0038) MIN. OVER .000030/(0.00076) MIN. NICKEL OVERALL



MATERIAL NOTES:

1. PHOSPHOR BRONZE, ALLOY #C51000;
.013/(0.33) THICK, EXTRA HARD TEMPER

A	FINAL RELEASE	ERO 29660	3-14-90	RW
I	PRELIM. RELEASE	ERO 29549	1-30-90	RW

A	I	A	I
MFG.	SH.	REV.	LTR.
			REVISIONS

DIMENSIONS SHOWN METRIC (INCH UNLESS OTHERWISE SPECIFIED) TOLERANCES: ANGULAR ± .05° TO 10°		TITLE	
3 PLACE ± .010	---	CRIMP TERMINAL, MALE, .125/(3.17) DIA 10-14 AWG .180/(4.57) DIA. INSUL. P-B	
2 PLACE ± .014	± 0.25	MOLEX INCORPORATED	
1 PLACE ---	± 0.35	LITTLE ROCK, AR 60532 U.S.A.	
DRAFT WHERE APPLICABLE MUST REMAIN WITHIN DIMENSIONS		SHEET NO. 1 OF 1 DATE 1/30/90	
PART NO. SEE CHART		DRAWING NO. SD-42546-*	
DRAWN BY: RW	CHECKED BY: RW	FILE NAME: S42546X1.DWG	DIV. CP
APP'D BY: CWF	SCALE: 4 : 1	THIS DRAWING CONTAINS INFORMATION THAT IS PROPRIETARY TO MOLEX INC. AND SHOULD NOT BE USED WITHOUT WRITTEN PERMISSION.	