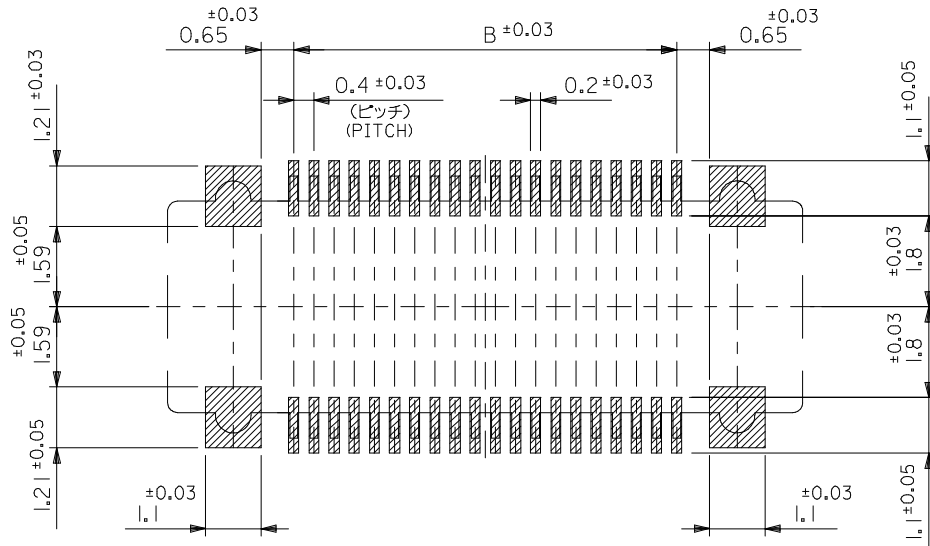


19.3	15.6	20.6	54765-8070	54765-8009	80
17.3	13.6	18.6	-7070	-7009	70
14.1	10.4	15.4	△ -5470	△ -5409	54
13.3	9.6	14.6	△ -5070	△ -5009	50
12.5	8.8	13.8	△ -4670	△ -4609	46
12.1	8.4	13.4	△ -4470	△ -4409	44
11.3	7.6	12.6	△ -4070	△ -4009	40
9.3	5.6	10.6	▽ -3070	▽ -3009	30
8.1	4.4	9.4	▽ -2470	▽ -2409	24
7.7	4.0	9.0	54765-2270	54765-2209	22
C	B	A	EMBOSSSED TAPE PKG. ORDER No. オーダー番号	MATERIAL NO.	CIRCUIT

REVISED EC NO: J2009-0301 DRWN: MABEI 2008/08/27 CHKD: THARUYAMA 2008/08/28 APPR: NUKITA 2008/08/28	GENERAL TOLERANCES (UNLESS SPECIFIED)		DIMENSION STYLE MM ONLY		SCALE ---	MODEL NO. 54765-***9
	10 UNDER ±0.2 10 OVER 30 UNDER ±0.25 30 OVER ±0.3	DRAWN BY M. NINOMIYA DATE '04/02/19	TITLE 0.4 B-TO-B REC HSG ASSY WITH GUIDE HGT=1.5 NI -LEAD FREE-		DESIGN UNITS METRIC	THIRD ANGLE PROJECTION
	ANGULAR ±3 ° DRAFT WHERE APPLICABLE MUST REMAIN WITHIN DIMENSIONS	CHECKED BY K. TOJO DATE '04/02/19	MOLEX INCORPORATED		DOCUMENT NO. SD-54765-030	SHEET NO. 1 OF 2
	SEE TABLE	APPROVED BY M. SASAO DATE '04/02/19	THIS DRAWING CONTAINS INFORMATION THAT IS PROPRIETARY TO MOLEX INCORPORATED AND SHOULD NOT BE USED WITHOUT WRITTEN PERMISSION			



参考基板レイアウト (マウント面)
P.C.BOARD PATTERN DIMENSION (REFERENCE)
(MOUNTING AREA)

注記 NOTES

1. 使用材料 MATERIAL

ハウジング: 液晶ポリマー ガラス充填 UL94V-0 (黒)
HOUSING: LIQUID CRYSTAL POLYMER (GLASS FILLED)
UL94V-0 (COLOR: BLACK)
ターミナル: リン青銅 (t=0.15)
TERMINAL: PHOSPHOR BRONZE (t=0.15)
金具: リン青銅 (t=0.15)
FITTING NAIL: PHOSPHOR BRONZE (t=0.15)

2. メッキ仕様 PLATING

ターミナル TERMINAL

金メッキ 0.25マイクロメートル以上 (コンタクト部)
GOLD 0.25MICROMETER MINIMUM (CONTACT AREA)
金メッキ 0.4マイクロメートル以下 (テール部)
GOLD 0.4MICROMETER MAXIMUM (TAIL AREA)
下地メッキ: ニッケルメッキ 1.5マイクロメートル以上
UNDER PLATING: NICKEL 1.5MICROMETER MINIMUM

*コンタクト部とテール部はニッケルメッキによって分断されている金メッキです。
DIVIDE INTO PARTS THE GOLD PLATING OF THE CONTACT PART AND THE TAIL PART BY THE NICKEL PLATING.

金具 FITTING NAIL

錫メッキ 1マイクロメートル以上
Sn 1 MICROMETER MINIMUM
下地メッキ: ニッケルメッキ 1マイクロメートル以上
UNDER PLATING: NICKEL 1 MICROMETER MINIMUM

3. (全極数/2) = 偶数の場合に適用。

APPLY FOR (CIRCUIT/2)=EVEN

4. 嵌合相手: 55604 シリーズ。
MATE WITH: 55604 SERIES.

5. テール平坦度は、0.08以下
テール及び金具の平坦度は、0.1以下

TAIL COPLANARITY TO BE 0.08 MAXIMUM.
TAIL AND FITTING NAIL
COPLANARITY TO BE 0.1 MAXIMUM.

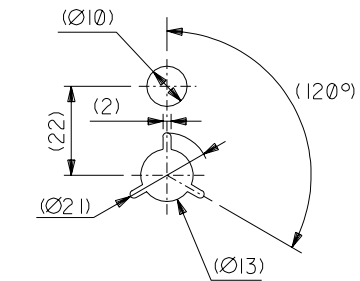
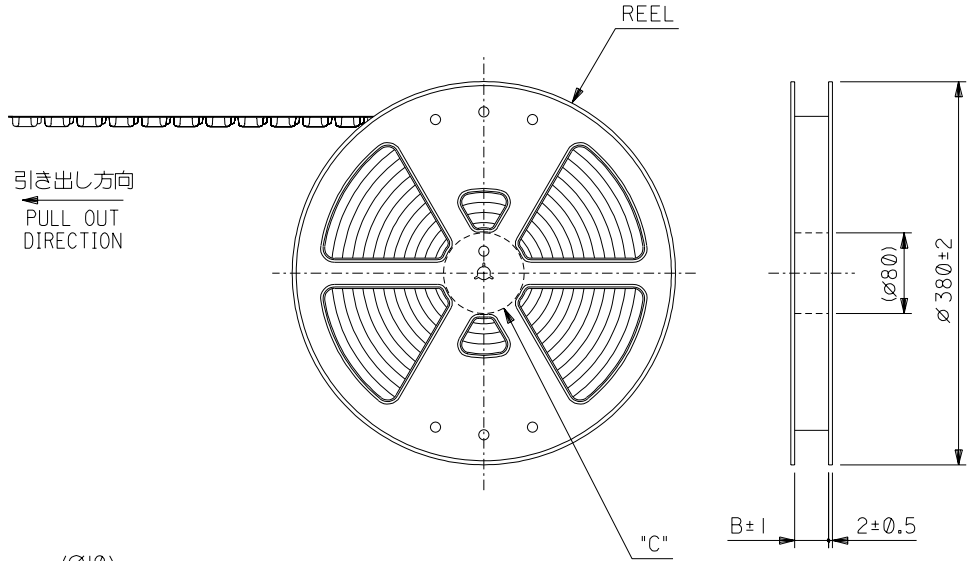
6. 本製品は 54765-***3 の鉛フリー品である。
THIS PRODUCT IS LEAD FREE OF 54765-***3.

MODEL NO. 54765-***9

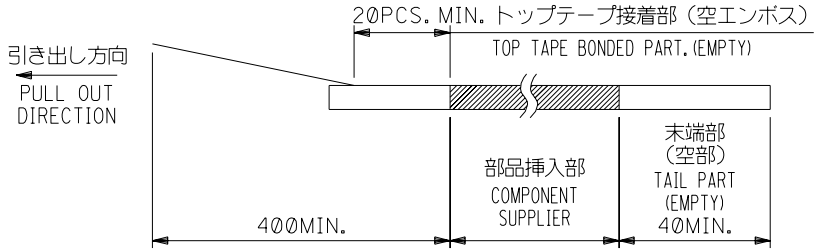
REVISED EC NO.: J2009-0301 DRWN: MWABEI 2008/08/27 CHKD: THARUYAMA 2008/08/28 APPR: NUKITA 2008/08/28	GENERAL TOLERANCES (UNLESS SPECIFIED)		DIMENSION STYLE MM ONLY		SCALE ---	DESIGN UNITS METRIC	THIRD ANGLE PROJECTION
	10 UNDER	± ---	DRAWN BY M. NINOMIYA	DATE '04/02/19	TITLE 0.4 B-TO-B REC HSG ASSY WITH GUIDE HGT=1.5 NI -LEAD FREE-		
	10 OVER 30 UNDER	± ---	CHECKED BY K. TOJO	DATE '04/02/19	MOLEX INCORPORATED		
	30 OVER	± ---	APPROVED BY M. SASAO	DATE '04/02/19	MATERIAL NO. SEE SHEET 1	DOCUMENT NO. SD-54765-030	SHEET NO. 2 OF 2
A	DESCRIPTION ANGULAR ± --- ° DRAFT WHERE APPLICABLE MUST REMAIN WITHIN DIMENSIONS	THIS DRAWING CONTAINS INFORMATION THAT IS PROPRIETARY TO MOLEX INCORPORATED AND SHOULD NOT BE USED WITHOUT WRITTEN PERMISSION					

注記 NOTES

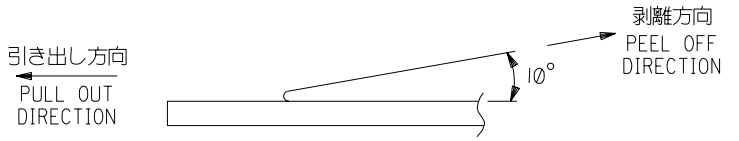
- 製品詳細寸法については図面 SD-54765-026 を参照下さい。
RE DETAILED DIMENSION, SEE SD-54765-026
- 梱包数量：2500個/リール
NUMBER OF CONNECTORS : 2500PCS/REEL
- リードテープ長さ LEAD TAPE LENGTH



DETAIL "C"



- トップテープの剥離強度： $0.1N \sim 1.3N(10gf \sim 130gf)$
(剥離方向は下図参照)
尚、本規格値は出荷時に適用。(但し、輸送時に剥離が発生しないこと。)
PEELING OFF FORCE OF TOP TAPE : $0.1N \sim 1.3N(10gf \sim 130gf)$
(PEELING DIRECTION AS SHOWN IN FOLLOWING FIG.)
THIS REQUIREMENT SHOULD BE APPLIED AT SHIPMENT.
PEEL OFF SHOULD NOT BE ALLOWED, DURING TRANSPORTATION.

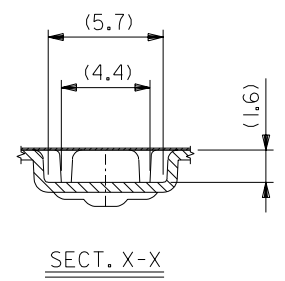
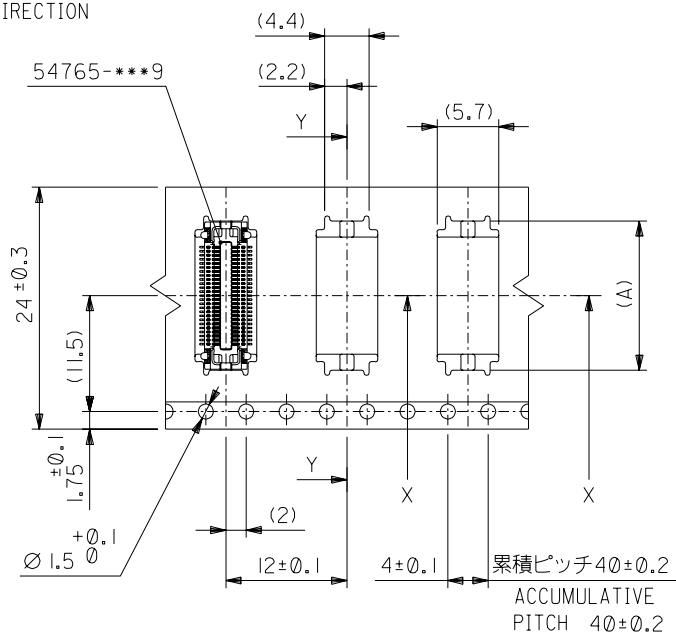
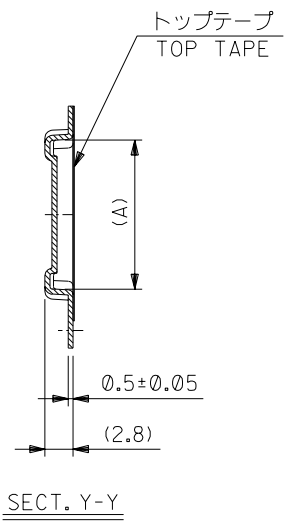


- 材料 MATERIAL
キャリアテープ (CARRIER TAPE)：ポリプロピレン (POLYPROPYLENE)
トップテープ (TOPTAPE)：PET, PE, PEF
リール (REEL)：ポリスチレン (PS) <リサイクル材を含む>
POLYSTYRENE (PS) <RECYCLE MATERIAL CONTAINED>
- 本製品は 54765-***4 の鉛フリー品である。
THIS PRODUCT IS LEAD FREE OF 54765-***4.

DO NOT SCALE DRAWING

EC NO. DRWN: CHK: APPR:		EC NO. DRWN: CHK: APPR:		EC NO. DRWN: CHK: APPR:		EC NO. DRWN: CHK: APPR:		RELEASED '04/02/19 EC NO. J2004-2532 DRWN: M.NINOMIYA CHK: K.TOJO APPR: M.SASAO		MATERIAL 材料 注記参照 SEE NOTES		GENERAL TOLERANCES: (UNLESS SPECIFIED) 一般公差		SCALE //		DESIGN UNITS <input checked="" type="checkbox"/> mm <input type="checkbox"/> INCH		THIRD ANGLE PROJECTION <input checked="" type="checkbox"/> mm <input type="checkbox"/> INCH		DIMENSIONS: <input type="checkbox"/> mm <input type="checkbox"/> INCH <input checked="" type="checkbox"/> mm ONLY		SHT REV	
										FINISH 仕上げ //		10 UNDER 未満 ±0.2		DRAWN BY & DATE M.NINOMIYA '04/02/19		TITLE: 0.4 B-To-B Rec Assy W/Gde (Hgt=1.5) [Ni Barrier] Embstp Pkg -LEAD FREE-							
										WIRE RANGE 適用電線範囲 //		10 OVER 30 UNDER 以上 未満 ±0.25		CHECKED BY & DATE K.TOJO '04/02/19		MOLEX INCORPORATED							
										INS. RANGE 被覆外径 //		30 OVER 以上 ±0.3		APPROVED BY & DATE M.SASAO '04/02/19		MATERIAL NO. SEE CHART		DRAWING NO. SD-54765-031		SHEET NO. 1 OF 3			
										ANGLE 角度 ±3°				CAD FILENAME SD-54765-031.S01						SIZE B			
THIS DRAWING CONTAINS INFORMATION THAT IS PROPRIETARY TO MOLEX INCORPORATED AND SHOULD NOT BE USED WITHOUT WRITTEN PERMISSION.																							

引き出し方向
PULL OUT
DIRECTION



24mm幅キャリアテープ
24mm WIDTH CARRIER TAPE

24	25.5	15.6	54765-5470	54	
		14.8	54765-5070	50	
		14.0	54765-4670	46	
		13.6	54765-4470	44	
		12.8	54765-4070	40	
		10.8	54765-3070	30	
		9.6	54765-2470	24	
		9.2	54765-2270	22	
キャリアテープ幅 CARRIER TAPE WIDTH		B	(A)	MATERIAL NO.	極数 CIRCUIT

EC NO. DRWN: CHK: APPR:	EC NO. DRWN: CHK: APPR:	EC NO. DRWN: CHK: APPR:	EC NO. DRWN: CHK: APPR:	EC NO. DRWN: CHK: APPR:	RELEASED '04/02/19 EC NO. J2004-2532 DRWN: M.NINOMIYA CHK: K.TOJO APPR: M.SASAO
					DESCRIPTION
					FINISH 仕上げ
					WIRE RANGE 適用電線範囲
					INS. RANGE 被覆外径

MATERIAL 材料	注記参照 SEE NOTES
FINISH 仕上げ	//
WIRE RANGE 適用電線範囲	//
INS. RANGE 被覆外径	//

GENERAL TOLERANCES: (UNLESS SPECIFIED) 一般公差	SCALE //	DESIGN UNITS <input checked="" type="checkbox"/> mm <input type="checkbox"/> INCH	THIRD ANGLE PROJECTION <input checked="" type="checkbox"/> <input type="checkbox"/>
10 UNDER 未満	±0.2		
10 OVER 30 UNDER 以上 未満	±0.25		
30 OVER 以上	±0.3		
ANGLE 角度	±3°		

MODEL NO. 54765-***0	DIMENSIONS: <input type="checkbox"/> mm <input type="checkbox"/> INCH <input checked="" type="checkbox"/> mm ONLY		SHT REV
DRAWN BY & DATE M.NINOMIYA '04/02/19	TITLE: 0.4 B-To-B Rec Assy W/Gde (Hgt=1.5) [Ni Barrier] Embstp Pkg -LEAD FREE-		REVISE ON CAD ONLY
CHECKED BY & DATE K.TOJO '04/02/19	APPROVED BY & DATE M.SASAO '04/02/19		
CAD FILENAME SD-54765-031.S02	MATERIAL NO. SEE CHART	DRAWING NO. SD-54765-031	SHEET NO. 2 OF 3
THIS DRAWING CONTAINS INFORMATION THAT IS PROPRIETARY TO MOLEX INCORPORATED AND SHOULD NOT BE USED WITHOUT WRITTEN PERMISSION.			SIZE B

DWG. NO. SD-54765-031

F

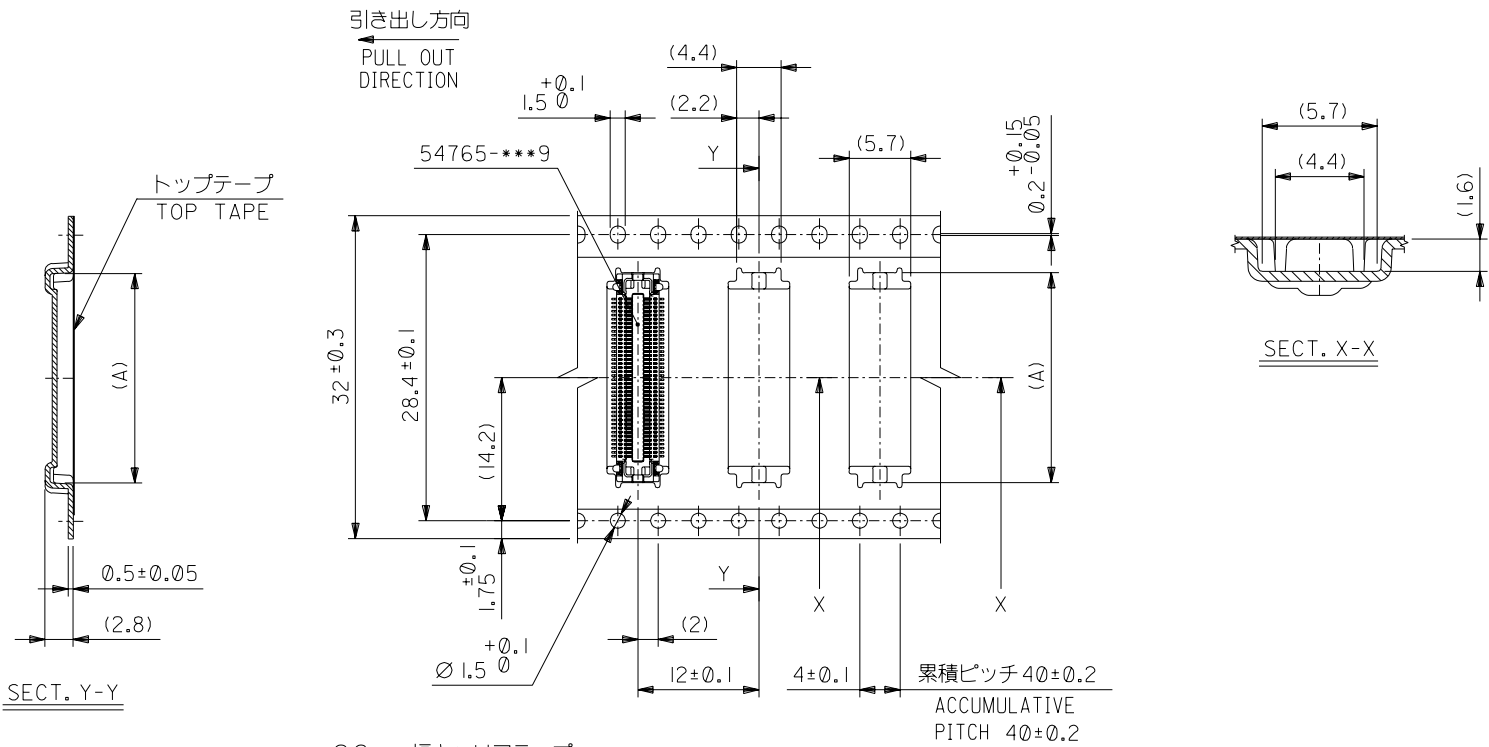
D

V

C

B

DO NOT SCALE DRAWING



32mm幅キャリアテープ
32mm WIDTH CARRIER TAPE

32	33.5	20.8	54765-8070	80
		18.8	54765-7070	70
キャリアテープ幅 CARRIER TAPE WIDTH		B	(A)	MATERIAL NO.
				極数 CIRCUIT

MODEL NO.	54765-***0	DIMENSIONS:		SHT	REV
DESIGN UNITS	<input checked="" type="checkbox"/> mm <input type="checkbox"/> INCH	<input type="checkbox"/> mm <input type="checkbox"/> INCH	<input checked="" type="checkbox"/> mm ONLY		REVISE ON CAD ONLY
THIRD ANGLE PROJECTION	<input checked="" type="checkbox"/> THIRD ANGLE				

EC NO.	RELEASED '04/02/19
DRWN: CH'K: APPR:	EC NO. J2004-2532
	DRWN: M.NINOMIYA
	CH'K: K.TOJO
	APPR: M.SASAO
EC NO.	DESCRIPTION
DRWN: CH'K: APPR:	
EC NO.	FINISH 仕上げ
DRWN: CH'K: APPR:	//
EC NO.	WIRE RANGE 適用電線範囲
DRWN: CH'K: APPR:	//
EC NO.	INS. RANGE 被覆外径
DRWN: CH'K: APPR:	//

MATERIAL 材料	注記参照 SEE NOTES
FINISH 仕上げ	//
WIRE RANGE 適用電線範囲	//
INS. RANGE 被覆外径	//

GENERAL TOLERANCES: (UNLESS SPECIFIED) 一般公差	SCALE 1/1	DESIGN UNITS <input checked="" type="checkbox"/> mm <input type="checkbox"/> INCH
10 UNDER 未満	±0.2	
10 OVER 30 UNDER 未満	±0.25	
30 OVER 以上	±0.3	
ANGLE 角度	±3°	

DRAWN BY & DATE	M.NINOMIYA '04/02/19	TITLE:	0.4 B-To-B Rec Assy W/Gde (Hgt=1.5) [Ni Barrier] Embstp Pkg -LEAD FREE-
CHECKED BY & DATE	K.TOJO '04/02/19	MOLEX INCORPORATED	
APPROVED BY & DATE	M.SASAO '04/02/19	CAD FILENAME	SD-54765-031.S03
		MATERIAL NO.	SEE CHART
		DRAWING NO.	SD-54765-031
		SHEET NO.	3 OF 3
THIS DRAWING CONTAINS INFORMATION THAT IS PROPRIETARY TO MOLEX INCORPORATED AND SHOULD NOT BE USED WITHOUT WRITTEN PERMISSION.			SIZE B

SD-54765-031.S03