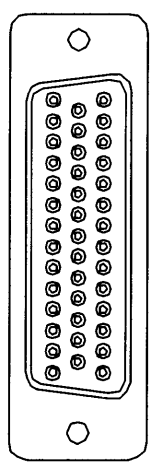
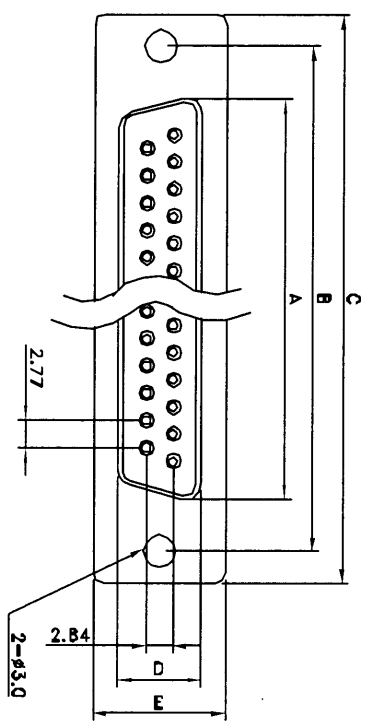


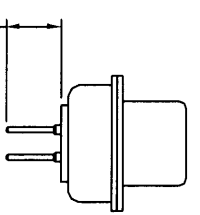
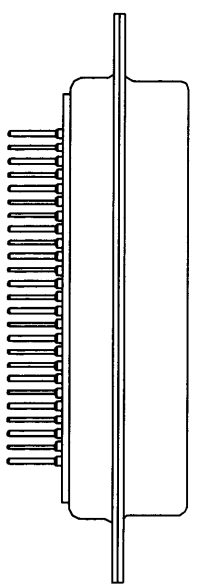
1 2 3 4 20

MATERIAL:
INSULATOR: PBT+30% GLASS FIBER
 UL94V-0
PIN CONTACTS: BRASS
GOLD PLATED
SHELL: STEEL,SPCC
 NICKEL PLATED OR TIN PLATED

ELECTRICAL DATA:
RATED VOLTAGE: 350V AC
5A
RATED CURRENT: 500V AC(RMS)
WITHSTAND VOLTAGE: OVER 1000 MΩ
INSULATION RESISTANCE: 5 MΩ AT 1A
CONTACT RESISTANCE: -40°C~100°C
TEMPERATURE:

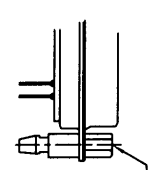


50 POSITIONS

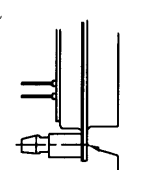


HOW TO ORDER
 5502-XXS-XX-XX
 CS: REAR RIVET
 OC: FRONT RIVET
 BR: BOARDLOCK-NUT RIVET
 BRJ: HEX SCREW + HEX NUT
 01: FULL GOLD
 S: MACHINE PIN FEMALE
 NO. OF POSITIONS

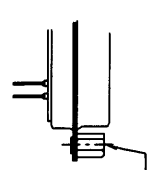
POSITIONS	A	B	C±0.5	D	E
9	16.33	24.99	30.81	7.90	12.90
15	24.99	33.32	39.14	7.90	12.90
19	30.00	38.98	44.90	7.90	12.90
23	35.30	44.30	50.30	7.90	12.90
25	38.38	47.04	53.04	7.90	12.90
37	54.84	63.50	69.32	7.90	12.90
50	62.43	61.11	66.93	10.74	15.37



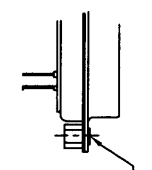
HEX SCREW + HEX NUT



BOARDLOCK-NUT RIVET



FRONT RIVET



REAR RIVET

NELTRON INDUSTRIAL CO., LTD

DESCRIPTION: D-SUB STANDARD DIP PCB MACHINE PIN

PART NO.: 5502-XXS-XX-XX

SIZE: A4

REV	DATE	FILE	BY
A	11-16-1999	5502-KXS-XX-XX	Jerry Chen
B			
C			
D			
E			

DRAWN:
CHECKED:
GENERAL TOLERANCE: ±0.2
UNT: MM
SCALE:
SHEET: 1 / 1
PROJECTION:

Northbrook, Illinois • (847) 272-8800
Melville, New York • (631) 271-6200
Santa Clara, California • (408) 985-2400
Research Triangle Park,
North Carolina • (919) 549-1400
Camas, Washington • (360) 817-5500



NELTRON INDUSTRIAL CO LTD
MR HUANG
2ND FL
184 CHENG-TEH RD, SEC 4
SHIH-LIN
TAIPEI 111 TAIWAN

RE: Project Number(s) - 99NK92168

Your most recent listing is shown below. Please review this information and report any inaccuracies to the UL Engineering staff member who handled your project.

For information on placing an order for UL Listing Cards in a 3 x 5 inch format, please refer to the enclosed ordering information.

ECBT2

May 9, 2000

Connectors For Use In Data, Signal, Control And Power Applications - Component

NELTRON INDUSTRIAL CO LTD
2ND FL 184 CHENG-TEH RD, SEC 4 SHIH-LIN, TAIPEI
111 TAIWAN

E144392

Wire to board connector, Cat. Nos. 1300, 1311, 5289H followed by -02 through -15. Cat. Nos. 8982H, 8980H, 8981H followed by -04. Cat. Nos. 2317RB, 2317R, 2317SB, 2317S, 2318HB, 2318H, 2417R, 2417B, 2418 followed by -02 through -15. Cat. Nos. 2226A followed by -01 through -40. Cat. No. 2226B followed by -02 through -80. Cat. No. 2221 followed by -06, -12. Cat. No. 2222 followed by -06. Cat. No. 2220 followed by -02 through -16. Cat. Nos. 2217R, 2217S, 2219R, 2217S followed by -02 through -15. Cat. No. 2218H followed by -01 through -15. Cat. No. 2026A followed by -01 through -40. Cat. No. 2026B followed by -02 through -80. Cat. No. 4400 followed by -44. Cat. No. 4401 followed by -10, -14, -16, -20, -24, -26, -30, -34, -40, -50, -60, -64. Cat. No. 4402 followed by -10, -14, -16, -20, -26, -34, -40, -44, -50, -60, -64. Cat. No. 4403 followed by -10, -14, -16, -20, -26, -30, -34, -40, -50, -60. Cat. No. 4404 followed by -14, -16, -18, -20. Cat. No. 4405 followed by -10, -14, -16, -20, -26. Cat. No. 4406 followed by -10, -14, -16, -20, -24, -26, -30, -34, -40, -50, -60, -64. Cat. No. 4501 followed by -20, -26, -32, -34, -40, -50, -52, -60, -68, -80, -100. Cat. No. 1200 followed by -03 through -09. Cat. No. 1005 followed by -50, -100.

P.C.B connector, Cat. No. 2162 followed by -16, -18, -20, -24. Cat. No. 2227 followed by -08, -14, -16, -18, -20, -24, -28, -40. Cat. No. 6603 followed by -72. Cat. No. 6602 followed by -30, -60. Cat. Nos. 1007, 1008 followed by -14, -20, -26, -30, -40, -50, -60, -68, -80, -100. Cat. No. 6601 followed by -20, -28, -32, -44, -52, -68, -84. Cat. No. 6603 followed by -68, -84, -85, -114, -121, -132. Cat. No. 1201 followed by -03 through -08. Cat. No. 1202 followed by -05. Cat. No. 2416R followed by -20, -26, -32, -34, -40, -50, -52, -60, -68, -80, -100. Cat. Nos. 2216R, 2216S followed by -10, -12, -14, -16, -20, -24, -26, -30, -34, -40, -50, -56, -60, -64. Cat. Nos. 2516R, 2516S followed by -20, -26, -32, -34, -40, -50, -52, -60, -68, -80, -100. Cat. Nos. 2223R, 2223S followed by -02 through -21. Cat. No. 2323S followed by -02 through -20. Cat. No. 2316S followed by -10, -14, -16, -20, -26, -30, -34, -40, -50, -60, -64. Cat. No. 2525 followed by -10, -12, -20, -30, -40, -50, -60, -80, -100. Cat. No. 2314S followed by -20, -26, -32, -34, -40, -50, -52, -60, -68, -80, -100. Cat. No. 2224 followed by -02 through -15. Cat. Nos. 2211R, 2211S followed by -01 through -40.

Cat. Nos. 2213R, 2213S followed by -02 through -80. Cat. No. 2212S followed by -02 through -40. Cat. No. 2214S followed by -02 through -80. Cat. Nos. 2215R, 2215S followed by -10, -12, -16, -18, -20, -26, -30, -34, -40, -50, -60. Cat. No. 2225 followed by -36, -44, -50, -62, -80, -86, -100. Cat. No. 2207S followed by -02 through -80. Cat. Nos. 2208R, 2208S followed by -02 through -80. Cat. No. 2209S followed by -01 through -40. Cat. Nos. 2210R, 2210S followed by -01 through -40. Cat. No. 2206S followed by -01 through -30. Cat. No. 4161Z followed by -32, -48, -64, -96.

Mini jumper, Cat. Nos. 2205, 2228 followed by -02.

Wire to wire connector, Cat. No. 8182 followed by -04. Cat. Nos. 5005, 5006 followed by -01, -02, -03, -04A, -04B, -05, -06, -09, -12, -15.

D-Sub connector, Cat. Nos. 5514R, 5514S followed by -13. Cat. Nos. 5512R, 5512S followed by -15, -26, -44, -62. Cat. No. 5511 followed by -09, -15, -25. Cat. No. 5510 followed by -15. Cat. Nos. 5509R, 5509S followed by -15, -26, -62.

Cat. Nos. 5506R, 5506S followed by -15, -26, -44, -62. Cat. Nos. 5506R, 5506S followed by -09, -15, -25, -37. Cat. Nos. 5504PF1, 5504SF1, 5504SF2, 5505R1, 5505R2, 5503S, 5503R followed by -09, -15, -25, -37. Cat. Nos. 5501R, 5501S, 5502 followed by -09, -15, -19, -23, -25, -37, -50.

Centronic connector, Cat. No. 5701 followed by -14, -24, -36. Cat. Nos. 5702, 5703, 5706 followed by -40. Cat. No. 5704 followed by -30. Cat. No. 5707 followed by -20.

Scart connector, Cat. Nos. 1109, 1111, 1113 followed by -21. Cat. Nos. 1009, 1011, 1013 followed by -21. Cat. Nos. 1114R, 1114S followed by -21.

Connectors, Model No. 1002S followed by 30, 40, 50, 60 or 68; Model No. 1003-R-50; Model No. 1010 followed by 50 or 68, followed by P-PN; Model No. 1211 followed by 04, 06 or 08, followed by 04, 06 or 08; Model No. 1223 followed by -04 through 30, followed by 02 or 03; Model No. 1224S followed by 04 through 27; Model No. 1224SM followed by 04 through 30; Model No. 1230S followed by 04 through 15; Model No. 1230R followed by 04 through 30; Model No. 1250HM followed by 02 through 15; Model No. 1251SM followed by 02 through 15; Model No. 1251RM followed by 02 through 15; Model No. 1251S followed by 02 through 15, followed by SMD; Model No. 1251R followed by 02 through 15, followed by SMD; Model No. 1310H followed by 02 through 15; Model No. 1394-06; Model No. 1778 followed by 16, 20, 22, 24, 28, 30, 32, 40, 42, 48, 52,

Underwriters Laboratories Inc. *

54, 56 or 64, followed by 03, 04 or 06; Model No. 1778MC followed by 16, 20, 24, 28, 30, 40, 42, 48, 52, 56 or 64, followed by 03, 04, 06 or 075; Model No. 1999P followed by 04 through 80; Model No. 1999S followed by 04 through 120, followed by A1, A2 or A3, followed by B1, B2 or B3; Model No. 2006H followed by 01, through 06; Model No. 2006S followed by 01 through 05; Model No. 2010 followed by 10 through 12, followed by H1, H2, H3 or H4; Model No. 2011-10; Model No. 2016 followed by 10, 12, 14, 16, 20, 22, 24, 26, 30, 34, 36, 40, 44, 50, 60, 64 or 68; Model No. 2018 followed by P or R, followed by 02 through 12; Model No. 2099P followed by 04 through 10; Model 2099S followed by 04 through 14; Model No. 2100P followed by 06 through 20; Model 2100S followed by 04 through 10; Model No. 2110 followed by 20, 30, 40, 50, 60, 80 or 100, followed by 34 or 44, followed by MM; Model No. 2114 followed by R, H or S, followed by 02 through 10; Model No. 2150-08; Model No. 2198S followed by 10, 24, 30, 40, 44, 50, 60, 70, 80, 90 or 100, followed by A1 or A2; Model No. 2199SA followed by 04 through 30, followed by 01 through 03; Model No. 2199SB followed by 02 through 10, followed by A1, A2 or A3, followed by B1 or B2, followed by C1 or C2; Model No. 2199K followed by 0 or 5, followed by 04 through 30, followed by A1, A2 or A3, followed by B1 or B2, followed by C1 or C2; Model No. 2200SA followed by 05 through 50, followed by A1 or A2; Model No. 2200SB followed by 10 through 50, followed by A1 or A2; Model No. 2204 followed by S or R, followed by 02 through 30; Model No. 2206SA followed by 01 through 36, followed by 46; Model No. 2206SB followed by 02 through 16, followed by 46; Model No. 2206PA followed by 01 through 36, followed by 739; Model No. 2206PB followed by 02 through 50, followed by 739; Model No. 2227MC followed by 06, 08, 10, 14, 16, 18, 20, 22, 24, 28, 32, 36, 40, 42, 48 or 64, followed by 03, 06 or 09; Model No. 2233 followed by S or R, followed by 03 through 120; Model No. 2317 followed by SEH or REH, followed by 02 through 15; Model No. 2317 followed by RM or SM, followed by 02 through 10; Model No. 2318 followed by HM or HEH, followed by 02 through 15; Model No. 2323 followed by R or S, followed by 04 through 23, followed by A or B; Model No. 1016 followed by 09 or 15; Model No. 2007H followed by 02 through 06; Model No. 2007S followed by 02 through 05; Model No. 2324S followed by 04 through 22; Model No. 2324R followed by 03 through 30; Model No. 2392-5100; Model No. 2417 followed by SB or RB, followed by 02 through 08; Model No. 2418HB followed by 02 through 15; Model No. 3750R followed by 02 through 12; Model No. 3750S followed by 02 or 03; Model No. 3920 followed by 02, 03, 04, 06, 09 or 12; Model No. 3921 followed by 02, 03, 04, 06, 09 or 12; Model No. 4181S followed by R, S or BE, followed by 02 through 10; Model No. 4407 followed by 10, 14, 16, 20, 26, 34, 40, 50, 60 or 64; Model No. 4408 followed by 10, 12, 16, 20, 24, 26, 30, 34, 40 or 44; Model Nos. 5075AS-04, 5075BR-04, 5075AR-08B, 5075AR-08; Model No. 5197H followed by 02 through 12; Model No. 5197 followed by S or R, followed by 02 through 04, may be followed by 01; Model No. 5504F3-09P; Model No. 5513S followed by 3W3, 5W1, 7W2, 8W8, 11W1 or 13W3; Model No. 5515-13W3; Model No. 5557 followed by 02, 04, 06, 08, 10, 12, 14, 16, 18 or 20; Model No. 5559 followed by 02, 04, 06, 08, 10, 12 or 14; Model No. 5566S followed by 02, 04, 06, 08, 10, 12, 14, 16, 18 or 20; Model No. 5569R followed by 02, 04, 06, 08, 10, 12, 14, 16, 18 or 20, may be followed by 01; Model No. 6127 followed by S or P, followed by 02 through 31; Model No. 6604P followed by 01 through 40, followed by 9.1, 10.0, 10.6, 12.1 or 13.7; Model No. 6604S followed by 01 through 40, may be followed by WR; Model No. 6610-321; Model No. 6610P-321, 6615-168-LE; Model No. 8981 followed by SA, SM or R, followed by 04; Model No. 8982S followed by 02 through 08; Model No. SQJ followed by 24S, 26S, 28S, 28L, 32S or 40L; Model No. 4410-40.

Marking: Company name or trademark **NELTRON** and catalog designation.

See General Information Preceding These Recognitions

For use only in equipment where the acceptability of the combination is determined by Underwriters Laboratories Inc.