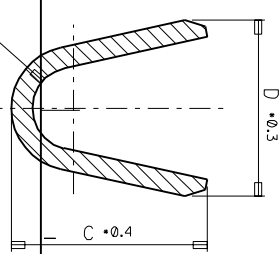
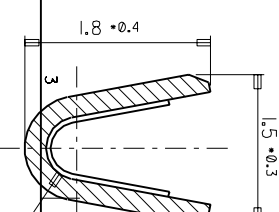
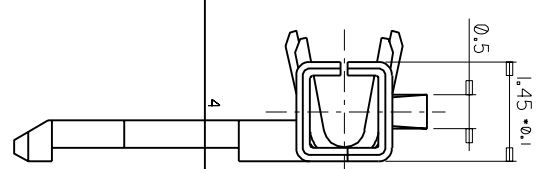
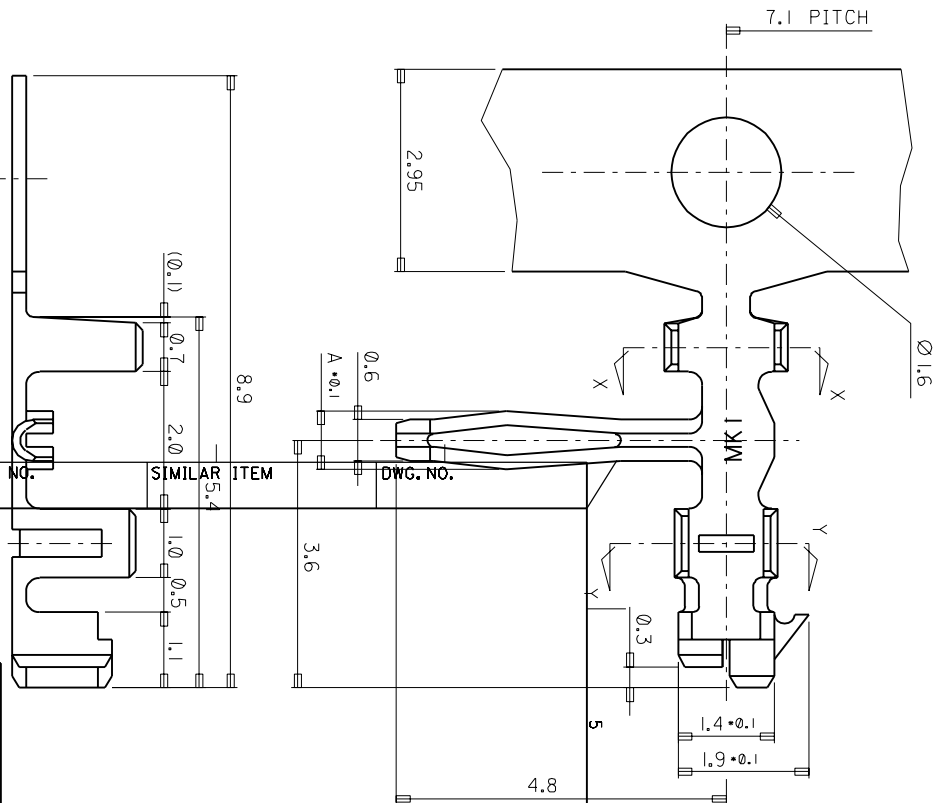


PROJECT NO. SIMILAR ITEM DWG. NO.
35021-1*** SD 35021-1***

DO NOT SCALE DRAWING
DIMENSION IN METRIC



- NOTE
1. MATERIAL
1) BRASS (CDA 260)
2) PHOSPHOR BRONZE (CDA 510)
 2. PLATING
1) PRE PLATED - TIN OVER COPPER
2) POST PLATED - TIN/LEAD OVER COPPER
 3. USED HOUSING : 35022-00** / 35023-00**

POST-PLATED	PHOS. BRON.	AWG #24-#30	1.8	1.9	R0.4	0.85	35021-1310
PRE-PLATED	PHOS. BRON.	(INS. DIA: Ø 1.5 MAX.)	1.8	1.9	R0.4	0.85	35021-1301
PRE-PLATED	BRASS						35021-1201
POST-PLATED	PHOS. BRON.	AWG #22-#30 (INS. DIA: Ø 1.9 MAX.)	2.5	2.5	R0.7	1.05	35021-1101
POST-PLATED	BRASS						35021-1001
PLATING	PHOS. BRON.						35021-1110

REVISED
EC NO. KOR1998-0091
DRWN: HSSHIN(980609)
CHK: JKOH
APPR: CWLEE

REVISIONS
REV DESCRIPTION
C CRITICAL

QUALITY SYMBOLS	GENERAL TOLERANCES: (UNLESS SPECIFIED)	SCALE	DESIGN UNITS	THIRD ANGLE PROJECTION	TITLE
MAJOR	MM INCH	15-1	MM INCH	<input type="checkbox"/> <input checked="" type="checkbox"/>	R/A B-IN TERMINAL
4 PLACES	±0.1	DRAWN BY & DATE			
3 PLACES	±0.1	CHECKED BY & DATE			
2 PLACES	±0.1	APPROVED BY & DATE			
1 PLACE	±0.3	CAD FILENAME			
	ANGULAR: ± 0°	CAD FILENAME			

DEPART. UNLESS APPLICABLE, MUST REMAIN WITHIN DIMENSIONS

THIS DRAWING CONTAINS INFORMATION THAT IS PROPRIETARY TO MOLEX INCORPORATED AND SHOULD NOT BE USED WITHOUT WRITTEN PERMISSION.

MATERIAL NO. 350-21-1***
DRAWING NO. SD 35021-1***
SHEET NO. 1 OF 1
SIZE

MOLEX INCORPORATED
KOREA

8 7 6 5 4 3 2 1

MX-A8