

R13 Round Rocker Switches 6A 250Vac



SP 6A 250Vac T85,
DP 10(4)A 250Vac T85



UL CSA SP 10A 125Vac & 6A 250Vac (For 16A call the factory)
UL CSA DP 8A 125/250Vac
UL 85°C, file E67774(S) CSA file LR45128

Single pole has μ contact gap
Technical data on pages 4 & 5

Standard products

Are supplied with the body and rocker colour, print & lamp voltage shown in the product illustration and description

R13 112A AAA

TERMINAL FUNCTION ROCKER BODY PRINT, COLOUR, VOLTAGE ETC

PRODUCT DETAILS



SP ON - OFF μ
Cat no.
R13 112A AAA



SP ON - OFF μ
Lit 230V
Cat no.
R13 112B NAC



SP ON - OFF μ
Cat no.
R13 112A AAB



SP ON - OFF μ
Cat no.
R13 112C AAA



SP ON - OFF μ
Lit 230V
Cat no.
R13 112B NAA



SP ON - OFF - ON μ
Cat no.
R13 112D AAA



SP ON - OFF μ
Lit 230V
Cat no.
R13 112B NAB



SP ON - OFF μ
(Momentary On)
Cat no.
R13 208F AAA*



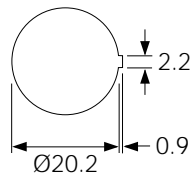
DP ON - OFF
Cat no.
R13 244A AAA



DP ON - OFF μ
Lit 230V
Cat no.
R13 244B NAA

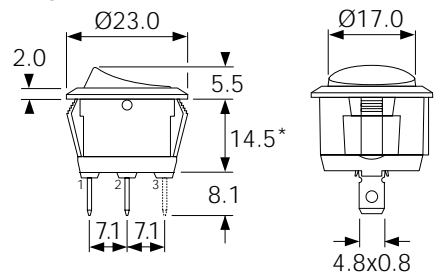
DIMENSIONS (mm)

Panel cut-out



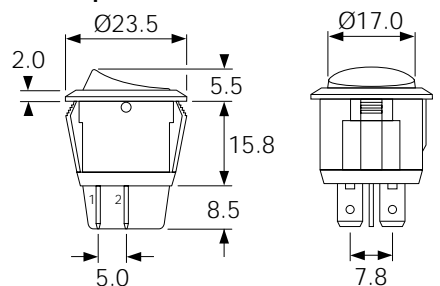
Snap fixing into panel thickness up to 3.0

Single pole



* R13 208F has 12.5mm deep body

Double pole



R13 Round Rocker Switches 6A 250Vac



6A 250Vac T85

RA SE UL CSA 10A 125Vac & 6A 250Vac (For 16A call the factory)
UL 85°C, file E67774(S) CSA file LR45128

Single pole has μ contact gap
Technical data on pages 4 & 5

Special products

Are made to order and can be supplied with a range of body and rocker/lens colours, print & lamp voltage

Call the factory for availability to your special requirements

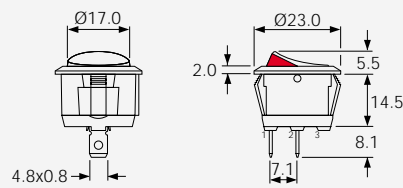
R13 112A2 - -

TERMINAL FUNCTION ROCKER BODY PRINT, COLOUR, VOLTAGE ETC

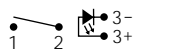
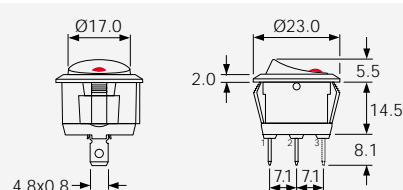
PRODUCT DETAILS



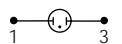
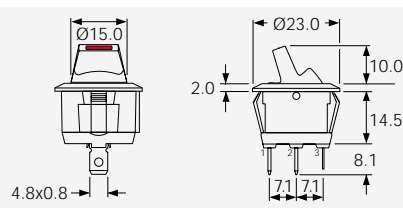
SP ON - OFF μ
Bright colour ON signal
Cat no.
R13 112A2 - -



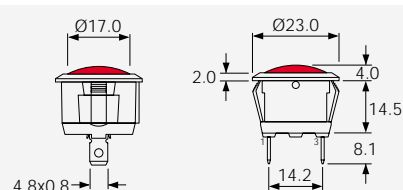
SP ON - OFF μ
Lit Window
Cat no.
R13 112B2 - -



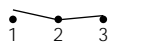
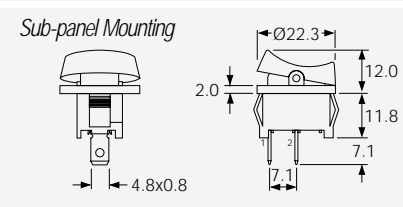
SP ON - OFF μ
Paddle tip has red LED
Cat no.
R13 112LP - -



Indicator light
Cat no.
R9 92B - - -

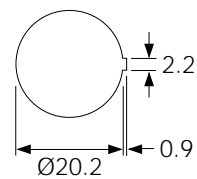


SP ON - OFF μ
R13 211A - - -



SP ON - ON μ
R13 211C - - -

PANEL CUT-OUT (mm)



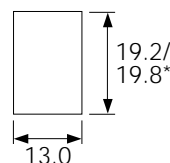
For R13 112A2
R13 112B2
R13 112LP
R9 92B

Snap fixing into panel thickness up to 3.0



Protective cover L188

Snaps on to bodies (not R13 211 or R13 112LP) but reduces panel thickness by 0.6mm



For R13 211A
R13 211C

* Dependent on panel thickness 0.75 - 3.0

