

6

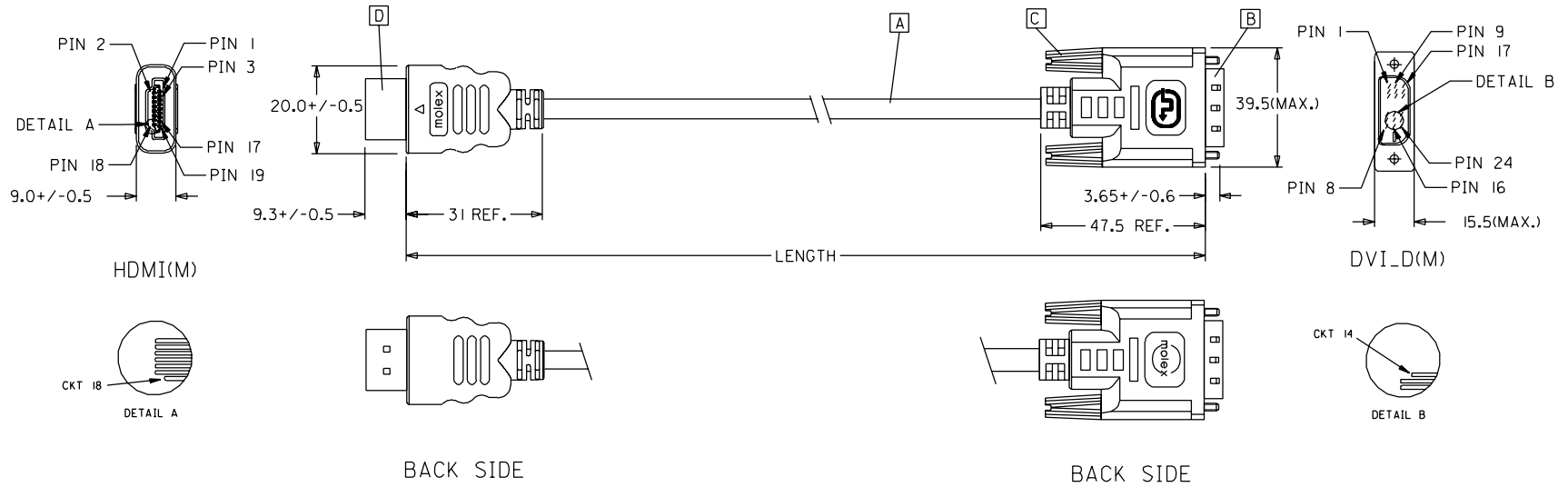
5

4

3

2

1



88768-3620	HDMI TO DVI-D(M) CABLE ASS'Y,3M	3000+/-80	BLACK	5,5MM(TMDS - AWG*30)
88768-3610	HDMI TO DVI-D(M) CABLE ASS'Y,2M	2000+/-60	BLACK	5,5MM(TMDS - AWG*30)
88768-3600	HDMI TO DVI-D(M) CABLE ASS'Y,1M	1000+/-30	BLACK	5,5MM(TMDS - AWG*30)
88768-3530	HDMI TO DVI-D(M) CABLE ASS'Y,5M	5000+/-100	BLACK	7,3MM(TMDS - AWG*28)
88768-3520	HDMI TO DVI-D(M) CABLE ASS'Y,3M	3000+/-80	BLACK	7,3MM(TMDS - AWG*28)
88768-3510	HDMI TO DVI-D(M) CABLE ASS'Y,2M	2000+/-60	BLACK	7,3MM(TMDS - AWG*28)
88768-3500	HDMI TO DVI-D(M) CABLE ASS'Y,1M	1000+/-30	BLACK	7,3MM(TMDS - AWG*28)
MX P/N	DESCRIPTION	LENGTH	CABLE COLOR	CABLE OD

EC NO. DRWN: CHK: APPR:	DESCRIPTION	QUALITY SYMBOLS	GENERAL TOLERANCES: (UNLESS SPECIFIED)		SCALE N.S.T	DESIGN UNITS <input checked="" type="checkbox"/> mm <input type="checkbox"/> INCH	THIRD ANGLE PROJECTION	<input type="checkbox"/> mm INCH	<input type="checkbox"/> mm INCH	<input checked="" type="checkbox"/> mm ONLY	SHT	REV
		MAJOR ▼ = 0 CRITICAL ▽ = 0	mm	INCH	DRAWN BY & DATE Louis Chen 03/11/17	TITLE: HDMI(M) TO DVI-D(M) CABLE ASS'Y			MOLEX INCORPORATED			
C	REV	4 PLACES ±0.1 ±.1	3 PLACES ±0.1 ±.1	2 PLACES ±0.1 ±.1	1 PLACE ±0.1 ±.1	ANGULAR: ± °	CAD FILENAME S88768AA.SOI	MATERIAL NO. SEE TABLE	DRAWING NO. SD-88768-001	SHEET NO. 1 OF 2	THIS DRAWING CONTAINS INFORMATION THAT IS PROPRIETARY TO MOLEX INCORPORATED AND SHOULD NOT BE USED WITHOUT WRITTEN PERMISSION.	
											SIZE A4	

6

5

4

3

2

1

NOTE: 1. OVERMOLD SPECIFICATION

1.1 DVI BOOT MOLDED WITH SNOW WHITE PVC RESIN P/N.

1.1.1 UL94V-0

1.1.2 HARDNESS (DUROMETER): SHORE A 90-95

1.2 HDMI OUTER MOLD WITH BLACK PVC RESIN. UL94V-0.

2. MECHANICAL SPECIFICATION

2.1 CABLE SHOULD STAND THE PULL FORCE 89-11IN FOR 30 SECONDS WITH NO VISIBLE TERMINATION DAMAGE.

2.2 CABLE SHOULD PASS THE FLEX TEST IN 100 CYCLES AT EACH OF PLANES, PER EIA 364-41, CONDITION 1.

3. CABLE ELECTRICAL SPECIFICATION

3.1 DIELECTRIC STRENGTH: 300V AC FOR 10MS.

3.2 INSULATION RESISTANCE: 10 MEGA Ohms MIN.

3.3 DIFFERENTIAL LINES CHARACTERISTIC IMPEDANCE: 100+/-10 Ohms @TDR.

3.4 CONTACT RESISTANCE: 2 OHMS(MAX.).

3.5 SIGNALS CROSSTALK(FEXT): 5% (MAX.) PER ANSI/EIA-364-90.






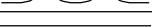


3.6 SIGNALS INTRA-PAIR SKEW : <150 ps.

4. DVI CONNECTOR SPECIFICATION

4.1 REFER TO PRODUCT SPEC. PS74320-0001.

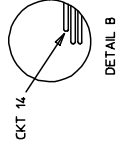
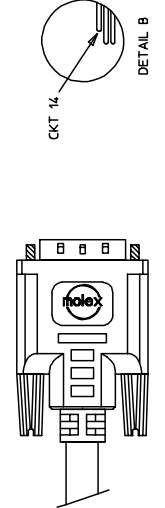
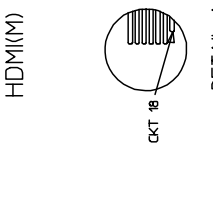
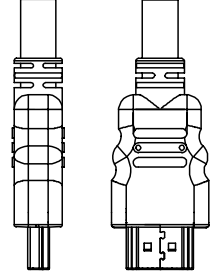
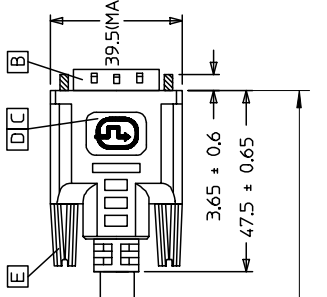
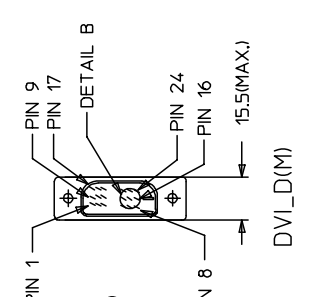
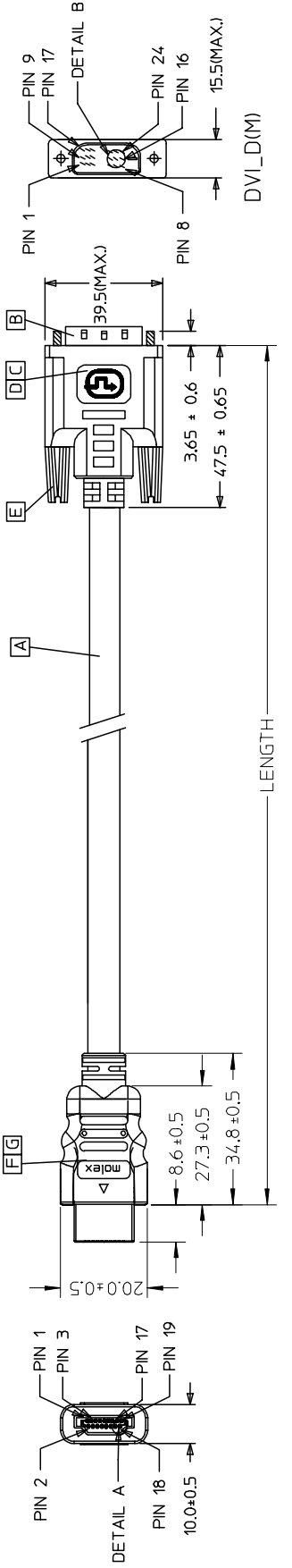
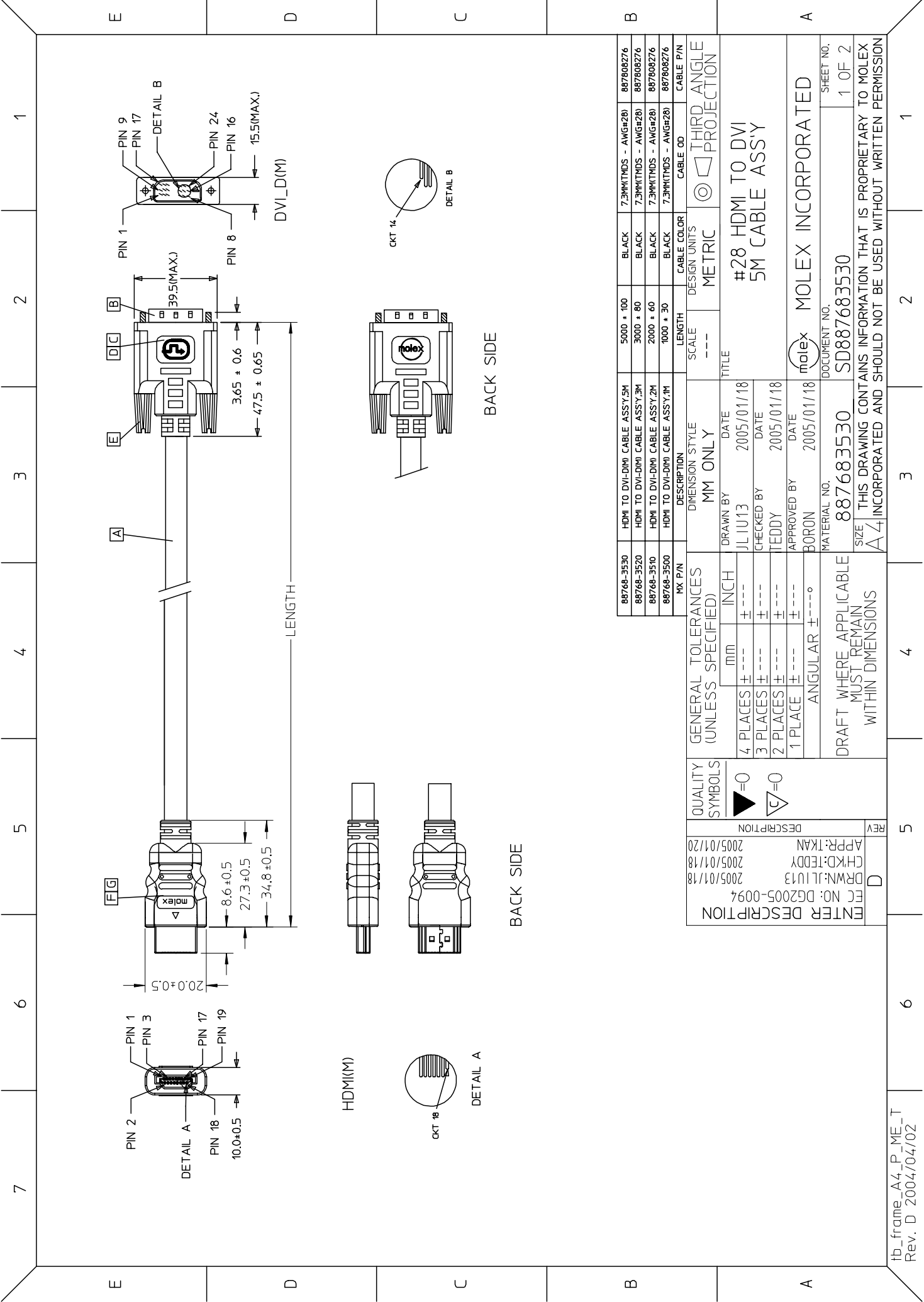
4.2 CONTACT PLATING: AU FLASH.

5. MATERIAL MUST MEET MANAGEMENT REGULATIONS FOR ENVIRONMENT (MX TS-0002).

SHIELD	SHIELD		GROUND
PIN 19	PIN 16	=====	HOT PLUG DETECT
PIN 18	PIN 14	=====	POWER +5V
PIN 17	PIN 15	=====	GROUND(+5V&DDC)
PIN 16	PIN 7	=====	DDC DATA(SDA)
PIN 15	PIN 6	=====	DDC CLOCK(SCL)
PIN 11	PIN 22	=====	TMDS CLOCK SHIELD
PIN 12	PIN 24		TMDS CLOCK-
PIN 10	PIN 23		TMDS CLOCK+
PIN 8	PIN 19	=====	TMDS DATA 0 SHIELD
PIN 9	PIN 17		TMDS DATA 0-
PIN 7	PIN 18		TMDS DATA 0+
PIN 5	PIN 11	=====	TMDS DATA 1 SHIELD
PIN 6	PIN 9		TMDS DATA 1-
PIN 4	PIN 10		TMDS DATA 1+
PIN 2	PIN 3	=====	TMDS DATA 2 SHIELD
PIN 3	PIN 1		TMDS DATA 2-
PIN 1	PIN 2		TMDS DATA 2+
HDMI	DVI-D	COLOR	CABLE FUNCTION

ITEM	DESCRIPTION	QTY.
D	HDMI PLUG ASSY'	1
C	DVI THUMB SCREW	2
B	DVI_D SINGLE CHANNEL G/F CONNECTOR	1
A	DVI SINGLE LINK CABLE (SEE TABLE)	1

EC NO. DRWN: CHK: APPR:  C	DESCRIPTION  REV	QUALITY SYMBOLS MAJOR ▼ = 0 CRITICAL ▽ = 5	GENERAL TOLERANCES: (UNLESS SPECIFIED) <table border="1"> <tr> <td></td> <td>mm</td> <td>INCH</td> </tr> <tr> <td>4 PLACES</td> <td>±0.</td> <td>±.</td> </tr> <tr> <td>3 PLACES</td> <td>±0.</td> <td>±.</td> </tr> <tr> <td>2 PLACES</td> <td>±0.</td> <td>±.</td> </tr> <tr> <td>1 PLACE</td> <td>±0.</td> <td>±.</td> </tr> </table>		mm	INCH	4 PLACES	±0.	±.	3 PLACES	±0.	±.	2 PLACES	±0.	±.	1 PLACE	±0.	±.	SCALE N.S.T DESIGN UNITS <input checked="" type="checkbox"/> mm <input type="checkbox"/> INCH THIRD ANGLE PROJECTION <input type="checkbox"/> mm INCH <input type="checkbox"/> INCH mm <input checked="" type="checkbox"/> mm ONLY	SHT REV REVISE ON CAD ONLY
			mm	INCH																
		4 PLACES	±0.	±.																
		3 PLACES	±0.	±.																
2 PLACES	±0.	±.																		
1 PLACE	±0.	±.																		
DRAWN BY & DATE Louis Chen 03/11/17		TITLE: HDMI(M) TO DVI-D(M) CABLE ASS'Y																		
CHECKED BY & DATE Teddy Kan 03/11/17		APPROVED BY & DATE Boron Chen 03/11/17																		
CAD FILENAME S88768AA.S02		MATERIAL NO. SEE TABLE	DRAWING NO. SD-88768-001	SHEET NO. 2 OF 2																
THIS DRAWING CONTAINS INFORMATION THAT IS PROPRIETARY TO MOLEX INCORPORATED AND SHOULD NOT BE USED WITHOUT WRITTEN PERMISSION.				SIZE A4																



DETAIL A

BACK SIDE

BACK SIDE

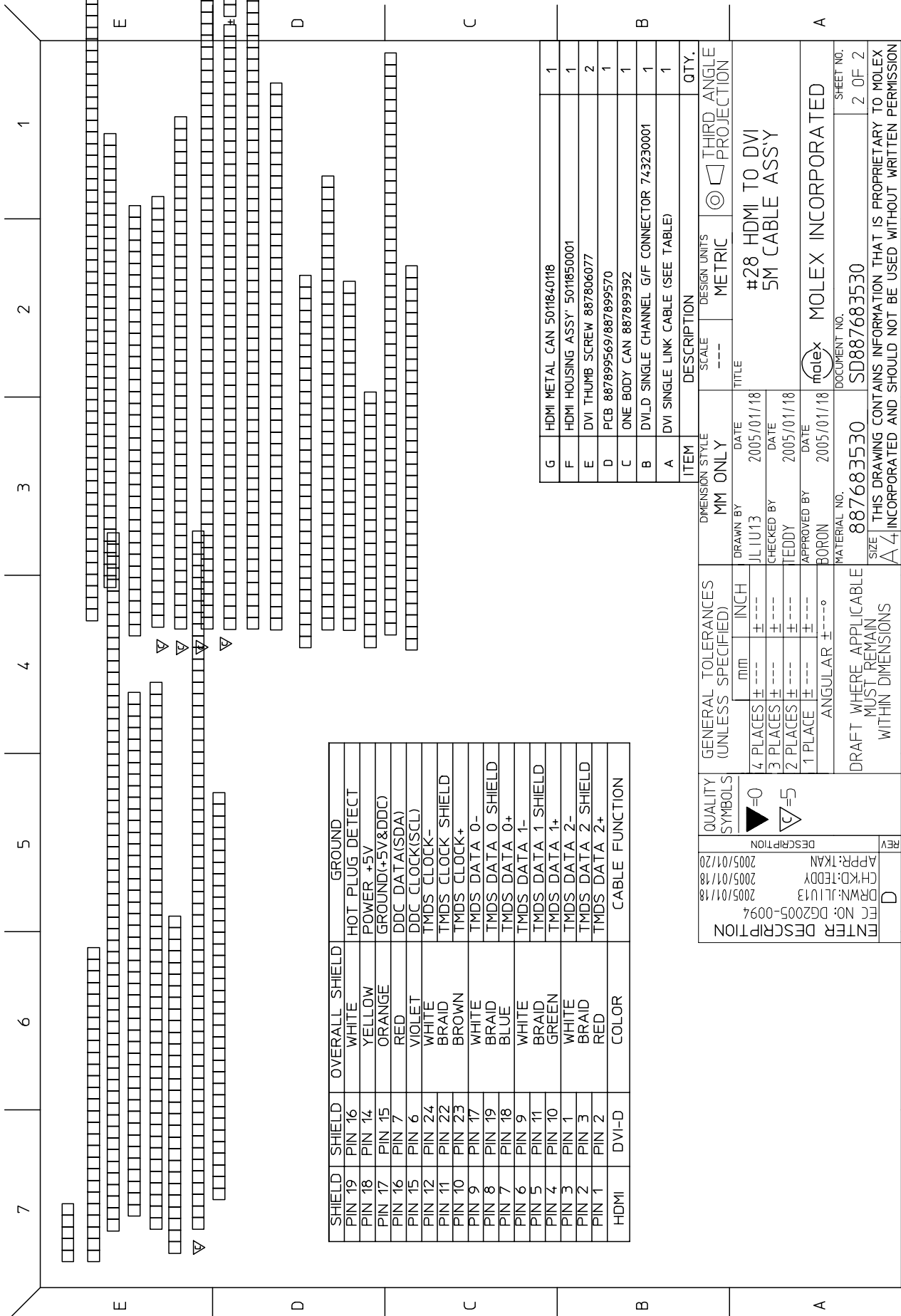
DETAIL B

88768-3530	HDMI TO DVI-D(M) CABLE ASSY,5M	5000 ± 100	BLACK	7.3MM(TMS - AWG#28)	887808276
88768-3520	HDMI TO DVI-D(M) CABLE ASSY,3M	3000 ± 80	BLACK	7.3MM(TMS - AWG#28)	887808276
88768-3510	HDMI TO DVI-D(M) CABLE ASSY,2M	2000 ± 60	BLACK	7.3MM(TMS - AWG#28)	887808276
88768-3500	HDMI TO DVI-D(M) CABLE ASSY,1M	1000 ± 30	BLACK	7.3MM(TMS - AWG#28)	887808276
MX P/N	DESCRIPTION	LENGTH	CABLE COLOR	CABLE OD	CABLE P/N

GENERAL TOLERANCES (UNLESS SPECIFIED)		DIMENSION STYLE		SCALE		DESIGN UNITS	
4 PLACES ±	mm	MM ONLY	---	METRIC	THIRD ANGLE PROJECTION		
3 PLACES ±	INCH	DRAWN BY	DATE	TITLE			
2 PLACES ±		JL IU13	2005/01/18	#28 HDMI TO DVI			
1 PLACE ±		CHECKED BY	DATE	5M CABLE ASSY			
ANGULAR ±		TEDDY	2005/01/18				
		APPROVED BY	DATE				
		BORON	2005/01/18				

QUALITY SYMBOLS		MATERIAL NO.		DOCUMENT NO.		SHEET NO.	
▷=0		887683530	SD887683530	1 OF 2			
∇=0		DRAFT WHERE APPLICABLE MUST REMAIN WITHIN DIMENSIONS					
DRAFT WHERE APPLICABLE MUST REMAIN WITHIN DIMENSIONS							

ENTER DESCRIPTION	DATE	REV
FCC NO: DG2005-0094	2005/01/18	D
DRWN: JLIU13	2005/01/18	
CHKD: TEDDY	2005/01/18	
APPR: TKAN	2005/01/20	



SHIELD	SHIELD	OVERALL SHIELD	GROUND
PIN 19	PIN 16	WHITE	HOT PLUG DETECT
PIN 18	PIN 14	YELLOW	POWER +5V
PIN 17	PIN 15	ORANGE	GROUND(+5V&DDC)
PIN 16	PIN 7	RED	DDC DATA(SDA)
PIN 15	PIN 6	VIOLET	DDC CLOCK(SCL)
PIN 12	PIN 24	WHITE	TMDS CLOCK-
PIN 11	PIN 22	BRAID	TMDS CLOCK SHIELD
PIN 10	PIN 23	BROWN	TMDS CLOCK+
PIN 9	PIN 17	WHITE	TMDS DATA 0-
PIN 8	PIN 19	BRAID	TMDS DATA 0 SHIELD
PIN 7	PIN 18	BLUE	TMDS DATA 0+
PIN 6	PIN 9	WHITE	TMDS DATA 1-
PIN 5	PIN 11	BRAID	TMDS DATA 1 SHIELD
PIN 4	PIN 10	GREEN	TMDS DATA 1+
PIN 3	PIN 1	WHITE	TMDS DATA 2-
PIN 2	PIN 3	BRAID	TMDS DATA 2 SHIELD
PIN 1	PIN 2	RED	TMDS DATA 2+
HDMI	DVI-D	COLOR	CABLE FUNCTION

ITEM	DESCRIPTION	SCALE	DESIGN UNITS	THIRD ANGLE PROJECTION	QTY.
G	HDMI METAL CAN 501840118	---	METRIC		1
F	HDMI HOUSING ASSY' 5011850001	---	METRIC		1
E	DVI THUMB SCREW 887806077	---	METRIC		2
D	PCB 887899569/887899570	---	METRIC		1
C	ONE BODY CAN 887899392	---	METRIC		1
B	DVI-D SINGLE CHANNEL G/F CONNECTOR 743230001	---	METRIC		1
A	DVI SINGLE LINK CABLE (SEE TABLE)	---	METRIC		1

<b>ENTER DESCRIPTION</b> PFC NO: DG2005-0094 DRAWN: JLIU13 CHECKED BY: TEDDY APPROVED BY: BORON DATE: 2005/01/18		<b>GENERAL TOLERANCES (UNLESS SPECIFIED)</b> 4 PLACES ±--- INCH 3 PLACES ±--- INCH 2 PLACES ±--- INCH 1 PLACE ±--- INCH ANGULAR ±---°		<b>QUALITY SYMBOLS</b> = 0 = 5	
<b>REVISION</b> DESCRIPTION APPR: TKAN DATE: 2005/01/18		<b>GENERAL TOLERANCES (UNLESS SPECIFIED)</b> 4 PLACES ±--- INCH 3 PLACES ±--- INCH 2 PLACES ±--- INCH 1 PLACE ±--- INCH ANGULAR ±---°		<b>QUALITY SYMBOLS</b> = 0 = 5	
<b>ENTER DESCRIPTION</b> PFC NO: DG2005-0094 DRAWN: JLIU13 CHECKED BY: TEDDY APPROVED BY: BORON DATE: 2005/01/18		<b>GENERAL TOLERANCES (UNLESS SPECIFIED)</b> 4 PLACES ±--- INCH 3 PLACES ±--- INCH 2 PLACES ±--- INCH 1 PLACE ±--- INCH ANGULAR ±---°		<b>QUALITY SYMBOLS</b> = 0 = 5	
<b>ENTER DESCRIPTION</b> PFC NO: DG2005-0094 DRAWN: JLIU13 CHECKED BY: TEDDY APPROVED BY: BORON DATE: 2005/01/18		<b>GENERAL TOLERANCES (UNLESS SPECIFIED)</b> 4 PLACES ±--- INCH 3 PLACES ±--- INCH 2 PLACES ±--- INCH 1 PLACE ±--- INCH ANGULAR ±---°		<b>QUALITY SYMBOLS</b> = 0 = 5	

tb\_frame\_A4\_P\_ME\_T  
 Rev. D 2004/04/02