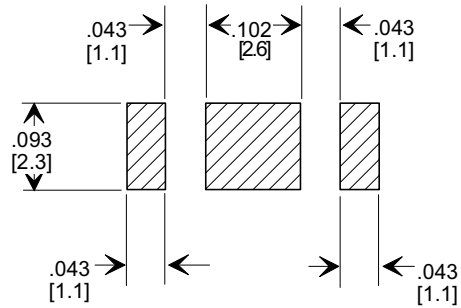
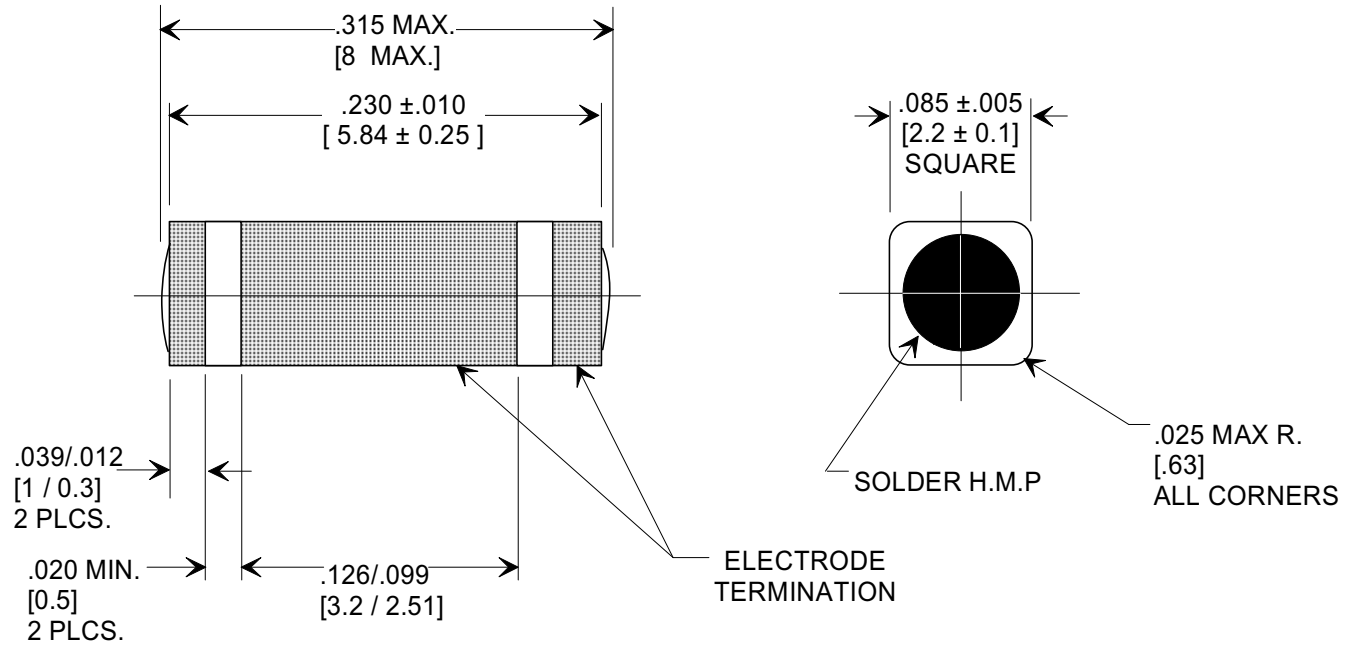
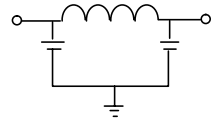


MARKETING SALES DRAWING

DIMENSIONS IN INCHES - DO NOT SCALE THIS DRAWING
 DIMENSIONS IN METRIC []

Electrical Testing
 per Tusonix standard
 test plans and Mil-Std-202
 Test Methods.



1. INDUCTANCE TO BE 0.1 H MINIMUM.
2. PACKAGE: BULK OR BLISTER TAPE TO IEC-286-3 TYPE II AND EIA-481-A.

MOUNTING PATTERN

008	4000 pF	+80% / -20%	100@+85°C	300 VDC	10 A	SOLDER	13	52	70
006	100 pF	+80% / -20%	100	300 VDC	10 A	SOLDER	---	3	16
005	1000 pF	GMV	100	300 VDC	10 A	SOLDER	7	40	65
003	2000 pF	GMV	100	300 VDC	10 A	SOLDER	10	45	70
ITEM	CAP.	TOLERANCE	WVDC +125°C	TEST VOLTAGE	I _{DC}	ELECTRODE TERMINATION	TYPICAL NO LOAD INSERTION LOSS dB AT 25°C PER MIL-STD-220		
							10 MHZ	100 MHZ	1 GHZ

X-2015 Rev-0

REVISION RECORD Original Release C.O. DELETED ITEMS 000, 001, 002 & 007. S.M. 01-16-97 970109-3 DIM: .085 ±.005 WAS .083 ±.004. S.M. 07-1598 19980715-8-03	0	--TOLERANCES-- Unless Otherwise Specified DECIMAL ± .005 [0.1] ANGLES ±	Title SURFACE MOUNT SQUARE STYLE PI FILTER	
	Drawn FG 9-9-94			
	Approved NV 9-9-94			
	TUSONIX TUCSON, ARIZONA		A	4700-STYLE