

# MICRO SWITCH

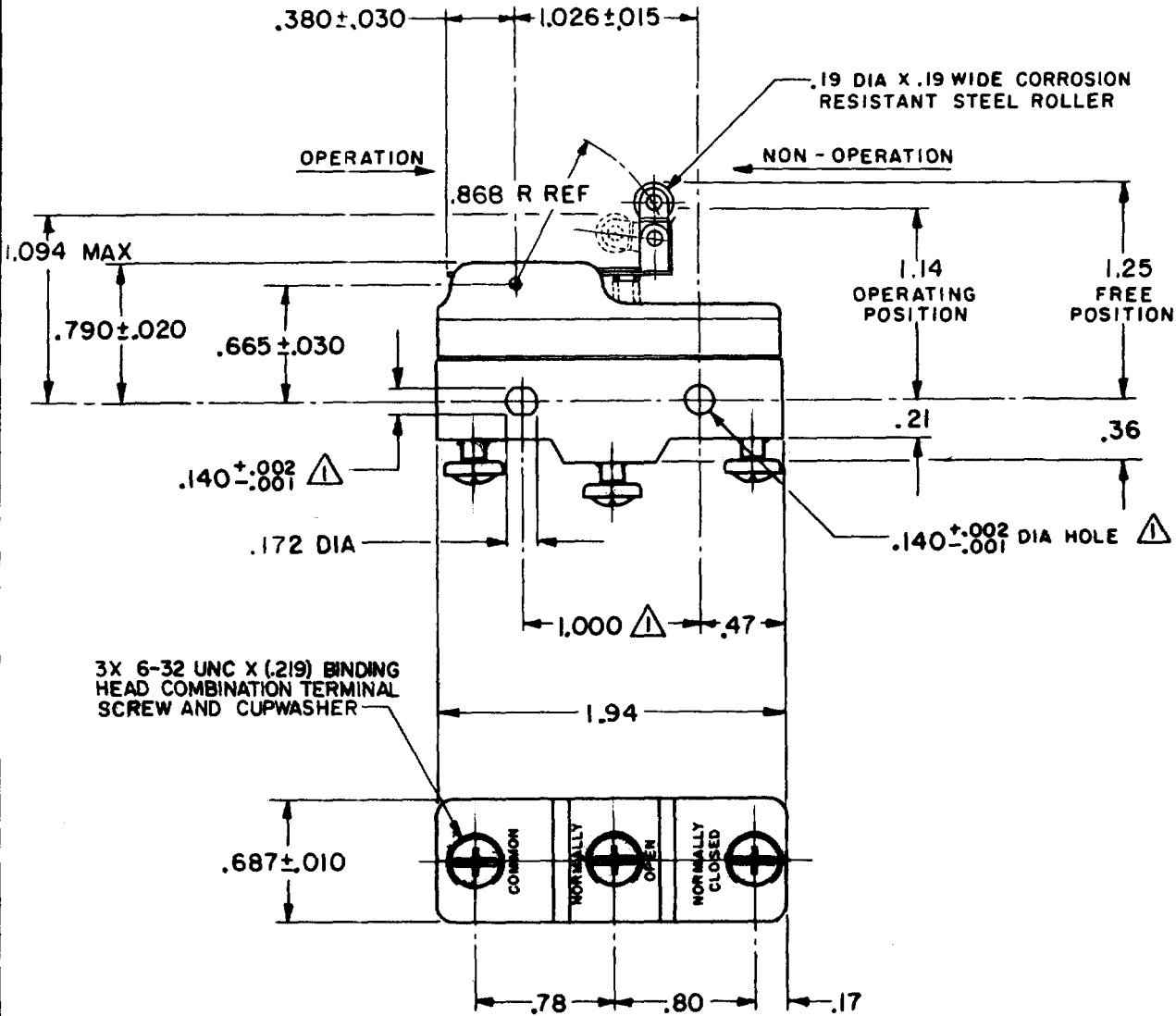
A DIVISION OF MINNEAPOLIS-HONEYWELL REGULATOR COMPANY  
MINNEAPOLIS, MINNESOTA

FED. MFR. CODE 91929

## SWITCH - BASIC

CATALOG LISTING

BZ-2RW825-A2



**NOTE**  
 MOUNTING HOLES WILL ACCEPT PINS OR SCREWS OF .139 MAX DIA ON 1.000 ± .002 CENTERS

THIS DRAWING COVERS A PROPRIETARY ITEM AND IS THE PROPERTY OF MICRO SWITCH, A DIVISION OF MINNEAPOLIS-HONEYWELL REGULATOR CO. THIS DRAWING IS NOT TO BE COPIED OR USED WITHOUT THE APPROVAL OF MICRO SWITCH.

CHARACTERISTICS		ELECTRICAL DATA		SCALE FULL
OPERATING FORCE	8 OZ MAX	CONTACT ARRANGEMENT	S P D T	DO NOT SCALE PRINT
RELEASE FORCE	1 1/2 OZ MIN	UNDERWRITERS' LAB. INC. LISTED RATING -L96- 15A-125, 250, OR 480 VAC 1/2 A-125 VDC; 1/4 A-250 VDC 1/8 HP-125 VAC; 1/4 HP-250 VAC		UNLESS OTHERWISE SPECIFIED DIMENSIONS ARE IN INCHES <b>TOLERANCES ARE:</b> ONE PLACE (.0) ± .030 TWO PLACE (.00) ± .015 THREE PLACE (.000) ± .005 ANGLES ±
DIFFERENTIAL TRAVEL	.015 MAX	-L288-		WEIGHT
OVERTRAVEL	.060 MIN	-L299-	16A 250V ~ T85 5E4	
		-L306-		

M BZ-2RW825-A2

DRAWING NUMBER

ISSUE 8

REVISIONS

A	CO16736
G C H 9 FEB 63	
B	CO27518
L S D 26 JUN 70	
C	CO 73287-E
D H D 5 OCT 93	
D	CO-77589
MAM 29 MAR 94	
E	CO93346
DLT 11 SEP 98	

RELEASE NO. CHECK DRAW E MARG 3 CHECK DRAW 63

FORMTEK  
FO-50378

DRAWN G C H 9 FEB 63