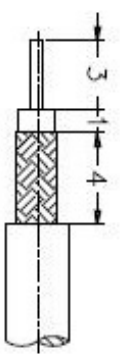


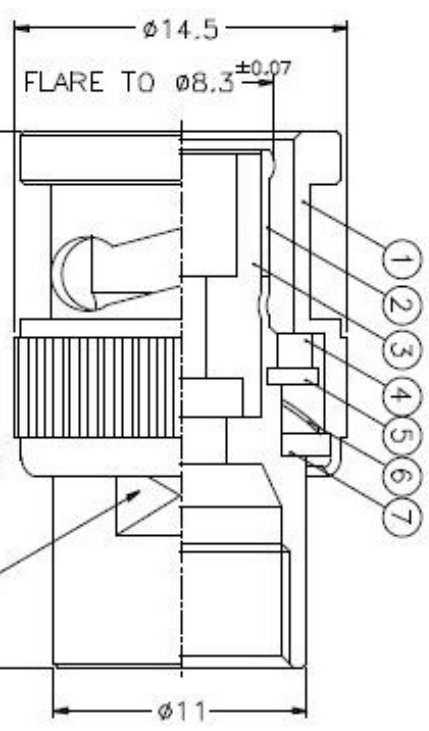
ISS	ZONE	DESCRIPTION\PER REQUEST\DATE
-----	------	------------------------------

REVISIONS

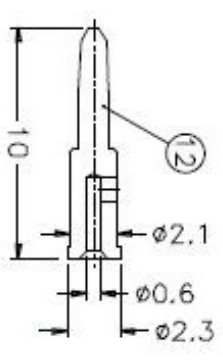
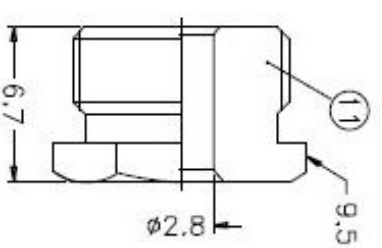
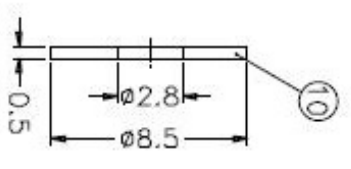
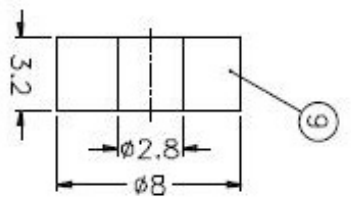
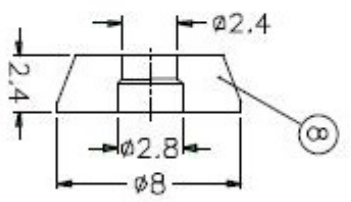
1 2 3 4 5 6 7 8



RECOMMENDED  
CABLE STRIPPING DIM'S



NOTES: FINISH (PLATING THICKNESS IN MICRO-INCHES)  
 1. BRASS PER QQ-B-526  
 2. BRASS PER QQ-B-615  
 3. NICKEL PL. 100 MIN. THICK OVER COPPER STRIKE  
 4. NICKEL PL. 200 MIN. THICK OVER COPPER STRIKE  
 5. GOLD PL. 3 MIN. THICK OVER NICKEL PL. 100 MIN. THICK OVER COPPER STRIKE  
 6. PTFE MIL-P-1948B



1. CRIMPED CONTACT PIN  
HEX CRIMP SIZE .068"

12	CONTACT PIN	NOTE 1	NOTE 5	1	B3000-8-23/06
11	HEX NUT	NOTE 1	NOTE 3	1	B5205-12-95/28
10	WASHER	NOTE 2	NOTE 3	1	WS-85/28X05
9	GASKET	SILICONE	RED	1	GS-8/28X32
8	TOP HAT	NOTE 1	NOTE 3	1	B5205-9-28/24-B
7	WASHER	NOTE 2	NOTE 3	1	WS-128/9X08
6	SPRING	SKS	NOTE 4	1	B50000-6
5	RETAINER RING	NOTE 1	NOTE 3	1	B30000-5
4	GASKET	RUBBER	RED	1	GS-115/8X15
3	INSULATOR	NOTE 6	NATURAL	1	ATC B-3000-ST-30
2	BODY	NOTE 1	NOTE 3	1	B5205-2
1	SHELL	NOTE 1	NOTE 3	1	B50000-1-B

DIMENSIONS ARE IN MILLIMETERS  
UNLESS OTHERWISE SPECIFIED  
TOLERANCES  
0.5-6 = ±0.2  
6-30 = ±0.4  
30-120 = ±0.6  
120-315 = ±1  
315-1000 = ±1.6  
1000-2000 = ±2.4

PART NO. B1141C1-NT3G-5-50  
APPROVED DATE 10-11-01\*  
CHECKED DATE 10-11-01\*  
DRAWN DATE 10-11-01\*

TITLE BNC CLAMP PLUG  
(FOR RG-174/U,188A/U,316/U)  
DRAWING NO. KJ-B1141C1-NT3G-316U-50  
ITEM NO.

**Amphenol**

1 2 3 4 5 6 7 8

A

B

C

D

E

F