

# Lyn teck

## *Sounders*

### ELECTRONIC SOUNDER

**TK 814** (LY02-009-17)

The photograph shows our very popular electronic sounder. The solid state TK 814 has a high sound output, is self contained and fully weatherproof.



### Specification

**TK 814 (hornless)**

### ELECTRICAL

DC Voltage	12v
Typical Current	310mA
Sound Output at 1m	118dB

(All models cased in ABS plastic with metal horn and fixing bracket)

Size (mm)	96H x 101L
Weight (g)	378
Connection	+Red -Black

### PIEZO SOUNDER

**TK 401** (LY03-001-13)

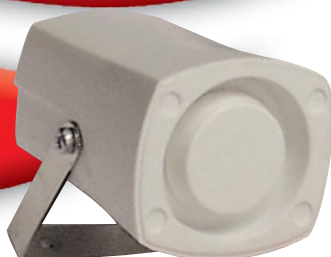
### Specification

**TK 401**

### ELECTRICAL

DC Voltage	12v
Typical Current	150mA
Sound Output at 1m	110dB

Size (mm)	40D x 55L
Frequency	2.0-2.8KHZ



### PIEZO SOUNDER

**TK 403** (LY03-002-14)

### Specification

**TK 403**

### ELECTRICAL

DC Voltage	12v
Typical Current	350mA
Sound Output at 1m	120dB



### DIAMOND SPEAKER

**DIAMII** (LY02-001-09)

Diamond 2 sounder (108dB)

**DIAMII Plus** (LY03-004-16)

Tampered Diamond 2 Sounder



**16OHMD** (LY07-002-30)

16ohm Diamond Speaker

**16OHMD Plus** (LY07-003-31)

Tampered 16ohm Diamond Speaker

**08OHMD** (LY07-001-29)

8ohm Diamond Speaker



# Sound Bombs

SBI LY04-001-17  
 SB1TAMP LY04-003-19  
 SBII LY04-002-18

Introduced into the market as a low current high output range of sounders, sound bombs are ideal for domestic security systems, caravans, boats and small commercial installations.

## Specification

### ELECTRICAL

	SBI	SBII
DC Voltage	12v	12v
Voltage Range	6-15v	6-15v
Current	85mA	190mA
Sound Output at 1m	104dB	111dB
Frequency	1.5-2.8kHz	1.5-2.8kHz
Dimensions	84L x 55W x 32.2 H (mm)	105L x 105W x 45H (mm)
Overall Length	108mm	105mm
Fixing Centres	97.5mm	N/A



# Strobes

## Super Low Profile Xenon Strobes

The new one piece, super low profile xenon strobe has been introduced as part of Lyntek's commitment to continual product development. This unit is designed for use in the 12v security market.



TK 34A	LOW PROFILE XENON STROBE (AMBER)	LY01-005-09
TK 34B	LOW PROFILE XENON STROBE (BLUE)	LY01-006-10
TK 34C	LOW PROFILE XENON STROBE (CLEAR)	LY01-007-11
TK 34R	LOW PROFILE XENON STROBE (RED)	LY01-008-12
TK 31A	EXTRA LOW PROFILE STROBE (AMBER)	LY01-015-11
TK 31B	EXTRA LOW PROFILE STROBE (BLUE)	LY01-016-12
TK 31C	EXTRA LOW PROFILE STROBE (CLEAR)	LY01-017-13
TK 31R	EXTRA LOW PROFILE STROBE (RED)	LY01-018-14

## Specification

### ELECTRICAL

Voltage	12v
Current	160mA
Power Output	1 watt
Flasher	Xenon
Flash Rate per min	100

### MECHANICAL

Acrylic cover	Amber; Red; Clear; Blue
Case	Black ABS plastic
Height	TK34=33mm TK31=27mm
Base diameter	68mm
Flasher lens dia. (mm)	65
Weight	TK34=50 grams TK31=45 grams
Fixing	Surface mounting/Single fixing
Connecting leads	Rear entry



Churchill Way, Nelson, Lancashire BB9 6RT email: [sales@lyntek.co.uk](mailto:sales@lyntek.co.uk)  
[www.lyntek.co.uk](http://www.lyntek.co.uk) Tel: 01282 717 490 Fax: 01282 698 020  
 Technical Support (Mon-Fri 9am-5pm): 0906 711 2329 (calls charged at 50p per minute)  
 Company policy is one of continuous improvement,  
 we reserve the right to change specification without prior notice.

