

**Type**  
**AK 03**  
 100 x 150 x 96 mm



Top end entries:  
 3 x M20  
 bottom:  
 2 x M20 / M25  
 sidewalls, each:  
 2 x M20  
 base, floor: 1 x M20

Description	Order N°	Packing Qty
IP 65 mini distribution box, 3 way units, $U_i=400$ V, PE/N terminals 2 x 4-pole, 6/16 mm <sup>2</sup> , 3 top end elastic entries, with cover and marker strips insulating seals and supplementary double membrane spouts <span style="float: right; border: 1px solid green; border-radius: 50%; padding: 2px 5px; color: white; font-weight: bold;">NEW</span>	735 403 01	12
<i>Recommended accessories:</i>		
IP 68 cable gland with lock-nut		
M20 (seal range 6 - 12 mm)	227 420 01	50
M20 ( " 7 - 14 mm)	227 421 01	30
M25 ( " 7 - 16 mm)	227 425 01	25
<i>IP 66 double membrane spouts</i>		
M20 (seal range 7 - 12 mm)	260 420 01	600 / 50
M25 ( " 9 - 16 mm)	260 425 01	600 / 50

**AK 05**  
 125 x 200 x 122 mm



Top end entries:  
 4 x M20  
 1 x M20 / M25  
 sidewalls, each:  
 2 x M20  
 base, floor: 1 x M20

IP 65 mini distribution box, 5 way units, $U_i=400$ V, PE/N terminals 2 x 5-pole, 6/16 mm <sup>2</sup> , 4 top end elastic entries, with cover and marker strips insulating seals and supplementary double membrane spouts <span style="float: right; border: 1px solid green; border-radius: 50%; padding: 2px 5px; color: white; font-weight: bold;">NEW</span>	735 405 01	9
<i>Recommended accessories:</i>		
IP 68 cable gland with lock-nut		
M20 (seal range 6 - 12 mm)	227 420 01	50
M20 ( " 7 - 14 mm)	227 421 01	30
M25 ( " 7 - 16 mm)	227 425 01	25
<i>IP 66 double membrane spouts</i>		
M20 (seal range 7 - 12 mm)	260 420 01	600 / 50
M25 ( " 9 - 16 mm)	260 425 01	600 / 50

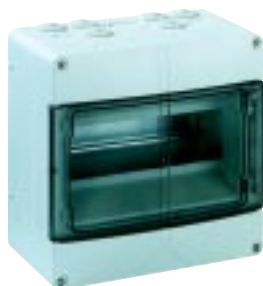
# AK II MINI DISTRIBUTION BOX



## Type

### AK 09

200 x 200 x 122 mm



Top end entries:  
8 x M20  
1 x M25 / M32  
sidewalls, each:  
2 x M20  
base, floor: 2 x M20 / M25

## Description

IP 65 mini distribution box,  
9 way units,  $U_i=400$  V,  
PE/N terminals 2 x 7-pole, 6/16 mm<sup>2</sup>  
6 top end elastic entries,  
with cover and marker strips  
insulating seals and supplementary double membrane spouts

**NEW**

## Order N°

## Packing Qty

735 409 01 6

### Recommended accessories:

IP 68 cable gland with lock-nut

M20 (seal range 6 - 12 mm)

M20 ( " 7 - 14 mm)

M25 ( " 7 - 16 mm)

M32 ( " 11 - 21 mm)

227 420 01 50

227 421 01 30

227 425 01 25

227 432 01 10

IP 66 double membrane spouts

M20 (seal range 7 - 12 mm)

M25 ( " 9 - 16 mm)

M32 ( " 14 - 21 mm)

260 420 01 600 / 50

260 425 01 600 / 50

260 432 01 300 / 25

### AK 12

250 x 200 x 122 mm



Top end entries:  
8 x M20  
2 x M20 / M25  
1 x M32 / M40  
sidewalls, each:  
2 x M20  
base, floor: 2 x M20 / M25

IP 65 mini distribution box,  
12 way units,  $U_i=400$  V,  
PE/N terminals 2 x 12-pole, 6/16 mm<sup>2</sup>  
8 top end elastic entries,  
with cover and marker strips  
insulating seals and supplementary double membrane spouts

**NEW**

735 412 01 4

### Recommended accessories:

NS 35 for EIB

IP 68 cable gland with lock-nut

M20 (seal range 6 - 12 mm)

M20 ( " 7 - 14 mm)

M25 ( " 7 - 16 mm)

M32 ( " 11 - 21 mm)

M40 ( " 16 - 28 mm)

562 935 01 1

227 420 01 50

227 421 01 30

227 425 01 25

227 432 01 10

227 440 01 5

IP 66 double membrane spouts

M20 (seal range 7 - 12 mm)

M25 ( " 9 - 16 mm)

M32 ( " 14 - 21 mm)

260 420 01 600 / 50

260 425 01 600 / 50

260 432 01 300 / 25

2

Type

## AK 14

300 x 300 x 142 mm



Top end entries:  
 17 x M20  
 2 x M20 / M25  
 1 x M32 / M40  
 bottom:  
 15 x M20  
 2 x M20 / M25  
 1 x M32 / M40  
 sidewalls, each:  
 8 x M20  
 2 x M25 / M32

Description

IP 65 distribution box,  
 1 row, 14 way units,  $U_i=400$  V,  
 PE/N terminals 2 x 12-pole, 6/16 mm<sup>2</sup>  
 top end elastic entries,  
 with cable cover, cover and marker strips  
 supplementary double membrane spouts and other  
 accessories

Order N°

Packing Qty

735 414 01

1

*Recommended accessories:*

IP 68 cable gland with lock-nut  
 M20 (seal range 6 - 12 mm)  
 M20 ( " 7 - 14 mm)  
 M25 ( " 7 - 16 mm)  
 M32 ( " 11 - 21 mm)  
 M40 ( " 16 - 28 mm)

227 420 01

50

227 421 01

30

227 425 01

25

227 432 01

10

227 440 01

5

IP 66 double membrane spouts

M20 (seal range 7 - 12 mm)  
 M25 ( " 9 - 16 mm)  
 M32 ( " 14 - 21 mm)

260 420 01

600 / 50

260 425 01

600 / 50

260 432 01

300 / 25

IP 65 combination set

791 001 01

1

## AK 28

450 x 300 x 142 mm



Top end entries:  
 17 x M20  
 2 x M20 / M25  
 1 x M32 / M40  
 bottom:  
 15 x M20  
 2 x M20 / M25  
 1 x M32 / M40  
 sidewalls, each:  
 12 x M20  
 3 x M25 / M32

IP 65 distribution box,  
 2 row, 28 way units,  
 $U_i=400$  V, 150 mm rail distance  
 PE/N terminals 2 x 17-pole, 6/16/25 mm<sup>2</sup>  
 top end elastic entries,  
 with cable cover, cover and marker strips  
 supplementary double membrane spouts and other  
 accessories

735 428 01

1

*Recommended accessories:*

IP 68 cable gland with lock-nut  
 M20 (seal range 6 - 12 mm)  
 M20 ( " 7 - 14 mm)  
 M25 ( " 7 - 16 mm)  
 M32 ( " 11 - 21 mm)  
 M40 ( " 16 - 28 mm)

227 420 01

50

227 421 01

30

227 425 01

25

227 432 01

10

227 440 01

5

IP 66 double membrane spouts

M20 (seal range 7 - 12 mm)  
 M25 ( " 9 - 16 mm)  
 M32 ( " 14 - 21 mm)

260 420 01

600 / 50

260 425 01

600 / 50

260 432 01

300 / 25

IP 65 AK combination set

791 001 01

1

Colour Key
<b>Resistant</b>
<b>Partially Resistant</b>
<b>Not Resistant</b>

735 - 412

AK 12

- Environment
- Weak Alkali
- Strong Alkali
- Alcohol
- Petrol
- Benzene
- Mineral Oil
- Diesel
- Ammonia
- Vegetable Oil
- Animal Oil

Farnell Order Code  
776-7528

IP65    Material: Polystyrene    Op. Temp: -40 to +70 Deg. C

Dimensions: 250 x 200 x 122    Max Temp: 80 Deg. C