

Customer Information Sheet

DRAWING No.: M52-500XX45

SHEET 2 OF 2

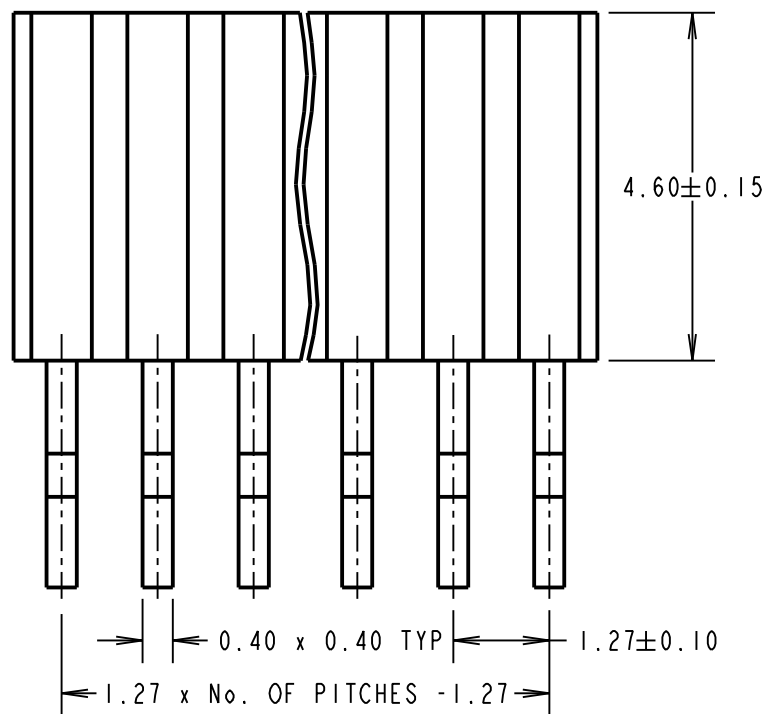
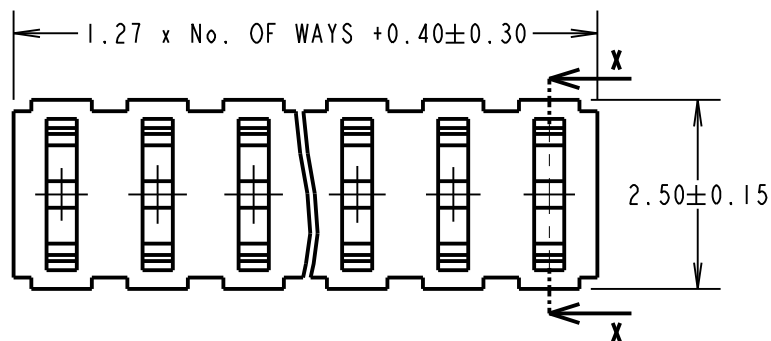
IF IN DOUBT - ASK

(C)

NOT TO SCALE

THIRD ANGLE PROJECTION

ALL DIMENSIONS IN mm



ORDER CODE:

M52-500XX45No. OF WAYS PER ROW
02 TO 40

FINISH: GOLD

SPECIFICATIONS:

MATERIAL:

MOULDING = NYLON 6T UL94V-0, BLACK

CONTACT = PHOSPHOR BRONZE

FINISH:

CONTACT = GOLD OVER NICKEL

ELECTRICAL:

CURRENT RATING = 1A

VOLTAGE PROOF = 500V AC FOR 1 MINUTE

CONTACT RESISTANCE = $20\text{m}\Omega$ MAXINSULATION RESISTANCE = $1000\text{M}\Omega$ MIN

MECHANICAL:

INSERTION FORCES = 2N MAX PER PIN

WITHDRAWAL FORCES = 0.15N MIN PER PIN

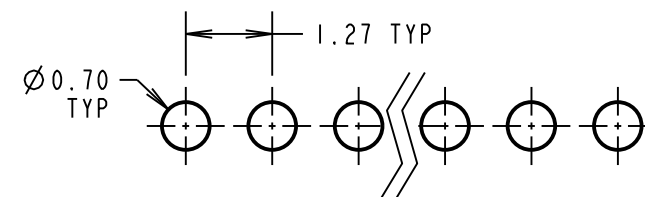
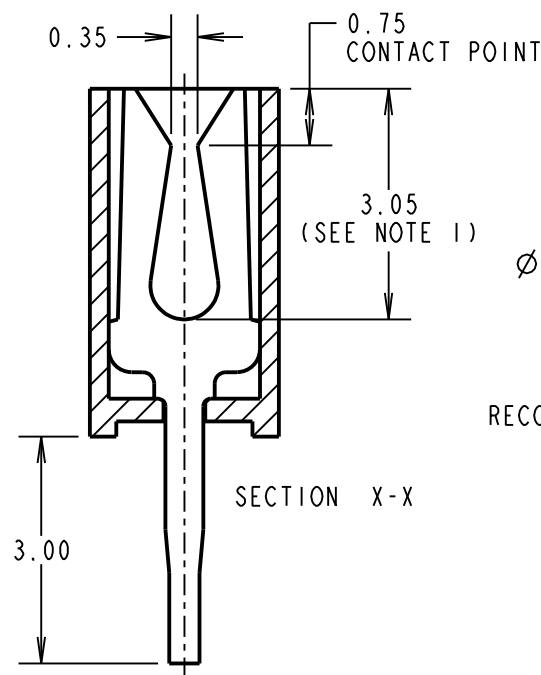
DURABILITY = 300 CYCLES

ENVIRONMENTAL:

OPERATING TEMPERATURE = -40°C TO $+105^{\circ}\text{C}$

PACKING:

02-04 WAY = TRAY, 05-40 WAY = TUBE

RECOMMENDED PCB LAYOUT (PCB TOLERANCE ± 0.05)

NOTES:

1. MAXIMUM MATING PIN LENGTH = 3.05mm .2. ALL TOLERANCES ARE ± 0.25 UNLESS OTHERWISE STATED.**HARWIN**www.harwin.com
technical@harwin.comTHIS DRAWING AND ANY
INFORMATION OR DESCRIPTIVE
MATTER SET OUT HEREON ARE
CONFIDENTIAL AND COPYRIGHT
PROPERTY OF THE HARWIN
GROUP AND MUST NOT BE
DISCLOSED, LOANED, COPIED
OR USED FOR MANUFACTURING,
TENDERING OR FOR ANY
OTHER PURPOSE WITHOUT
THEIR WRITTEN PERMISSION.

TOLERANCES

X = $\pm 1\text{mm}$
X.X = $\pm 0.25\text{mm}$
X.XX = $\pm 0.10\text{mm}$
X.XXX = $\pm 0.01\text{mm}$ ANGLES = $\pm 5^{\circ}$

UNLESS STATED

MATERIAL:

SEE ABOVE

FINISH: SEE ABOVE

S/AREA:

 mm^2

TITLE:

1.27mm PITCH SIL
VERTICAL PC TAIL SOCKET ASSY

DRAWING NUMBER:

M52-500XX45SHT
2 OF 2

SB	10	15.03.12	11659
NAME	ISS.	DATE	C/NOTE
APPROVED:		S.BENNETT	
CHECKED:		M.PLESTED	
DRAWN:		J. ENRIGHT	
CUSTOMER REF.:			
ASSEMBLY DRG:			