

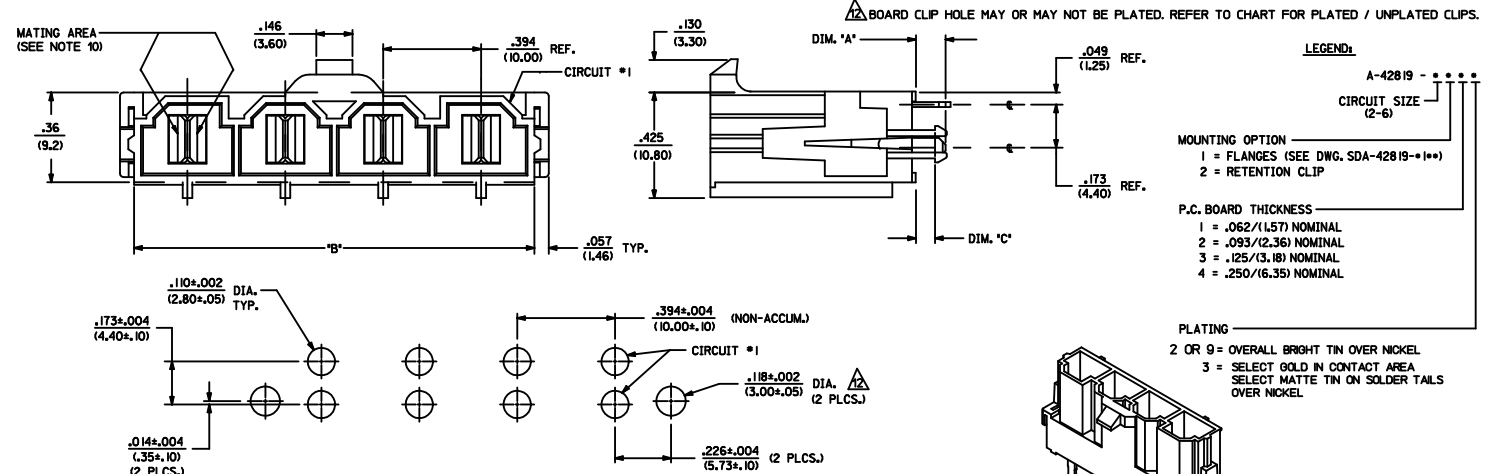
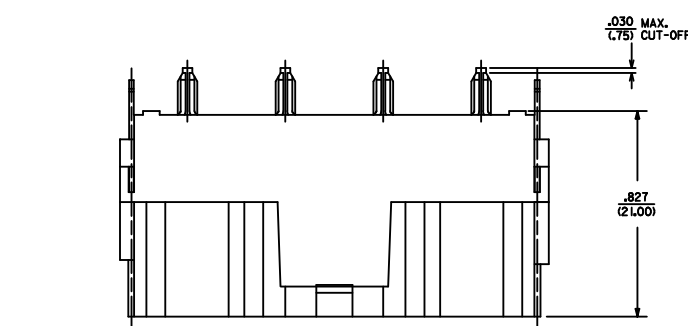
ITEM NUMBER	CKT. SIZE	DIM. 'A'	DIM. 'B'	DIM. 'C'	TERMINAL PLATING	CLIP PLATING
42819-2212	2	.138/(3.50)	.823/(20.90)	.071/(1.80)		
42819-2222	2	.201/(5.10)	.823/(20.90)	.102/(2.60)		
42819-2229	2	.201/(5.10)	.823/(20.90)	.102/(2.60)		
42819-2232	2	.201/(5.10)	.823/(20.90)	.134/(3.40)		
42819-2242	2	.327/(8.30)	.823/(20.90)	.259/(6.58)		
42819-3212	3	.138/(3.50)	1.216/(30.90)	.071/(1.80)		
42819-3222	3	.201/(5.10)	1.216/(30.90)	.102/(2.60)		
42819-3232	3	.201/(5.10)	1.216/(30.90)	.134/(3.40)		
42819-3242	3	.327/(8.30)	1.216/(30.90)	.259/(6.58)		
42819-4212	4	.138/(3.50)	1.610/(40.90)	.071/(1.80)		
42819-4222	4	.201/(5.10)	1.610/(40.90)	.102/(2.60)		
42819-4232	4	.201/(5.10)	1.610/(40.90)	.134/(3.40)		
42819-4242	4	.327/(8.30)	1.610/(40.90)	.259/(6.58)		
42819-5212	5	.138/(3.50)	2.004/(50.90)	.071/(1.80)		
42819-5222	5	.201/(5.10)	2.004/(50.90)	.102/(2.60)		
42819-5232	5	.201/(5.10)	2.004/(50.90)	.134/(3.40)		
42819-5242	5	.327/(8.30)	2.004/(50.90)	.259/(6.58)		
42819-6212	6	.138/(3.50)	2.398/(60.90)	.071/(1.80)		
42819-6222	6	.201/(5.10)	2.398/(60.90)	.102/(2.60)		
42819-6232	6	.201/(5.10)	2.398/(60.90)	.134/(3.40)		
42819-6242	6	.327/(8.30)	2.398/(60.90)	.259/(6.58)		
42819-2213	2	.138/(3.50)	.823/(20.90)	.071/(1.80)		
42819-2223	2	.201/(5.10)	.823/(20.90)	.102/(2.60)		
42819-2233	2	.201/(5.10)	.823/(20.90)	.134/(3.40)		
42819-2243	2	.327/(8.30)	.823/(20.90)	.259/(6.58)		
42819-3213	3	.138/(3.50)	1.216/(30.90)	.071/(1.80)		
42819-3223	3	.201/(5.10)	1.216/(30.90)	.102/(2.60)		
42819-3233	3	.201/(5.10)	1.216/(30.90)	.134/(3.40)		
42819-3243	3	.327/(8.30)	1.216/(30.90)	.259/(6.58)		
42819-4213	4	.138/(3.50)	1.610/(40.90)	.071/(1.80)		
42819-4223	4	.201/(5.10)	1.610/(40.90)	.102/(2.60)		
42819-4233	4	.201/(5.10)	1.610/(40.90)	.134/(3.40)		
42819-4243	4	.327/(8.30)	1.610/(40.90)	.259/(6.58)		
42819-5213	5	.138/(3.50)	2.004/(50.90)	.071/(1.80)		
42819-5223	5	.201/(5.10)	2.004/(50.90)	.102/(2.60)		
42819-5233	5	.201/(5.10)	2.004/(50.90)	.134/(3.40)		
42819-5243	5	.327/(8.30)	2.004/(50.90)	.259/(6.58)		
42819-6213	6	.138/(3.50)	2.398/(60.90)	.071/(1.80)		
42819-6223	6	.201/(5.10)	2.398/(60.90)	.102/(2.60)		
42819-6233	6	.201/(5.10)	2.398/(60.90)	.134/(3.40)		
42819-6243	6	.327/(8.30)	2.398/(60.90)	.259/(6.58)		

OVERALL BRIGHT TIN

NONE

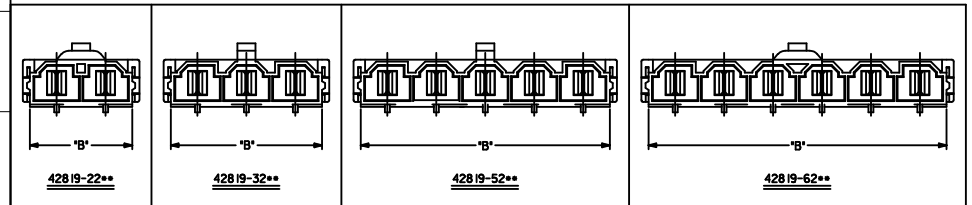
SELECT GOLD IN CONTACT AREA

SELECT MATTE TIN ON SOLDER TAILS



RECOMMENDED P.C. BOARD PLATED-THRU HOLE LAYOUT
(4 CKT. SHOWN FOR REF.)

HEADER WITH VERTICAL TERMINAL & CLIP
ISO VIEW



REVISE NOTE NO. 8 EC NO. UCP2011-3168 DRAWN: AELHAG 2011/04/13 CHECKED: JBELL 2011/04/14 APPROVED: MTH 2011/08/03 DESCRIPTION:	QUALITY SYMBOLS ▽=0 ▽=0	GENERAL TOLERANCES (UNLESS SPECIFIED)		DIMENSION STYLE IN/MM	SCALE 4:1	DESIGN UNITS METRIC	THIRD ANGLE PROJECTION
		4 PLACES ±.--- ±.--- 3 PLACES ±.--- ±.--- 2 PLACES ±0.25 ±.--- 1 PLACE ±0.40 ±.--- ANGULAR ±1/2°		DRAWN BY: AELHAG DATE: 2011/04/13	TITLE: VERTICAL HEADER ASSEMBLY MINIFIT SR. SERIES	MOLEX INCORPORATED	
DRAFT WHERE APPLICABLE MUST REMAIN WITHIN DIMENSIONS		MATERIAL NO. SEE CHART		DOCUMENT NO. SDA-42819-0002		INCORPORATED AND SHOULD NOT BE USED WITHOUT WRITTEN PERMISSION	