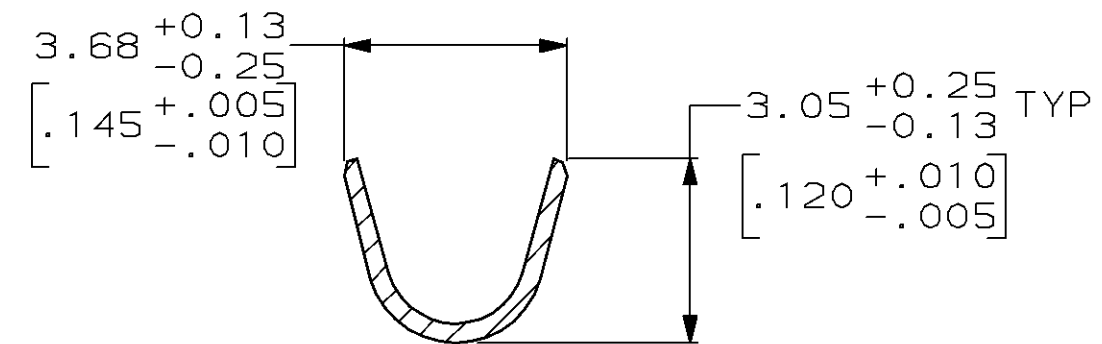
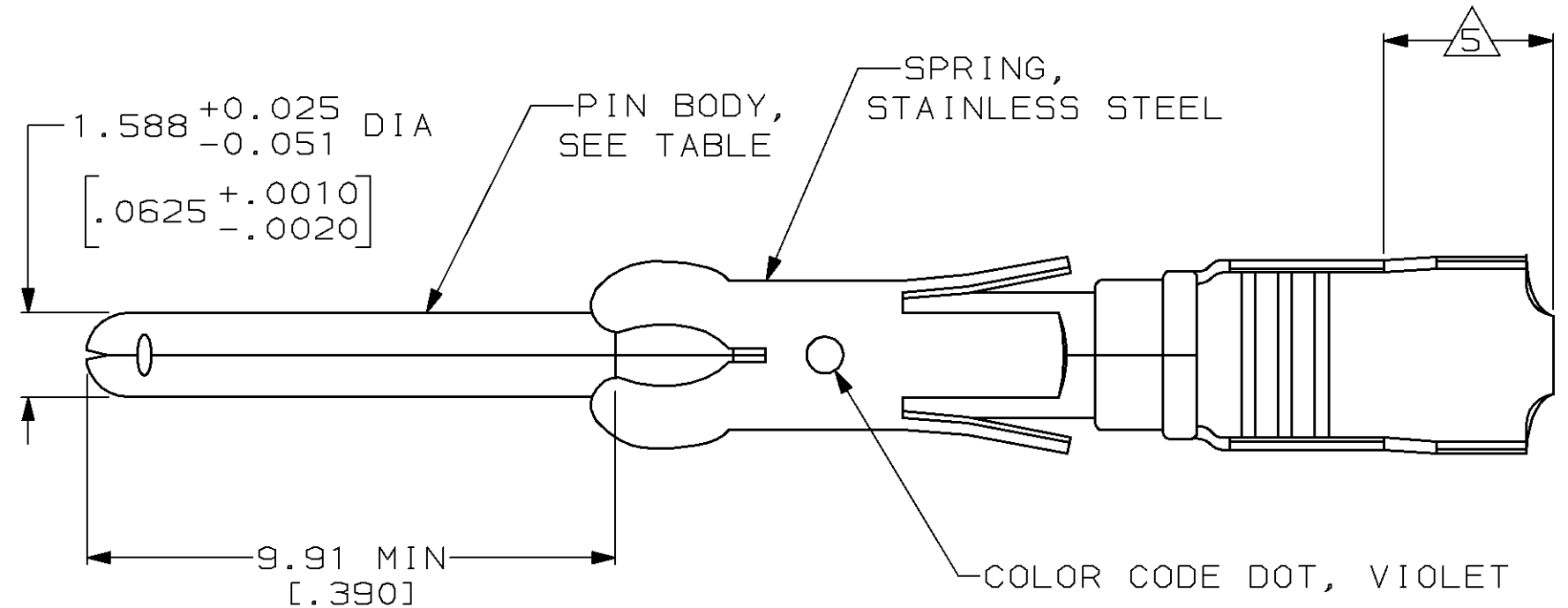
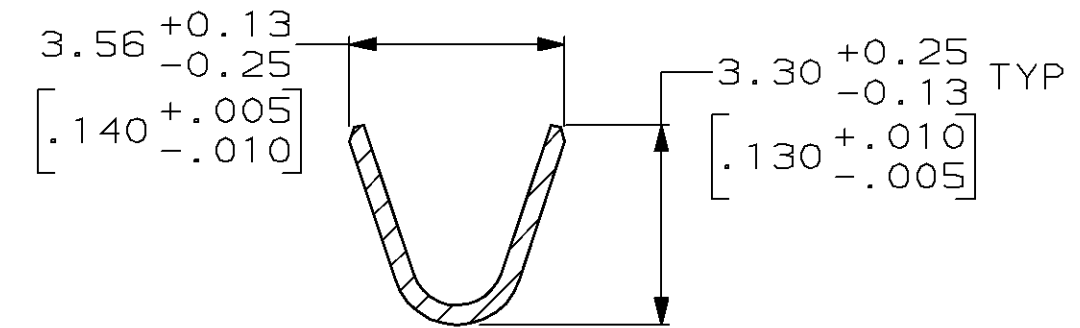
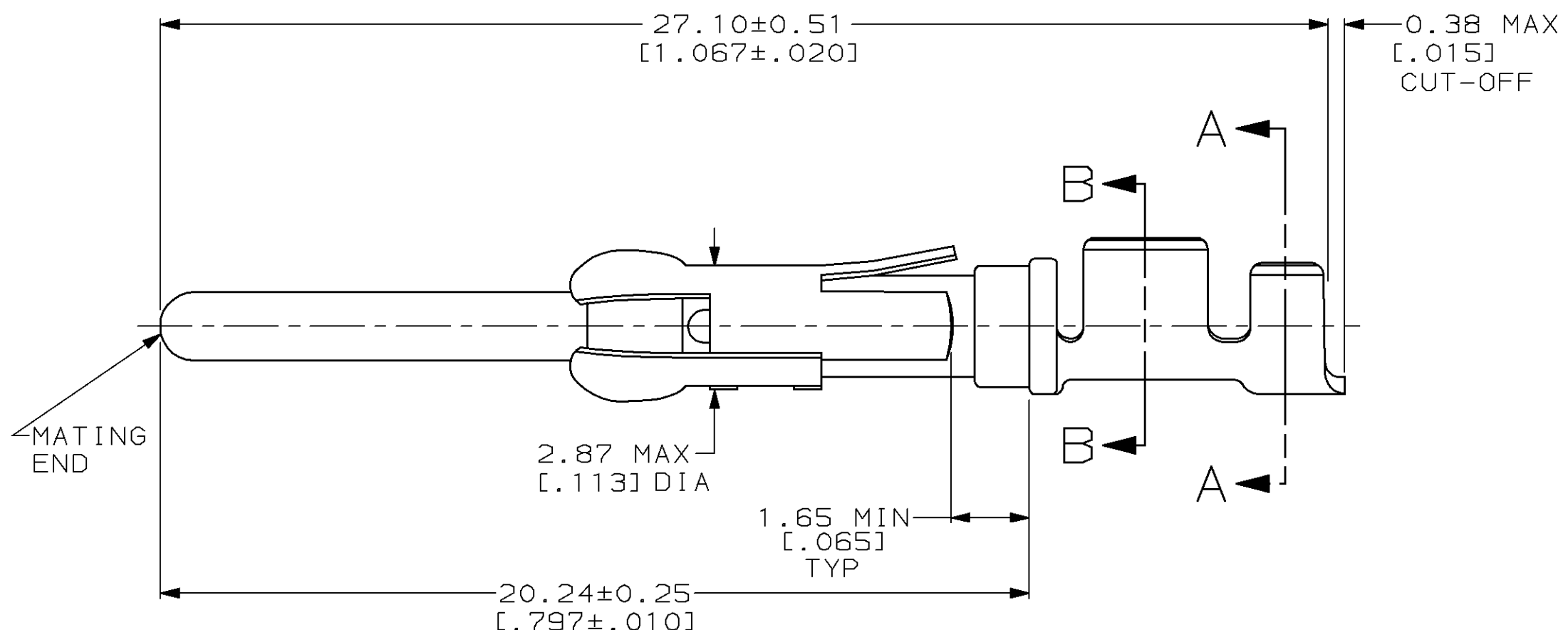


LOC	DIST	P	F	ZONE	LTR	DESCRIPTION	DATE	APPD
FT	47					RELEASED AND ADDED -9 PER NPR 3597	06/03/92	-
						ADDED 1-0 AND 1-1 PER NPR 4692	04/15/93	GS
						OBS -7, -8, -9 PER EC 0200-0439-93	05/21/93	GS
						REV PER EC 0320-133-97	7-23-97	PB



SECTION A-A



SECTION B-B

- ① 0.76µm [.000030] MIN GOLD PER MIL-G-45204 ON MATING END FOR A LENGTH OF 5.08 [.200] MIN WITH GOLD FLASH ON THE REMAINDER, OVER 1.27µm [.000050] MIN NICKEL PER QQ-N-290.
- ② 0.76µm [.000030] MIN GOLD PER MIL-G-45204 IN MATING END FOR A LENGTH OF 5.08 [.200] MIN WITH A UNIFORM GRADIENT TO 0.25µm [.000010] MIN GOLD PER MIL-G-45204 ON THE REMAINDER, OVER 1.27µm [.000050] MIN NICKEL PER QQ-N-290.
- ③ 0.38µm [.000015] MIN GOLD PER MIL-G-45204 ON MATING END FOR A LENGTH OF 5.08 [.200] MIN WITH GOLD FLASH ON THE REMAINDER OVER 1.27µm [.000050] MIN NICKEL PER QQ-N-290.
- ④ 1.27µm [.000050] MIN TIN-LEAD PER MIL-T-10727 OVER 1.27µm [.000050] MIN NICKEL PER QQ-N-290.
- ⑤ GOLD PLATING NOT REQUIRED IN THIS AREA.
- 6. WIRE RANGE 18-14 AWG.
- 7. INSULATION RANGE 2.03 [.080] - 2.54 [.100] DIA.
- ⑧ 0.38µm [.000015] MIN GOLD PER MIL-G-45204 ON MATING END FOR A LENGTH OF 5.08 [.200] MIN, 1.27µm [.000050] MIN TIN-LEAD PER MIL-T-10727 FOR A LENGTH OF 5.69 [.224] MIN ON OPPOSITE END, BOTH OVER 1.27µm [.000050] MIN NICKEL PER QQ-N-290 ON ENTIRE CONTACT.

	SMALL PACK	①	BRASS	66359-4	1-66361-1
	SMALL PACK	④	BRASS	66359-2	1-66361-0
OBSOLETE	STANDARD	⑧	BRASS	1-66359-3	66361-9
OBSOLETE	STANDARD	①	PHOSPHOR BRONZE	1-66359-2	66361-8
OBSOLETE	STANDARD	④	PHOSPHOR BRONZE	1-66359-1	66361-7
	STANDARD	①	BRASS	66359-4	66361-4
	STANDARD	③	BRASS	66359-3	66361-3
	STANDARD	④	BRASS	66359-2	66361-2
	STANDARD	②	BRASS	66359-1	66361-1

PACKAGING TYPE	PIN BODY FINISH	PIN BODY MATERIAL	STRIP P/N REF	PART NO
DO NOT SCALE PRINT. UNLESS SPECIFIED DIMENSIONS IN mm [INCHES] TOLERANCES ON:	DR 06/03/92 L.SIPE			
2 PLC DEC ± 0.13 [.005]	CHK 6-11-92 W.LENKER			
3 PLC DEC ± -	APPD 7-8-92 G.STEINHAEUER			
ANGLES ± -	APPD 7-8-92 G.STEINHAEUER			
MATERIAL	PRODUCT SPEC			
SEE CALLOUTS	-			
FINISH	APPLICATION SPEC			
SEE TABLE	-			
WEIGHT	-			

AMP AMP Incorporated
 Harrisburg, PA 17105-3608

PIN ASSEMBLY,
 LOOSE PIECE, TYPE III+

NAME	SIZE	CAGE CODE	DRAWING NO
	C	00779	C=66361
SCALE	8:1	SHEET	1 OF 1

THIS DRAWING IS A CONTROLLED DOCUMENT FOR AMP INCORPORATED. IT IS SUBJECT TO CHANGE AND THE CONTROLLING ENGINEERING ORGANIZATION SHOULD BE CONTACTED FOR THE LATEST REVISION.