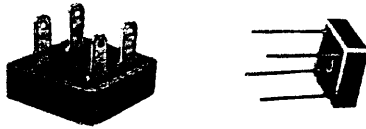


SB6, SBT6 SERIES

SINGLE PHASE 6.0 AMPS. SILICON BRIDGE RECTIFIERS



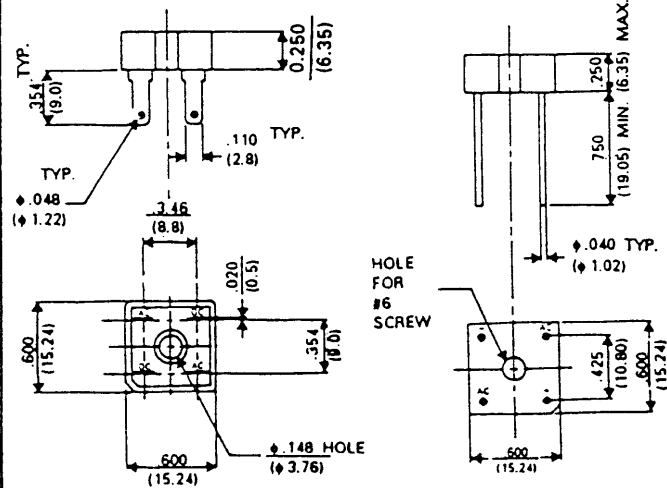
VOLTAGE RANGE
50 to 1000 Volts
CURRENT
6.0 Amperes

FEATURES

- * UL Recognized File # E-96005
- * Surge overload rating 200 amperes peak
- * Low forward voltage drop
- * High temperature soldering guaranteed: 250°C/10 seconds/.375", (9.5mm) lead lengths at 5 lbs., (2.3kg) tension
- * Small size, simple installation
- * Leads solderable per MIL-STD-202 Method 208

SBT-6

SB-6



Dimensions in inches and (millimeters)

MAXIMUM RATINGS AND ELECTRICAL CHARACTERISTICS

Rating at 25°C ambient temperature unless otherwise specified.
Single phase, half wave, 60 Hz, resistive or inductive load.
For capacitive load, derate current by 20%

TYPE NUMBER	SB601	SB602	SB603	SB604	SB605	SB606	SB607	UNITS
	SBT601	SBT602	SBT603	SBT604	SBT605	SBT606	SBT607	
Maximum Recurrent Peak Reverse Voltage	50	100	200	400	600	800	1000	V
Maximum RMS Bridge Input Voltage	35	70	140	280	420	560	700	V
Maximum DC Blocking Voltage	50	100	200	400	600	800	1000	V
Maximum Average Forward Rectified Current @ T _A =50°C	6.0							A
Peak Forward Surge Current, 8.3 ms single half sine-wave superimposed on rated load (JEDEC method)	200							A
Maximum Forward Voltage Drop per element @ 3.0A	1.1							V
Maximum Reverse Current at Rated @ T _A =25°C D.C. Blocking Voltage per element @ T _A =100°C	10 500							μA μA
Operating Temperature Range T _j	-55 to +125							°C
Storage Temperature Range T _{STG}	-55 to +150							°C

NOTES: * Special Silicon Bridge Rectifier are also Available.

RATINGS AND CHARACTERISTIC CURVES (SB₆₀₁ THRU SB₆₀₇)

FIG. 1-MAXIMUM NON-REPETITIVE FORWARD SURGE CURRENT

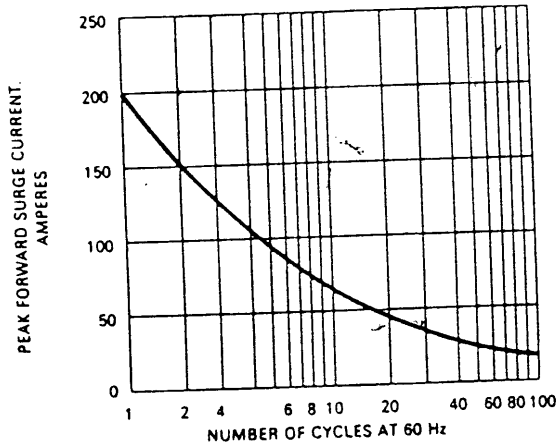


FIG. 2-TYPICAL FORWARD CURRENT DERATING CURVE

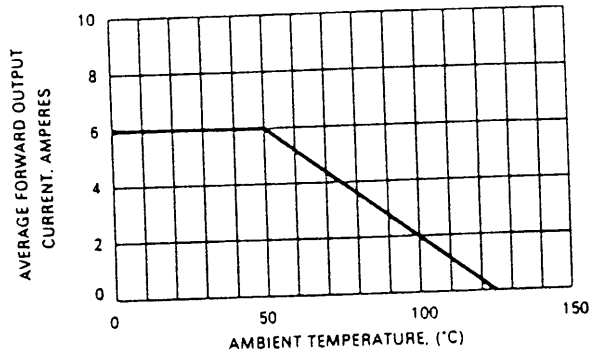


FIG. 3-TYPICAL FORWARD CHARACTERISTICS

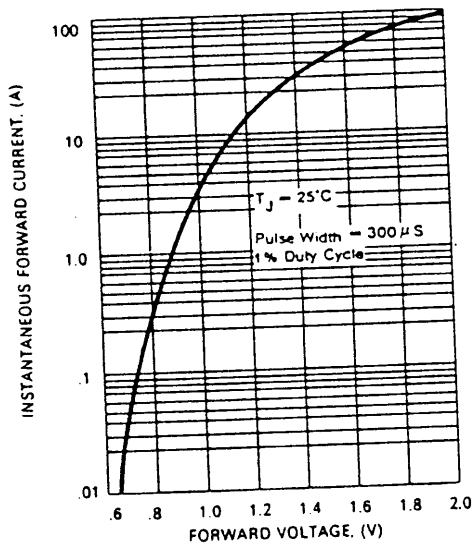


FIG. 4-TYPICAL REVERSE CHARACTERISTICS

