

NOTES:

1. PRESS FIT LEGS 0.120" LONG-
 0.062 [1.57] MINIMUM PCB THICKNESS FOR SINGLE SIDED USE.
 0.118 [3.00] MINIMUM PCB THICKNESS FOR BELLY TO BELLY USE.

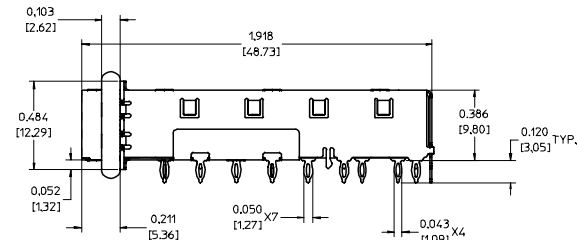
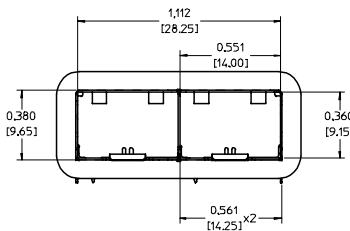
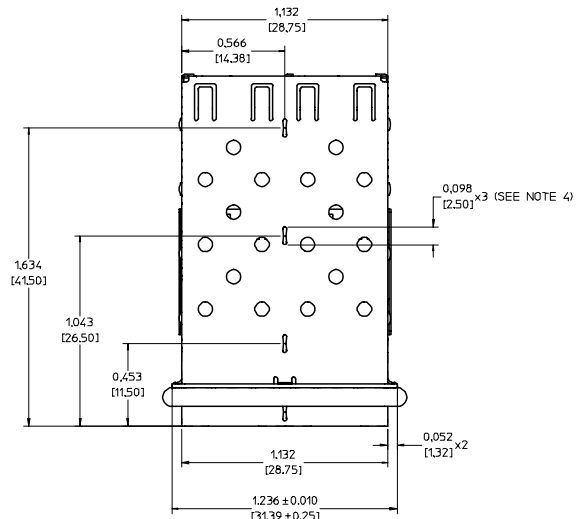
2. MATERIAL: COPPER ALLOY
 PLATING: NONE

NOTE: A NICKEL PLATED VERSION OF THIS ASSEMBLY IS AVAILABLE.
 REFER TO DOCUMENT SD-74722-004

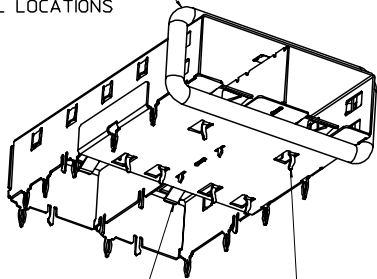
3. REFERENCE DOCUMENTS:
 PRODUCT SPECIFICATION: PS-74728-000
 COSMETIC SPECIFICATIONS: WI-HP-2774 AND WI-HPA-7-0093
 TEST SUMMARY: TS-74722-0001.

4. MATES WITH SERIES 74727. LIGHT PIPE COVER ASSEMBLY.

5. THIS PART MEETS THE RESTRICTION OF HAZARDOUS SUBSTANCES IN
 ELECTRICAL AND ELECTRONIC EQUIPMENT (ROHS) DIRECTIVE (2002/95/EC).



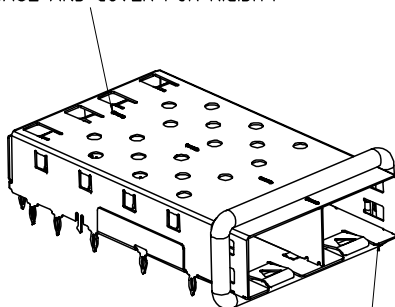
360° ELASTOMER EMI GASKET
 COMPLIES WITH (SFP) MSA
 BOARD AND BEZEL LOCATIONS



EMI FINGERS
 CONTACT ADAPTER

6 UNDER BELLY EMI PINS

INNER WALL TABS ARE COINED
 OVER BASE AND COVER FOR RIGIDITY

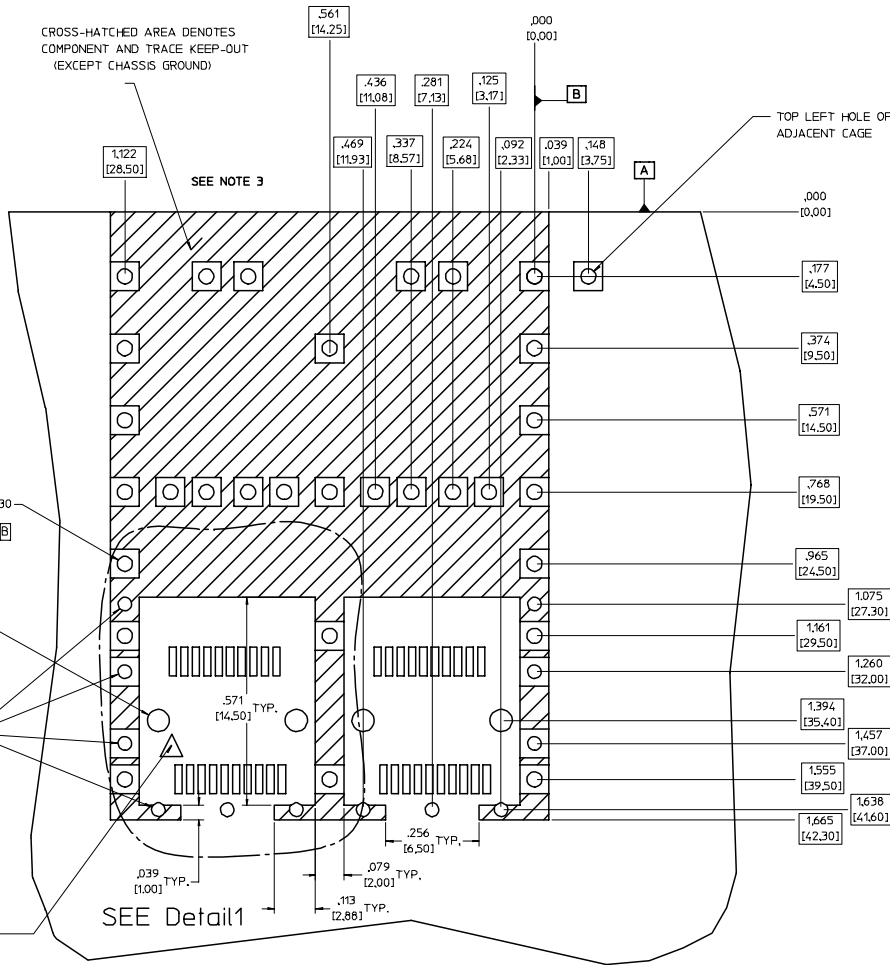


DIMENSIONS OF EACH INNER CAGE DESIGNED
 TO FUNCTION WITH SMALL FORM-FACTOR
 PLUGGABLE (SFP) TRANSCEIVER

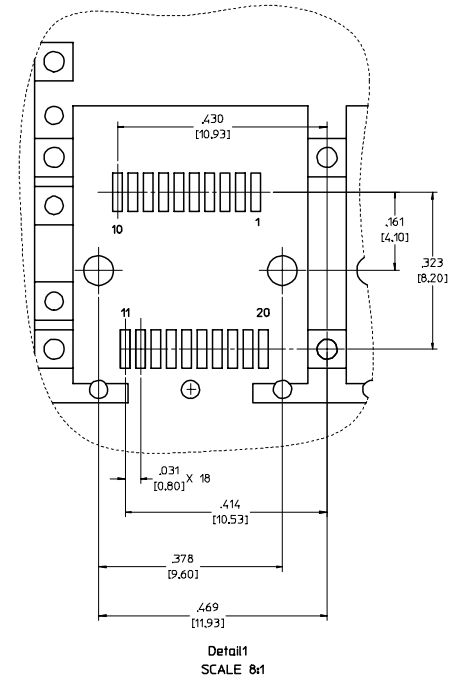
ENTER DESCRIPTION EC NO: UST2006-0073 DRAWN BY: DRWANKS/IMONSO 2006/01/17 CHECKED BY: CHFK/BRUSSELL 2006/01/26 APPR: BRUSSELL 2006/01/25	QUALITY SYMBOLS	GENERAL TOLERANCES (UNLESS SPECIFIED)	DIMENSION STYLE	SCALE	DESIGN UNITS	THIRD ANGLE PROJECTION
	▽=0 ▽=0	mm INCH 4 PLACES ± --- ± --- 3 PLACES ± --- ± .005 2 PLACES ± 0.13 ± .010 1 PLACE ± 0.25 ± --- ANGULAR ± 1 °	IN/MM DRAWN BY: DATE KS IMONSO 2003/09/25 CHECKED BY: DATE BRUSSELL 2003/10/27 APPROVED BY: DATE BRUSSELL 2003/10/27	3:1	METRIC	TITLE 1X2 SFP GANGED CAGE ASSEMBLY, PRESS FIT
			MATERIAL NO: 747220001			MOLEX INCORPORATED DOCUMENT NO: SD-74722-001
			DRAFT WHERE APPLICABLE MUST REMAIN WITHIN DIMENSIONS	SIZE D		

PCB LAYOUT FOR BELLY TO BELLY MOUNTING

CROSS-HATCHED AREA DENOTES
COMPONENT AND TRACE KEEP-OUT
(EXCEPT CHASSIS GROUND)



HOST CONNECTOR DETAIL



SEE NOTE 3

SEE Detail1

THIS AREA DENOTES
COMPONENT KEEP-OUT
(TRACES ALLOWED)

NOTES:

- PADS AND VIAS GO TO CHASSIS GROUND, (34 PLACES).
RECOMMENDED PADS TO BE 2mm SQUARE.
- PLATING OPTIONAL FOR THROUGH HOLES (8 PLACES)
- RECOMMENDED PLATING INCLUDES HASL, IMMERSION (GOLD, SILVER, OR TIN), AND OSP.
- HOLE PATTERN REPEATS FOR EACH PORT.
SPACING BETWEEN PORTS IS 0.561 [14.25]
- CONNECTOR PAD LAYOUT PER SFP MSA. WILL ACCOMMODATE MOLEX
CONNECTOR SERIES 74441 OR EQUIVALENT.

ENTER DESCRIPTION EC NO: UST2006-0073 DRAWN BY: DRWNS/IMONSO 2006/01/17 CHKD: BRUSSELL 2006/01/28 APPR: BRUSSELL 2006/01/28	QUALITY SYMBOLS ▽=0 ▽=0	GENERAL TOLERANCES (UNLESS SPECIFIED)		DIMENSION STYLE		SCALE 6:1	DESIGN UNITS METRIC	THIRD ANGLE PROJECTION
		mm	INCH	IN/MM	DATE			
DESCRIPTION	4 PLACES ±	±.005	±.005	DRAWN BY	DATE	TITLE 1X2 SFP GANGED CAGE ASSEMBLY, PRESS FIT	MOLEX INCORPORATED	DOCUMENT NO. SD-74722-001
	3 PLACES ±	±.005	±.005	CHECKED BY	DATE			
	2 PLACES ±	±0.13	±.010	APPROVED BY	DATE			
	1 PLACE ±	±0.25	±.010	DATE	2003/10/27			
	ANGULAR	± 1 °	± 1 °	MATERIAL NO.	747220001			
DRAFT WHERE APPLICABLE MUST REMAIN WITHIN DIMENSIONS		SIZE D		THIS DRAWING CONTAINS INFORMATION THAT IS PROPRIETARY TO MOLEX INCORPORATED AND SHOULD NOT BE USED WITHOUT WRITTEN PERMISSION		SHEET NO. 2 OF 5		

PCB LAYOUT FOR SINGLE SIDE MOUNTING

CROSS-HATCHED AREA DENOTES
COMPONENT AND TRACE KEEP-OUT
(EXCEPT CHASSIS GROUND)

SEE NOTE 3

TOP LEFT HOLE OF
ADJACENT CAGE

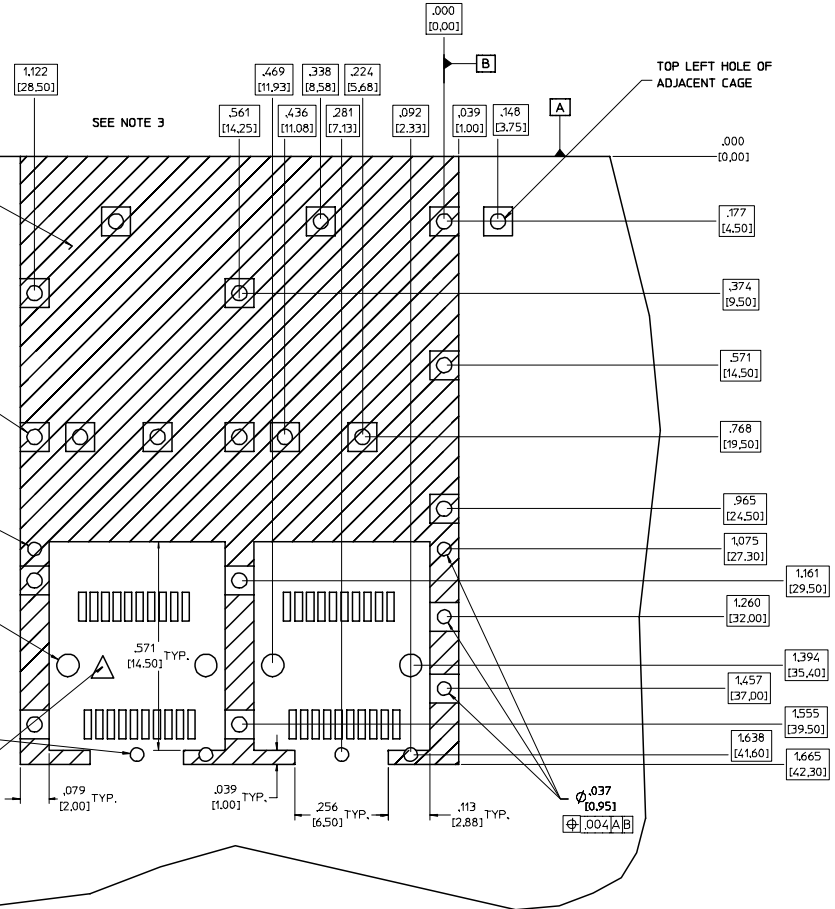
$\phi .041 \times 17$
[1.05] [17]
 $\phi .004 [A/B]$

$\phi .037$
[0.951]
 $\phi .004 [A/B]$

$\phi .061 \times 8$
[1.55] [8]
 $\phi .004 [A/B]$

$\phi .037 \times 4$
[0.951] [4]
 $\phi .004 [A/B]$

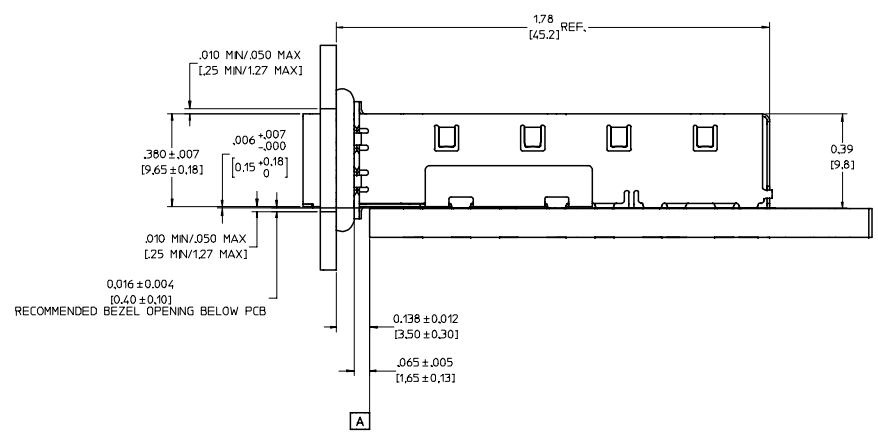
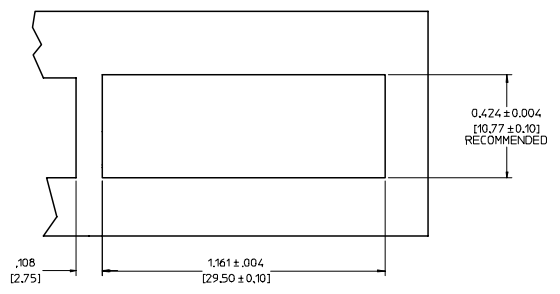
THIS AREA DENOTES
COMPONENT KEEP-OUT
(TRACES ALLOWED)



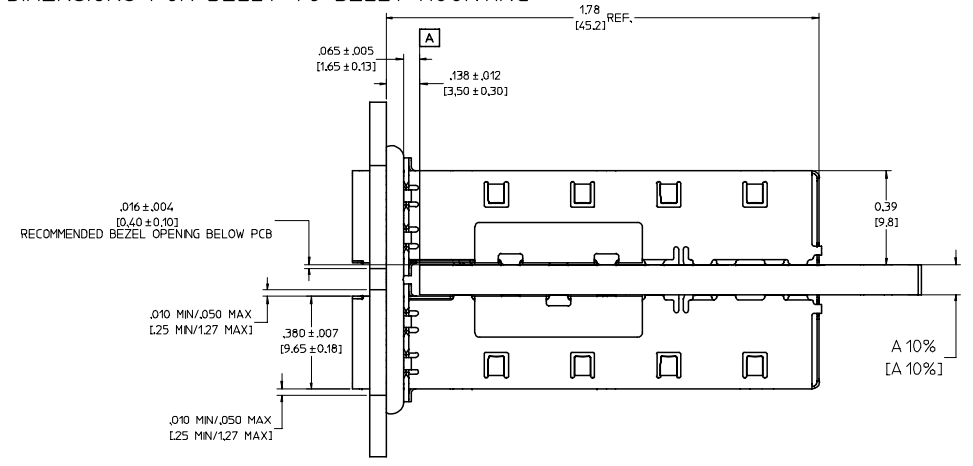
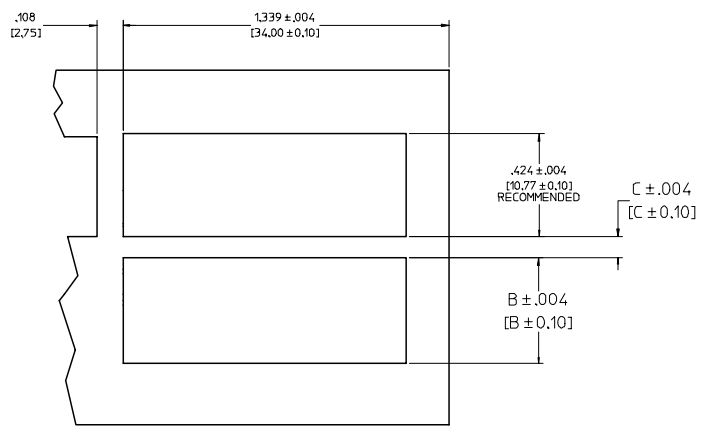
NOTES:

- PADS AND VIAS GO TO CHASSIS GROUND. (19 PLACES).
RECOMMENDED PADS TO BE 2mm SQUARE.
- PLATING OPTIONAL FOR THROUGH HOLES (6 PLACES)
- RECOMMENDED PLATING INCLUDES HASL, IMMERSION (GOLD, SILVER, OR TIN), AND OSP.
- HOLE PATTERN REPEATS FOR EACH PORT.
SPACING BETWEEN PORTS IS 0.561 [14.25]
- CONNECTOR PAD LAYOUT PER SFP MSA. WILL ACCOMMODATE MOLEX
CONNECTOR SERIES 74441 OR EQUIVALENT.

ENTER DESCRIPTION EC NO: UST2006-0073 DR: DRANKS MONSON 2006/01/17 CHK: BRUSSELL 2006/01/28 APPR: BRUSSELL 2006/01/25 REV DESCRIPTION	QUALITY SYMBOLS	GENERAL TOLERANCES (UNLESS SPECIFIED)	DIMENSION STYLE	SCALE	DESIGN UNITS	THIRD ANGLE PROJECTION
	$\nabla=0$ $\nabla=0$	mm INCH 4 PLACES ± .005 ± .005 3 PLACES ± .013 ± .010 2 PLACES ± 0.25 ± .010 1 PLACE ± 0.25 ± .010 ANGULAR ± 1°	IN/MM	6:1	METRIC	
	DRAWN BY: KS IMONSO CHECKED BY: BRUSSELL APPROVED BY: BRUSSELL	DATE: 2003/09/25 DATE: 2003/10/27 DATE: 2003/10/27	TITLE: 1X2 SFP GANGED CAGE ASSEMBLY, PRESS FIT MATERIAL NO: 747220001 DOCUMENT NO: SD-74722-001	MOLEX INCORPORATED	SHEET NO: 3 OF 5	
	DRAFT WHERE APPLICABLE MUST REMAIN WITHIN DIMENSIONS					



BEZEL AND BOARD POSITION DIMENSIONS FOR SINGLE SIDE MOUNTING



BEZEL AND BOARD POSITION DIMENSIONS FOR BELLY TO BELLY MOUNTING

NOTE: FOR A GIVEN BOARD THICKNESS (A), DIMENSIONS (B) AND (C) ARE DIRECTLY AFFECTED.

USE RECOMMENDED DIMENSIONS AND TOLERANCES TO AID IN DEVELOPING BEZEL OPENING.

FOR EXAMPLE USING A BOARD THICKNESS OF .125" THE RECOMMENDED VALUES WOULD BE:

A= .125/3.18 ± 10%
 B= .434/11.03 ± .004
 C= .088/2.23 ± .004

ENTER DESCRIPTION EC NO: UST2006-0073 DRWNS:IMONSO 2006/01/17 CHKD:BRUSSELL 2006/01/26 APPR:BRUSSELL 2006/01/25	QUALITY SYMBOLS	GENERAL TOLERANCES (UNLESS SPECIFIED)	DIMENSION STYLE	SCALE	DESIGN UNITS	THIRD ANGLE PROJECTION
	$\nabla=0$ $\nabla=0$	4 PLACES ± --- ± --- 3 PLACES ± --- ± .005 2 PLACES ± 0.13 ± .010 1 PLACE ± 0.25 ± --- ANGULAR ± 1 °	IN/MM INCH	4:1	METRIC	<input checked="" type="checkbox"/> THIRD ANGLE <input type="checkbox"/> PROJECTION
	DESCRIPTION	DRAWN BY	DATE	TITLE	MOLEX INCORPORATED	
		KS IMONSO	2003/09/25	1X2 SFP GANGED CAGE ASSEMBLY, PRESS FIT	MATERIAL NO:	DOCUMENT NO:
		BRUSSELL	2003/10/27	747220001	SD-74722-001	4 OF 5
		BRUSSELL	2003/10/27	THIS DRAWING CONTAINS INFORMATION THAT IS PROPRIETARY TO MOLEX INCORPORATED AND SHOULD NOT BE USED WITHOUT WRITTEN PERMISSION		

20 19 18 17 16 15 14 13 12 11 10 9 8 7 6 5 4 3 2 1

M

L

K

J

I

H

G

F

E

D

C

B

A

M

L

K

J

I

H

G

F

E

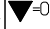
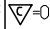

D

C

B

A

DATE	REV	CHANGES	COMMENTS
10/27/2003	A	INITIAL RELEASE	N/A
10/06/2005	B	ADDED PCB AND BEZEL LAYOUT	N/A

ENTER DESCRIPTION EC NO: UST2006-0073 DRWNS: MONSON 2006/01/17 CHKD: BRUSSELL 2006/01/28 APPR: BRUSSELL 2006/01/25	QUALITY SYMBOLS  = 0  = 0.05	GENERAL TOLERANCES (UNLESS SPECIFIED)		DIMENSION STYLE IN/MM		SCALE 1:1	DESIGN UNITS METRIC	 THIRD ANGLE PROJECTION
		4 PLACES ± --- ± --- 3 PLACES ± --- ± .005 2 PLACES ± 0.13 ± .010 1 PLACE ± 0.25 ± --- ANGULAR ± 1 °	mm INCH --- --- --- --- --- --- --- ---	DRAWN BY KS IMONSO	DATE 2003/09/25	TITLE 1X2 SFP GANGED CAGE ASSEMBLY, PRESS FIT		
		DRAFT WHERE APPLICABLE MUST REMAIN WITHIN DIMENSIONS		APPROVED BY BRUSSELL	DATE 2003/10/27	MATERIAL NO. 747220001		DOCUMENT NO. SD-74722-001
THIS DRAWING CONTAINS INFORMATION THAT IS PROPRIETARY TO MOLEX INCORPORATED AND SHOULD NOT BE USED WITHOUT WRITTEN PERMISSION								SHEET NO. 5 OF 5

19 18 17 16 15 14 13 12 11 10 9 8 7 6 5 4 3 2 1