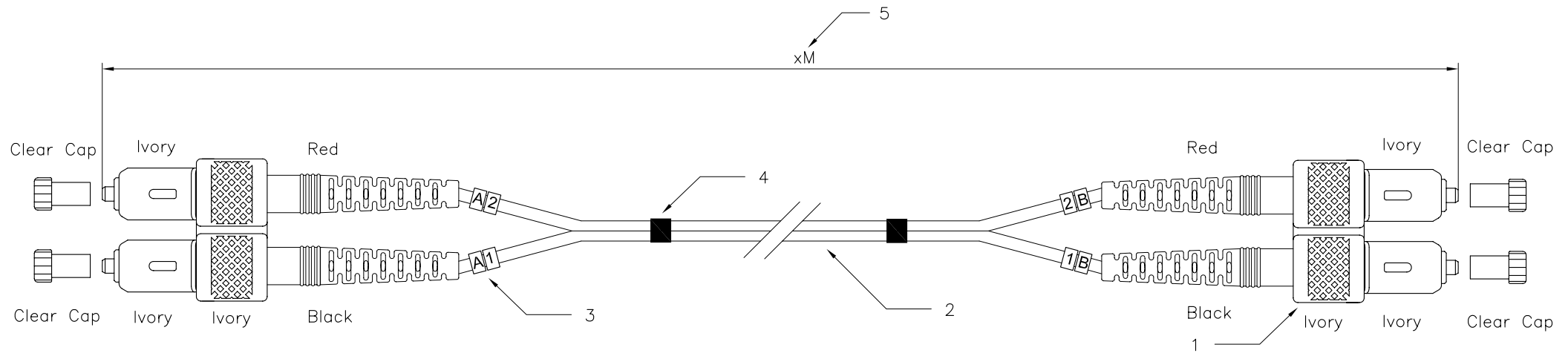


Part No.	(6)Length	Part No.	(6)Length
3510-0.5	0.5M	3510-10	10M
3510-1	1M	3510-15	15M
3510-2	2M	3510-20	20M
3510-3	3M	3510-50	50M
3510-5	5M		



Specification:

1. Connector Type : II SC/PC Multimode
2. Cable Type :
 - 2-1 Zipcord cable, $\phi 3.0\text{mm}$, 62.5/125um Multimode
 - 2-2 Calbe Jacket : Gray color, LSZH material
3. Cable Marker
4. Shrink Tube
5. Length : xM

Performance:

- a. Insertion Loss : $< 0.5 \text{ dB}$
- b. Fiber Extention : $-0.05\mu\text{m} < H < +0.05\mu\text{m}$
- c. Ferrule End-face Radius : $10 < R < 25\text{mm}$
- d. Apex Offset : $< 50\mu\text{m}$
- e. Increase in insertion loss after 500 mating : 0.2 dB Max.
- f. Operation Temperature : -20° to $+70^\circ$
- g. Storage Temperature : -40° to $+80^\circ$

RoHS Compliant

	DSGN	CSQ	30.MAY.2007	ITEM NO: 3510
	CHK	Maer	30.MAY.2007	
UNIT	M/M	APPR	Yty	SC to SC Duplex patch cord
SCALE	1/1			
DWG NO: 3510	Videk Ltd			