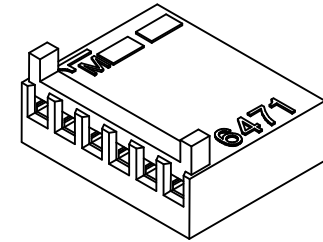
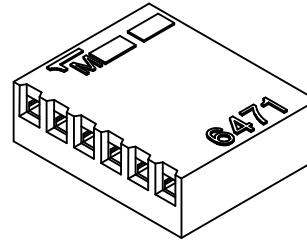
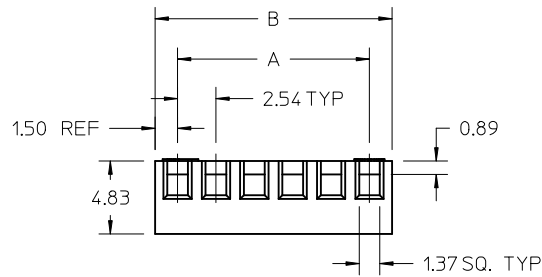
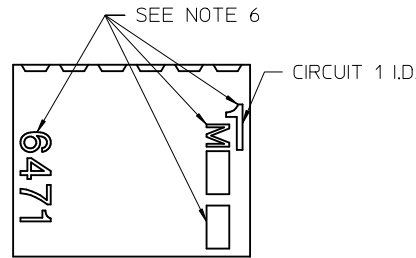
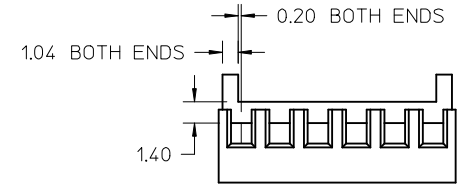
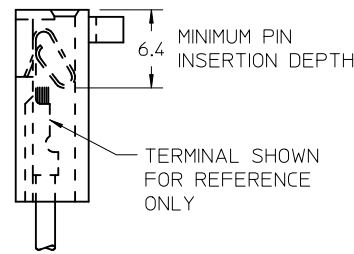
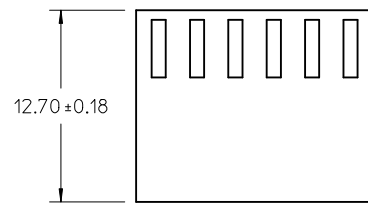


22	53.34±0.35	56.34±0.35
21	50.80±0.35	53.80±0.35
20	48.26±0.35	51.26±0.35
19	45.72±0.35	48.72±0.35
18	43.18±0.35	46.18±0.35
17	40.64±0.35	43.64±0.35
16	38.10±0.35	41.10±0.35
15	35.56±0.35	38.56±0.35
14	33.02±0.35	36.02±0.35
13	30.48±0.35	33.48±0.35
12	27.94±0.35	30.94±0.35
11	25.40±0.35	28.40±0.35
10	22.86±0.35	25.86±0.35
9	20.32±0.35	23.32±0.35
8	17.78±0.35	20.78±0.35
7	15.24±0.35	18.24±0.35
6	12.70±0.15	15.70±0.15
5	10.16±0.15	13.16±0.15
4	7.62±0.15	10.62±0.15
3	5.08±0.15	8.08±0.15
2	2.54±0.15	5.54±0.15
No. OF CCTS	DIM A	DIM B



SHOWN WITH OPTIONAL RAMP AND POLARIZATION RIBS



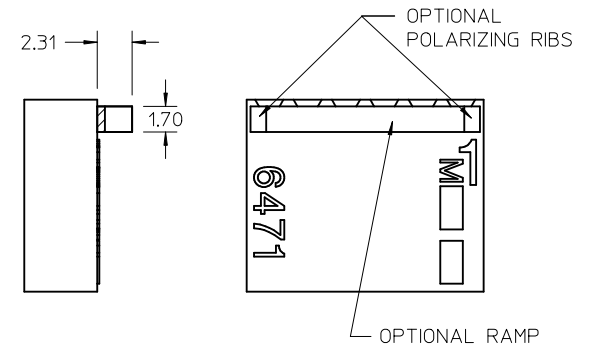
LEGEND

E-6471-\*N\*

MATERIAL  
BLANK= NATURAL

# OF CIRCUITS

OPTION CODE  
BLANK=NO RAMP OR POLARIZATION RIB  
|= RAMP AND POLARIZATION RIB



OPTIONAL RAMP AND POLARIZING RIBS

NOTES:

1. MATERIAL:  
"BLANK": POLYAMIDE (PA66/6), UL94V-0, COLOR: NATURAL (WHITE)
2. FINISH: N/A
3. PRODUCT SPECIFICATION: PS-99020-0088
4. PACKAGING: BULK
5. FOR USE WITH TERMINAL SERIES 2759, 41572, 4809, 6459, AND 8088.
6. TEXT MAY BE PRESENT ON EITHER SIDE OF PART.
7. THIS PART CONFORMS TO CLASS B REQUIREMENTS OF COSMETIC SPECIFICATION PS-45499-002.

RE DRAWN	EC NO: UCP2011-0386	DRW:MK/PPER 2011/05/27	CHKD:ANDERSON 2011/05/27	APPR:FSMITH 2011/10/11	QUALITY SYMBOLS	GENERAL TOLERANCES (UNLESS SPECIFIED)		DIMENSION STYLE MM ONLY		SCALE 4:1	DESIGN UNITS METRIC	THIRD ANGLE PROJECTION	
						4 PLACES ± --- ± ---	3 PLACES ± --- ± ---	DRAWN BY SF	DATE 2000/07/14	TITLE KK 2.54MM CRIMP TERMINAL HOUSING			
G	REV	DESCRIPTION	MATERIAL	# OF CIRCUITS	OPTION CODE	2 PLACES ± 0.15 ± ---	1 PLACE ± 0.25 ± ---	ANGULAR ± ---°	DRAFT WHERE APPLICABLE MUST REMAIN WITHIN DIMENSIONS	APPROVED BY FSMITH	DATE 2011/10/11	DOCUMENT NO. SD-6471-N*-**	SHEET NO. 1 OF 2
						THIS DRAWING CONTAINS INFORMATION THAT IS PROPRIETARY TO MOLEX INCORPORATED AND SHOULD NOT BE USED WITHOUT WRITTEN PERMISSION							

E-6471-N		
PART No.	ENG No.	No. OF CIRCUITS
22-01-2026	E-6471-2	2
↑ -2036	↑ -3	3
-2046	-4	4
-2056	-5	5
-2066	-6	6
-2076	-7	7
-2086	-8	8
-2096	-9	9
-2106	-10	10
-2116	-11	11
-2126	-12	12
-2136	-13	13
-2146	-14	14
-2156	-15	15
-2166	-16	16
-2176	-17	17
-2186	-18	18
-2196	-19	19
-2206	-20	20
↓ -2216	↓ -21	21
22-01-2226	E-6471-22	22

E-6471-NI		
PART No.	ENG No.	No. OF CIRCUITS
22-01-2025	E-6471-02I	2
↑ -2035	↑ -03I	3
-2045	-04I	4
-2055	-05I	5
-2065	-06I	6
-2075	-07I	7
-2085	-08I	8
-2095	-09I	9
-2105	-10I	10
-2115	-11I	11
-2125	-12I	12
-2135	-13I	13
-2145	-14I	14
-2155	-15I	15
-2165	-16I	16
-2175	-17I	17
-2185	-18I	18
-2195	-19I	19
-2205	-20I	20
↓ -2215	↓ -21I	21
22-01-2225	E-6471-22I	22

<b>SEE SHEET 1</b> EC NO: UCP2011-0386 DRWN:MKIPPER 2011/05/27 CHKD:ANDERSON 2011/05/27 APPR:FSMITH 2011/10/11	QUALITY SYMBOLS 	GENERAL TOLERANCES (UNLESS SPECIFIED) <table border="1"> <tr><th></th><th>mm</th><th>INCH</th></tr> <tr><td>4 PLACES</td><td>± .005</td><td>± .0004</td></tr> <tr><td>3 PLACES</td><td>± .005</td><td>± .0004</td></tr> <tr><td>2 PLACES</td><td>± 0.15</td><td>± .005</td></tr> <tr><td>1 PLACE</td><td>± 0.25</td><td>± .010</td></tr> </table>		mm	INCH	4 PLACES	± .005	± .0004	3 PLACES	± .005	± .0004	2 PLACES	± 0.15	± .005	1 PLACE	± 0.25	± .010	DIMENSION STYLE <b>MM ONLY</b>	SCALE <b>1:1</b>	DESIGN UNITS <b>METRIC</b>	THIRD ANGLE PROJECTION
		mm	INCH																		
	4 PLACES	± .005	± .0004																		
	3 PLACES	± .005	± .0004																		
2 PLACES	± 0.15	± .005																			
1 PLACE	± 0.25	± .010																			
DRAWN BY SF	DATE 2000/07/14	CHECKED BY DWASZKIEWICZ	DATE 2006/02/27	<b>KK 2.54MM CRIMP TERMINAL HOUSING</b>																	
APPROVED BY FSMITH	DATE 2011/10/11	<b>MOLEX INCORPORATED</b>																			
MATERIAL NO. <b>SEE CHART</b>		DOCUMENT NO. <b>SD-6471-N*-**</b>		SHEET NO. <b>2 OF 2</b>																	
DRAFT WHERE APPLICABLE MUST REMAIN WITHIN DIMENSIONS																					
THIS DRAWING CONTAINS INFORMATION THAT IS PROPRIETARY TO MOLEX INCORPORATED AND SHOULD NOT BE USED WITHOUT WRITTEN PERMISSION																					



	10	9	8	7	6	5	4	3	2	1
	22-01-2285	E-6471-281	28	○						
	設備無し NOT TOOLED		↑ -271	27	↑					
	22-01-2265		↑ -261	26						
	設備無し NOT TOOLED		↑ -251	25						
	22-01-2245		↑ -241	24						
	↑ -2235		↑ -231	23						
	↑ -2225		↑ -221	22						
	↑ -2215		↑ -211	21						
	↑ -2205		↑ -201	20						
	↑ -2195		↑ -191	19						
	↑ -2185		↑ -181	18						
	↑ -2175		↑ -171	17						
	↑ -2165		↑ -161	16						
	↑ -2155		↑ -151	15						
	↑ -2145		↑ -141	14						
	↑ -2135		↑ -131	13						
	↑ -2125		↑ -121	12						
	↑ -2115		↑ -111	11						
	↑ -2105		↑ -101	10						
	↑ -2095		↑ -091	9						
	↑ -2085		↑ -081	8						
	↑ -2075		↑ -071	7						
	↑ -2065		↑ -061	6						
	↑ -2055		↑ -051	5						
	↑ -2045		↑ -041	4						
	↓ -2035		↓ -031	3						
	22-01-2025	E-6471-021	2	○						
	PART NO.	ENG. NO.	極数 NO. OF CKTS.	補給部 RAMP & POL.RIBS	A	B				

注記  
NOTES

- 適合ターミナル 4809-\* (22-30 GA)  
クリンプ部 被覆外径  $\Phi 1.58\text{mm}$ 以下  
FOR USE TERMINAL 4809-\* (22-30 GA)  
CRIMP TYPE ,MAX. INSULATION  $\Phi 1.58\text{mm}$
- ハウジングの端と端を合わせて積み重ねることができる。  
TWO(2) HOUSINGS MAY BE STACKED END TO END.
- ( ) 内寸法は参考寸法  
( ) DIMENSION IS FOR REFERENCE.
- 本製品は仕様書NO. 10-07に基づく。  
THIS PART CONFORMS TO MOLEX PRODUCT SPEC. NO.10-07
- Ⓐ トレードマーク：MOLEXプラス1文字の製造国を示すアルファベットにて構成。  
(例：I=アイルランド)  
TRADE MARK FORMED BY MOLEX AND 1 MORE LETTER OF ALPHABET WHICH MEAN THE MANUFACTURING COUNTRY. (c.g. I=IRELAND)
- 19から28極は標準品ではありません。  
19-28 CIRCUITS ARE NON-STANDARD.
- 一般公差： $\pm 0.4$   
GENERAL TOLERANCES: $\pm 0.4$

VOID  
SEE SD-6471-N\*-\*\*

W	VOID	2 VOID	EC NO: UCP2012-3072	DRWN:MMSTROH 2012/03/19	CHKD:HKIPPER 2012/03/21	APPR:FSMITH 2012/03/28	DESCRIPTION	QUALITY SYMBOLS	GENERAL TOLERANCES (UNLESS SPECIFIED)		DIMENSION STYLE		SCALE	DESIGN UNITS	THIRD ANGLE PROJECTION	
	MMSTROH								UCP2012-3072	mm	INCH	MM ONLY	---	METRIC	◎ □	
								▽E=0	4 PLACES	± ---	± ---	DRAWN BY	DATE	TITLE		
								▽E=0	3 PLACES	± ---	± ---	Y. KANNO	Y. MIZUNO	HOUSING KK(2.54)/100 CRIMP TYPE ANTI-FISH HOOKING TERM		
								▽E=0	2 PLACES	± ---	± ---	CHECKED BY	DATE			
									1 PLACE	± ---	± ---	Y. MIZUNO	1997/09/19	molex		
									0 PLACE	±	±	APPROVED BY	DATE			
									ANGULAR ±---°		MATERIAL NO.		DOCUMENT NO.		SHEET NO.	
									DRAFT WHERE APPLICABLE MUST REMAIN WITHIN DIMENSIONS		SEE CHART		SDE-6471-N*-**		2 OF 2	
V	新規作成 RELEASED (JC80224)	Y.K	Y.M	97/09/18					THIS DRAWING CONTAINS INFORMATION THAT IS PROPRIETARY TO MOLEX INCORPORATED AND SHOULD NOT BE USED WITHOUT WRITTEN PERMISSION							
記号 LTR	変更内容 REVISION RECORD	DR	CHK	日付 DATE	W	REV										