

MICRO SWITCH

A DIVISION OF MINNEAPOLIS-HONEYWELL REGULATOR COMPANY
MINNEAPOLIS, MINNESOTA

FED. MFR. CODE 91929

SWITCH - BASIC

CATALOG LISTING
BZ-2RW822T

APF5000

BZ-2RW822T

PAGE 1 OF 1

M

DRAWING NUMBER

ISSUE 13

REPLACES

RELEASE NO.

CHECK

23 AUG 05

RJ

CHECK

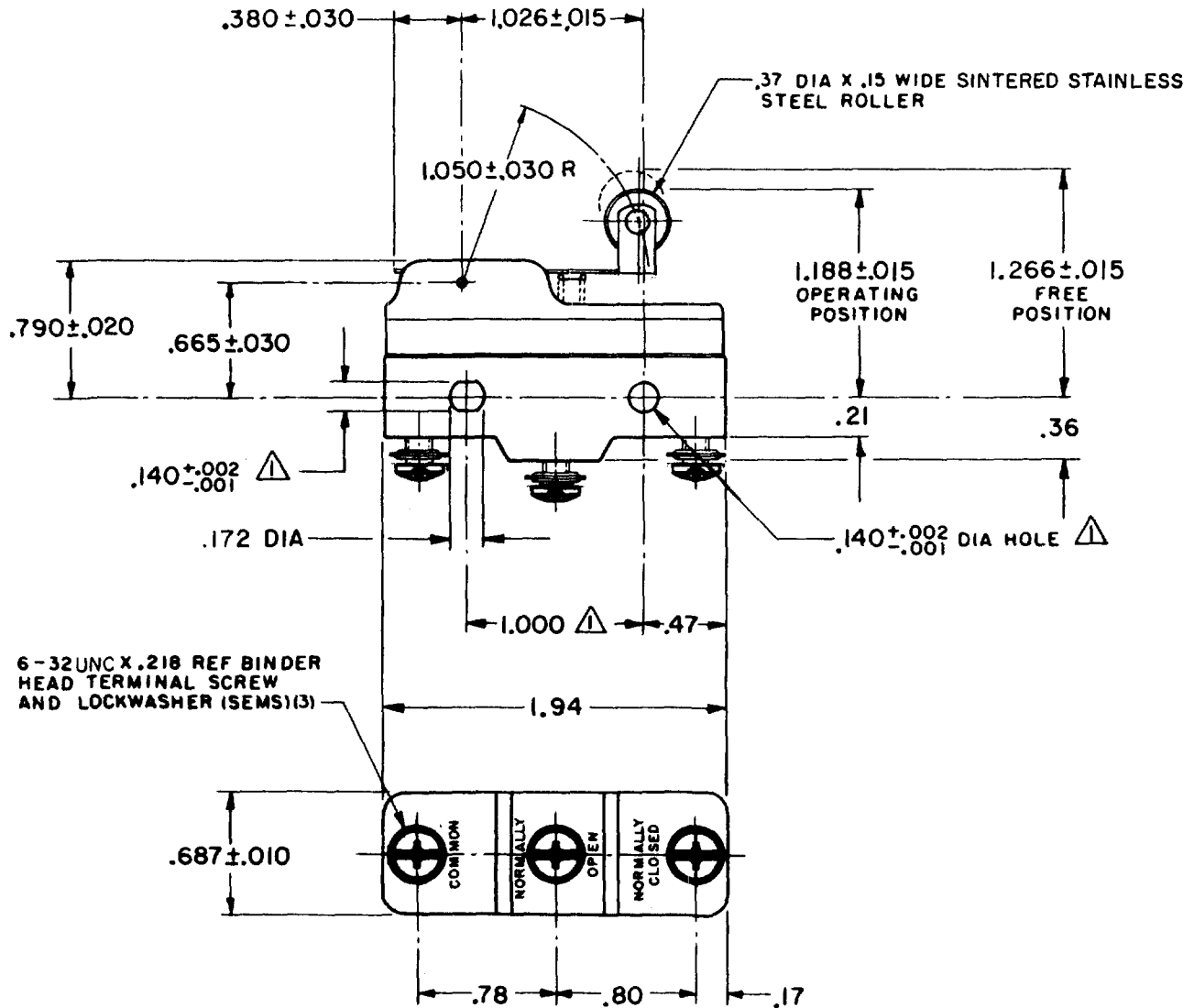
4, MAY 62

CHECK

23 AUG 05

10 APRIL 62

CHECK



NOTE
 ▲ - MOUNTING HOLES WILL ACCEPT PINS OR SCREWS OF .139 MAX DIA ON 1.000 ± .002 CENTERS

REVISIONS

A	CO	16736	6 C H	10 APRIL 62
B	CO	34306	GLH	8 JUL 75
C	CO	52446	WJM	31 JAN 83
D	CO	89351-D	JWB	18 JUL 91
E	CO	70184-H	6 R T	2 JUN 92
F	CO	75204B	DAW	1 FEB 94
G	CO	77589	MAM	29 MAR 94
H	CO	93346	DLT	2 SEP 98
J	CO	0015139	TSG	23 AUG 05

FORMTEK

FO-50378

THIS DRAWING COVERS A PROPRIETARY ITEM AND IS THE PROPERTY OF MICRO SWITCH, A DIVISION OF MINNEAPOLIS-HONEYWELL REGULATOR CO. THIS DRAWING IS NOT TO BE COPIED OR USED WITHOUT THE APPROVAL OF MICRO SWITCH.

CHARACTERISTICS

OPERATING FORCE ----- 6 OZ MAX
 RELEASE FORCE ----- 1 1/2 OZ MIN
 DIFFERENTIAL TRAVEL ----- .003 - .020
 OVERTRAVEL ----- .094 MIN

ELECTRICAL DATA

CONTACT ARRANGEMENT
 S P D T

- L74 - 15A-125, 250, OR 480 VAC; 2A-600 VAC
 1/2 A-125 VDC; 1/4 A-250 VDC
 1/8 HP-125 VAC; 1/4 HP-250 VAC

-L288-
 -L306-
 -L315-

CE EN 05 EC

16A 250V ~ T85 5E4

SCALE FULL

DO NOT SCALE PRINT

UNLESS OTHERWISE SPECIFIED
 DIMENSIONS ARE IN INCHES
TOLERANCES ARE:
 ONE PLACE (.0) ±.030
 TWO PLACE (.00) ±.015
 THREE PLACE (.000) ±.005
 ANGLES ±

WEIGHT .076 LB