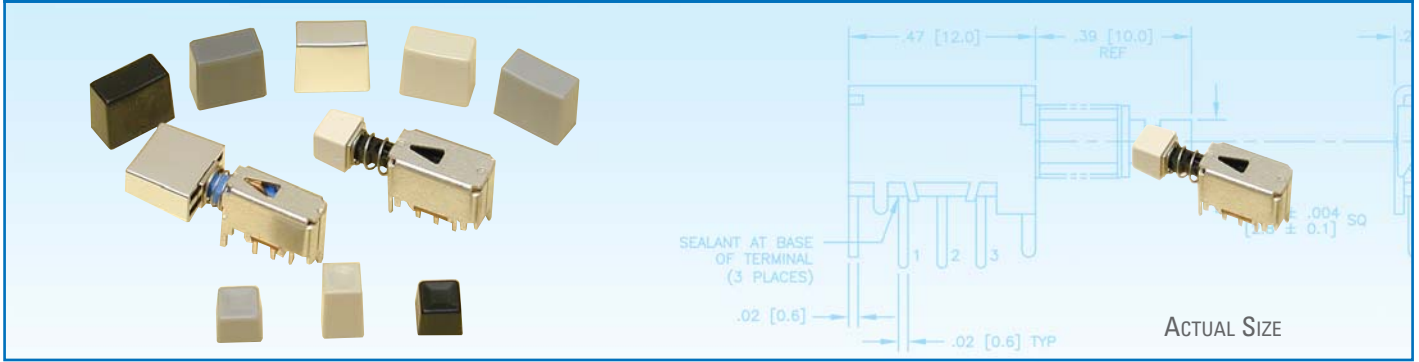


## SERIES 100



### RIGHT ANGLE MINIATURE PUSHBUTTON SWITCH

The Series 100 right angle miniature pushbutton switch is available in momentary or self-lock (maintained) action with a variety of keycap styles and colors. Ideal for high volume, low-cost electrical applications.

#### KEY FEATURES:

- Momentary or self-lock (maintained) operation
- Single or double pole
- PCB terminals
- Silver contacts

#### TYPICAL APPLICATIONS:

- Toys
- Consumer electronics
- Telcom/Datacom products
- Test and measurement
- Medical

### ORDERING INFORMATION:

#### Switch

Part Number	Switch Action	Circuit	Actuator Color
<b>100-510-501</b>	Momentary	DPDT	Black
<b>100-510-502</b>	Self-Lock (maintained)	DPDT	Blue
<b>100-510-507</b>	Self-Lock (maintained)	SPDT	Blue
<b>100-510-508</b>	Momentary	SPDT	Black

#### Keycaps

Part Number	Color*	Keycap Style
<b>55-002-230</b>	Black	Rectangular
<b>55-002-231</b>	Light Grey	Rectangular
<b>55-002-232</b>	Dark Grey	Rectangular
<b>55-002-233</b>	White	Rectangular
<b>55-002-234</b>	Bright Chrome	Rectangular
<b>55-002-235</b>	Satin Chrome	Rectangular
<b>55-002-091</b>	Sand	Large Square
<b>80-397010</b>	Light Grey	Small Square
<b>80-397012</b>	Black	Small Square
<b>80-397013</b>	White	Small Square

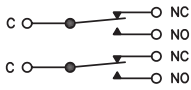
\*For other colors, please consult factory.

### STANDARDS / AGENCY / RATINGS:

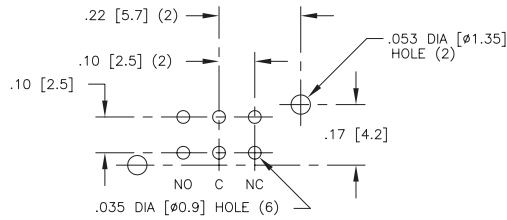


# SERIES 100—RIGHT ANGLE MINIATURE PUSHBUTTON SWITCH

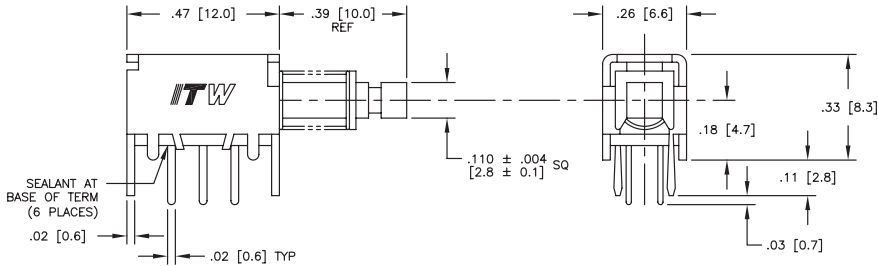
## SWITCHES:



**SCHEMATIC**



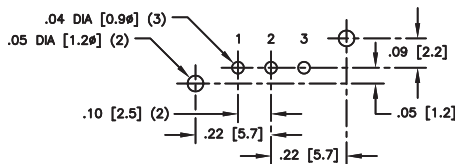
**RECOMMENDED PCB HOLE PATTERN**



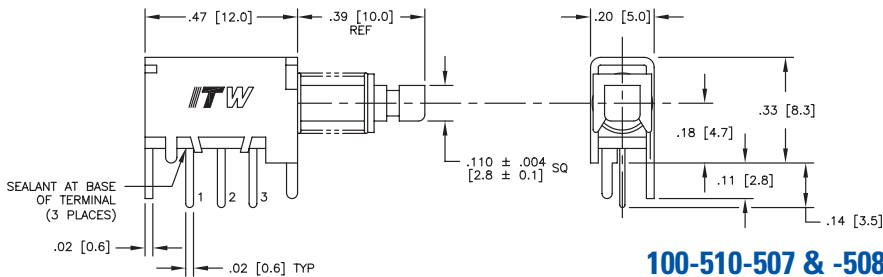
**100-510-501 & -502**



**SCHEMATIC**



**RECOMMENDED PCB HOLE PATTERN**



**100-510-507 & -508**

## MECHANICAL / ELECTRICAL CHARACTERISTICS:

### Contact Rating:

500 mA, 30 VDC  
(100 -510 -501 & -502)

800 mA, 30 VDC  
(100 -510 -507 & -508)

### Contact Type:

Non-Shorting

### Initial Contact Resistance:

50 milliohms MAX @  
5 VDC, 100 mA

### Travel Full:

.14" (3.5 mm)

### Travel Lock:

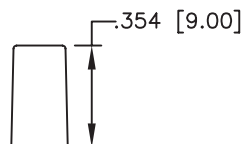
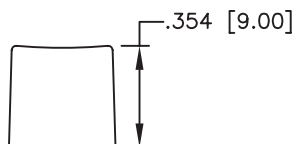
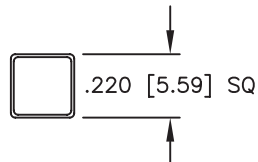
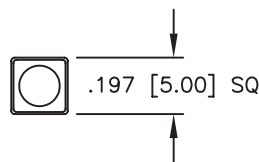
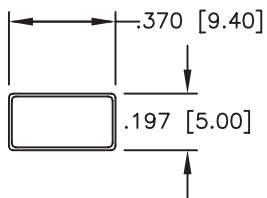
.10" (2.5 mm)

### Operating Force:

330 ± 100 Grams  
(-501 & -502)

230 ± 100 Grams  
(-507 & -508)

## KEYCAPS:



**RECTANGULAR**

**LARGE SQUARE**

**SMALL SQUARE**

**ITW Switches**

Norway Road  
Portsmouth, Hampshire  
PO3 5HT, England  
Tel: +44 (0) 23 9265 6200  
Fax: +44 (0) 23 9266 6352  
www.itwswitches.co.uk  
info@itwswitches.co.uk