

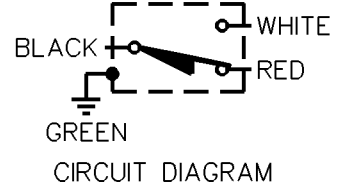
MICRO SWITCH
a Honeywell Division

FED. MFG. CODE 91929

**MINIATURE PRECISION
LIMIT SWITCH**

CATALOG LISTING

914CE18-9



914CE18-9

M

DRAWING
NUMBER

3

ISSUE

REPLACES
RELEASE NO. PR-7324

CHECK

REVISIONS

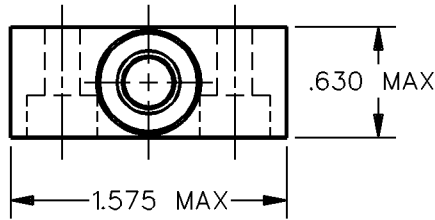
A	CO-69061
S A V	4 OCT 91

CHECK

CHECK

DRAWN
S A V 4 OCT 91

DDM/CAD



.071 MAX
PRETRAVEL

.980 ± .039
OPERATING
POSITION

2.480 MAX

108.000 MIN

2X Ø .200 ± .010
MOUNTING HOLES
(Ø .40 C'BORE
.24 DEEP)

.300 ± .010

1.732 MAX

P.V.C. SHEATHED CABLE
18/4 S.J.T.O.

.984 ± .010

Ø.280 STAINLESS
STEEL PLUNGER

NEOPRENE
SEAL

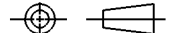
NOTES

1 - ZINC HOUSING FINISHED WITH GRAY PAINT

ANSI Y14.5M-1982 APPLIES

THIS DRAWING COVERS A PROPRIETARY ITEM AND IS THE PROPERTY OF MICRO SWITCH, A DIVISION OF HONEYWELL. THIS DRAWING IS NOT TO BE COPIED OR USED WITHOUT THE APPROVAL OF MICRO SWITCH.

THIRD ANGLE PROJECTION



CHARACTERISTICS	ELECTRICAL DATA	SCALE	FULL	DO NOT SCALE PRINT
		OPERATING FORCE — — — — 5 LB MAX	CONTACT ARRANGEMENT S P D T	UNLESS OTHERWISE SPECIFIED TOLERANCES ARE
DIFFERENTIAL TRAVEL — — — .004 MAX	5A - 250 VAC 1/10HP - 125 OR 250 VAC 	ONE PLACE	(.0)	± .030
OVERTRAVEL — — — — .118 MIN		TWO PLACE	(.00)	± .015
		THREE PLACE	(.000)	± .005
		ANGLES		±
		WEIGHT		