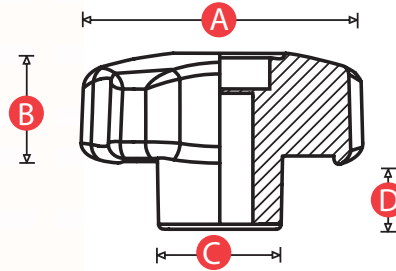


Model 12 - Soft touch Hand-wheels - Threaded Insert



Model NO.	A	B	C	D	THREAD SIZE	WEIGHT (g)
KN12FI28	28	16	12	10	M5	7.6
KN12FI40	40	17	18	12	M6	16.8
KN12FI50	50	19	21	12	M8	25.6
KN12FI60	60	21	23	13	M10	39.2

Standard Colour: Black
 Insert Material: Brass
 Material: Two-part mouldings: inner moulding Polypropylene, overmoulded with "soft-touch" TPE