

R95-115



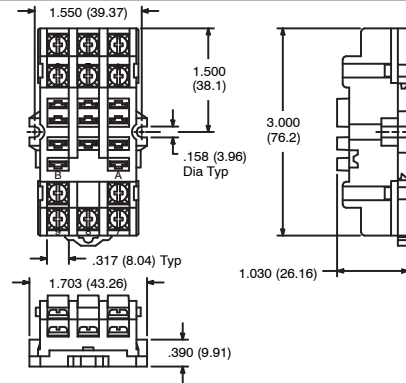
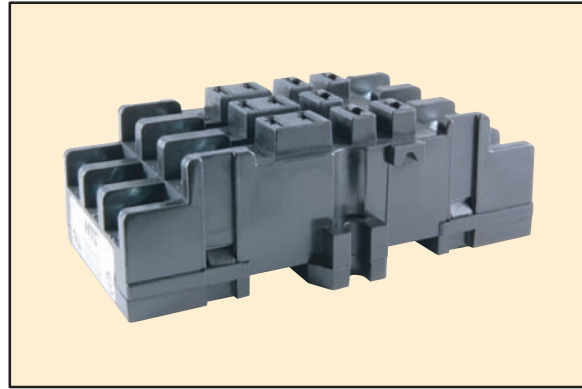
11-Pin Square Base Socket

Features

- Panel/Surface Mount
- DIN Rail Mountable
- Pressure Clamp Screws

Electrical Rating:

300 Volts, 10 Amps



R95-116

11-Pin Square Base Socket

Features

- Panel Mount
- Solder Terminals
- Accepts .187" Blade Terminals
- SPDT, DPDT and 3PDT Applications

Electrical Rating:

300 Volts, 10 Amps

