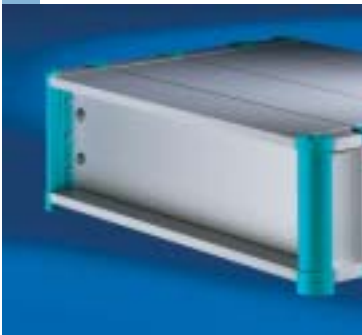


Rittal RiCase - external mounting

Blanking plates



**Material:**  
 3 mm aluminium, natural anodised  
 482.6 mm (19")  
 2 mm aluminium, natural anodised  
 269.2 mm (1/2 19")

**Notes:**  
 Order mounting angles for 482.6 mm (19")  
 blanking plates separately if used as rear panel.

| U  | Packs of | Model No. VC<br>269.2 mm<br>(1/2 19") | Model No. EL<br>482.6 mm<br>(19") |
|----|----------|---------------------------------------|-----------------------------------|
| 1  | 3        | 3746.000                              | 1931.200                          |
| 2  | 3        | 3747.000                              | 1932.200                          |
| 3  | 3        | 3748.000                              | 1933.200                          |
| 4  | 3        | 3749.000                              | 1934.200                          |
| 6  | 3        | -                                     | 1936.200                          |
| 7  | 3        | -                                     | 1935.200                          |
| 9  | 3        | -                                     | 1939.200                          |
| 12 | 3        | -                                     | 1937.200                          |

Ventilation front plates



For venting enclosures from front or rear.

**Material:**  
 3 mm aluminium, natural anodised

| Width          | U | P. of | Model No. EL |
|----------------|---|-------|--------------|
| 482.6 mm (19") | 1 | 3     | 2231.000     |
| 482.6 mm (19") | 2 | 3     | 2232.000     |
| 482.6 mm (19") | 3 | 3     | 2233.000     |

Blanking plate, vertically hinged



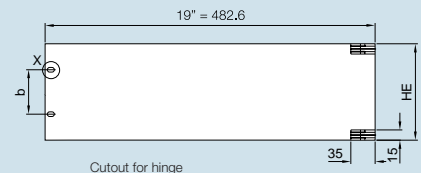
For installation in electronic enclosures or cases.

**Material:**  
 Hinges: Die-cast zinc, zinc-plated  
 Blanking plate: 3 mm aluminium, natural anodised

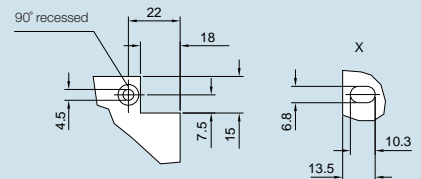
**Supply includes:**  
 2 hinges, 1 front plate, assembly parts

**Note:**  
 Order mounting angles for 482.6 mm (19") cases separately if used as rear panel.

| Width          | U | b mm   | Model No. EL |
|----------------|---|--------|--------------|
| 482.6 mm (19") | 3 | 57.15  | 1940.000     |
| 482.6 mm (19") | 6 | 190.50 | 1941.000     |



HE = U



Blanking plate, horizontally hinged



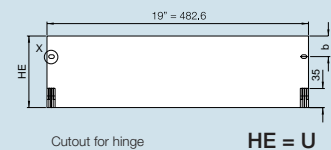
For installation in electronic enclosures or cases.

**Material:**  
 Hinges: Die-cast zinc, zinc-plated  
 Blanking plate: 3 mm aluminium, natural anodised

**Supply includes:**  
 2 hinges, 1 front plate, assembly parts

**Note:**  
 Order mounting angles for 482.6 mm (19") cases separately if used as rear panel.

| Width          | U | b mm | Model No. EL |
|----------------|---|------|--------------|
| 482.6 mm (19") | 3 | 37.7 | 1944.000     |
| 482.6 mm (19") | 6 | 37.7 | 1945.000     |



HE = U

