

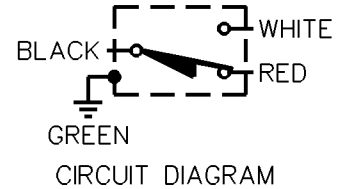
MICRO SWITCH
a Honeywell Division

FED. MFG. CODE 91929

**MINIATURE PRECISION
LIMIT SWITCH**

CATALOG LISTING

914CE18-6



914CE18-6

M

DRAWING
NUMBER

3

ISSUE

REPLACES
RELEASE NO. PR-7324

CHECK

REVISIONS

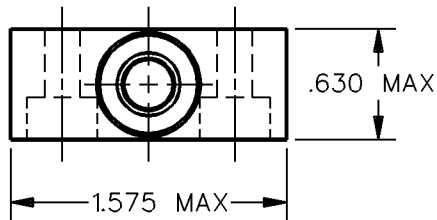
A	CO-69061
S A V	4 OCT 91

CHECK

CHECK

DRAWN
S A V 4 OCT 91

DDM/CAD



.071 MAX
PRETRAVEL

.980 ± .039
OPERATING
POSITION

2.480 MAX

72.000 MIN

2X Ø .200 ± .010
MOUNTING HOLES
(Ø .40 C'BORE
.24 DEEP)

.300 ± .010

1.732 MAX

P.V.C. SHEATHED CABLE
18/4 S.J.T.O.

.984 ± .010

Ø.280 STAINLESS
STEEL PLUNGER

NEOPRENE
SEAL

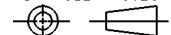
NOTES

1 - ZINC HOUSING FINISHED WITH GRAY PAINT

ANSI Y14.5M-1982 APPLIES

THIS DRAWING COVERS A PROPRIETARY ITEM AND IS THE PROPERTY OF MICRO SWITCH, A DIVISION OF HONEYWELL. THIS DRAWING IS NOT TO BE COPIED OR USED WITHOUT THE APPROVAL OF MICRO SWITCH.

THIRD ANGLE PROJECTION



CHARACTERISTICS

OPERATING FORCE — — — — 5 LB MAX
DIFFERENTIAL TRAVEL — — — .004 MAX
OVERTRAVEL — — — — — .118 MIN

ELECTRICAL DATA

CONTACT ARRANGEMENT
S P D T

5A - 250 VAC
1/10HP - 125 OR 250 VAC



SCALE FULL

DO NOT
SCALE PRINT

**UNLESS OTHERWISE SPECIFIED
TOLERANCES ARE**

ONE PLACE (.0) ± .030

TWO PLACE (.00) ± .015

THREE PLACE (.000) ± .005

ANGLES ±

WEIGHT