

Customer Information Sheet

DRAWING No.- M20-11800XX

SHEET 2 OF 2

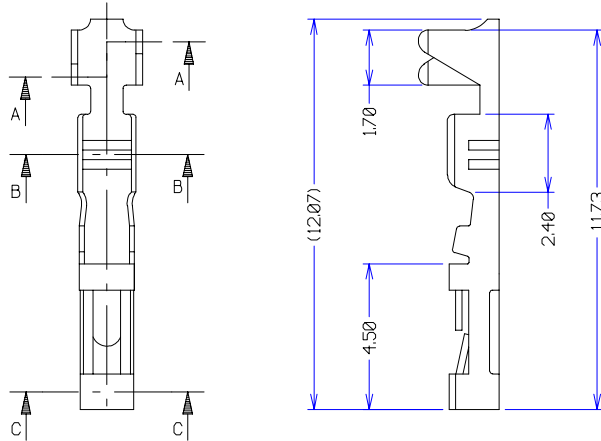
IF IN DOUBT - ASK

(C)

NOT TO SCALE

THIRD ANGLE PROJECTION

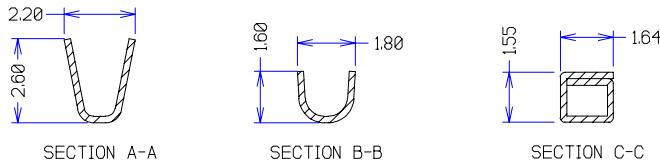
ALL DIMENSIONS IN mm



NOTES:

1. ACCEPTS WIRE RANGE 22-30 AWG.
2. DIAMETER OF WIRE INSULATION = $\varnothing 1.60-0.90$ mm.
3. STRIP WIRE BY 4.0-3.5mm.
4. PRODUCT SUPPLIED LOOSE.
5. TO BE USED WITH CRIMP MOULDINGS M20-106XX00 AND M20-107XX00. SEE MOULDING DRAWING FOR COMPONENT SPECIFICATION.
6. WITHDRAWAL FORCE = 15-08N
7. FOR COMPLETE SPECIFICATION, SEE COMPONENT SPECIFICATION C001XX (LATEST ISSUE)

ORDER CODE:
M20-11800XX
FINISH
22 = 0025 μ SELECTIVE GOLD
06 = 2.5 μ TIN



5	29.09.98	4579
4	11.08.97	4018
3	30.04.96	3289
2	26.04.96	3281
1	23.02.96	----
ISS.	DATE	C/N
APPROVED:		
CHECKED:		
DRAWN: D. BECK		
CUSTOMER REF.		
ASSEMBLY DRG:		



TOLERANCES

X = ± 1 mm
 X.X = ± 0.25 mm
 X.XX = ± 0.10 mm
 X.XXX = ± 0.01 mm
 ANGLES = $\pm 1^\circ$
 UNLESS STATED

MATERIAL:

BRASS

FINISH: SEE ABOVE

S/AREA: mm²

TITLE:

2.54mm FEMALE CRIMP
 TERMINAL (LOOSE)

DRAWING NUMBER:

M20-11800XX

SHT
 2
 OF
 2

HARWIN INC
 U.S.A.

TEL: (812) 285 0055
 FAX: (812) 285 0056

HARWIN PLC
 U.K.

TEL: 01705 370451
 FAX: 01705 314590

HARWIN PTE
 SINGAPORE

TEL: 65 7794909
 FAX: 65 7793868