

SKETCH 24404
ISSUE 1

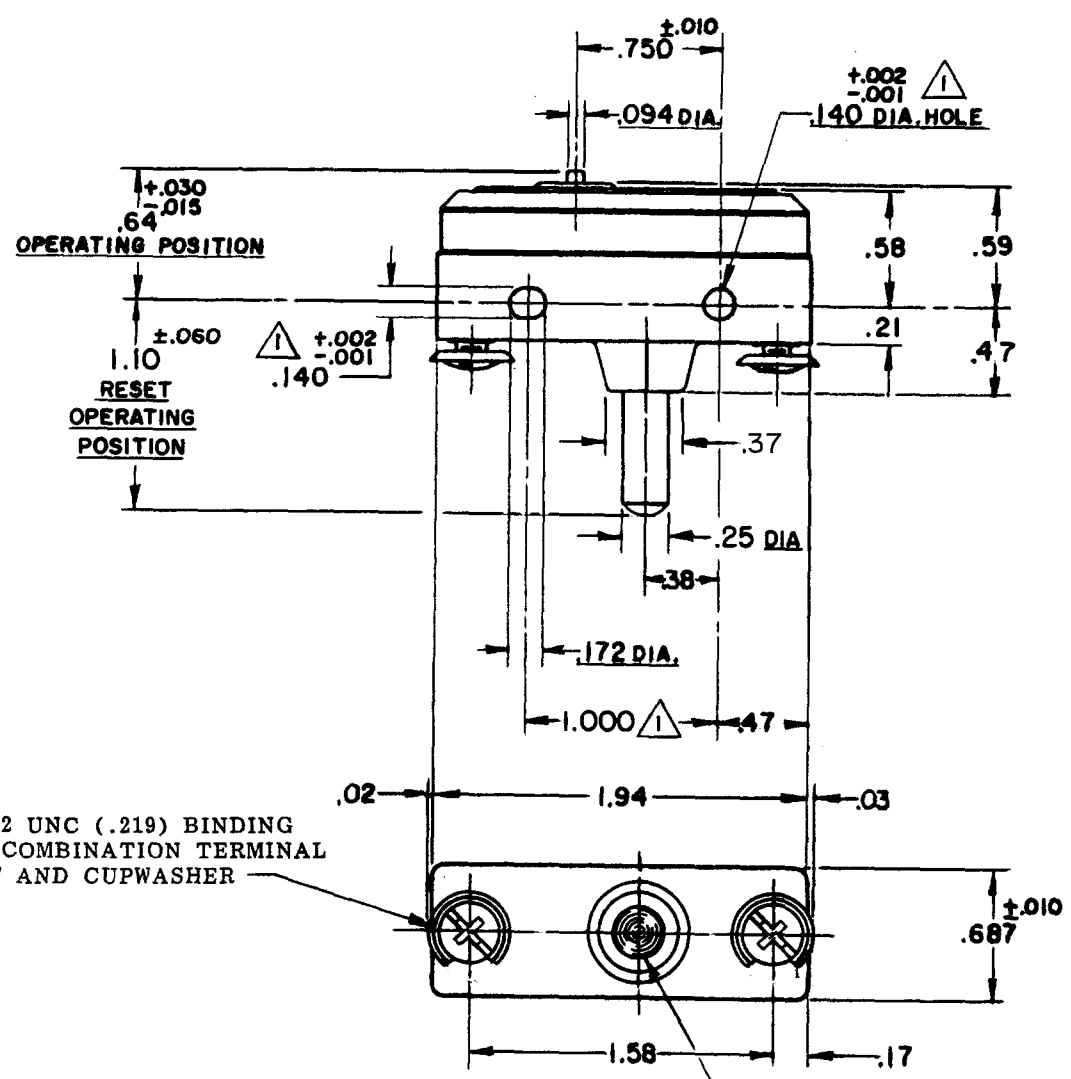
MICRO SWITCH
A DIVISION OF MINNEAPOLIS-HONEYWELL REGULATOR COMPANY
FED. MFR. CODE 91929

SWITCH - BASIC

CATALOG LISTING
WA-1RX-A4

WA-1RX-A4
PAGE 1 OF 1
M
DRAWING NUMBER
10
ISSUE

RELEASE NO. SR 8871 REPLACES



2X 8-32 UNC (.219) BINDING HEAD COMBINATION TERMINAL SCREW AND CUPWASHER

RED PLASTIC RESET BUTTON

NOTE-
MOUNTING HOLES WILL ACCEPT PINS OR SCREWS OF .139 MAX. DIA. ON 1.000 ±.008 CENTERS.

REVISIONS

A	CO 16851	MBF	18 DEC 62
B	CO 19231	H B W	25 MAY 64
C	CO 36222	R E R	9 DEC 75
D	CO 38566	K S W	1 AUG 77
E	CO 73287-G	J A L	20 OCT 93
F	CO 79609 A	DLT	14 FEB 95
G	CO-82632	DLT	25 JUL 96
H	CO84043	DLT	21 MAR 97
J	CO93346	DLT	23 SEP 98

THIS DRAWING COVERS A PROPRIETARY ITEM AND IS THE PROPERTY OF MICRO SWITCH, A DIVISION OF MINNEAPOLIS-HONEYWELL REGULATOR CO. THIS DRAWING IS NOT TO BE COPIED OR USED WITHOUT THE APPROVAL OF MICRO SWITCH.

CHARACTERISTICS	ELECTRICAL DATA	SCALE FULL
OPERATING FORCE ----- 20 OZ MAX	CONTACT ARRANGEMENT SINGLE POLE NORM CLOSED MAINTAINED CONTACT	DO NOT SCALE PRINT
DIFFERENTIAL TRAVEL ----- .008 MAX (WITH RESET PLUNGER HELD FULLY DEPRESSED)	UNDERWRITERS' LAB. INC. LISTED RATING 20 A-125; 250 OR 277 VAC 3/4 HP-125 VAC; 1 1/2 HP-250 VAC	UNLESS OTHERWISE SPECIFIED DIMENSIONS ARE IN INCHES
OVERTRAVEL ----- .010 MIN	TP -L288 -L299 -L308	TOLERANCES ARE: ONE PLACE (.0) ±.030 TWO PLACE (.00) ±.018 THREE PLACE (.000) ±.008 ANGLES ±
RESET CHARACTERISTICS OPERATING FORCE ----- 25 OZ MAX	CE D SP 20(3)A 250V ~ T85 5E4	WEIGHT

FORMTEK
17-51379
DRAWN
KLB 15 JULY 59

CHECK 14 MAR 60
CHECK 21 MAR 97