



PRODUCT CATALOGUE 2005





Contents



Dear Customer

Welcome to the JOJO Product Catalogue. JOJO is one of the leading suppliers of electrical products in the UK. Over the last 3 decades, JOJO has developed a comprehensive range of products under the banner 'Delivering power where you need it'.

Working with electricity, JOJO has always made quality a priority. All our products are tested and certified by accredited testing authorities. All goods are designed and manufactured to the latest BS and EN standards.

Packaging plays a key factor in the presentation of JOJO products. Striking designs coupled with innovative packaging concepts not only demonstrate the features of the product but also catch the attention of the consumer at POS.

The range includes Cable Reels and Trailing Leads; Wiring Accessories; Lighting and Safety Products. Many of our products reflect our Danish heritage. Cable Reels are aesthetically designed and yet practical. The Ultraslim is the most compact trailing lead in the UK has been designed to be discreet and compact. Providing 4 or 6 sockets, it tucks away neatly behind any desk or Hi-Fi cabinet. Whether decorating, working under floorboards or in the loft, Flexlight provides a safe cool light without hindering on the user.

We have just launched the option of a Safety Cut-Out feature on all our cable reels. The cut-out provides extra protection in case of a fault or over-loading. Another industry first.

Thank you for taking the time to look at our new catalogue. We are confident in our ability to give you and your customer quality products, delivered on time and at competitive prices.

Tony Lambe
JOJO Managing Director

JOJO is located in the UK, Denmark, Sweden and Finland and is part of Schneider Electric, a world leader in the manufacture of domestic and commercial electrical distribution equipment

CABLE REELS

page 4-7



EXTENSION LEADS

page 8-11



PLUG & ADAPTORS

page 12-13



ELECTRICAL WIRING ACCESSORIES

page 14-22

Power Sockets & Switches

page 15

Lighting Accessories

page 16

Lighting Switches

page 17

Mounting Boxes

page 18

Miscellaneous

page 19

Clips, Clamps & earth Sleeving

page 20

Fuse Wire, Fuses & lampholders

page 21

Small Lamps, Switches & Accessories

page 22



OUTDOOR ACCESSORIES

page 23



WORK LIGHTS & HOME SECURITY

page 24



RCD'S - RESIDUAL CURRENT DEVICES

page 25



SMOKE ALARMS & PLUG-IN TIMERS

page 26





Cable Reels

The JOJO range includes a cable reel for every application: cassette type reels for around the home; larger semi-closed reels to help keep the cable tidy; traditional open reels are simple and functional.

JOJO cable reels are manufactured to the highest quality standards. All 240V reels carry the prestigious and easily recognised BSI Kitemark.

JOJO are pioneering the introduction of safety cut-outs on all cable reels in accordance with BS EN 61242.

Smart designs and innovative packaging make JOJO cable reels the first choice:-



Safety Cut-Out

In the event of an overload, the cut-out will trip and terminate power to the connected appliances.

Simply disconnect all appliances, press the reset button and reconnect the appliances ensuring you have calculated the maximum power input/wattage correctly.

Don't forget, THE RATING OF THE CABLE REEL IS SIGNIFICANTLY REDUCED WHEN FULLY WOUND



Shelf Merchandiser Boxes

All our most popular cable reels are available in merchandisers of 5-8 reels. Designed for Point of sale and yet tough enough for transportation.

Caddies

The JOJO caddy helps to display the reel in-store and also doubles up as a storage solution. On the reverse is a simple product selector which enables the customer to choose the right reel for the application.



Shelf Merchandiser Boxes

Caddies

Cassette Cable Reels



| Product Code | Current Rating | No. sockets | Insulated Cable (3 core) | Product Colour | Packaging Style | Pack Qty | Min Order | Barcode | Suggested Retail Price Each (ex VAT) (Inc. VAT) | |
|--------------|----------------|-------------|--------------------------|----------------|-----------------|----------|-----------|---------|---|--|
|--------------|----------------|-------------|--------------------------|----------------|-----------------|----------|-----------|---------|---|--|

5 METRE REELS

| | | | | | | | | | | |
|--------|-----|---|-------------------------|-----------|--------------|---|---|---------------|-------|-------|
| 820065 | 5A | 2 | PVC 0.75mm ² | White | Merchandiser | 6 | 6 | 5759779019106 | £5.51 | £6.47 |
| 820036 | 10A | 2 | PVC 1.0mm ² | Red/Black | Merchandiser | 6 | 6 | 5759779018567 | £5.51 | £6.47 |



820065

5 METRE REELS WITH CUT-OUT

| | | | | | | | | | | |
|--------|-----|---|-------------------------|-----------|-------|---|---|---------------|-------|-------|
| 820083 | 5A | 2 | PVC 0.75mm ² | White | Caddy | 6 | 6 | 5759779019694 | £6.01 | £7.06 |
| 820084 | 10A | 2 | PVC 1.0mm ² | Red/Black | Caddy | 6 | 6 | 5759779019809 | £6.01 | £7.06 |
| 706703 | 5A | 4 | PVC 0.75mm ² | White | Caddy | 8 | 1 | 5759779019120 | £6.43 | £7.55 |
| 706717 | 13A | 4 | PVC 1.25mm ² | Red/Black | Caddy | 6 | 1 | 5759779019168 | £7.34 | £8.63 |



706717

10 METRE REELS

| | | | | | | | | | | |
|--------|-----|---|------------------------|-----------|--------------|---|---|---------------|-------|-------|
| 820079 | 10A | 2 | PVC 1.0mm ² | Red/Black | Merchandiser | 6 | 6 | 5759779017645 | £6.88 | £8.08 |
| 820063 | 10A | 4 | PVC 1.0mm ² | Red/Black | Merchandiser | 6 | 6 | 5759779019090 | £7.34 | £8.63 |



820063

10 METRE REEL WITH CUT-OUT

| | | | | | | | | | | |
|--------|-----|---|-------------------------|-----------|-------|---|---|---------------|-------|--------|
| 820085 | 10A | 2 | PVC 1.0mm ² | Red/Black | Caddy | 6 | 6 | 5759779019724 | £7.38 | £8.67 |
| 820087 | 10A | 4 | PVC 1.0mm ² | Red/Black | Caddy | 6 | 6 | 5759779019762 | £7.84 | £9.22 |
| 706724 | 13A | 4 | PVC 1.25mm ² | Red/Black | Caddy | 4 | 1 | 5759779019182 | £9.18 | £10.79 |



706724

15 METRE REEL

| | | | | | | | | | | |
|--------|-----|---|------------------------|-----------|--------------|---|---|---------------|--------|--------|
| 820034 | 10A | 4 | PVC 1.0mm ² | Red/Black | Merchandiser | 6 | 6 | 5759779019403 | £11.02 | £12.94 |
|--------|-----|---|------------------------|-----------|--------------|---|---|---------------|--------|--------|

15 METRE REEL WITH CUT-OUT

| | | | | | | | | | | |
|--------|-----|---|------------------------|-----------|-------|---|---|---------------|--------|--------|
| 820088 | 10A | 4 | PVC 1.0mm ² | Red/Black | Caddy | 4 | 1 | 5759779019779 | £11.52 | £13.44 |
|--------|-----|---|------------------------|-----------|-------|---|---|---------------|--------|--------|



820034



Semi-Enclosed Cable Reels

| Product Code | Current Rating | No. sockets | Insulated Cable (3 core) | Product Colour | Packaging Style | Pack Qty | Min Order | Barcode | Suggested Retail Price Each (ex VAT) (Inc. VAT) |
|--------------|----------------|-------------|--------------------------|----------------|-----------------|----------|-----------|---------|---|
|--------------|----------------|-------------|--------------------------|----------------|-----------------|----------|-----------|---------|---|



706635

20 METRE REEL WITH CUT-OUT

| | | | | | | | | | |
|--------|-----|---|-------------------------|-----------|---------------|---|---|---------------|----------------------|
| 706635 | 13A | 4 | PVC 1.25mm ² | Red/Black | Shoulder Wrap | 2 | 2 | 5759779019007 | £16.53 £19.43 |
|--------|-----|---|-------------------------|-----------|---------------|---|---|---------------|----------------------|



706644

30 METRE REEL WITH CUT-OUT

| | | | | | | | | | |
|--------|-----|---|-------------------------|-----------|---------------|---|---|---------------|----------------------|
| 706644 | 13A | 4 | PVC 1.25mm ² | Red/Black | Shoulder Wrap | 1 | 1 | 5759779019038 | £27.56 £32.38 |
|--------|-----|---|-------------------------|-----------|---------------|---|---|---------------|----------------------|



706650

30 METRE REEL WITH CUT-OUT & RCD

| | | | | | | | | | |
|--------|-----|---|-------------------------|-------------|---------------|---|---|---------------|----------------------|
| 706650 | 13A | 4 | PVC 1.25mm ² | Green/Black | Shoulder Wrap | 1 | 1 | 5759779019052 | £45.94 £53.98 |
|--------|-----|---|-------------------------|-------------|---------------|---|---|---------------|----------------------|



706659

50 METRE REEL WITH CUT-OUT

| | | | | | | | | | |
|--------|-----|---|------------------------|-----------|---------------|---|---|---------------|----------------------|
| 706659 | 13A | 4 | PVC 1.5mm ² | Red/Black | Shoulder Wrap | 1 | 1 | 5759779019076 | £36.75 £43.18 |
|--------|-----|---|------------------------|-----------|---------------|---|---|---------------|----------------------|



715133

20 METRE 110V REEL

| | | | | | | | | | |
|--------|-----|---|------------------------|--------------|--|---|---|---------------|----------------------|
| 715133 | 16A | 2 | PVC 1.5mm ² | Yellow/Black | | 2 | 1 | 5759779004881 | £27.56 £32.38 |
|--------|-----|---|------------------------|--------------|--|---|---|---------------|----------------------|



Open Cable Reels



| Product Code | Current Rating | No. sockets | Insulated Cable (3 core) | Product Colour | Packaging Style | Pack Qty | Min Order | Barcode | Suggested Retail Price Each (ex VAT) (Inc. VAT) |
|--------------|----------------|-------------|--------------------------|----------------|-----------------|----------|-----------|---------|---|
|--------------|----------------|-------------|--------------------------|----------------|-----------------|----------|-----------|---------|---|

20 METRE REEL

| | | | | | | | | | |
|--------|-----|---|-------------------------|-----------|------------|---|---|---------------|----------------------|
| 820047 | 13A | 2 | PVC 1.25mm ² | Red/Black | Cable Tidy | 2 | 2 | 5759779018864 | £14.69 £17.26 |
|--------|-----|---|-------------------------|-----------|------------|---|---|---------------|----------------------|

25 METRE REEL

| | | | | | | | | | |
|--------|-----|---|-------------------------|-----------|------------|---|---|---------------|----------------------|
| 820080 | 13A | 2 | PVC 1.25mm ² | Red/Black | Cable Tidy | 2 | 2 | 5759779017652 | £15.62 £18.35 |
|--------|-----|---|-------------------------|-----------|------------|---|---|---------------|----------------------|

20 METRE WITH CUT-OUT

| | | | | | | | | | |
|--------|-----|---|-------------------------|-----------|------------|---|---|---------------|----------------------|
| 820102 | 13A | 2 | PVC 1.25mm ² | Red/Black | Cable Tidy | 2 | 2 | 5759779019830 | £15.19 £17.85 |
|--------|-----|---|-------------------------|-----------|------------|---|---|---------------|----------------------|

25 METRE WITH CUT-OUT

| | | | | | | | | | |
|--------|-----|---|-------------------------|-----------|------------|---|---|---------------|----------------------|
| 706795 | 13A | 4 | PVC 1.25mm ² | Red/Black | Cable Tidy | 2 | 2 | 5759779019212 | £17.45 £20.51 |
|--------|-----|---|-------------------------|-----------|------------|---|---|---------------|----------------------|



706795

30 METRE REEL

| | | | | | | | | | |
|--------|-----|---|-------------------------|-----------|------------|---|---|---------------|----------------------|
| 820061 | 13A | 2 | PVC 1.25mm ² | Red/Black | Cable Tidy | 2 | 2 | 5759779018932 | £18.37 £21.59 |
|--------|-----|---|-------------------------|-----------|------------|---|---|---------------|----------------------|

30 METRE REEL WITH CUT-OUT

| | | | | | | | | | |
|--------|-----|---|-------------------------|-----------|------------|---|---|---------------|----------------------|
| 820105 | 13A | 2 | PVC 1.25mm ² | Red/Black | Cable Tidy | 2 | 2 | 5759779019861 | £18.87 £22.17 |
|--------|-----|---|-------------------------|-----------|------------|---|---|---------------|----------------------|



820061

40 METRE REEL

| | | | | | | | | | |
|--------|-----|---|-------------------------|-----------|------------|---|---|---------------|----------------------|
| 820051 | 13A | 2 | PVC 1.25mm ² | Red/Black | Cable Tidy | 2 | 2 | 5759779018888 | £22.05 £25.91 |
|--------|-----|---|-------------------------|-----------|------------|---|---|---------------|----------------------|

40 METRE WITH CUT-OUT

| | | | | | | | | | |
|--------|-----|---|-------------------------|-----------|------------|---|---|---------------|----------------------|
| 820103 | 13A | 2 | PVC 1.25mm ² | Red/Black | Cable Tidy | 2 | 2 | 5759779019847 | £22.55 £26.50 |
|--------|-----|---|-------------------------|-----------|------------|---|---|---------------|----------------------|

| | | | | | | | | | |
|--------|-----|---|-------------------------|-----------|------------|---|---|---------------|----------------------|
| 706801 | 13A | 4 | PVC 1.25mm ² | Red/Black | Cable Tidy | 1 | 1 | 5759779019274 | £23.89 £28.07 |
|--------|-----|---|-------------------------|-----------|------------|---|---|---------------|----------------------|



706801

50 METRE REEL

| | | | | | | | | | |
|--------|-----|---|------------------------|-----------|------------|---|---|---------------|----------------------|
| 820053 | 13A | 2 | PVC 1.5mm ² | Red/Black | Cable Tidy | 2 | 2 | 5759779018895 | £27.56 £32.38 |
|--------|-----|---|------------------------|-----------|------------|---|---|---------------|----------------------|

50 METRE REEL WITH CUT-OUT

| | | | | | | | | | |
|--------|-----|---|------------------------|-----------|------------|---|---|---------------|----------------------|
| 820104 | 13A | 2 | PVC 1.5mm ² | Red/Black | Cable Tidy | 2 | 2 | 5759779019854 | £28.06 £32.97 |
|--------|-----|---|------------------------|-----------|------------|---|---|---------------|----------------------|

| | | | | | | | | | |
|--------|-----|---|------------------------|-----------|------------|---|---|---------------|----------------------|
| 706803 | 13A | 4 | PVC 1.5mm ² | Red/Black | Cable Tidy | 1 | 1 | 5759779019298 | £29.41 £34.55 |
|--------|-----|---|------------------------|-----------|------------|---|---|---------------|----------------------|



820053

25 METRE 110V REEL

| | | | | | | | | | |
|--------|-----|---|------------------------|--------------|------------|---|---|---------------|----------------------|
| 820006 | 16A | 2 | PVC 1.5mm ² | Yellow/Black | Cable Tidy | 2 | 2 | 5759779018178 | £27.56 £32.38 |
|--------|-----|---|------------------------|--------------|------------|---|---|---------------|----------------------|

40 METRE 110V REEL

| | | | | | | | | | |
|--------|-----|---|------------------------|--------------|------------|---|---|---------------|----------------------|
| 820075 | 16A | 2 | PVC 2.5mm ² | Yellow/Black | Cable Tidy | 1 | 1 | 5759779019427 | £45.94 £53.98 |
|--------|-----|---|------------------------|--------------|------------|---|---|---------------|----------------------|

25 METRE 110V REEL WITH CUT-OUT

| | | | | | | | | | |
|--------|-----|---|------------------------|--------------|------------|---|---|---------------|----------------------|
| 820091 | 16A | 2 | PVC 1.5mm ² | Yellow/Black | Cable Tidy | 2 | 2 | 7315880112747 | £28.06 £32.97 |
|--------|-----|---|------------------------|--------------|------------|---|---|---------------|----------------------|

40 METRE 110V REEL WITH CUT-OUT

| | | | | | | | | | |
|--------|-----|---|------------------------|--------------|------------|---|---|---------------|----------------------|
| 820092 | 16A | 2 | PVC 1.5mm ² | Yellow/Black | Cable Tidy | 1 | 1 | 7315880112754 | £46.44 £54.57 |
|--------|-----|---|------------------------|--------------|------------|---|---|---------------|----------------------|



820006



Extension Leads

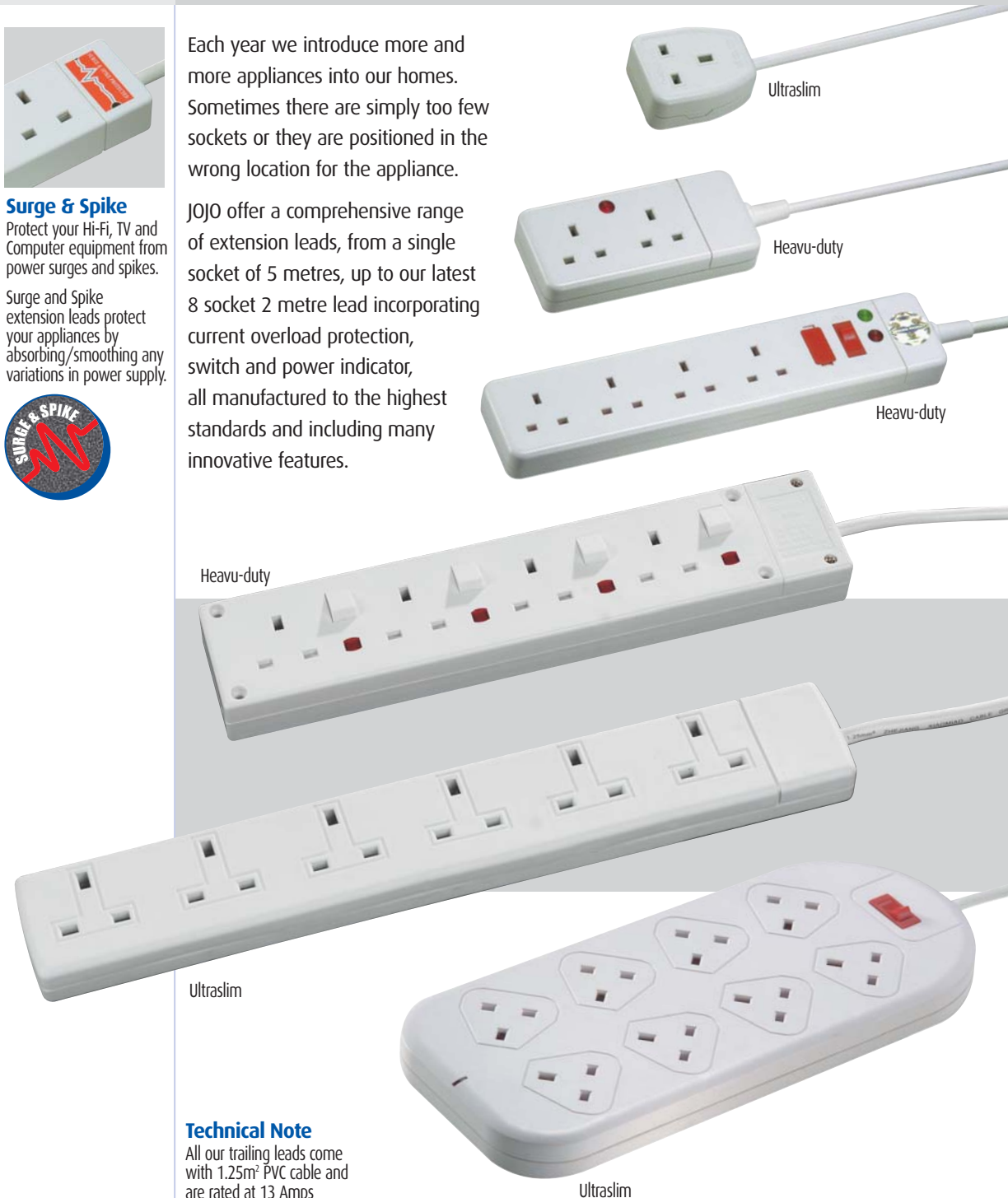


Surge & Spike
Protect your Hi-Fi, TV and Computer equipment from power surges and spikes. Surge and Spike extension leads protect your appliances by absorbing/smoothing any variations in power supply.



Each year we introduce more and more appliances into our homes. Sometimes there are simply too few sockets or they are positioned in the wrong location for the appliance.

JOJO offer a comprehensive range of extension leads, from a single socket of 5 metres, up to our latest 8 socket 2 metre lead incorporating current overload protection, switch and power indicator, all manufactured to the highest standards and including many innovative features.



Heavu-duty

Ultraslim

Ultraslim

Technical Note
All our trailing leads come with 1.25m² PVC cable and are rated at 13 Amps

Trailing Leads



| Product Code | Cable Length | Description | Additional Features | Product Colour | Packaging Style | Carton Style | Pack Qty | Min Order | Barcode | Suggested Retail Price Each (ex VAT) (inc. VAT) |
|--------------|--------------|-------------|---------------------|----------------|-----------------|--------------|----------|-----------|---------|---|
|--------------|--------------|-------------|---------------------|----------------|-----------------|--------------|----------|-----------|---------|---|

1 SOCKET LEADS

| | | | | | | | | | | |
|--------|-----|-----------|------------|--------|-------------|-------|----|---|---------------|---------------------|
| 400250 | 5M | Ultraslim | | White | Hanging Bag | Plain | 10 | 1 | 5015125991053 | £5.51 £6.47 |
| 400255 | 10M | Ultraslim | | White | Hanging Bag | Plain | 10 | 1 | 5015125991060 | £7.34 £8.63 |
| 400260 | 15M | H-Frame | Cable Tidy | Orange | Polywrap | Plain | 5 | 1 | 5015125991077 | £9.18 £10.79 |

2 SOCKET LEADS

| | | | | | | | | | | |
|--------|----|----------------------|--|-------|-------------|-------|----|---|---------------|--------------------|
| 400321 | 2M | Heavy-duty with Neon | | White | Clam | Plain | 1 | 1 | 5015125992890 | £4.85 £5.70 |
| 400265 | 4M | Ultraslim | | White | Hanging Bag | Plain | 1 | 1 | 5015125991084 | £5.04 £5.93 |
| 400267 | 4M | Ultraslim | | White | Clam | Plain | 10 | 1 | 5015125992616 | £6.95 £8.17 |

2 SOCKET LEADS

| | | | | | | | | | | |
|--------|-----|---------------------------|--|--------|-------------|-------|----|---|---------------|--------------------|
| 400270 | 5M | Heavy-duty Neon, Kitemark | | White | Clam | Plain | 10 | 1 | 5015125991091 | £5.78 £6.79 |
| 400275 | 10M | Ultraslim | | Orange | Hanging Bag | Plain | 10 | 1 | 5015125991107 | £8.25 £9.70 |
| 400336 | 10M | Ultraslim | | White | Clam | Plain | 10 | 1 | 5015125992722 | £6.95 £8.17 |

4 SOCKET LEADS

| | | | | | | | | | | |
|--------|----|-----------|-------------|-------|-------------|---------|----|----|---------------|--------------------|
| 400285 | 1M | Ultraslim | | White | Hanging Bag | Display | 30 | 30 | 5015125991121 | £2.11 £2.47 |
| 400290 | 1M | Ultraslim | Twin Pack | White | Hanging Bag | Display | 15 | 15 | 5015125991138 | £4.59 £5.39 |
| 400295 | 1M | Ultraslim | Triple Pack | White | Hanging Bag | Display | 10 | 10 | 5015125991145 | £6.06 £7.12 |
| 400300 | 1M | Ultraslim | Triple Pack | White | Printed Box | Plain | 30 | 1 | 5015125991152 | £6.70 £7.87 |



Trailing Leads

| Product Code | Cable Length | Description | Additional Features | Product Colour | Packaging Style | Carton Style | Pack Qty | Min Order | Barcode | Suggested Retail Price Each (ex VAT) (inc. VAT) |
|--------------|--------------|-------------|---------------------|----------------|-----------------|--------------|----------|-----------|---------|---|
|--------------|--------------|-------------|---------------------|----------------|-----------------|--------------|----------|-----------|---------|---|

4 SOCKET LEADS

| | | | | | | | | | | |
|--------|-----|----------------------------|--|-------|-------------|---------|----|----|---------------|----------------------|
| 400305 | 2M | Ultraslim | | White | Hanging Bag | Display | 30 | 30 | 5015125991169 | £2.29 £2.69 |
| 400307 | 2M | Ultraslim | | White | Clam | Display | 1 | 1 | 5015125992609 | £4.43 £5.20 |
| 400310 | 3M | Ultraslim | | White | Hanging Bag | Plain | 30 | 1 | 5015125991176 | £3.21 £3.77 |
| 400315 | 5M | Ultraslim | | White | Hanging Bag | Plain | 25 | 1 | 5015125991183 | £4.59 £5.39 |
| 400337 | 10M | Slimline with 13A RCD Plug | | White | Hanging Bag | Display | 1 | 1 | | £31.61 £37.14 |

4 SOCKET SWITCHED LEADS

| | | | | | | | | | | |
|--------|----|---|--|-------|------|-------|----|---|---------------|----------------------|
| 400320 | 2M | Heavy-duty Switch, Fuse, Neon | | White | Clam | Plain | 10 | 1 | 5015125991190 | £9.18 £10.79 |
| 400325 | 2M | Heavy-duty Individually Switched & Neon | | White | Clam | Plain | 10 | 1 | 5015125991206 | £10.56 £12.41 |
| 400324 | 5M | Heavy-duty Switch, Fuse, Neon | | White | Clam | Plain | 10 | 1 | 5015125992791 | £8.85 £10.40 |
| 400328 | 2M | Heavy-duty Switch, Fuse, Neon | | Black | Clam | Plain | 10 | 1 | 5015125992784 | £7.80 £9.16 |
| 400332 | 5M | Heavy-duty Individually Switched & Neon | | White | Clam | Plain | 10 | 1 | 5015125992807 | £14.96 £17.58 |

4 SOCKET LEADS - SURGE & SPIKE

| | | | | | | | | | | |
|--------|----|-----------|--|-------|------------|-------|----|---|---------------|----------------------|
| 400335 | 1M | Ultraslim | | White | Clam | Plain | 10 | 1 | 5015125991220 | £5.51 £6.47 |
| 400340 | 1M | Ultraslim | | White | Twin Box | Plain | 10 | 1 | 5015125991237 | £10.10 £11.87 |
| 400350 | 1M | Ultraslim | | White | Triple Box | Plain | 10 | 1 | 5015125991251 | £15.62 £18.35 |

4 SOCKET LEADS - SURGE & SPIKE

| | | | | | | | | | | |
|--------|----|--|--|-------|------|-------|----|---|---------------|---------------------|
| 400355 | 2M | Ultraslim | | White | Clam | Plain | 10 | 1 | 5015125991268 | £7.34 £8.63 |
| 400338 | 2M | Slimline with Surge Indicator | | White | Clam | Plain | 1 | 1 | 5015125992814 | £7.59 £8.91 |
| 400338 | 2M | Heavy-duty, Switch, Fuse, Neon with RFI Filter | | White | Clam | Plain | 1 | 1 | 5015125992821 | £8.96 £10.52 |

Trailing Leads



| Product Code | Cable Length | Description | Additional Features | Product Colour | Packaging Style | Carton Style | Pack Qty | Min Order | Barcode | Suggested Retail Price Each (ex VAT) (inc. VAT) |
|--------------|--------------|-------------|---------------------|----------------|-----------------|--------------|----------|-----------|---------|---|
|--------------|--------------|-------------|---------------------|----------------|-----------------|--------------|----------|-----------|---------|---|

6 SOCKET LEADS

| | | | | | | | | | | |
|--------|----|--|--|-------|-------------|---------|----|---|----------------|----------------------|
| 400360 | 1M | Ultraslim | | White | Hanging Bag | Display | 20 | 1 | 5015125991275 | £3.67 £4.31 |
| 400443 | 2M | Ultraslim | | White | Clam | Display | 1 | 1 | 5015125992883 | £3.69 £4.33 |
| 400365 | 3M | Ultraslim | | White | Hanging Bag | Plain | 20 | 1 | 5015125991282 | £4.59 £5.39 |
| 400284 | 5M | Heavy-duty Switch, Fuse, Neon | | White | Clam | Plain | 1 | 1 | 5015125992838 | £13.52 £15.89 |
| 400329 | 2M | Heavy-duty Switch, Fuse, Neon | | White | Clam | Plain | 1 | 1 | | £10.54 £12.38 |
| 400334 | 2M | Heavy-duty Individually Switched Fuse and Neon | | White | Clam | Plain | 1 | 1 | | £12.47 £14.65 |
| 400341 | 5M | Heavy-duty Switch, Fuse, Neon | | White | Clam | Plain | 1 | 1 | 50151259922845 | £13.87 £16.30 |

6 SOCKET LEADS - SURGE & SPIKE

| | | | | | | | | | | |
|--------|----|-----------|--|-------|------|-------|----|---|---------------|--------------------|
| 400375 | 1M | Ultraslim | | White | Clam | Plain | 10 | 1 | 5015125991305 | £6.43 £7.55 |
| 400385 | 2M | Ultraslim | | White | Clam | Plain | 10 | 1 | 5015125991312 | £7.34 £8.63 |

6 SOCKET LEADS - SURGE & SPIKE

| | | | | | | | | | | |
|--------|----|---|--|-------|------|-------|----|---|---------------|----------------------|
| 400441 | 2M | Slimline with Surge Indicator | | White | Clam | Plain | 10 | 1 | 5015125992852 | £9.06 £10.65 |
| 400380 | 2M | Heavy-duty Switch, Modem, Co-Axial, Leads | | White | Clam | Plain | 10 | 1 | 5015125991329 | £21.14 £24.83 |
| 400442 | 2M | Heavy-duty, Switch, Fuse Neon with RFI Filter | | White | Clam | Plain | 1 | 1 | 5015125992869 | £11.94 £14.03 |

8 SOCKET LEAD

| | | | | | | | | | | |
|--------|----|----------------------------------|--|-------|------|-------|----|---|---------------|----------------------|
| 400390 | 2M | Heavy Duty Cut Out, Switch, Neon | | White | Clam | Plain | 10 | 1 | 5015125991336 | £12.86 £15.11 |
|--------|----|----------------------------------|--|-------|------|-------|----|---|---------------|----------------------|



Plugs & Adaptors

Plugs & Adaptors



'Rugby' Plug and Socket Protector

Stop plugs and sockets from becoming detached.

Tamper proof locks prevent accidental opening of the shroud.



SALES HOTLINE 01254 263501

| Product Code | Description | Product Colour | Packaging Style | Pack Qty | Min Order | Barcode | Suggested retail Price Each (ex. VAT) (inc. VAT) | |
|--|---|----------------|-----------------|----------|-----------|---------------|--|---------------|
| PLUGS | | | | | | | | |
| 400101 | 13A 3 Pin Plastic | White | Hanging Pack | 1 | 1 | 5702124001011 | £0.64 | £0.75 |
| 400102 | 13A 3 Pin Plastic | White | Retail Box | 20 | 20 | 5702124001028 | £0.57 | £0.67 |
| 400216 | 13A 3 Pin Plastic | Black | Retail Box | 20 | 20 | 5702124002162 | £0.64 | £0.75 |
| HEAVY DUTY PLUGS | | | | | | | | |
| 400455 | 13A 3 Pin Rubberised | White | Hanging Pack | 1 | 1 | 5015125991367 | £1.37 | £1.61 |
| 400103 | 13A 3 Pin Rubberised | Black | Hanging Pack | 1 | 1 | 5702124001035 | £1.37 | £1.61 |
| 400104 | 13A 3 Pin Rubberised | Orange | Hanging Pack | 1 | 1 | 5072124001042 | £1.37 | £1.61 |
| 2 & 3 WAY PLUG ADAPTORS | | | | | | | | |
| 400105 | 13A 2 Way adaptor | White | Hanging Pack | 1 | 1 | 5702124001059 | £1.37 | £1.61 |
| 400217 | 13A 2 way adaptor | White | Retail Box | 10 | 10 | 5702124002179 | £0.91 | £1.07 |
| 400106 | 13A 3 Way fused adaptor | White | Hanging Pack | 1 | 1 | 5702124001066 | £2.29 | £2.69 |
| 400218 | 13A 3 Way fused adaptor | White | Retail Box | 10 | 10 | 5702124002186 | £1.83 | £2.14 |
| ADAPTORS | | | | | | | | |
| 400107 | Shaver adaptor | White | Hanging Pack | 1 | 1 | 5702124001073 | £1.37 | £1.61 |
| 400525 | UK travel adaptor | White | Hanging Pack | 1 | 1 | 5015125991503 | £2.29 | £2.69 |
| 400530 | Overseas travel adaptor | White | Hanging Pack | 1 | 1 | 5015125991510 | £2.74 | £3.22 |
| 1 SOCKET - UNWIRED | | | | | | | | |
| 400535 | 13A Ultraslim | White | Retail Box | 10 | 10 | 5015125991527 | £0.91 | £1.07 |
| 400110 | 13A Heavy Duty Rubberised | Orange | Hanging Pack | 1 | 1 | 5702124001103 | £1.83 | £2.14 |
| 400111 | 13A Heavy Duty Rubberised | Black | Hanging Pack | 1 | 1 | 5702124001110 | £1.83 | £2.14 |
| 400550 | 13A Heavy Duty Rubberised | White | Hanging Pack | 1 | 1 | 5015125991558 | £1.83 | £2.14 |
| 2 SOCKETS - UNWIRED | | | | | | | | |
| 400460 | 13A Heavy Duty with Neon | White | Hanging Pack | 1 | 1 | 5015125991374 | £1.64 | £1.93 |
| 400555 | 13A Heavy Duty Rubberised | White | Hanging Pack | 1 | 1 | 5015125991565 | £3.21 | £3.77 |
| 400560 | 13A Heavy Duty Rubberised | Black | Hanging Pack | 1 | 1 | 5015125991572 | £3.21 | £3.77 |
| 4 SOCKETS - UNWIRED | | | | | | | | |
| 400470 | 13A Heavy Duty Switch, Fuse & Neon | White | Hanging Pack | 1 | 1 | 5015125991398 | £4.59 | £5.39 |
| 400444 | 13A Heavy Duty Switch, Fuse & Neon | Black | Hanging Pack | 1 | 1 | 5015125992777 | £4.92 | £5.78 |
| 400331 | 13A Heavy Duty Individually Switched Neon & Cut-Out | White | Hanging Pack | 1 | 1 | | £9.48 | £11.14 |
| 6 SOCKETS - UNWIRED | | | | | | | | |
| 400465 | 13A Heavy Duty, Switch, Fuse, Neon | White | Hanging Pack | 1 | 1 | 5015125991381 | £9.18 | £10.79 |
| 400333 | 13A Heavy Duty, Individually Switched Fuse & neon | White | Hanging Pack | 1 | 1 | 5015125992290 | £10.89 | £12.79 |
| 8 SOCKETS - UNWIRED | | | | | | | | |
| 400286 | 13A Heavy Duty, Switch, Neon 7 Cut-Out | White | Hanging Pack | 1 | 1 | 5015125992876 | £10.61 | £12.46 |
| 10 AMP PLUG & SOCKETS | | | | | | | | |
| 400079 | 2 Pin plug & socket | Orange | Hanging Pack | 5 | 1 | 5702124000793 | £2.74 | £3.22 |
| 400080 | 3 Pin plug & socket | Black | Hanging Pack | 5 | 1 | 5702124000809 | £3.21 | £3.77 |
| 13 AMP PLUG TO 2 PIN CONNECTORS | | | | | | | | |
| 400024 | In-line connector, | Orange | Hanging Pack | 5 | 1 | 5702124000243 | £9.18 | £10.79 |
| 400025 | Splashproof socket, | Orange | Hanging Pack | 5 | 1 | 5702124000250 | £8.26 | £9.71 |
| PLUG & SOCKET PROTECTOR | | | | | | | | |
| 917001 | 'Rugby' socket protector | Red | Hanging Pack | 1 | 1 | 5015125983270 | £4.59 | £5.39 |



Electrical Wiring Accessories

JOJO wiring accessories are designed and manufactured to exceed U.K. and European standards.

They are supplied with easy to follow instructions in distinctive JOJO hanging presentation packs.

The most popular lines are offered in shelf-ready presentation boxes with each product individually bar coded for your convenience.



Retail Box



Hanging Pack

Power Sockets & Switches

| Product Code | Description | Product Colour | Packaging Style | Pack Qty | Min Order | Barcode | Suggested retail Price Each (ex VAT) (inc. VAT) | |
|--------------|-------------|----------------|-----------------|----------|-----------|---------|---|--|
|--------------|-------------|----------------|-----------------|----------|-----------|---------|---|--|

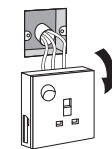
1 GANG SOCKETS

| | | | | | | | | |
|--------|-------------------|--|--------------|----|----|---------------|-------|--------------|
| 400475 | 1 gang Unswitched | | Retail box | 5 | 5 | 5015125991404 | £1.27 | £1.50 |
| 400038 | 1 gang Switched | | Hanging Pack | 1 | 1 | 5702124000380 | £1.92 | £2.26 |
| 400203 | 1 gang Switched | | Retail box | 10 | 10 | 5702124002032 | £1.64 | £1.93 |



2 GANG SOCKETS

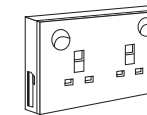
| | | | | | | | | |
|--------|-------------------|--|--------------|---|---|---------------|-------|--------------|
| 400480 | 2 gang Unswitched | | Retail box | 5 | 5 | 5015125991411 | £2.19 | £2.58 |
| 400039 | 2 gang Switched | | Hanging pack | 1 | 1 | 5702124000397 | £2.66 | £3.12 |
| 400204 | 2 gang Switched | | Retail box | 5 | 5 | 5702144002049 | £2.11 | £2.47 |



1. Remove single socket



2. Connect socket converter and refit



'CONVERTA' SOCKETS

| | | | | | | | | |
|--------|--------------------------------|--|--------------|---|---|---------------|--------|---------------|
| 400220 | 1 to 2 gang 'Clipsal' Switched | | Hanging pack | 1 | 1 | 5702124002209 | £8.73 | £10.25 |
| 400221 | 2 to 3 gang 'Clipsal' Switched | | Hanging pack | 1 | 1 | 5702124002216 | £13.78 | £16.19 |



FUSED CONNECTION UNITS

| | | | | | | | | |
|--------|------------------------|--|--------------|----|----|---------------|-------|--------------|
| 400040 | 13A Unswitched | | Hanging pack | 1 | 1 | 5702124000403 | £3.12 | £3.67 |
| 400495 | 13A Unswitched | | Retail box | 10 | 10 | 5015125991459 | £2.84 | £3.34 |
| 400041 | 13A Switched | | Hanging pack | 1 | 1 | 5702124000410 | £4.22 | £4.96 |
| 400205 | 13A Switched | | Retail box | 10 | 10 | 5702124002056 | £4.13 | £4.85 |
| 400046 | 13A Switched with Neon | | Hanging pack | 1 | 1 | 5015125991435 | £4.77 | £5.61 |
| 400500 | 13A Switched with Neon | | Retail box | 5 | 5 | 5015125991459 | £4.59 | £5.39 |



DOUBLE POLE SWITCHES

| | | | | | | | | |
|--------|------------------------|--|--------------|---|---|---------------|-------|--------------|
| 400042 | 20A Switched with neon | | Hanging pack | 1 | 1 | 5702124000427 | £4.04 | £4.75 |
| 400565 | 20A Switched with neon | | Retail box | 5 | 5 | 5015125991589 | £3.21 | £3.77 |
| 400570 | 30A Switched with neon | | Hanging pack | 1 | 1 | 5015125991596 | £6.43 | £7.55 |
| 400043 | 45A Switched with neon | | Hanging pack | 1 | 1 | 5702124000434 | £6.98 | £8.20 |
| 400575 | 45A Switched with neon | | Retail box | 5 | 5 | 5015125991602 | £6.70 | £7.87 |



COOKER ACCESSORIES

| | | | | | | | | |
|--------|---------------------|--|--------------|---|---|---------------|--------|---------------|
| 400045 | 45A Cooker control | | Hanging pack | 1 | 1 | 5702124000458 | £12.86 | £15.11 |
| 400585 | 45A Cooker control | | Retail box | 5 | 5 | 5015125991626 | £12.58 | £14.78 |
| 400590 | Cooker outlet plate | | Hanging pack | 1 | 1 | 5015125991633 | £7.81 | £9.17 |





Lighting Accessories

| Product Code | Description | Product Colour | Packaging Style | Pack Qty | Min Order | Barcode | Suggested retail Price Each (ex VAT) | (inc. VAT) |
|--------------|-------------|----------------|-----------------|----------|-----------|---------|--------------------------------------|------------|
|--------------|-------------|----------------|-----------------|----------|-----------|---------|--------------------------------------|------------|



DOUBLE POLE CEILING SWITCH

| | | | | | | | | |
|--------|---------------|-------|--------------|---|---|---------------|-------|--------------|
| 400044 | 45A with neon | White | Hanging pack | 1 | 1 | 5702124000441 | £8.26 | £9.71 |
| 400580 | 45A with neon | White | Retail box | 5 | 5 | 5015125991619 | £8.18 | £9.61 |



SHAVER SOCKET

| | | | | | | | | |
|--------|--------------------------|-------|--------------|---|---|---------------|--------|---------------|
| 400595 | Dual voltage shaver unit | White | Hanging pack | 1 | 1 | 5015125991640 | £26.64 | £31.31 |
|--------|--------------------------|-------|--------------|---|---|---------------|--------|---------------|



CEILING ROSE

| | | | | | | | | |
|--------|--------------|-------|--------------|---|---|---------------|-------|--------------|
| 400047 | Ceiling rose | White | Hanging pack | 1 | 1 | 5702124000472 | £1.27 | £1.50 |
| 400600 | Ceiling rose | White | Retail box | 5 | 5 | 5015125991657 | £1.09 | £1.28 |



PENDANT SETS

| | | | | | | | | |
|--------|---------------------|-------|--------------|---|---|---------------|-------|--------------|
| 400048 | 100W max 150mm drop | White | Hanging pack | 1 | 1 | 5702124000489 | £3.12 | £3.67 |
| 400206 | 100W max 150mm drop | White | Retail box | 5 | 5 | 5702124002063 | £2.84 | £3.34 |
| 400605 | 100W max 225mm drop | White | Hanging pack | 1 | 1 | 5015125991664 | £2.93 | £3.44 |



CORDGRIP LAMP HOLDER

| | | | | | | | | |
|--------|----------|-------|--------------|----|----|---------------|-------|--------------|
| 400049 | 100W max | White | Hanging pack | 1 | 1 | 5702124000496 | £0.82 | £0.96 |
| 400207 | 100W max | White | Retail box | 10 | 10 | 5702124002070 | £0.72 | £0.85 |



BATTEN LAMPHOLDERS

| | | | | | | | | |
|--------|---------------------------------|-------|--------------|----|----|---------------|-------|--------------|
| 400050 | with HO skirt Straight | White | Hanging pack | 1 | 1 | 5702124000502 | £1.37 | £1.61 |
| 400610 | with HO skirt Straight | White | Retail box | 10 | 10 | 5015125991671 | £1.00 | £1.18 |
| 400620 | Angled lampholder with HO skirt | White | Hanging pack | 1 | 1 | 5015125991695 | £1.64 | £1.93 |



JUNCTION BOXES

| | | | | | | | | |
|--------|-----|-------|--------------|----|----|---------------|-------|--------------|
| 400051 | 5A | White | Hanging pack | 1 | 1 | 5702124000519 | £1.09 | £1.28 |
| 400052 | 20A | White | Hanging pack | 10 | 10 | 5702124000526 | £1.64 | £1.93 |
| 400625 | 20A | White | Retail box | 1 | 1 | 5015125991701 | £0.82 | £0.96 |
| 400053 | 30A | White | Hanging pack | 10 | 10 | 5702124000533 | £1.83 | £2.14 |
| 400630 | 30A | White | Retail box | 1 | 1 | 5015125991718 | £0.91 | £1.07 |
| 400635 | 30A | Brown | Retail box | 10 | 10 | 5015125991725 | £0.91 | £1.07 |

Lighting Switches

| Product Code | Description | Product Colour | Packaging Style | Pack Qty | Min Order | Barcode | Suggested retail Price Each (ex VAT) | (inc. VAT) |
|--------------|-------------|----------------|-----------------|----------|-----------|---------|--------------------------------------|------------|
|--------------|-------------|----------------|-----------------|----------|-----------|---------|--------------------------------------|------------|

1 GANG 1 WAY LIGHT SWITCHES

| | | | | | | | | |
|--------|--|-------|--------------|----|----|---------------|-------|--------------|
| 400054 | | White | Hanging pack | 1 | 1 | 5702124000540 | £1.19 | £1.40 |
| 400208 | | White | Retail box | 10 | 10 | 5702124002087 | £0.72 | £0.85 |

1 GANG 2 WAY LIGHT SWITCHES

| | | | | | | | | |
|--------|--|-------|--------------|----|----|---------------|-------|--------------|
| 400055 | | White | Hanging pack | 1 | 1 | 5702124000557 | £1.46 | £1.71 |
| 400209 | | White | Retail box | 10 | 10 | 5702124002094 | £0.82 | £0.96 |



2 GANG 2 WAY LIGHT SWITCHES

| | | | | | | | | |
|--------|--|-------|--------------|----|----|---------------|-------|--------------|
| 400056 | | White | Hanging pack | 1 | 1 | 5702124000564 | £1.92 | £2.26 |
| 400210 | | White | Retail box | 10 | 10 | 5702124002100 | £1.46 | £1.71 |

3 GANG 2 WAY LIGHT SWITCHES

| | | | | | | | | |
|--------|--|-------|--------------|---|---|---------------|-------|--------------|
| 400057 | | White | Hanging pack | 1 | 1 | 5702124000571 | £3.02 | £3.55 |
| 400640 | | White | Retail box | 5 | 5 | 5015125991732 | £2.38 | £2.79 |



1 WAY CEILING SWITCHES

| | | | | | | | | |
|--------|----|-------|--------------|----|----|---------------|-------|--------------|
| 400058 | 6A | White | Hanging pack | 1 | 1 | 5702124000588 | £2.56 | £3.01 |
| 400645 | 6A | White | Retail box | 10 | 10 | 5015125991748 | £2.01 | £2.36 |

2 WAY CEILING SWITCHES

| | | | | | | | | |
|--------|----|-------|--------------|---|---|---------------|-------|--------------|
| 400059 | 6A | White | Hanging pack | 1 | 1 | 5702124000595 | £3.02 | £3.55 |
| 400650 | 6A | White | Retail box | 5 | 5 | 5015125991756 | £2.29 | £2.69 |



1 GANG ROTARY DIMMER SWITCHES

| | | | | | | | | |
|--------|------------|-------|--------------|---|---|---------------|-------|--------------|
| 400655 | 250W 1 Way | White | Hanging pack | 1 | 1 | 5015125991763 | £1.09 | £1.28 |
| 400061 | 400W 1 Way | White | Hanging pack | 1 | 1 | 5702124000618 | £1.64 | £1.93 |

1 GANG PUSH ON/OFF DIMMER SWITCH

| | | | | | | | | |
|--------|------------|-------|--------------|---|---|---------------|-------|---------------|
| 400062 | 400W 2 Way | White | Hanging pack | 1 | 1 | 5702124000625 | £8.54 | £10.04 |
|--------|------------|-------|--------------|---|---|---------------|-------|---------------|



2 GANG ROTARY DIMMER SWITCH

| | | | | | | | | |
|--------|----------------|-------|--------------|---|---|---------------|--------|---------------|
| 400660 | 2 X 250W 1 Way | White | Hanging pack | 1 | 1 | 5015125991770 | £12.68 | £14.90 |
|--------|----------------|-------|--------------|---|---|---------------|--------|---------------|

2 GANG PUSH ON/OFF DIMMER SWITCH

| | | | | | | | | |
|--------|----------------|-------|--------------|---|---|---------------|--------|---------------|
| 400063 | 2 X 250W 2 Way | White | Hanging pack | 1 | 1 | 5702124000632 | £15.15 | £17.80 |
|--------|----------------|-------|--------------|---|---|---------------|--------|---------------|



LIGHTSWITCH SURROUNDS

| | | | | | | | | |
|--------|---------------|-------|--------------|---|---|---------------|-------|--------------|
| 400131 | 'Fingerplate' | White | Hanging pack | 1 | 1 | 5702124001318 | £3.23 | £3.79 |
| 400132 | 'Fingerplate' | Clear | Hanging pack | 1 | 1 | 5702124001235 | £3.23 | £3.79 |



COAXIAL TV SOCKET

| | | | | | | | | |
|--------|--------|-------|--------------|---|---|---------------|-------|--------------|
| 400077 | 1 Gang | White | Hanging pack | 1 | 1 | 5702124000779 | £2.11 | £2.47 |
|--------|--------|-------|--------------|---|---|---------------|-------|--------------|





Mounting Boxes

| Product Code | Description | Product Colour | Packaging Style | Pack Qty | Min Order | Barcode | Suggested retail Price Each (ex VAT) (inc. VAT) |
|--------------|-------------|----------------|-----------------|----------|-----------|---------|---|
|--------------|-------------|----------------|-----------------|----------|-----------|---------|---|



METAL CLAD SWITCHED SOCKETS

| | | | | | | | |
|--------|---------------|-------|--------------|---|---|---------------|---------------------|
| 400675 | 1 gang socket | Steel | Hanging pack | 1 | 1 | 5015125991800 | £6.06 £7.12 |
| 400680 | 2 gang socket | Steel | Hanging pack | 1 | 1 | 5015125991817 | £8.81 £10.36 |



METAL CLAD SWITCHED LIGHTSWITCHES

| | | | | | | | |
|--------|--------------------------|-------|--------------|---|---|---------------|--------------------|
| 400685 | 1 gang 2 way lightswitch | Steel | Hanging pack | 1 | 1 | 5015125991824 | £5.32 £6.26 |
| 400690 | 2 gang 2 way lightswitch | Steel | Hanging pack | 1 | 1 | 5015125991831 | £6.33 £7.44 |



1 GANG MOUNTING BOXES

| | | | | | | | |
|--------|-----------------------|-------|--------------|----|----|---------------|--------------------|
| 400064 | 16mm Surface pattress | White | Hanging pack | 1 | 1 | 5702124000649 | £0.91 £1.07 |
| 400211 | 16mm Surface pattress | White | Retail box | 10 | 10 | 5702124002117 | £0.54 £0.63 |
| 400065 | 25mm Surface pattress | White | Hanging pack | 1 | 1 | 5702124000656 | £1.00 £1.18 |
| 400212 | 25mm Surface pattress | White | Retail box | 10 | 10 | 5702124002124 | £0.59 £0.70 |
| 400066 | 47mm Surface pattress | White | Hanging pack | 1 | 1 | 5702124000663 | £1.27 £1.50 |
| 400665 | 47mm Surface pattress | White | Retail box | 5 | 5 | 5015125991787 | £1.09 £1.28 |



2 GANG MOUNTING BOXES

| | | | | | | | |
|--------|-----------------------|-------|--------------|---|---|---------------|--------------------|
| 400067 | 25mm Surface pattress | White | Hanging pack | 1 | 1 | 5702124000670 | £1.64 £1.93 |
| 400213 | 25mm Surface pattress | White | Retail box | 5 | 5 | 5702124002131 | £1.00 £1.18 |
| 400670 | 47mm Surface pattress | White | Hanging pack | 5 | 5 | 5015125991794 | £1.37 £1.61 |



1 GANG CAVITY WALL BOXES

| | | | | | | | |
|--------|--|-------|--------------|----|----|---------------|--------------------|
| 400069 | | White | Hanging pack | 1 | 1 | 5702124000694 | £0.91 £1.07 |
| 400214 | | White | Retail box | 10 | 10 | 5702124002148 | £0.59 £0.70 |

2 GANG CAVITY WALL BOXES

| | | | | | | | |
|--------|--|-------|--------------|----|----|---------------|--------------------|
| 400070 | | White | Hanging pack | 1 | 1 | 5702124000700 | £1.64 £1.93 |
| 400215 | | White | Retail box | 10 | 10 | 5702124002155 | £1.00 £1.18 |



1 GANG METAL MOUNTING BOXES

| | | | | | | | |
|--------|------|-------|------------|----|----|---------------|--------------------|
| 400071 | 16mm | Galv. | Trade pack | 20 | 20 | 5702124000717 | £0.91 £1.07 |
| 400072 | 25mm | Galv. | Trade pack | 10 | 10 | 5702124000724 | £0.91 £1.07 |
| 400073 | 35mm | Galv. | Trade pack | 10 | 10 | 5702124000731 | £1.19 £1.40 |
| 400965 | 47mm | Galv. | Trade pack | 10 | 10 | 5015125992398 | £2.19 £2.58 |



2 GANG METAL MOUNTING BOXES

| | | | | | | | |
|--------|------|-------|------------|----|----|---------------|--------------------|
| 400074 | 25mm | Galv. | Trade pack | 10 | 10 | 5702124000748 | £1.00 £1.18 |
| 400075 | 35mm | Galv. | Trade pack | 10 | 10 | 5702124000755 | £1.27 £1.50 |
| 400076 | 47mm | Galv. | Trade pack | 5 | 5 | 5702124000762 | £2.29 £2.69 |

Connectors, Tape & Ties

| Product Code | Description | Product Colour | Packaging Style | Pack Qty | Min Order | Barcode | Suggested retail Price Each (ex VAT) (inc. VAT) |
|--------------|-------------|----------------|-----------------|----------|-----------|---------|---|
|--------------|-------------|----------------|-----------------|----------|-----------|---------|---|

BLANKING PLATES

| | | | | | | | |
|--------|--------|-------|------------|----|----|---------------|--------------------|
| 400870 | 1 gang | White | Retail box | 10 | 10 | 5015125992197 | £0.64 £0.75 |
| 400875 | 2 gang | White | Retail box | 10 | 10 | 5015125992203 | £1.19 £1.40 |



CONNECTORS

| | | | | | | | |
|--------|--------------------------|-------|--------------|----|----|---------------|--------------------|
| 400078 | 5A 2 terminal connector | White | Hanging Pack | 1 | 1 | 5702124000786 | £0.69 £0.81 |
| 400081 | 13A 3 terminal connector | White | Hanging Pack | 1 | 1 | 5702124000847 | £0.82 £0.96 |
| 400695 | 13A 3 terminal connector | White | Retail box | 20 | 20 | 5015125991848 | £1.27 £1.50 |



TERMINAL BLOCKS

| | | | | | | | |
|--------|-----------|-------|--------------|---|---|---------------|--------------------|
| 400082 | 5A 6 way | White | Hanging Pack | 1 | 1 | 5702124000823 | £0.69 £0.81 |
| 400083 | 15A 6 way | White | Hanging Pack | 1 | 1 | 5702124000830 | £0.82 £0.96 |
| 400084 | 30A 6 way | White | Hanging Pack | 1 | 1 | 5702124000847 | £1.27 £1.50 |



10 METRE INSULATION TAPE

| | | | | | | | |
|--------|---------------------|---------|--------------|---|---|---------------|--------------------|
| 400700 | PVC Insulation tape | White | Hanging Pack | 1 | 1 | 5015125991855 | £0.69 £0.81 |
| 400705 | PVC Insulation tape | Black | Hanging Pack | 1 | 1 | 5015125991862 | £0.69 £0.81 |
| 400710 | PVC Insulation tape | Red | Hanging Pack | 1 | 1 | 5015125991879 | £0.69 £0.81 |
| 400715 | PVC Insulation tape | Gr/Yell | Hanging Pack | 1 | 1 | 5015125991886 | £0.69 £0.81 |
| 400720 | PVC Insulation tape | Brown | Hanging Pack | 1 | 1 | 5015125991909 | £0.69 £0.81 |



4.5 METRE INSULATION TAPE

| | | | | | | | |
|--------|---------------------|-------|--------------|---|---|---------------|--------------------|
| 400730 | PVC Insulation tape | Mixed | Hanging Pack | 1 | 1 | 5015125991916 | £2.74 £3.22 |
|--------|---------------------|-------|--------------|---|---|---------------|--------------------|

CABLE TIES

| | | | | | | | |
|--------|------------------|-------|--------------|---|---|---------------|--------------------|
| 400098 | 100mm Cable ties | Clear | Hanging pack | 1 | 1 | 5702124000984 | £0.72 £0.85 |
| 400099 | 140mm Cable ties | Clear | Hanging pack | 1 | 1 | 5702124000991 | £0.72 £0.85 |
| 400100 | 200mm Cable ties | Clear | Hanging pack | 1 | 1 | 5702124001004 | £0.72 £0.85 |



RUBBER GROMMETS

| | | | | | | | |
|--------|--------------------|--|--------------|----|--|---------------|--------------------|
| 400129 | 20mm diameter Open | | Hanging pack | 10 | | 5702124001295 | £0.91 £1.07 |
|--------|--------------------|--|--------------|----|--|---------------|--------------------|





Clips, Clamps & Earth Sleeving

| Product Code | Description | Product Colour | Packaging Style | Pack Qty | Min Order | Barcode | Suggested retail Price Each (ex VAT) (inc. VAT) |
|--------------|-------------|----------------|-----------------|----------|-----------|---------|---|
|--------------|-------------|----------------|-----------------|----------|-----------|---------|---|



CABLE CLIPS

| | | | | | | | |
|--------|-----------------------|-------|--------------|---|---|---------------|--------------------|
| 400089 | 1.0sqmm cable clips, | White | Hanging pack | 1 | 1 | 5702124000892 | £0.72 £0.85 |
| 400090 | 1.5sqmm cable clips, | White | Hanging pack | 1 | 1 | 5702124000908 | £0.72 £0.85 |
| 400091 | 2.5sqmm cable clips, | White | Hanging pack | 1 | 1 | 5702124000915 | £0.72 £0.85 |
| 400092 | 6.0sqmm cable clips, | White | Hanging pack | 1 | 1 | 5702124000922 | £0.72 £0.85 |
| 400975 | 10.0sqmm cable clips, | White | Hanging pack | 1 | 1 | 5015125992401 | £0.72 £0.85 |
| 400093 | 4mm Flat cable clips, | White | Hanging pack | 1 | 1 | 5702124000939 | £0.64 £0.75 |



CABLE CLIPS

| | | | | | | | |
|--------|-----------------------|-------|------------|---|---|---------------|--------------------|
| 400735 | 1.0sqmm cable clips, | White | Retail box | 1 | 1 | 5015125991923 | £1.74 £2.04 |
| 400740 | 1.5sqmm cable clips, | White | Retail box | 1 | 1 | 5015125991930 | £1.74 £2.04 |
| 400745 | 2.5sqmm cable clips, | White | Retail box | 1 | 1 | 5015125991947 | £1.92 £2.26 |
| 400750 | 6.0sqmm cable clips, | White | Retail box | 1 | 1 | 5015125991954 | £2.38 £2.79 |
| 400755 | 4mm Flat cable clips, | White | Retail box | 1 | 1 | 5015125991961 | £1.61 £1.89 |



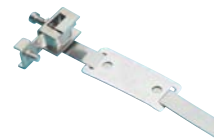
ROUND CABLE CLIPS

| | | | | | | | |
|--------|------------------------|-------|--------------|---|---|---------------|--------------------|
| 400094 | 5mm Round cable clips, | White | Hanging pack | 1 | 1 | 5702124000946 | £0.64 £0.75 |
| 400095 | 6mm Round cable clips, | White | Hanging pack | 1 | 1 | 5702124000953 | £0.64 £0.75 |
| 400096 | 7mm Round cable clips, | White | Hanging pack | 1 | 1 | 5702124000960 | £0.64 £0.75 |
| 400097 | 7mm Round cable clips, | Brown | Hanging pack | 1 | 1 | 5702124000977 | £0.64 £0.75 |



ROUND CABLE CLIPS

| | | | | | | | |
|--------|------------------------|-------|------------|---|---|---------------|--------------------|
| 400760 | 5mm Round cable clips, | White | Retail box | 1 | 1 | 5015125991978 | £1.64 £1.93 |
| 400765 | 7mm Round cable clips, | White | Retail box | 1 | 1 | 5015125991985 | £2.01 £2.36 |
| 400770 | 7mm Round cable clips, | Brown | Retail box | 1 | 1 | 5015125991992 | £2.01 £2.36 |



EARTH CLAMPS

| | | | | | | | |
|--------|------------------|--|--------------|---|---|---------------|--------------------|
| 400134 | EC15 Earth clamp | | Hanging pack | 1 | 1 | 5702124001349 | £1.83 £2.14 |
|--------|------------------|--|--------------|---|---|---------------|--------------------|



PVC EARTH SLEEVING

| | | | | | | | |
|--------|----------------------|--|--------------|---|---|---------------|--------------------|
| 400135 | 2mtr. Earth Sleeving | | Hanging pack | 1 | 1 | 5702124001356 | £0.92 £1.08 |
|--------|----------------------|--|--------------|---|---|---------------|--------------------|



HOME WIRING ACCESSORIES

| | | | | | | | |
|--------|-------------------|--|--------------|---|---|---------------|--------------------|
| 400125 | 30mm Brass screws | | Hanging pack | 1 | 1 | 5702124001257 | £0.91 £1.07 |
| 400126 | 30mm Steel screws | | Hanging pack | 1 | 1 | 5702124001264 | £0.91 £1.07 |
| 400127 | 60mm Steel screws | | Hanging pack | 1 | 1 | 5702124001271 | £0.91 £1.07 |
| 400128 | 60mm Brass screws | | Hanging pack | 1 | 1 | 5702124001288 | £0.91 £1.07 |

Fuse Wire, Fuses & Lamp Holders

| Product Code | Description | Product Colour | Packaging Style | Pack Qty | Min Order | Barcode | Suggested retail Price Each (ex VAT) (inc. VAT) |
|--------------|-------------|----------------|-----------------|----------|-----------|---------|---|
|--------------|-------------|----------------|-----------------|----------|-----------|---------|---|

FUSEWIRE

| | | | | | | | |
|--------|------------------------------|--|--------------|---|---|---------------|--------------------|
| 400136 | 5A, 15A & 30A Fusewire card, | | Hanging pack | 1 | 1 | 5702124001363 | £0.45 £0.53 |
|--------|------------------------------|--|--------------|---|---|---------------|--------------------|



PLUG FUSES

| | | | | | | | |
|--------|--|--|--------------|---|---|---------------|--------------------|
| 400112 | 3A BS1362 Fuses, 4 Pack | | Hanging pack | 1 | 1 | 5702124001127 | £0.82 £0.96 |
| 400113 | 5A BS1362 Fuses, 4 Pack | | Hanging pack | 1 | 1 | 5702124001134 | £0.82 £0.96 |
| 400114 | 13A BS1362 Fuses, 4 Pack | | Hanging pack | 1 | 1 | 5702124001141 | £0.82 £0.96 |
| 400115 | BS1362 Fuses, 2x3A, 1x5A, 1x10A, 2x13A | | Hanging pack | 1 | 1 | 5702124001158 | £1.83 £2.14 |



APPLIANCE FUSES

| | | | | | | | |
|--------|-------------------------|--|--------------|---|---|---------------|--------------------|
| 400780 | 1A BS646 Appliance fuse | | Hanging pack | 1 | 1 | 5015125992012 | £1.64 £1.93 |
| 400785 | 2A BS646 Appliance fuse | | Hanging pack | 1 | 1 | 5015125992029 | £1.64 £1.93 |
| 400790 | 3A BS646 Appliance fuse | | Hanging pack | 1 | 1 | 5015125992036 | £1.64 £1.93 |
| 400795 | 5A BS646 Appliance fuse | | Hanging pack | 1 | 1 | 5015125992043 | £1.64 £1.93 |

SCREW ENTRY LAMP HOLDERS

| | | | | | | | |
|--------|----------------------------------|-------|--------------|----|----|---------------|--------------------|
| 400800 | Screw entry lampholder | White | Hanging pack | 1 | 1 | 5015125992050 | £0.91 £1.07 |
| 400116 | Screw entry switched lampholder, | White | Hanging Pack | 1 | 1 | 5702124001136 | £1.09 £1.28 |
| 400805 | Screw entry switched lampholder, | White | Retail box | 10 | 10 | 5015125992067 | £0.69 £0.81 |



BOTTLE LAMP HOLDER

| | | | | | | | |
|--------|----------------------------|-------|--------------|---|---|---------------|--------------------|
| 400810 | Bottle lampholder adaptor, | White | Hanging pack | 1 | 1 | 5015125992074 | £5.14 £6.04 |
|--------|----------------------------|-------|--------------|---|---|---------------|--------------------|



BRASS LAMP HOLDERS

| | | | | | | | |
|--------|--------------------------------|--|--------------|---|---|---------------|--------------------|
| 400815 | Brass lampholder, | | Hanging pack | 1 | 1 | 5015125992081 | £0.91 £1.07 |
| 400118 | Brass switched lampholder, | | Hanging pack | 1 | 1 | 5702124001189 | £0.91 £1.07 |
| 400820 | Brass batten lampholder, | | Hanging pack | 1 | 1 | 5015125992098 | £0.91 £1.07 |
| 400825 | Brass lampholder mounting kit, | | Hanging pack | 1 | 1 | 5015125992104 | £0.91 £1.07 |



FLUORESCENT STARTERS

| | | | | | | | |
|--------|-------------------------------|--|--------------|---|---|---------------|--------------------|
| 400119 | 80 watt Fluorescent starter, | | Hanging pack | 1 | 1 | 5702124001196 | £0.72 £0.85 |
| 400830 | 80 watt Fluorescent starter, | | Hanging pack | 1 | 1 | 5015125992111 | £1.00 £1.18 |
| 400120 | 125 watt Fluorescent starter, | | Hanging pack | 1 | 1 | 5702124001202 | £2.29 £2.69 |





Small Lamps, Switches & Accessories

| Product Code | Description | Product Colour | Packaging Style | Pack Qty | Min Order | Barcode | Suggested retail Price Each (ex VAT) | (inc. VAT) |
|--------------|-------------|----------------|-----------------|----------|-----------|---------|--------------------------------------|------------|
|--------------|-------------|----------------|-----------------|----------|-----------|---------|--------------------------------------|------------|



SMALL LAMPS

| | | | | | | | | |
|--------|--|-------|--------------|---|---|---------------|-------|--------------|
| 400121 | Automatic plug-in night light/spare bulb | White | Hanging pack | 1 | 1 | 5702124001219 | £4.59 | £5.39 |
| 400122 | Spare bulb for automatic plug-in light | | Hanging pack | 1 | 1 | 5702124001226 | £1.64 | £1.93 |
| 400835 | Furniture display light | | | 1 | 1 | 5015125992128 | £7.34 | £8.63 |



SMALL APPLIANCE SWITCHES

| | | | | | | | | |
|--------|-------------------------------|-------|--------------|---|---|---------------|-------|--------------|
| 400123 | 2A In-line switch | White | Hanging pack | 1 | 1 | 5702124001233 | £2.29 | £2.69 |
| 400124 | 2A 3 terminal in-line switch, | Gold | Hanging pack | 1 | 1 | 5702124001240 | £2.74 | £3.22 |
| 400845 | 2A Foot switch | | Hanging pack | 1 | 1 | 5015125992142 | £3.67 | £4.31 |



CEILING HOOK

| | | | | | | | | |
|--------|---------------------------|--|--------------|---|---|---------------|-------|--------------|
| 400860 | Brass plated ceiling hook | | Hanging pack | 1 | 1 | 5015125992173 | £3.67 | £4.41 |
|--------|---------------------------|--|--------------|---|---|---------------|-------|--------------|



REPLACEMENT PULL CORDS

| | | | | | | | | |
|--------|------------------------|----------|--------------|---|---|---------------|-------|---------------|
| 400130 | Replacement pull cord, | White | Hanging pack | 1 | 1 | 5702124001301 | £0.91 | £1.07 |
| 400850 | Replacement pull cord, | A/Pine | Hanging pack | 1 | 1 | 5015125992159 | £9.18 | £10.79 |
| 400855 | Replacement pull cord, | Mahogany | Hanging pack | 1 | 1 | 5015125992166 | £9.18 | £10.79 |



SOCKET SAFETY COVER

| | | | | | | | | |
|--------|-----------------------------------|--|--------------|---|---|---------------|-------|--------------|
| 400865 | 13 amp socket Safety Cover, White | | Hanging pack | 1 | 1 | 5015125992180 | £1.09 | £1.28 |
|--------|-----------------------------------|--|--------------|---|---|---------------|-------|--------------|



DIGITAL MULTIMETER

| | | | | | | | | |
|--------|---|--|--------------|---|---|---------------|-------|--------------|
| 721650 | Digital Multimeter c/w test leads, battery and instructions | | Hanging Pack | 1 | 1 | 5702127216504 | £6.38 | £7.50 |
|--------|---|--|--------------|---|---|---------------|-------|--------------|

POCKET MULTIMETER

| | | | | | | | | |
|--------|--|--|--------------|---|---|---------------|-------|---------------|
| 721652 | Pocket Multimeter c/w test leads, battery and instructions | | Hanging pack | 1 | 1 | 5702127216528 | £8.74 | £10.27 |
|--------|--|--|--------------|---|---|---------------|-------|---------------|

MAINS TESTER

| | | | | | | | | |
|--------|-------------------------------|--|------------|---|---|---------------|-------|--------------|
| 881155 | Mains Tester screwdriver 65mm | | Retail box | 1 | 1 | 5015129983287 | £1.37 | £1.61 |
|--------|-------------------------------|--|------------|---|---|---------------|-------|--------------|

Outdoor Accessories

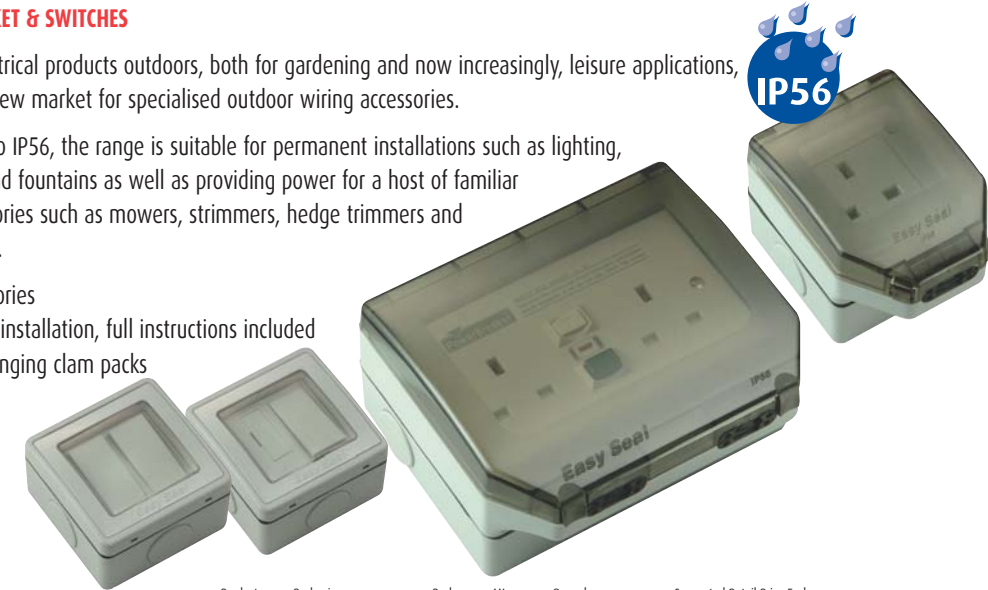
OUTDOOR SOCKET & SWITCHES

The use of electrical products outdoors, both for gardening and now increasingly, leisure applications, has created a new market for specialised outdoor wiring accessories.

Weatherproof to IP56, the range is suitable for permanent installations such as lighting, pond pumps and fountains as well as providing power for a host of familiar outdoor accessories such as mowers, strimmers, hedge trimmers and power washers.

Outdoor accessories

- Ideal for DIY installation, full instructions included
- Packed in hanging clam packs



| Product Code | Description | Product Colour | Packaging Style | Pack Qty | Min Qty | Barcode | Suggested Retail Price Each (ex VAT) | Retail Price |
|--------------|-------------|----------------|-----------------|----------|---------|---------|--------------------------------------|--------------|
|--------------|-------------|----------------|-----------------|----------|---------|---------|--------------------------------------|--------------|

WEATHERPROOF SOCKETS

| | | | | | | | | |
|--------|----------------------|-------|--------------|---|---|---------------|--------|---------------|
| 400028 | IP56 1 gang | White | Hanging pack | 1 | 1 | 5702124000281 | £21.14 | £24.83 |
| 400029 | IP56 2 gang Switched | White | Hanging pack | 1 | 1 | 5702124000298 | £41.35 | £48.59 |
| 400030 | IP56 2 gang with RCD | White | Hanging pack | 1 | 1 | 5702124000304 | £76.28 | £89.63 |

WEATHERPROOF CONNECTION UNIT

| | | | | | | | | |
|--------|---------------|-------|--------------|---|---|---------------|--------|---------------|
| 400031 | IP56 Switched | White | Hanging pack | 1 | 1 | 5702124000311 | £16.53 | £19.43 |
|--------|---------------|-------|--------------|---|---|---------------|--------|---------------|

WEATHERPROOF SWITCHES

| | | | | | | | | |
|--------|-------------------|-------|--------------|---|---|---------------|--------|---------------|
| 400033 | IP56 1 gang 2 way | White | Hanging pack | 1 | 1 | 5702124000335 | £15.15 | £17.80 |
| 400036 | IP56 2 gang 2 way | White | Hanging pack | 1 | 1 | 5702128206436 | £22.97 | £26.99 |

WEATHERPROOF PLUG & SOCKET

| | | | | | | | | |
|--------|---------------------------------|-------|--------------|---|---|---------------|--------|---------------|
| 400234 | IP68 Weatherproof plug & socket | Black | Hanging pack | 1 | 1 | 5702124002346 | £11.48 | £13.49 |
|--------|---------------------------------|-------|--------------|---|---|---------------|--------|---------------|



Worklights & Home Security

FLEXLIGHTS

Tough and lightweight, JOJO flexlights are the next generation in worklights. Suitable for the workshops, garage or lighting up any DIY job, they can even be used as temporary lighting in or around the home.

- Made from knock-proof materials
- High lumen output, low energy lamps
- Excellent for lighting work areas
- Stand or hang in many positions



HALOGEN LIGHTS

A range of competitive halogen floodlights for permanent installation or mobile lighting.

| Product Code | Description | Product Colour | Packaging Style | Pack Quantity | Min Qty | Barcode | Suggested Retail Price Each (ex VAT) (inc. VAT) |
|-------------------|----------------------|----------------|-----------------|---------------|---------|---------------|---|
| FLEXLIGHTS | | | | | | | |
| 916000 | 16 watt Flexlight 16 | Black | Boxed | 1 | 1 | 5015125983263 | £20.22 £23.76 |
| 400037 | 28 watt Flexlight 28 | Black | Boxed | 1 | 1 | 5702128206643 | £27.53 £32.35 |

| Product Code | Description | Product Colour | Packaging Style | Pack Quantity | Min Qty | Barcode | Suggested Retail Price Each (ex VAT) (inc. VAT) |
|----------------------------|-------------------|----------------|-----------------|---------------|---------|---------------|---|
| HALOGEN FLOODLIGHTS | | | | | | | |
| 920274 | 150 watt | Black | Boxed | 1 | 1 | 5702129202741 | £3.45 £4.05 |
| 920276 | 500 watt | Black | Boxed | 1 | 1 | 5702129202765 | £4.55 £5.34 |
| 820625 | 150 watt with PIR | Black | Boxed | 1 | 1 | 5702128206252 | £17.69 £20.79 |
| 820626 | 500 watt with PIR | Black | Boxed | 1 | 1 | 5702128206269 | £18.34 £21.55 |

| Product Code | Description | Product Colour | Packaging Style | Pack Quantity | Min Qty | Barcode | Suggested Retail Price Each (ex VAT) (inc. VAT) |
|------------------------------------|-----------------------------|----------------|-----------------|---------------|---------|---------------|---|
| 500 WATT HALOGEN WORKLIGHTS | | | | | | | |
| 925275 | 500 watt with 0.5m 6A flex | Black | Boxed | 1 | 1 | 5702129252753 | £8.05 £9.45 |
| 825275 | 500 watt with 2.5m 13A flex | Black | Boxed | 1 | 1 | 5702128252754 | £11.90 £13.98 |

| Product Code | Description | Packaging Style | Pack Quantity | Min Qty | Barcode | Suggested Retail Price Each (ex VAT) (inc. VAT) |
|-----------------------|---|-----------------|---------------|---------|---------------|---|
| BATTERY LIGHTS | | | | | | |
| 820572 | Swivel head torch with retractable feet | Clam pack | 1 | 1 | 5702128205729 | £7.31 £8.59 |
| 820669 | Camping lantern | Boxed | 1 | 1 | 5702128206696 | £13.74 £16.14 |

RCD Protection

Residual Current Devices (RCD's) offer protection and peace of mind for higher risk electrical equipment.

Choose from either plug in adaptors, rewirable plugs, wall sockets or In-Line Switches.

All JOJO RCD's offer

- 30mA Tripping Current
- 30mS Tripping Time



| Product Code | Description | Product Colour | Packaging Style | Pack Qty | Min Qty | Barcode | Suggested Retail Price Each (ex VAT) (inc. VAT) |
|---------------------|-------------------------------------|----------------|-----------------|----------|---------|---------------|---|
| RCD ADAPTORS | | | | | | | |
| 400137 | 13A RCD Plug-In adaptor | White | Hanging pack | 1 | 1 | 5702124001370 | £9.18 £10.79 |
| 400935 | 13A Twin Socket RCD plug-in adaptor | White | Hanging pack | 1 | 1 | 5015125992326 | £16.53 £19.43 |

| Product Code | Description | Product Colour | Packaging Style | Pack Qty | Min Qty | Barcode | Suggested Retail Price Each (ex VAT) (inc. VAT) |
|--------------------------------|-----------------|----------------|-----------------|----------|---------|---------------|---|
| REWIREABLE RCD ADAPTORS | | | | | | | |
| 400940 | 13A RCD plug | White | Hanging pack | 1 | 1 | 5015125992333 | £13.78 £16.19 |
| 400943 | 13A RCD Plug | Black | Hanging pack | 1 | 1 | 5015125992555 | £13.78 £16.19 |
| 400945 | 13A In-Line RCD | White | Hanging pack | 1 | 1 | 5015125992340 | £21.59 £25.37 |

| Product Code | Description | Product Colour | Packaging Style | Pack Qty | Min Qty | Barcode | Suggested Retail Price Each (ex VAT) (inc. VAT) |
|--------------------|------------------------------|----------------|-----------------|----------|---------|---------------|---|
| RCD SOCKETS | | | | | | | |
| 400948 | 1 gang RCD flush wall socket | White | Hanging pack | 1 | 1 | 5015125992562 | £22.97 £26.99 |
| 400950 | 2 gang RCD flush wall socket | White | Hanging pack | 1 | 1 | 5015125992357 | £25.73 £30.23 |



Smoke Alarms

Conditions of Sale

SMOKE ALARMS

A range of 3 ionisation-type smoke alarms for domestic use, battery operated and easy to install.

- The 'Solo' operates as a single unit, independent of any other detection device.
- The 'Pause' features an additional function whereby an alarm condition can be paused for 10 minutes, making this model particularly suited to kitchen installation.
- The 'System' model provides maximum 'peace of mind' by allowing additional units (up to a maximum of 20) to be connected to each other. If one model alarms, the connected units are activated.

Each unit is supplied with a long-life battery and fixing bracket to ensure quick and easy removal of the unit for cleaning or battery change.



| Product Code | Description | Product Colour | Packaging Style | Pack Quantity | Min Qty | Barcode | Suggested Retail Price Each (ex VAT) (inc. VAT) |
|---------------|--------------------|----------------|-----------------|---------------|---------|---------------|---|
| 820611 | Solo smoke alarm | White | Clam pack | 1 | 1 | 5702128206115 | £5.51 £6.47 |
| 820612 | Pause smoke alarm | White | Clam pack | 1 | 1 | 5702128206122 | £8.26 £9.71 |
| 820613 | System smoke alarm | White | Clam pack | 1 | 1 | 5702128206139 | £9.18 £10.79 |

Plug-in Timers

- Control the time your lights or appliances switch on.
- Individual or twin pack.
- Ideal for added security in the home.



| Product Code | Description | Product Colour | Packaging Style | Pack Quantity | Min Qty | Barcode | Suggested Retail Price Each (ex VAT) (inc. VAT) |
|---------------|----------------------------------|----------------|-----------------|---------------|---------|---------------|---|
| 400955 | 24hr mechanical timer | White | Clam pack | 1 | 1 | 5015125992364 | £3.67 £4.31 |
| 400960 | 24hr mechanical timer, Twin Pack | White | Clam pack | 2 | 1 | 5015125992371 | £7.16 £8.41 |

1 Interpretation
1.1 In these Conditions:
 'BUYER' means the person who accepts a quotation of the Seller for the sale of the Goods or whose order for the Goods is accepted by the Seller
 'GOODS' means the goods (including any instalment of the goods or any parts for them) which the Seller is to supply in accordance with these Conditions
 'SELLER' means JOJO ELECTRIC LIMITED of Unit 17, Walker Industrial Park, Walker Road, Goswick, Blackburn, Lancashire, BB1 2QE
 'CONDITIONS' means the standard terms and conditions of sale set out in this document and (unless the context otherwise requires) includes any special terms and conditions agreed in writing between the Buyer and the Seller
 'CONTRACT' means the contract for the purchase and sale of the Goods 'WRITING' includes telex, cable, facsimile transmission and comparable means of communication
1.2 Any reference in these Conditions to any provision of a statute shall be construed as a reference to that provision as amended, re-enacted or extended at the relevant time
1.3 The headings in these Conditions are for convenience only and shall not affect their interpretation
2 Basis of the sale
2.1 The Seller shall sell and the Buyer shall purchase the Goods in accordance with any written quotation of the Seller which is accepted by the Buyer, or any written order of the Buyer which is accepted by the Seller, subject in either case to these Conditions, which shall govern the Contract to the exclusion of any other terms and conditions subject to which any such quotation is accepted or purported to be accepted, or any such order is made purported to be made, by the Buyer
2.2 No variation to these Conditions shall be binding unless agreed in Writing between the authorised representatives of the Buyer and the Seller
2.3 The Seller's employees or agents are not authorised to make any representations concerning the Goods unless confirmed by the Seller in Writing. In entering into the Contract the Buyer acknowledges that it does not rely on, and waives any claim for breach of, any such representations which are not so confirmed
2.4 Any advice or recommendation given by the Seller or its employees or agents to the Buyer or its employees or agents as to the storage, application or use of the Goods which is not confirmed in Writing by the Seller is followed or acted upon entirely at the Buyer's own risk, and accordingly the Seller shall not be liable for any such advice or recommendation which is not so confirmed
2.5 Any typographical, clerical or other error or omission in any sales literature, quotation, price list, acceptance of offer, invoice or other document or information issued by the Seller shall be subject to correction without any liability on the part of the Seller
3 Orders and Specifications
3.1 No order submitted by the Buyer shall be deemed to be accepted by the Seller unless and until confirmed in Writing by the Seller's authorised representative
3.2 The Buyer shall be responsible to the Seller for ensuring the accuracy of the terms of any order (including any applicable specification) submitted by the Buyer, and for giving the Seller any necessary information relating to the Goods within a sufficient time to enable the Seller to perform the Contract in accordance with its terms
3.3 The quantity, quality and description of and any specification for the Goods shall be those set out in the Seller's quotation (if accepted by the Buyer) or the Buyer's order (if accepted by the Seller)
3.4 If the Goods are to be manufactured or any process is to be applied to the Goods by the Seller in accordance with a specification submitted by the Buyer, the Buyer shall indemnify the Seller against all loss, damages, costs and expenses awarded against or incurred by the Seller in connection with or paid or agreed to be paid by the Seller in settlement of any claim for infringement of any patent, copyright, design, trade mark or other industrial or intellectual property rights of any other person which results from the Seller's use of the Buyer's specification
3.5 The Seller reserves the right to make any changes in the specification of the Goods which are required to conform with any applicable safety or other statutory requirements or, where the Goods are to be supplied to the Seller's specification, which do not materially affect their quality or performance
3.6 No order which has been accepted by the Seller may be cancelled by the Buyer except with the agreement in Writing of the Seller and on terms that the Buyer shall indemnify the Seller in full against all loss (including loss of profit), costs (including the cost of all labour and materials used), damages, charges and expenses incurred by the Seller as a result of cancellation
3.7 Minimum order quantities are as specified in the Seller's catalogue and price list. Minimum unit packs are not normally split but where this is especially requested a 20% surcharge is added to the cost of any split item
4 Price of the goods
4.1 The price of the Goods shall be the Seller's quoted price or, where no price has been quoted (or a quoted price is no longer valid), the price listed in the Seller's published price list current at the date of acceptance of the order. Where the Goods are supplied for export from the United Kingdom, the Seller's published export list shall apply. All prices quoted are valid for 30 days only or until changes are accepted by the Buyer, after which time they may be altered by the Seller without giving notice to the Buyer
4.2 The Seller reserves the right, by giving notice to the Buyer at any time before delivery, to increase the price of the Goods to reflect any increase in the cost to the Seller which is due to any factor beyond the control of the Seller (such as, without limitation, any foreign exchange fluctuations, currency regulation, alteration of duties, significant increases in the costs of labour, materials or other costs of manufacture) any change in delivery dates quantities or specifications for the Goods which is requested by the Buyer or any delay caused by any instructions of the Buyer or failure of the Buyer to give the Seller adequate information or instructions
4.3 Except as otherwise stated under the terms of any quotation or in any price list of the Seller, and unless otherwise agreed in Writing between the Buyer and the Seller, all prices are given by the Seller on the basis that the Goods will be delivered by the Seller at, or dispatched for delivery to, the place or places in the manner specified in the order or quotation or as subsequently agreed in Writing by the Seller and the Buyer PROVIDED THAT orders below a minimum net value of One hundred pounds (£100) and are subject to a nominal carriage and packing surcharge of seven pounds fifty pence (£7.50). The Seller reserves to itself an absolute discretion to determine the most practicable method of delivery, considering cost and the required dates of delivery. Requests for special delivery or transport by train, post or air freight will be charged to the Buyer at cost. Where applicable an Overnight charge will be applied, the minimum value for collected orders is thirty pounds (£30.00).
4.4 The price is exclusive of any applicable value added tax, which the Buyer shall be additionally liable to pay to the Seller
4.5 The cost of pallets and returnable containers will be charged to the Buyer in addition to the price of the Goods, but full credit will be given to the Buyer provided they are returned undamaged to the Seller before the due payment date
4.6 A change of 10% of the net value of the goods will be made if the Buyer should require special inspection or test arrangements to be carried out on the goods at the Seller's premises
5 Terms of Payment
5.1 Subject to any special terms agreed in Writing between the Buyer and the Seller the Seller shall be entitled to invoice the Buyer for the price of the Goods on or at any time after delivery of the Goods, unless the Goods are to be collected by the Buyer or the Buyer wrongfully fails to take delivery of the Goods, in which event the Seller shall be entitled to invoice the Buyer for the price at any time after the Seller has notified the Buyer that the goods are ready for collection or (as the case may be) the Seller has tendered delivery of the Goods
5.2 Unless otherwise agreed in Writing, the Buyer shall pay the price of the Goods (less any discount to which the Buyer is entitled, but without any other deduction) within 30 days of the date of the Seller's invoice, notwithstanding that delivery may not have taken place and the property in the Goods has not passed to the Buyer. The time of payment of the price shall be of the essence of the Contract. Receipts for payment will be issued only upon request
5.3 If the Buyer fails to make any payment on the due date then, without prejudice to any other right or remedy available to the Seller, the Seller shall be entitled to:
5.3.1 cancel the contract or suspend any further deliveries to the Buyer
5.3.2 appropriate any payment made by the Buyer to such of the Goods (or the goods supplied under any other contract between, the Buyer and the Seller) as the Seller may think fit (notwithstanding any purported appropriation by the Buyer), and
5.3.3 charge the Buyer interest (both before and after any judgment) the amount unpaid, at the rate of five per cent per annum above National Westminster Bank base rate from time to time, until payment in full is made (a part of a month being treated as a full month for the purpose of calculating interest)
6 Delivery
6.1 Delivery of the Goods shall be made by the Buyer collecting the Goods at the Seller's premises at any time after the Seller has notified the Buyer that the Goods are ready for collection or, if some other place for delivery is agreed by the Seller, by the Seller delivering the Goods to that place
6.2 Any dates quoted for delivery of the Goods are approximate only and the Seller shall not be liable for any delay in delivery of the Goods howsoever caused. Time for delivery shall not be of the essence unless previously agreed by the Seller in Writing. The Goods may be delivered by the Seller in advance of the quoted delivery date upon giving reasonable notice to the Buyer
6.3 Where the Goods are to be delivered in instalments each delivery shall constitute a separate contract and failure by the seller to deliver any one or more of the instalments in accordance with these conditions or any claim by the Buyer in respect of any one or more instalments shall not entitle the Buyer to treat the contract as a whole as repudiated
6.4 If the Seller fails to deliver the Goods for any reason other than any cause beyond the Seller's reasonable control or the Buyer's fault, and the Seller is accordingly liable to the Buyer, the Seller's liability shall be limited to the excess (if any) of the cost to the Buyer (in the cheapest available market) of similar goods to replace those not delivered over the price of the Goods.
6.5 If the Buyer fails to take delivery of the Goods or fails to give the Seller adequate delivery instructions at the time stated for delivery (otherwise than by reason of any cause beyond the Buyer's reasonable control or by reason of the Seller's fault) then, without prejudice to any other right or remedy available to the Seller, the Seller may:
6.5.1 store the goods until actual delivery and charge the Buyer for the reasonable costs (including insurance) of storage;
6.5.2 sell the Goods at the best price readily obtainable and (after deducting all reasonable storage and selling expenses) account to the Buyer for the excess over the price under the Contract or charge the Buyer for any shortfall below the price under the Contract
6.5.3 **Loss or damage in transit**
7 When the price quoted includes delivery we shall repair or replace free of charge, goods damaged in transit or not delivered in accordance with the Advice Note provided that we are given written notification of such damage or non-delivery within such time as will enable us to comply with the carrier's conditions of carriage as affecting loss or damage in transit, or where delivery is made by our own transport within three days after receipt of the Advice Note
8 Risk and property
8.1 Risk of damage to or loss of the Goods shall pass to the Buyer
8.1.1 in the case of Goods to be delivered at the Seller's premises, at the time when the Seller notifies the Buyer that the Goods are available for collection or
8.1.2 in the case of Goods to be delivered otherwise than at the Seller's premises, at the time of delivery or, if the Buyer wrongfully fails to take delivery of the Goods, the time when the Seller has tendered delivery of the Goods
8.2 Notwithstanding delivery and the passing of risk in the Goods, or any other provision of these Conditions, property of and legal title of the Goods shall not pass to the Buyer until the Seller has received in cash or cleared funds payment in full of the price of the Goods and all other goods agreed to be sold by the Seller to the Buyer for which payment is then due
8.3 Until such time as the property in the Goods passes to the Buyer, the Buyer shall hold the Goods as the Seller's fiduciary agent and bailee and shall keep the Goods separate from those of the Buyer and third parties and properly stored, protected and insured and identified as the Seller's property. Until that time the Buyer shall be entitled to resell or use the Goods in the ordinary course of its business but shall account to the Seller for the proceeds of sale or otherwise of the Goods, whether tangible or intangible, including insurance proceeds, and shall keep all such proceeds separate from any moneys or property of the Buyer and third parties and, in the case of tangible proceeds, stored, protected and insured
8.4 Until such time as the property of the Goods passes to the Buyer (and provided the Goods are still in existence and have not been resold), the Seller shall be entitled at any time to require the Buyer to deliver up the Goods to the Seller and, if the Buyer fails to do so forthwith, to enter upon any premises of the Buyer or any third party where the Goods are stored and repossess the Goods
8.5 The Buyer shall not be entitled to pledge or in any way charge by way of security for any indebtedness any of the Goods which remain the property of the Seller, but if the Buyer does so all monies owing by the Buyer to the Seller shall (without prejudice to any other right or remedy of the Seller) forthwith become due and payable
9 Warranties and liabilities
9.1 Subject as expressly provided in these Conditions, and except where the Goods are sold to a person dealing as a consumer (within the meaning of the Unfair Contract Terms Act 1977) all warranties, conditions or other terms implied by statute or common law are excluded to the fullest extent permitted by law
9.2 Where the Goods are sold under a consumer transaction (as defined by the Consumer Transactions (Restrictions on Statements) Order 1976) the statutory rights of the Buyer are not affected by these Conditions
9.3 Any claim by the Buyer which is based on any defect in the quality or condition of the Goods or their failure to correspond with specification shall (whether or not delivery is refused by the Buyer) be notified to the Seller within 7 days from the date of delivery or (where the defect or failure was not apparent on reasonable inspection) within a reasonable time after discovery of the defect or failure. If delivery is not refused, and the Buyer does not notify the Seller accordingly the Buyer shall not be entitled to reject the Goods and the Seller shall have no liability for such defect or failure, and the Buyer shall be bound to pay the price as if the Goods had been delivered in accordance with the Contract
9.4 Where any valid claim in respect of any of the Goods which is based on any defect in the quality or conditions of the Goods or their failure to meet specification is notified to the Seller in accordance with these Conditions, the Seller shall be entitled to replace the Goods (or the part or parts in question) free of charge or, at the Seller's sole discretion, refund to the Buyer the price of the Goods (or a proportionate part of the price), but the Seller shall have no further liability to the Buyer
9.5 Except in respect of death or personal injury caused by the Seller's negligence, the Seller shall not be liable to the Buyer by reason of any representation, or any implied warranty, condition or other term, or any duty at common law, or under the express terms of the Contract, for any consequential loss or damage (whether for loss of profit or otherwise), costs expenses or other claims for consequential compensation whatsoever (and whether caused by the negligence of the Seller, its employees or agents or otherwise which arise out of or in connection with the supply of the Goods or their use or resale by the Buyer, except as expressly provided in these Conditions)
9.6 The Seller shall not be liable to the Buyer or be deemed to be in breach of the Contract by reason of any delay in performing, or any failure to perform, any of the Seller's obligations in relation to the Goods if the delay or failure was due to any cause beyond the Seller's reasonable control. Without prejudice to the generality of the foregoing, the following shall be regarded as causes beyond the Seller's reasonable control:
9.6.1 Act of God, explosion, flood, tempest, fire or accident;
9.6.2 war or threat of war, sabotage, insurrection, civil disturbance or requisition;
9.6.3 acts, restrictions, regulations, bye-laws, prohibitions or measures of any kind on the part of any governmental, parliamentary or local authority;
9.6.4 import or export relations or embargoes;
9.6.5 strikes, lock-outs or other industrial actions or trade disputes (whether involving employees of the Seller, or of a third party);
9.6.6 difficulties in obtaining raw materials, labour, fuel, parts or machinery;
9.6.7 power failures or breakdown in machinery
10 Indemnity
10.1 If any claim is made against the Buyer that the Goods infringe or that their use or resale infringes the patent, copyright, design, trade mark or other industrial or intellectual property rights of any other person, the Seller shall indemnify the Buyer against all loss, damages, costs and expenses awarded against or incurred by the Buyer in connection with the claim, or paid or agreed to be paid by the Buyer in settlement of the claim, provided that:
10.1.1 the Seller is given full control of any proceedings or negotiations in connection with any such claim;
10.1.2 the Buyer shall give full control of any proceedings or negotiations in connection with any such claim;
10.1.3 the Buyer shall give the Seller all reasonable assistance for the purposes of any such proceedings or negotiations;
10.1.4 except pursuant to a final award, the Buyer shall not pay or accept any such claim, or compromise any such proceedings without the consent of the Seller (which shall not be unreasonably withheld);
10.1.5 the Buyer shall do nothing which would or might violate any policy of insurance or insurance cover which the Buyer may have in relation to such infringement, and this indemnity shall not apply to the extent that the Buyer recovers any sums under any such policy or cover (which the Buyer shall use to its best endeavours to do)
10.1.6 the Seller shall be entitled to the benefit of, and the Buyer shall accordingly account to the Seller for, all damages and costs (if any) awarded in favour of the Buyer which are payable by or agreed with the consent of the Buyer (which consent shall not be unreasonably withheld) to be paid by any other party in respect of any such claim; and
10.1.7 without prejudice to any duty of the Buyer at common law, the Seller shall be entitled to require the Buyer to take such steps as the Seller may reasonably require to mitigate or reduce any such loss, damages, costs or expenses for which the Seller is liable to indemnify the buyer under this clause
11 General
11.1 Any notice required or permitted to be given by either party to the other under these Conditions shall be in Writing addressed to that other party at its registered office or principal place of business or such other address as may at the relevant time have been notified pursuant to this provision to the other party
11.2 No waiver by the Seller of any breach of the Contract by the Buyer shall be considered as a waiver of any subsequent breach of the same or any other provision
11.3 If any provision of these Conditions is held by any competent authority to be invalid or unenforceable in whole or in part the validity of the other provisions of these Conditions and the remainder of the provision in question shall not be affected thereby
11.4 Any dispute arising under or in connection with these Conditions or the sale of the Goods shall be referred to arbitration by a single arbitrator appointed by agreement or (in default) nominated on application of either party by the President for the time being of the Law Society for England and Wales
11.5 The Contract shall be subject to the enclosure jouable of the English laws governed by the laws of England.



JO-EL Electric Ltd
Unit 17, Walker Industrial Estate, Walker Road,
Guide, Blackburn, Lancashire BB1 2QE
Sales Tel: 01254 263501
Fax: 01254 298984

www.jo-el.co.uk