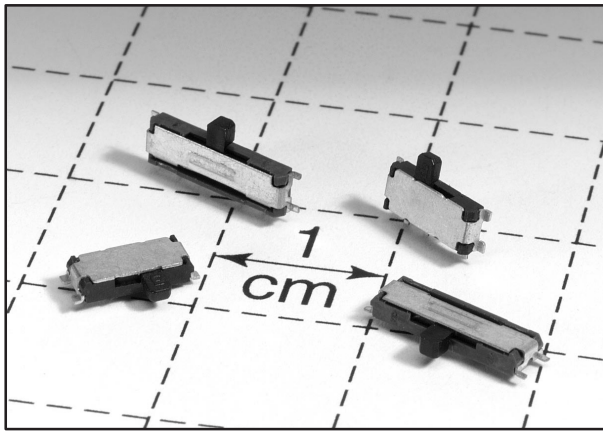


C&K PCM Series Ultraminiature Surface Mount Slide Switches *New!*



Features/Benefits

- Ultraminiature surface mount
- Low profile
- SPDT & DPDT models

Typical Applications

- Computer peripherals & network products
- Telecommunication products
- Test & measurement equipment

How To Order

Complete part numbers for PCM Series Ultraminiature Surface Mount Slide Switches are shown on pages below.

Specifications

CONTACT RATING: 0.3A @ 6 VDC.
 MECHANICAL LIFE: 10,000 cycles.
 CONTACT RESISTANCE: 70 milliohms max.
 INSULATION RESISTANCE: 100 milliohms min. @ 500V.
 DIELECTRIC STRENGTH: 500 VAC min.
 OPERATING TEMPERATURE: -10°C to +85°C.
 SOLDERABILITY: 255°C max. solder temperature.
 PACKAGING: Tape & reel.

Materials

CASE: P.P.S.
 COVER: SUS 301
 SLIDER: Nylon 4/6
 BRUSH: Copper alloy silver clad.
 TERMINALS: Copper alloy tin, silver plated.

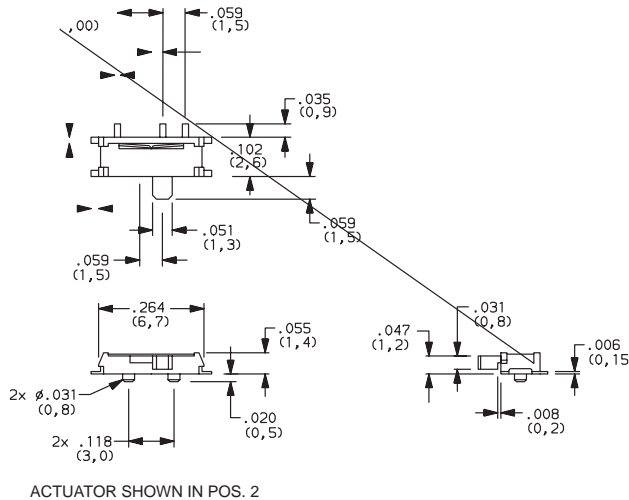
NOTE: Specifications and materials listed above are for switches with standard options. For information on specific and custom switches, consult Customer Service Center.



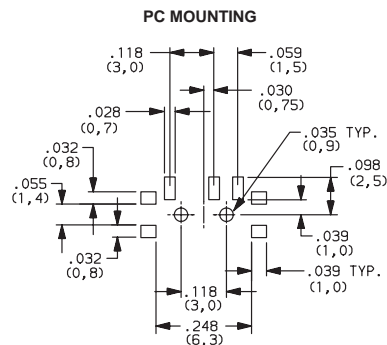
Slide



PCM12SMTR
SPDT



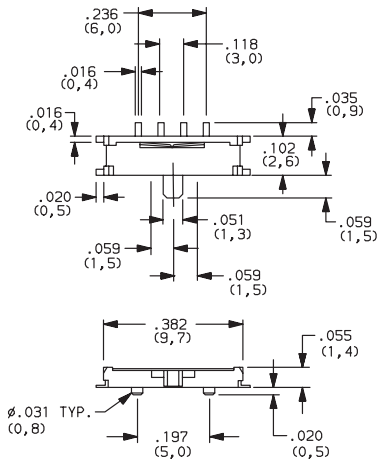
| PART NUMBER | SWITCH FUNCTION | |
|------------------|-----------------|--------|
| | POS. 1 | POS. 2 |
| PCM12SMTR | ON | ON |
| CONN. TERMINALS | 1-2 | 2-3 |
| SCHMATIC | | |
| SPDT | | |



New!

C&K PCM Series Ultraminiature Surface Mount Slide Switches

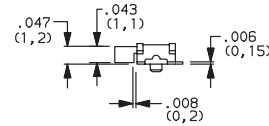
| PART NUMBER | SWITCH FUNCTION | | |
|------------------|-----------------|--------|--------|
| | POS. 1 | POS. 2 | POS. 3 |
| PCM13SMTR | ON | ON | ON |
| CONN. TERMINALS | 1-3 | 2-3 | 3-4 |
| SCHMATIC | | | |
| DPDT | | | |



ACTUATOR SHOWN IN POS. 2



PCM13SMTR
DPDT



PC MOUNTING

