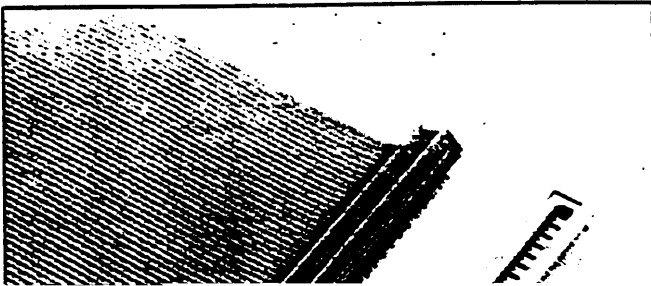


469-210 to 469-294

100" x .100" PCB

Two Row

3900 Series



- Fits standard .100 inch x .100 inch header layout

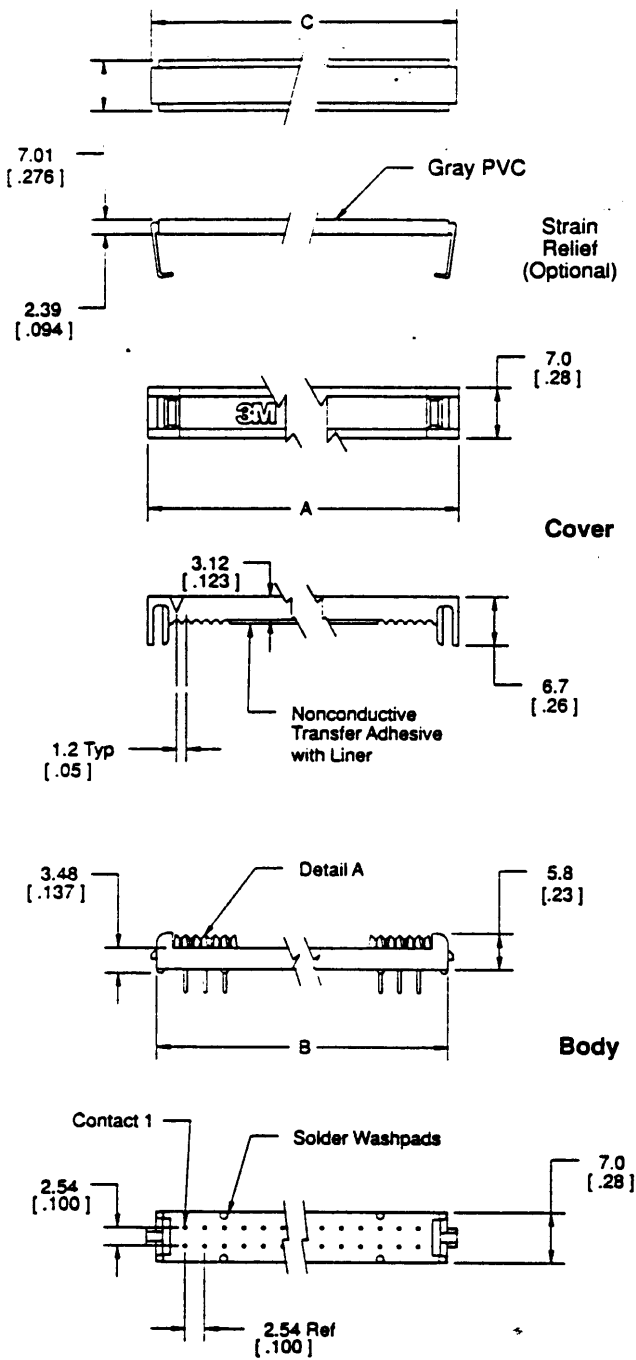
100" x .100" PCB

Two Row

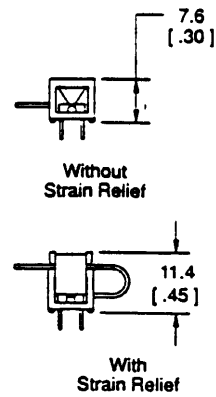
3900 Series

Sheet 2 of 3

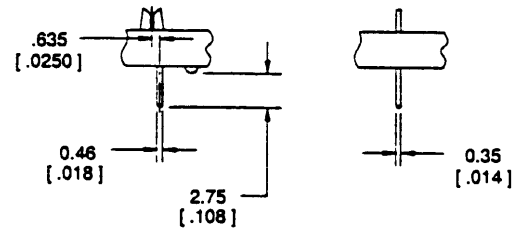
TS-0004-10



Assembled Height



Detail A



mm [Inch]			
Tolerance Unless Noted			
	.0	.00	.000
mm	±.3	±.13	

[] Dimensions for Reference Only

Ordering Information

Connector
39XX-X0X0T

Contact Quantity:
See Table

Cover Style:
0 = Cover, Two Piece,
with Adhesive
1 = Cover, Preassembled
No Adhesive

Contact Material:
0 = Be Cu (C172) (Standard)
2 = Phosphor Bronze (Special Order)

Strain Relief
(Optional)

3448-39XX

Contact Quantity:
See Table

3M Electronic Products Division

6801 River Place Blvd.
Austin, TX 78726-9000

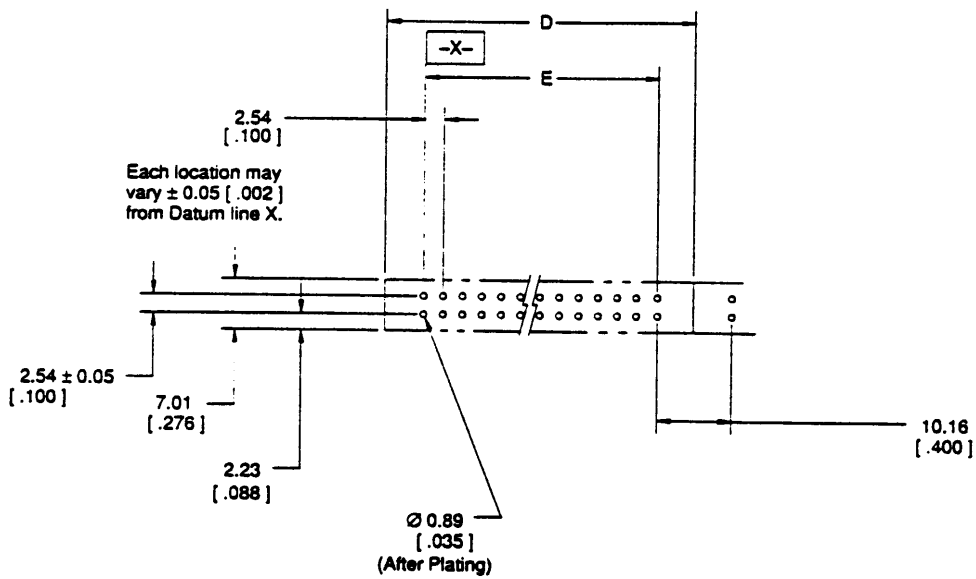
100" x .100" PCB

Two Row

3900 Series

CONTACT QUANTITY	DIM A	DIM B	DIM C	DIM D	DIM E
06	15.2 [0.60]	12.8 [0.50]	14.8 [0.57]	15.2 [0.60]	5.1 [0.20]
08	17.7 [0.70]	15.3 [0.60]	17.1 [0.67]	17.7 [0.70]	7.6 [0.30]
10	20.4 [0.80]	17.8 [0.70]	19.8 [0.78]	20.4 [0.80]	10.2 [0.40]
14	25.5 [1.00]	22.9 [0.90]	25.0 [0.98]	25.5 [1.00]	15.2 [0.60]
18	28.1 [1.10]	25.5 [1.00]	27.4 [1.08]	28.1 [1.10]	17.8 [0.70]
20	33.1 [1.30]	30.5 [1.20]	32.5 [1.28]	33.1 [1.30]	22.9 [0.90]
24	38.0 [1.50]	35.6 [1.40]	37.4 [1.47]	38.0 [1.50]	27.9 [1.10]
28	40.8 [1.60]	38.2 [1.50]	40.0 [1.57]	40.8 [1.60]	30.5 [1.20]
30	45.6 [1.80]	43.2 [1.70]	45.0 [1.77]	45.6 [1.80]	35.6 [1.40]
34	50.9 [2.00]	48.3 [1.90]	50.3 [1.98]	50.9 [2.00]	40.8 [1.60]
38	53.3 [2.10]	50.9 [2.00]	52.8 [2.07]	53.3 [2.10]	43.2 [1.70]
40	58.5 [2.30]	55.9 [2.20]	58.0 [2.28]	58.5 [2.30]	48.3 [1.90]
50	71.2 [2.80]	68.6 [2.70]	70.8 [2.78]	71.2 [2.80]	61.0 [2.40]
60	83.9 [3.30]	81.3 [3.20]	83.3 [3.28]	83.9 [3.30]	73.7 [2.90]
64	89.0 [3.50]	86.4 [3.40]	88.4 [3.48]	89.0 [3.50]	78.7 [3.10]

Sheet 3 of 3



Recommended Board Layout

TS-0004-10

3M Electronic Products Division

6801 River Place Blvd.
Austin, TX 78726-9000