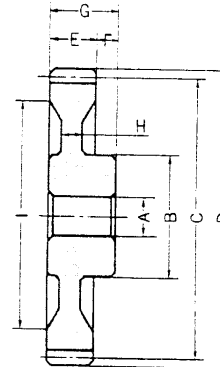
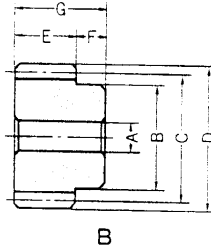
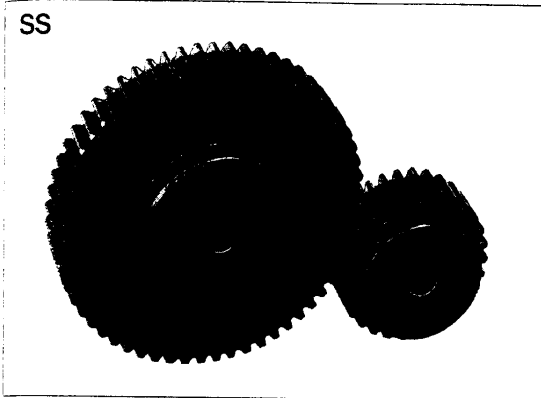


SS2-12 ⇒ SS2-36

Part no.s 708-4330 ⇒ 4420

SPUR GEARS (SS)



■ m2 Material: S45C(Steel) 20° Pressure Angle Face width: 20 mm

Catalog No.	z	AH7	B	C	D	E	F	G	H	I	(Type) Weight-kgf
SS2-12	12	10	18	24.0	28.0	20	10	30	—	—	(B) 0.09
SS2-13	13	10	20	26.0	30.0	20	10	30	—	—	(B) 0.10
SS2-14	14	10	20	28.0	32.0	20	10	30	—	—	(B) 0.10
SS2-15	15	12	24	30.0	34.0	20	10	30	—	—	(B) 0.11
SS2-16	16	12	26	32.0	36.0	20	10	30	—	—	(B) 0.15
SS2-17	17	12	28	34.0	38.0	20	10	30	—	—	(B) 0.18
SS2-18	18	12	30	36.0	40.0	20	10	30	—	—	(B) 0.20
SS2-19	19	12	31	38.0	42.0	20	10	30	—	—	(B) 0.22
SS2-20	20	12	32	40.0	44.0	20	10	30	—	—	(B) 0.22
SS2-21	21	12	34	42.0	46.0	20	10	30	—	—	(B) 0.28
SS2-22	22	12	36	44.0	48.0	20	10	30	—	—	(B) 0.30
SS2-23	23	12	37	46.0	50.0	20	10	30	—	—	(B) 0.32
SS2-24	24	12	38	48.0	52.0	20	10	30	—	—	(B) 0.35
SS2-25	25	12	40	50.0	54.0	20	10	30	—	—	(B) 0.40
SS2-26	26	12	42	52.0	56.0	20	10	30	—	—	(B) 0.42
SS2-27	27	12	45	54.0	58.0	20	10	30	—	—	(B) 0.47
SS2-28	28	12	45	56.0	60.0	20	10	30	—	—	(B) 0.50
SS2-29	29	12	47	58.0	62.0	20	10	30	—	—	(B) 0.58
SS2-30	30	12	50	60.0	64.0	20	10	30	—	—	(B) 0.59
SS2-32	32	12	50	64.0	68.0	20	10	30	—	—	(B) 0.64
SS2-34	34	12	50	68.0	72.0	20	10	30	—	—	(B) 0.74
SS2-35	35	12	52	70.0	74.0	20	10	30	—	—	(B) 0.75
SS2-36	36	12	55	72.0	76.0	20	10	30	—	—	(B) 0.80
SS2-38	38	12	55	76.0	80.0	20	10	30	—	—	(B) 0.90
SS2-40	40	15	55	80.0	84.0	20	10	30	—	—	(B) 0.93
SS2-42	42	15	55	84.0	88.0	20	10	30	—	—	(B) 1.0
SS2-44	44	15	55	88.0	92.0	20	10	30	—	—	(B) 1.1
SS2-45	45	15	55	90.0	94.0	20	10	30	—	—	(B) 1.1
SS2-46	46	15	55	92.0	96.0	20	10	30	—	—	(B) 1.2
SS2-48	48	15	55	96.0	100.0	20	10	30	—	—	(B) 1.3
SS2-50	50	15	55	100.0	104.0	20	10	30	—	—	(B) 1.4
SS2-52	52	15	55	104.0	108.0	20	10	30	—	—	(B) 1.5
SS2-54	54	15	55	108.0	112.0	20	10	30	—	—	(B) 1.6
SS2-55	55	15	55	110.0	114.0	20	10	30	—	—	(B) 1.6
SS2-56	56	15	55	112.0	116.0	20	10	30	—	—	(B) 1.7
SS2-58	58	15	60	116.0	120.0	20	10	30	—	—	(B) 1.8
SS2-60	60	15	60	120.0	124.0	20	10	30	—	—	(B) 1.9
SS2-62	62	15	60	124.0	128.0	20	10	30	—	—	(B) 2.0
SS2-64	64	15	60	128.0	132.0	20	10	30	—	—	(B) 2.1
SS2-65	65	15	60	130.0	134.0	20	10	30	—	—	(B) 2.3
SS2-66	66	15	60	132.0	136.0	20	10	30	—	—	(B) 2.4
SS2-68	68	15	60	136.0	140.0	20	10	30	—	—	(B) 2.6
SS2-70	70	15	60	140.0	144.0	20	10	30	—	—	(B) 2.6
SS2-72	72	15	60	144.0	148.0	20	10	30	—	—	(B) 2.7
SS2-75	75	20	60	150.0	154.0	20	10	30	—	—	(B) 2.9
SS2-76	76	20	60	152.0	156.0	20	10	30	—	—	(B) 3.1
SS2-80	80	20	60	160.0	164.0	20	10	30	—	—	(B) 3.0
SS2-84	84	20	70	168.0	172.0	20	10	30	12	136	(B) 3.6
SS2-85	85	20	70	170.0	174.0	20	10	30	12	140	(B) 3.0
SS2-88	88	20	70	176.0	180.0	20	10	30	12	146	(B) 3.4
SS2-90	90	20	70	180.0	184.0	20	10	30	12	150	(B) 3.4
SS2-95	95	20	70	190.0	194.0	20	10	30	12	166	(B) 3.7
SS2-100	100	20	70	200.0	204.0	20	10	30	12	176	(B) 3.8
SS2-120	120	20	90	240.0	244.0	20	10	30	12	210	(B) 6.2
SS2-150	150	25	240	300.0	304.0	20	10	30	—	—	(B) 14.5