

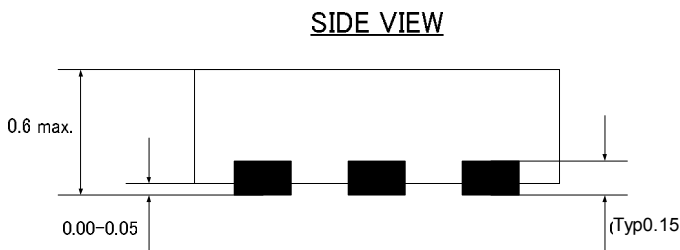
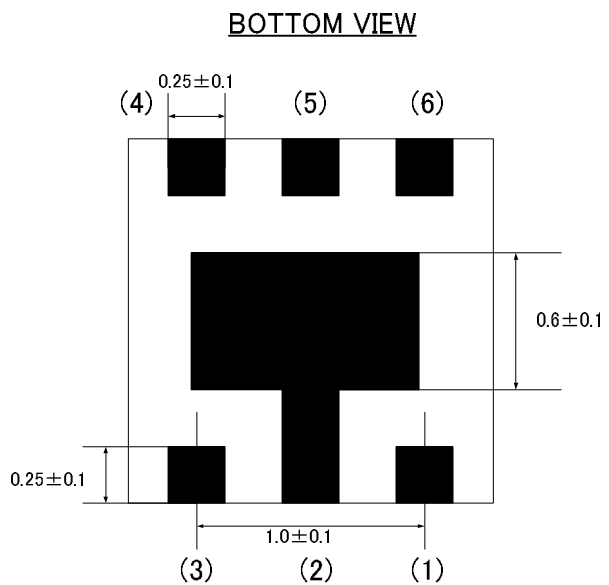
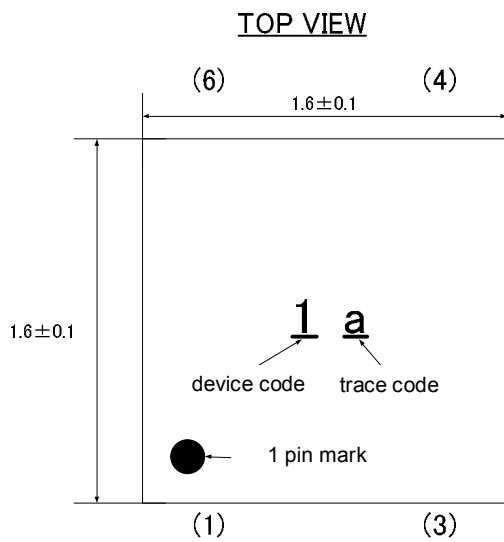
### 1. Application

- ESD Protection

### 2. Features

- IEC61000-4-2(ESD)  $\pm 15\text{kV}$ (air),  $\pm 10\text{kV}$ (contact)
- Low capacitance : 1.3pF typical
- Fast turn on and low clamping voltage
- For 4lines

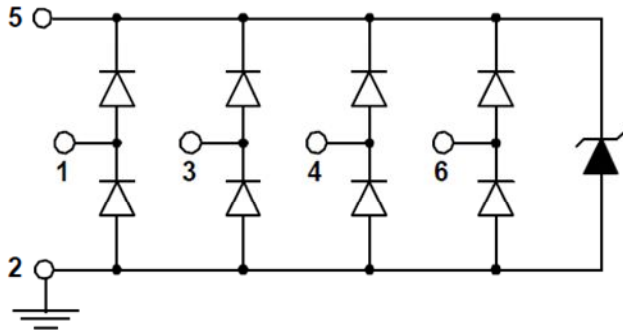
### 3. Mechanical details (dimensions : mm)



#### Pin configuration

No.	Terminal name
(1)	I/O 1
(2)	GND
(3)	I/O 2
(4)	I/O 3
(5)	VDD
(6)	I/O 4

#### 4. Schematic



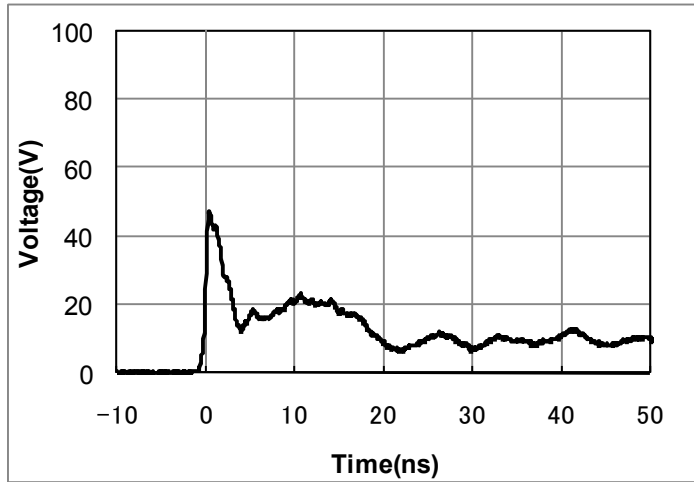
#### 5. Maximum Ratings

Rating	Symbol	Value	Units
Operating voltage(VDD-GND)	$V_{DC}$	6	V
ESD per IEC 61000-4-2 (air)	$V_{ESD}$	$\pm 15$	kV
ESD per IEC 61000-4-2 (contact)		$\pm 10$	
Lead Soldering Temperature	$T_{SOL}$	260(10sec.)	$^{\circ}C$
Operating Temperature	$T_{OP}$	-40 to +85	$^{\circ}C$
Storage Temperature	$T_{STO}$	-40 to +125	$^{\circ}C$

#### 6. Electrical characteristics (T=25 $^{\circ}C$ )

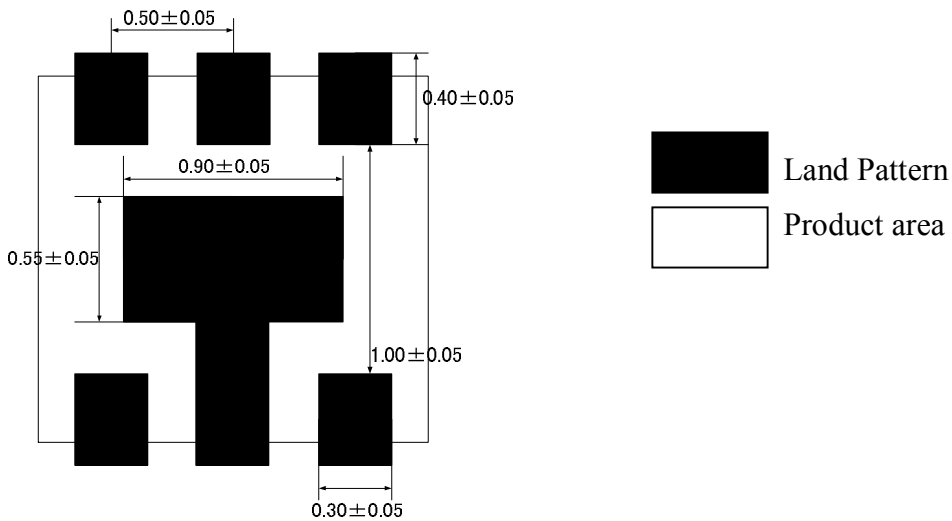
Parameter	Symbol	Conditions	Min	Typ	Max	Units
Leakage Current (I/O-GND)	$I_{Leak}$	$V_{pin5}=5V, V_{pin2}=0V, V_{CH}=0-5V$			1	$\mu A$
Breakdown Voltage	$V_{BV}$	$I_{BV} = 1mA$	6		9	V
Capacitance (I/O-GND)	$C_{IN}$	$V_{pin5} = 5V, V_{pin2} = 0V, V_{IN} = 2.5V,$ $f = 1MHz$		1.3		pF

### 7. Typical Characteristics



ESD Waveform (IEC61000-4-2 : 8kV Contact)

### 8. Soldering Footprint ( dimensions : mm)

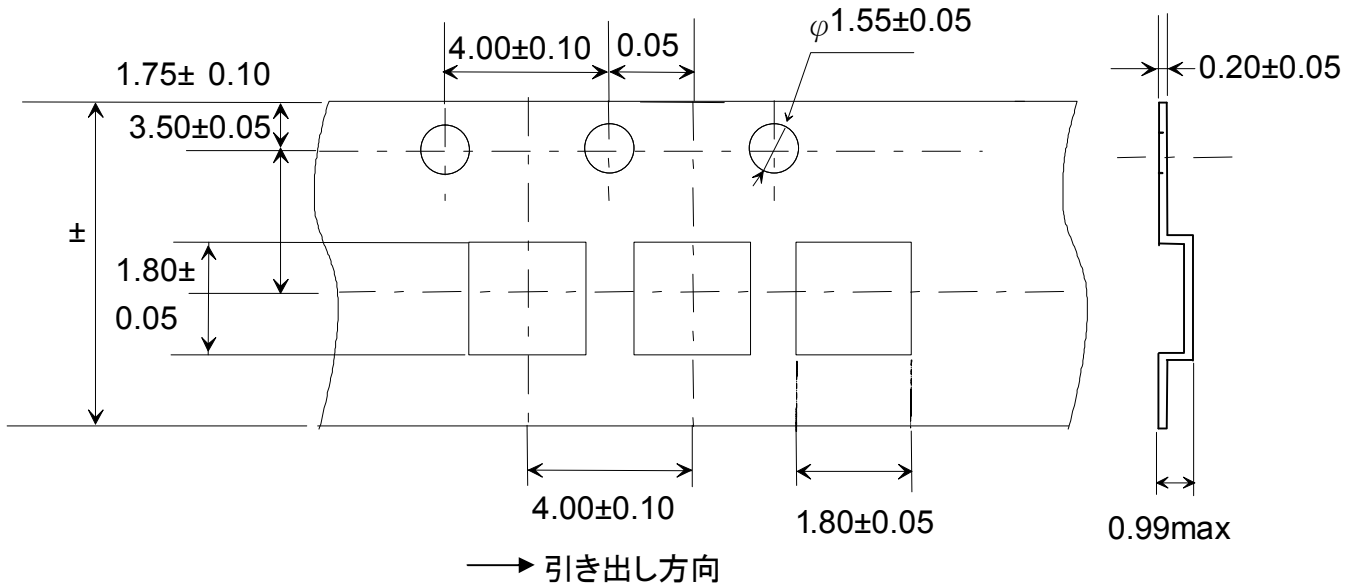


Notes : this land layout is for reference purpose only.

### 9. Taping Specification

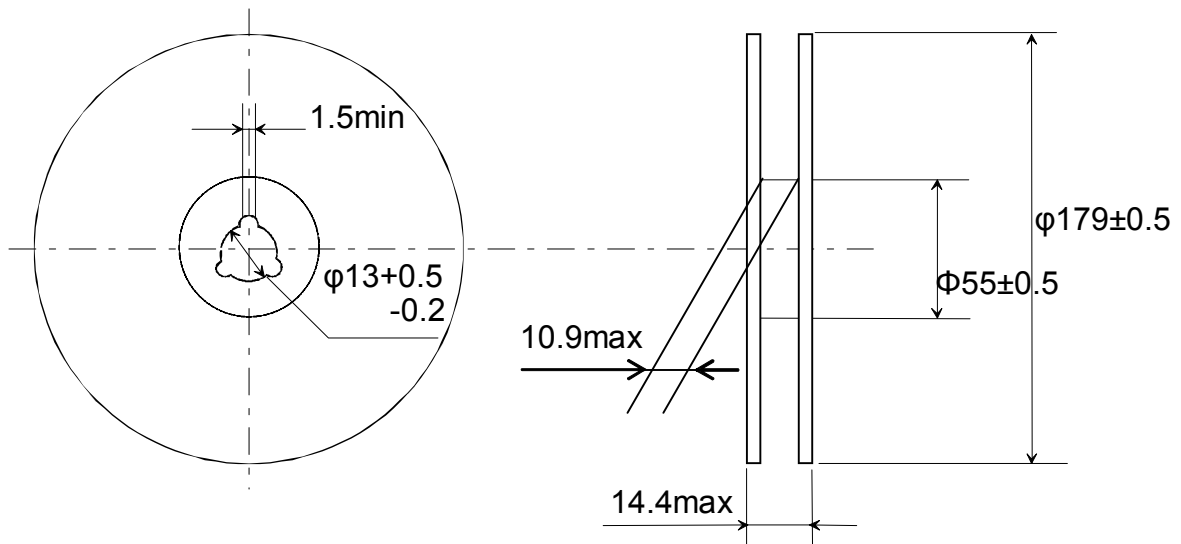
#### 1) Dimensions of Tape (Plastic tape)

(in mm)



#### 2) Dimensions of Reel

(in mm)



#### 3) Packaging unit: 3000 pcs / reel