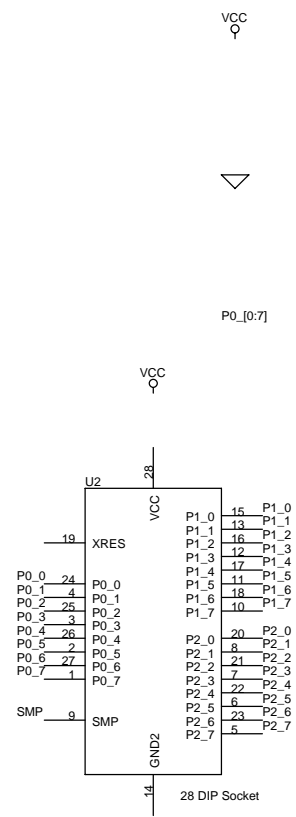
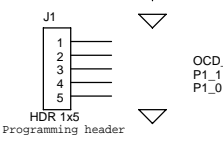
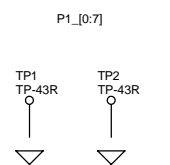


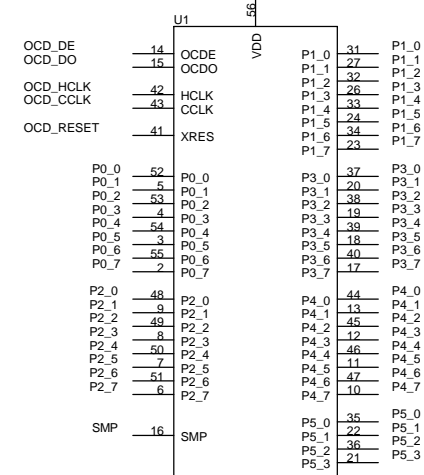
NOTE: RJ45 pinout assumes a straight-through connector will be used.



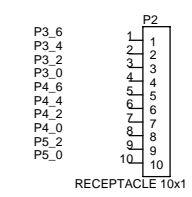
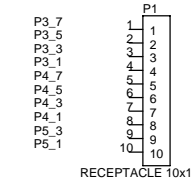
28 DIP Socket



Test points



CY8C27002-24PVI



PCB: PDCR-9310 REV*A
PCA: 121R-31000 REV*A

CYPRESS SEMICONDUCTOR © 2005		
Title CY8C27002 28 PDIP Module		
Size B	Document Number REF-13445	Rev *A
Date: Monday, May 22, 2006	Sheet 1	of 1

4

3

2

1

D

C

B

A

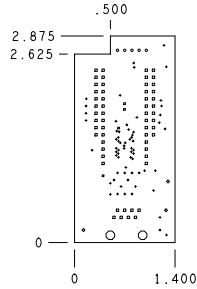
D

C

B

A

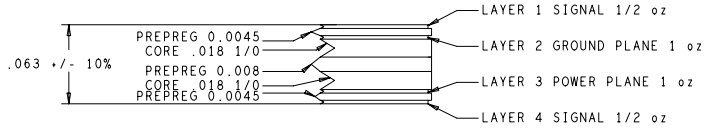
REVISIONS			
REV	DESCRIPTION	DATE	APPROVED
**	RELEASE FOR MANUFACTURING	03/20/06	DFK



DRILL CHART				
ALL UNITS ARE IN MILS				
FIGURE	SIZE	TOLERANCE	PLATED	QTY
.	10.0	+0.003 -0.010	PLATED	65
.	20.0	0.003	PLATED	4
.	35.0	0.003	PLATED	56
.	40.0	0.003	PLATED	5
.	43.0	0.003	PLATED	3
○	128.0	0.003	NON-PLATED	2

NOTES: UNLESS OTHERWISE SPECIFIED

- MATERIAL:
 - EPOXY GLASS LAMINATE AND PREPREG, TYPE FR-4.
 - USE HTE COPPER 1/2 oz., COPPER FOIL EXTERNAL LAYERS AND 1 oz., COPPER FOIL FOR INTERNAL LAYERS, UNLESS OTHERWISE SPECIFIED IN STACK VIEW.
 - OVERALL METAL TO METAL THICKNESS .063 +/- 10%
- DRILLING:
 - DIAMETERS IN DRILL TABLE ARE FINISHED HOLE SIZES +/- .003, UNLESS OTHERWISE SPECIFIED IN DRILL TABLE.
 - TEARDROP ALLOWED ON ENTRY OF VIA ON EVERY TRACE LAYER.
- PLATING:
 - COPPER PLATING IN THRU-HOLES .001 min.
- MARKING:
 - SILKSCREEN IN WHITE NON-CONDUCTIVE EPOXY INK ON PRIMARY SIDE OF THE BOARD OR BOTH SIDES IF APPLICABLE.
 - FABRICATOR TO ETCH DATE CODE AND LOGO ON SECONDARY SIDE.
- FINAL FABRICATION:
 - SOLDERMASK PRIMARY AND SECONDARY SIDE OF BOARD USING LIQUID PHOTOIMAGABLE MASK MATERIAL OVER BARE COPPER PER IPC-SM-840. MASK ARTWORKS PROVIDED ARE 1:1 SOLDERMASK COLOR **GREEN**.
- WHEN REQUIRED, COPPER FINISH SHALL BE FINISHED TIN-LEAD (60-40 MIN) HASL.
- BOARDS SHALL BE PURCHASED FROM UL RECOGNIZED VENDORS ONLY AND SHALL BE MARKED IN COPPER ON SECONDARY SIDE OF BOARD WITH VENDORS UL IDENTIFICATION, FLAMABILITY RATING (94-V0), AND DATE CODE (WWYY).
- MANUFACTURE BOARD TO BE IN ACCORDANCE WITH PERFORMANCE STANDARD IPC-6011/6012 CLASS 2 BOARD TO BE INSPECTED PER IPC-600-A CLASS 2.
- MAXIMUM WRAP OR TWIST SHALL NOT EXCEED .010 in/in.



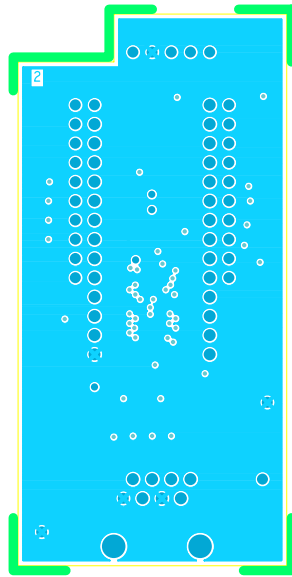
UNLESS OTHERWISE SPECIFIED DIMENSIONS ARE IN INCHES TOLERANCES ON: 2 PL DECIMALS +/- .010 3 PL DECIMALS +/- .005 THIRD ANGLE PROJECTIONS	SIGNATURES		DATE		12230 World Trade Drive #200 San Diego, CA 92128 (858) 613-7931
	DRAWN ZMK		03/13/06		
	CHECKED ECU		03/20/06		
	ENGRG DFK		03/20/06		
ISSUED				FABRICATION DRAWING CY3210-27002 POD MODULE DESIGN	
CYPRESS PROPRIETARY THIS DOCUMENT CONTAINS CONFIDENTIAL, PROPRIETARY INFORMATION THAT IS CYPRESS SEMICONDUCTOR PROPERTY. DO NOT DISCLOSE TO OR DUPLICATE FOR OTHERS EXCEPT AS AUTHORIZED BY CYPRESS.		SIZE C	FSCM NO	DWG NO PDC-9310	REV **
SCALE: 1/1				SHEET: 1 OF 1	

4

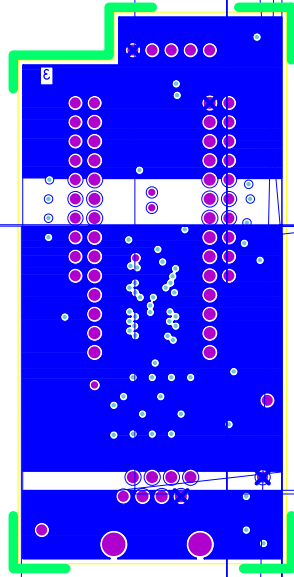
3

2

1



PDC-9310 REV** LAYER 2 GND



PDC-9310 REV** LAYER 3 VCC

BDC-0310 REV ** SECONDARY SIDE

BDC-0310 REV ** SECONDARY SILKSCREEN

