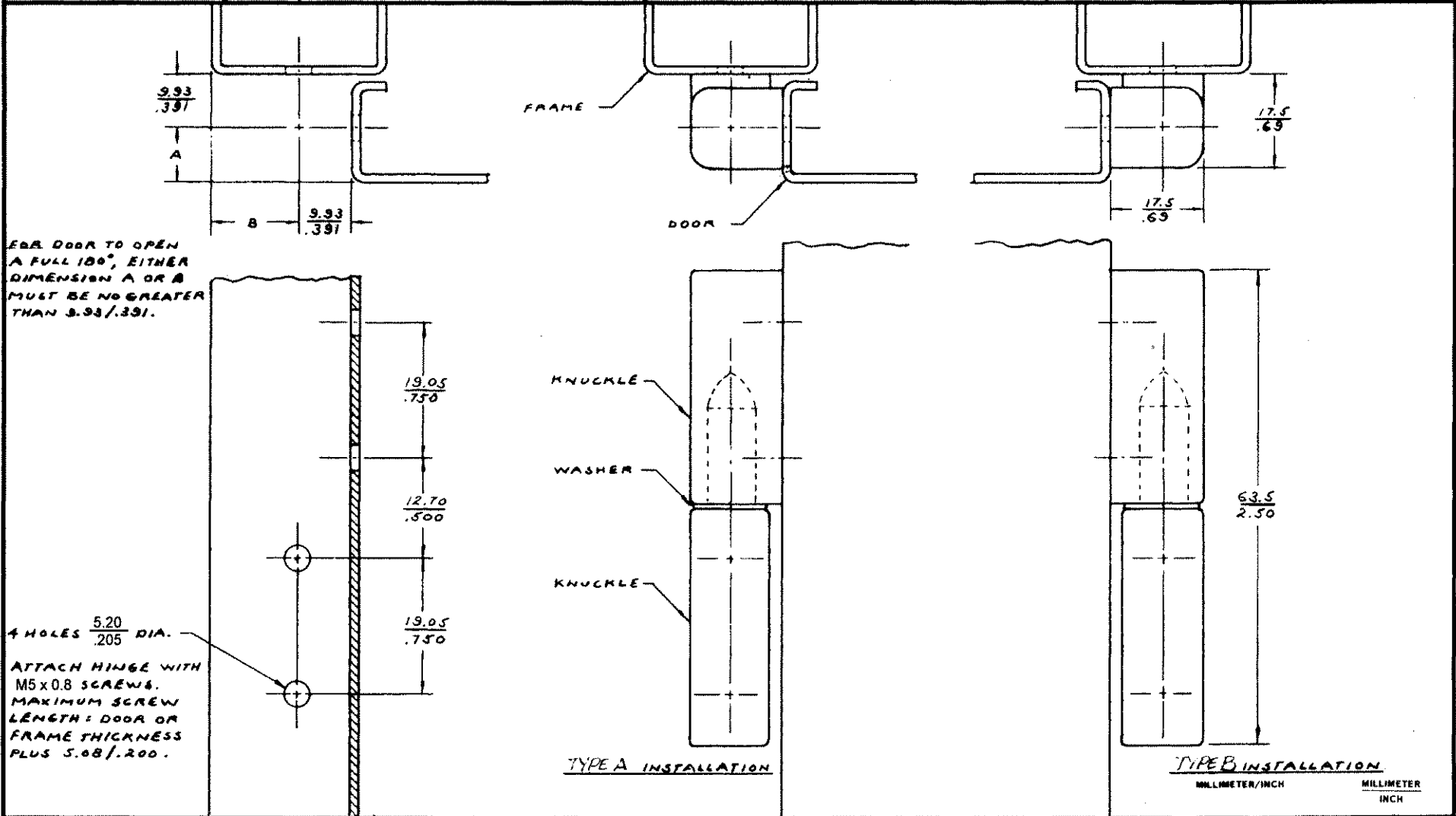




SOUTHCO N<sup>o</sup> 96 LIFT-OFF HINGE  
IN LINE STYLE

DATE	DRAWN	CHKD	SCALE	DRAWING NUMBER
1-7-87	RHA		NTS	J-96-50-500-50

REV. LET.	DATE	BY-CHKD	REVISIONS	ITEM	PART N <sup>o</sup>	MATERIAL	FINISH
A	9-18-87	SS	PRN: 96-19	ASSEMBLY	96-50-500-50	---	---
B	1-8-88	MN	PRN: 96-22 (205 WAS 201)	KNUCKLES	---	ZINC	BLACK POWDER COATED
C	5-15-91	SS	PRN: 96-36	WASHER	---	NYLON	BLACK
E	12 JAN 93	JC	PRN: 5-1-03				
F	25 MAR 93	SS	PRN: 96-52				



PROPRIETARY ITEM - EXCEPT FOR USES EXPRESSLY GRANTED IN WRITING, INFORMATION DISCLOSED HEREON IS CONFIDENTIAL AND ALL RIGHTS, PATENT AND OTHERWISE, ARE RESERVED BY SOUTHCO, INC.

DRAWING NUMBER  
J-96-50-500-50