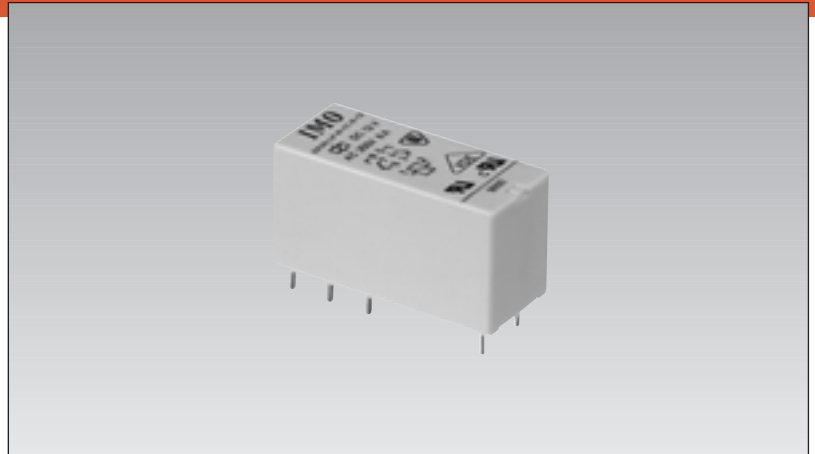
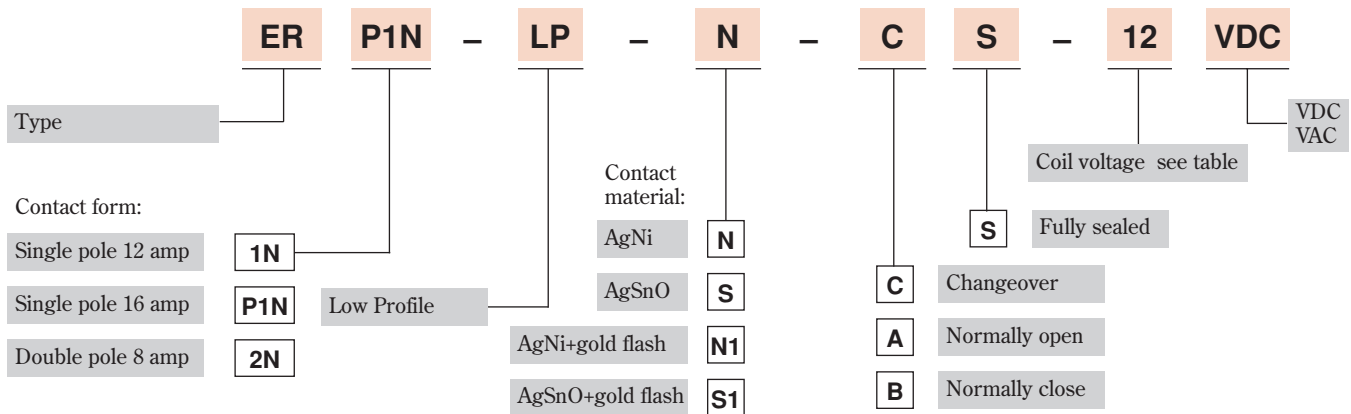


- SPDT 12 and 16 amps, DPDT 8 amps
- Low profile power relay (height 15.7mm)
- AC and DC coil voltages
- 400mW coil
- Insulation distance: 10mm (between coil and contact)
- Dielectric strength: 5kV (between coil and contact)
- Fully sealed
- UL/CSA recognised



Options and ordering codes



Contact rating

Type	ER1N-LP	ER2N-LP	ERP1N-LP
Contact form	1C (SPDT)	2C (DPDT)	1C (SPDT)
Contact rating	Maximum switching power	2500VA, 288W	4000VA, 384W
	Maximum switching voltage	250/400VAC, 250VDC	250/400VAC, 250VDC
	Maximum switching current	12A	8A
	Maximum carrying current	12A	8A

Specifications

Initial contact resistance	50mΩ maximum
Nominal operating power	400mW approximately DC, 0.75VA approximately AC
Operate time (excluding bounce) – at nominal voltage	9ms maximum single pole, 7ms maximum double pole
Release time (excluding bounce) – at nominal voltage	6ms maximum single pole, 4ms maximum double pole
Insulation resistance	>10 ⁹ MΩ at 500VDC
Breakdown voltage	Between open contacts
	Between coil and contacts
	Between adjacent contact sets
Coil/contacts creepage/clearance	>10mm
Insulation requirements to VDE 0110	C/250: B/400
Shock resistance NO/NC	10/5G
Vibration resistance 10-150Hz	10G
Ambient temperature	-40°C to +70°C
Life expectancy	Mechanical
	Electrical
Weight	Approximately 14 gms

Coil specification VDC

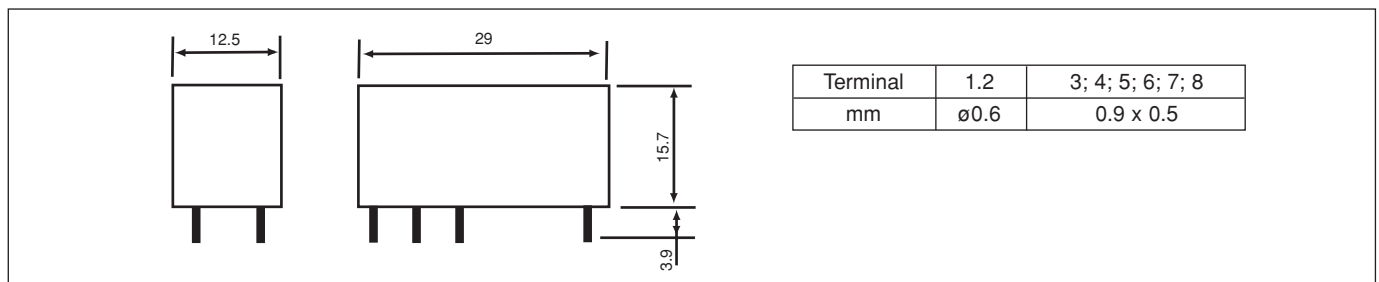
Rated voltage VDC	Rated current $\pm 10\%$ at 20°C (mA)	Coil resistance $\pm 10\%$ at 20°C (Ω)	Pick up voltage (Max) at 20°C	Drop out voltage (Min) at 20°C	Power consumption at rated load
5	80	63	70% of Rated Voltage	10% of Rated Voltage	Approx. 400mW
6	66	91			
12	32	370			
24	16	1440			
48	8	5600			
60	7	8400			
110	4	25200			

Maximum continuous voltage at 70°C: 150%

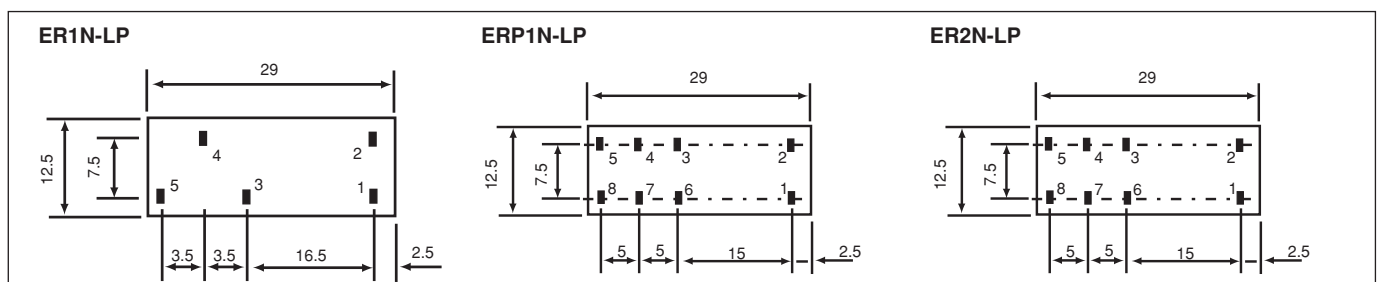
Coil specification VAC

Rated voltage VAC	Coil resistance (Ohm)	Coil current (mA)		Coil inductance (H)		Coil operating range (VAC)		Power consumption (VA)	
		Armature ON	Armature OFF	Armature ON	Armature OFF	Min (at 20°C)	Max (at 20°C)	Armature ON	Armature OFF
24	388	32.1	45.4	2.0	1.1	19.2	26.4	0.77	1.09
48	1476	16.2	24.0	8.2	4.3	38.4	52.8	0.78	1.15
60	2451	12.0	18.6	13.9	6.7	48.0	66.0	0.72	1.12
110	8727	6.5	10.1	46.2	20.8	88.0	121.0	0.72	1.11
115	9271	6.3	9.6	50.1	24.2	92.0	126.5	0.72	1.10
120	9792	6.2	9.5	53.2	25.4	96.0	132.0	0.74	1.14
220	32767	3.4	5.2	177.7	85.2	176.0	242.0	0.75	1.14
230	37380	3.2	4.9	195.5	90.4	184.0	253.0	0.74	1.13
240	38695	3.2	4.8	204.6	100.8	192.0	264.0	0.77	1.15

Outline dimensions mm



PCB layout



Wiring diagram

