

ISSUE	DATE
01	1/12/99

TOLERANCES  
(UNLESS OTHERWISE STATED)

0.00	0.0	0
0.1mm	0.25mm	1mm

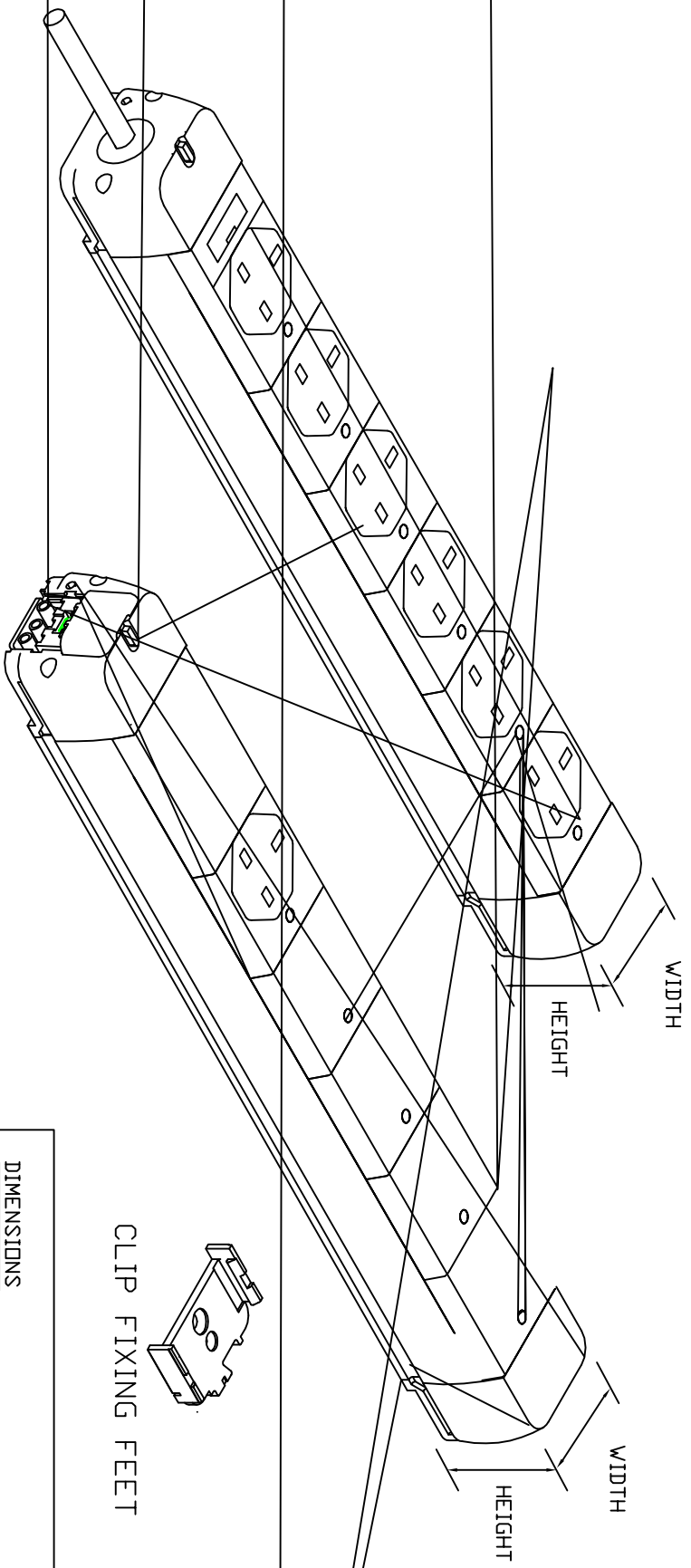
THIS IS A CAD GENERATED  
PLOT. REFER TO COMPUTER  
FILE FOR MASTER

DESCRIPTION	DRAWING NUMBER	DRAWN BY	CHECKED
DB2000 FUSED HORIZONTAL PDU'S	GA0064	RJK	HGH

THIS DRAWING IS THE PROPERTY OF APHEL LIMITED. REPRODUCTION WHOLLY OR IN PART PROHIBITED © APHEL LIMITED

WHITE PVC CABLE  
TERMINATED IN  
A BS1363 PLUG

ST18 CONNECTION  
SYSTEM



CLIP FIXING FEET

DO NOT SCALE

DIMENSIONS		
	WIDTH	HEIGHT
	62mm	52mm
	HEIGHT INCLUDING	56mm
	FIXING FOOT	
OVERALL LENGTH		
CABLED	ST18	OTHER NUMBERS OF WAYS CAN BE CALCULATED USING 59.1mm INCREMENTS
4 WAY	338.9mm	350.9mm
5 WAY	398.0mm	410.0mm
6 WAY	457.1mm	469.1mm
7 WAY	516.2mm	528.2mm
8 WAY	575.3mm	587.3mm
9 WAY	634.4mm	646.4mm
10 WAY	693.5mm	705.5mm

