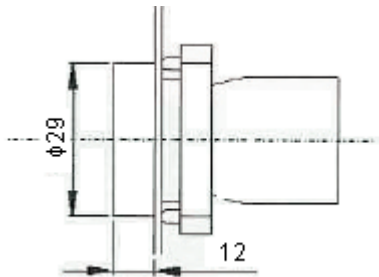


2mm Push Button Switches

Head and Collar



General Characteristics

Products	Push buttons, selector switches, latching mushroom head push buttons, pilot lights and illuminated push buttons
Reference standard	IEC 947-5-1/EN 60947-5-1, UL 508, CSA C-22-2 n° 14
Approval	
Protection degree	IP 65 according to IEC 947-1
Pollution degree	3
Temperature	-40°C ~ +70°C (storage) -25°C ~ +70°C (working)
Vibration resistance	Mushroom head push buttons: 8gn Other push buttons and pilot lights: 15gn (40 to 500Hz) conforming to IEC 68-2-6
Shock resistance	Push buttons : 70gn Mushroom head push buttons : 15gn Selector switches : 200gn Conforming to IEC 68-2-27
Working position	All working positions are allowed
Mechanical life	Push buttons and selector switches 1 million operations, emergency mushroom push buttons 300,000 operations

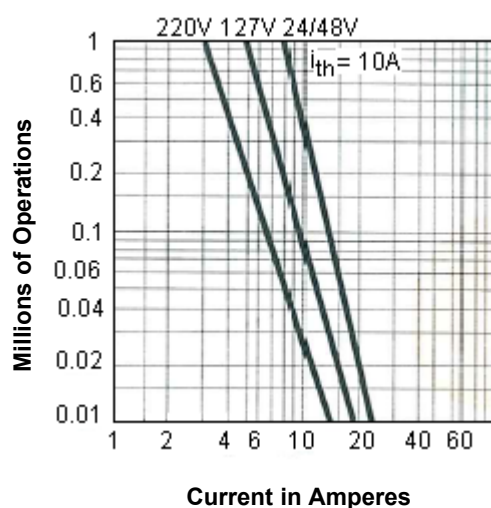
2mm Push Button Switches

Head and Collar



Contact Elements Characteristics

Rated thermal current	I_{th} 10A
Rated insulation Voltage	U_i 500V conforming to IEC 947, UL 508 and CSA 22-2 n° 14
Insulation category	Group C conforming to NF C20-040, VDE 0110
Operating force	Push buttons- 1 'NO' = 10N, 1 'NC' = 8N Additional contacts- 'NO' = +5N, 'NC' = +3N
Dielectric strength	2.5KV for 1 minute
Insulation resistance	2M Ω minimum (500 V dc)
Initial contact resistance	$\leq 25m\Omega$
Shot circuits protection	10A 500V, cartridge fuse gl or N conforming to IEC 337-1
Terminal reference	Conforming to CENELEC EN 50013
Connections	On screw with non losable plate lamp sec. 2.5mm ² maximum (14AWG)
Contact operation	Self cleaning type, slow action, positive opening
Operation frequency	3600 operations per hour
Utilization category	AC 15 (DC 13)
Rated power Conforming to IEC 947-5-1 Load factor : 0.5 AC supply (50/60 Hz)	DC supply Power broken in watts for 1 million operations Voltage : 24V 48V 120V Inductive load : 65W 48W 40W



2mm Push Button Switches

Head and Collar



AC Ratings, Inductive - NEMA A600

35% Power Factor

Volts	Makes Amperes	VA	Break Amperes	VA	Continuous Carrying Amperes	Resistive 75% Power Factor Make, Break and Continuous Amperes
120	60	7200	6	720	10	10
240	30		3			
480	15		1.5			
600	12		1.2			

DC Ratings, NEMA Type Q600

Inductive and Resistive

Volts	Make and Break	Continuous
125	55	2.5
250	0.27	
600	0.10	

Part Number Table

Description	Part Number
22mm Switches Flush White	RCB2-BA1
22mm Switches Flush Black	RCB2-BA2
22mm Switches Flush Green	RCB2-BA3
22mm Switches Flush Red	RCB2-BA4
22mm Switches Flush Amber	RCB2-BA5
22mm Switches Flush Blue	RCB2-BA6

Disclaimer This data sheet and its contents (the "Information") belong to the Premier Farnell Group (the "Group") or are licensed to it. No licence is granted for the use of it other than for information purposes in connection with the products to which it relates. No licence of any intellectual property rights is granted. The Information is subject to change without notice and replaces all data sheets previously supplied. The Information supplied is believed to be accurate but the Group assumes no responsibility for its accuracy or completeness, any error in or omission from it or for any use made of it. Users of this data sheet should check for themselves the Information and the suitability of the products for their purpose and not make any assumptions based on information included or omitted. Liability for loss or damage resulting from any reliance on the Information or use of it (including liability resulting from negligence or where the Group was aware of the possibility of such loss or damage arising) is excluded. This will not operate to limit or restrict the Group's liability for death or personal injury resulting from its negligence. SPC Multicomp is the registered trademark of the Group. © Premier Farnell plc 2009.

<http://www.farnell.com>
<http://www.newark.com>
<http://www.cpc.co.uk>

