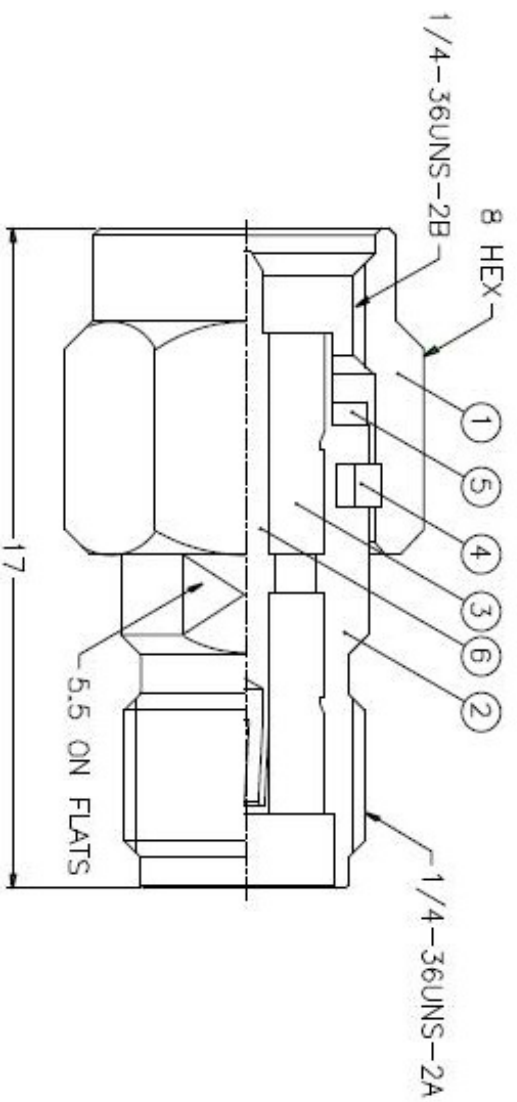


REVISIONS	
ISS	DESCRIPTION \ PER REQUEST \ DATE
1	



NOTES: FINISH (PLATING THICKNESS IN MICRO-INCHES)

1. BRASS PER QQ-B-626
2. GOLD PL. 3 MIN. THICK OVER NICKEL PL. 100 MIN. THICK OVER COPPER STRIKE
3. BERYLLIUM COPPER PER QQ-C-530
4. GOLD PL. 50 MIN. THICK OVER NICKEL PL. 100 MIN. THICK OVER COPPER STRIKE
5. PTFE MIL-P-19498

NO.	DESCRIPTION	MATERIAL	FINISH	Q'TY	DRAWING NO.
6	CONTACT PIN	NOTE 3	NOTE 4	1	SMA5071A1-6
5	GASKET	SILICONE	RED	1	GS-6/43X06
4	RETAINER RING	NOTE 3	NATURAL	1	SMA5000-4-B
3	INSULATOR	NOTE 5	NATURAL	2	SMA5071A1-ST-50
2	BODY	NOTE 1	NOTE 2	1	SMA5071A1-2
1	SHELL	NOTE 1	NOTE 2	1	SMA5000-1-C

DIMENSIONS ARE IN MILLIMETERS
UNLESS OTHERWISE SPECIFIED

TOLERANCES

0.5-6 = ±0.2
6-30 = ±0.4
30-120 = ±0.6
120-315 = ±1
315-1000 = ±1.6
1000-2000 = ±2.4

PART NO.	SMA5071A1-3GT50G-50
APPROVED	DATE 10-11-01'
CHECKED	DATE 10-11-01'
DRAWN	DATE 10-11-01'
SCALE	5/1
ISSUE	A
FILE NO.	

TITLE	SMA MALE TO FEMALE ADAPTOR
DRAWING NO.	KJ-SMA5071A1-3GT50G-50
ITEM NO.	

Amphenol