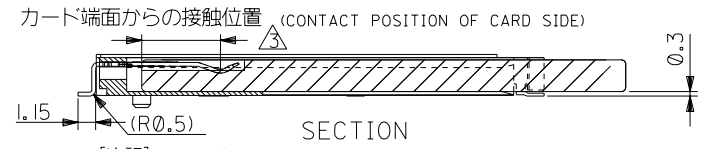
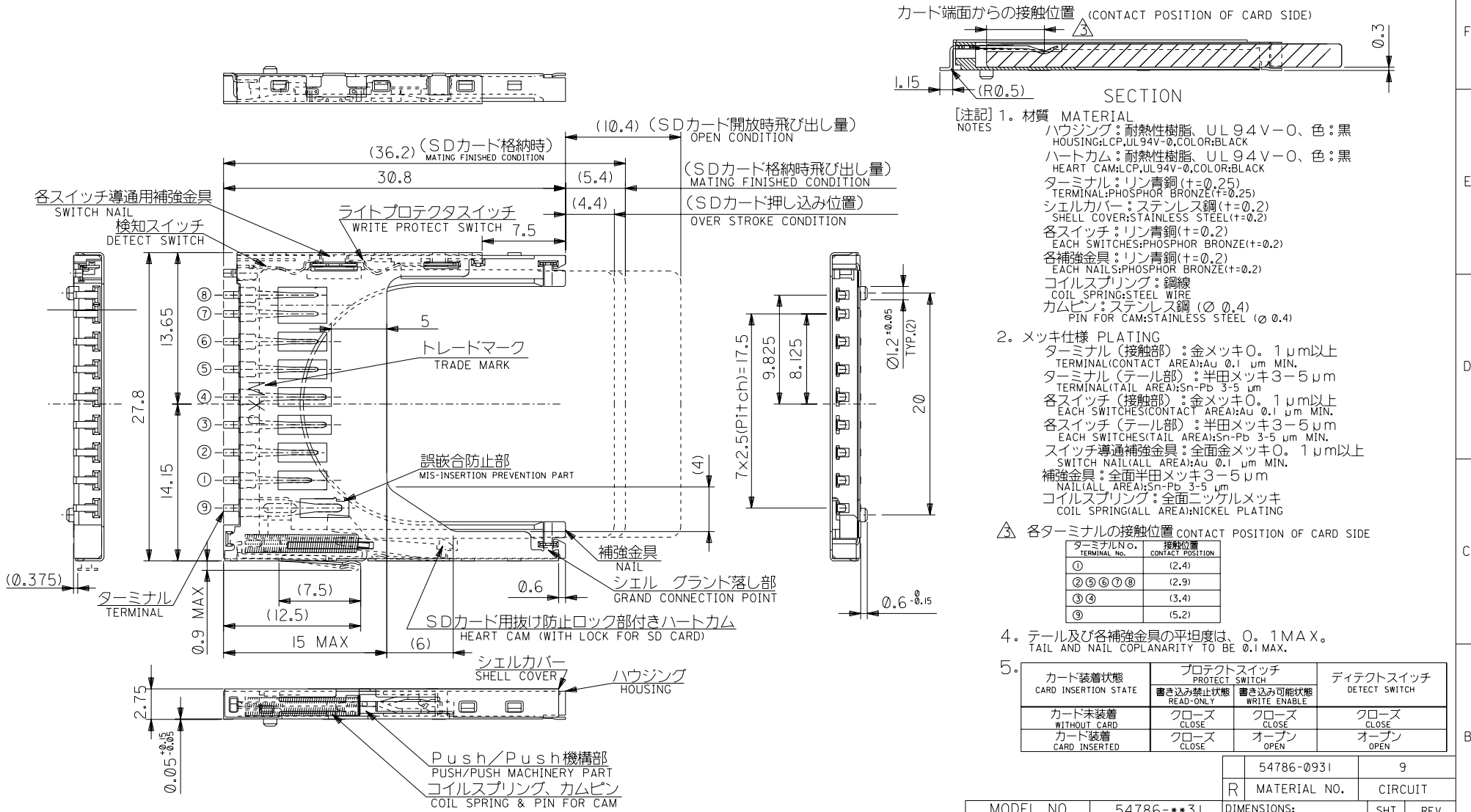


REFERENCE SALES DRAWING FOR ADDITIONAL DIMENSIONS



SECTION

[注記] 1. 材質 MATERIAL
 NOTES
 ハウジング: 耐熱性樹脂, UL 94V-0, 色: 黒
 HOUSING: CP, UL 94V-0, COLOR: BLACK
 ハートカム: 耐熱性樹脂, UL 94V-0, 色: 黒
 HEART CAM: CP, UL 94V-0, COLOR: BLACK
 ターミナル: リン青銅 (+0.25)
 TERMINAL: PHOSPHOR BRONZE (+0.25)
 シェルカバー: ステンレス鋼 (+0.2)
 SHELL COVER: STAINLESS STEEL (+0.2)
 各スイッチ: リン青銅 (+0.2)
 EACH SWITCHES: PHOSPHOR BRONZE (+0.2)
 各補強金具: リン青銅 (+0.2)
 EACH NAILS: PHOSPHOR BRONZE (+0.2)
 コイルスプリング: 鋼線
 COIL SPRING: STEEL WIRE
 カムピン: ステンレス鋼 (φ 0.4)
 PIN FOR CAM: STAINLESS STEEL (φ 0.4)

2. ヌッキ仕様 PLATING
 ターミナル (接触部): 金メッキ 0.1 μm 以上
 TERMINAL (CONTACT AREA): Au 0.1 μm MIN.
 ターミナル (テール部): 半田メッキ 3-5 μm
 TERMINAL (TAIL AREA): Sn-Pb 3-5 μm
 各スイッチ (接触部): 金メッキ 0.1 μm 以上
 EACH SWITCHES (CONTACT AREA): Au 0.1 μm MIN.
 各スイッチ (テール部): 半田メッキ 3-5 μm
 EACH SWITCHES (TAIL AREA): Sn-Pb 3-5 μm MIN.
 スイッチ導通補強金具: 全面金メッキ 0.1 μm 以上
 SWITCH NAIL (ALL AREA): Au 0.1 μm MIN.
 補強金具: 全面半田メッキ 3-5 μm
 NAIL (ALL AREA): Sn-Pb 3-5 μm
 コイルスプリング: 全面ニッケルメッキ
 COIL SPRING (ALL AREA): NICKEL PLATING

△ 各ターミナルの接触位置 CONTACT POSITION OF CARD SIDE

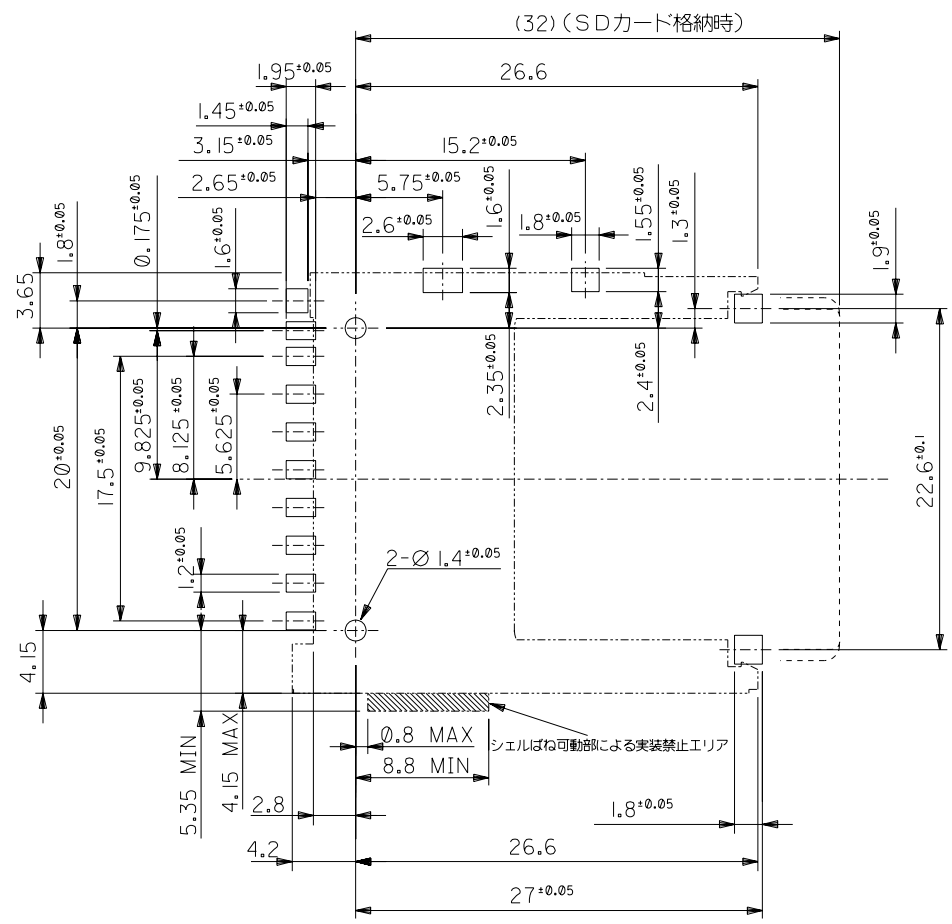
ターミナル No. TERMINAL NO.	接触位置 CONTACT POSITION
①	(2.4)
②③⑥⑦⑧	(2.9)
③④	(3.4)
⑨	(5.2)

4. テール及び各補強金具の平坦度は、0.1 MAX.
 TAIL AND NAIL COPLANARITY TO BE 0.1 MAX.

5.

カード装着状態 CARD INSERTION STATE	プロテクトスイッチ PROTECT SWITCH 書き込み禁止状態 READ-ONLY	書き込み可能状態 WRITE ENABLE	ディテクトスイッチ DETECT SWITCH
カード未装着 WITHOUT CARD	クローズ CLOSE	クローズ CLOSE	クローズ CLOSE
カード装着 CARD INSERTED	クローズ CLOSE	オープン OPEN	オープン OPEN

①64 NO. DRWN: CH'K: APPR:	①63 NO. DRWN: CH'K: APPR:	①62 NO. DRWN: CH'K: APPR:	①61 NO. DRWN: CH'K: APPR:	RELEASED '02/04/19 ①60 NO. J2002-2674 DRWN: Y.MATSUMOTO CH'K: M.TOMITA APPR: M.SASAO	MATERIAL 材料 注記参照	GENERAL TOLERANCES: (UNLESS SPECIFIED) 一般公差	SCALE 3-1 DESIGN UNITS <input checked="" type="checkbox"/> mm <input type="checkbox"/> INCH	MODEL NO. 54786-**31	DIMENSIONS: <input type="checkbox"/> mm <input type="checkbox"/> INCH <input type="checkbox"/> mm <input checked="" type="checkbox"/> INCH ONLY	SHT 9 REV			
WIRE RANGE 適用電線範囲 // INS. RANGE 被覆外径 //					FINISH 仕上げ //	10 UNDER 未満 ±0.2 10 OVER 以上 30 UNDER 未満 ±0.25 30 OVER 以上 ±0.3	DRAWN BY & DATE Y.MATSUMOTO '02/04/19	TITLE: SD CARD CONN. (PUSH/PUSH & REVERSE)	MOLEX MOLEX INCORPORATED	CAD FILENAME 54786014.S01	MATERIAL NO. SEE CHART	DRAWING NO. SD-54786-014	SHEET NO. 1 OF 2
①888 DRAWING CONTAINS INFORMATION THAT IS PROPRIETARY TO MOLEX INCORPORATED AND SHOULD NOT BE USED WITHOUT WRITTEN PERMISSION.													



DO NOT SCALE DRAWING


EC NO. DRWN: CHK: APPR:	EC NO. DRWN: CHK: APPR:	EC NO. DRWN: CHK: APPR:	EC NO. DRWN: CHK: APPR:	EC NO. DRWN: CHK: APPR:	EC NO. J2002-2674 DRWN: Y.MATSUMOTO CHK: M.TOMITA APPR: M.SASAO
----------------------------------	----------------------------------	----------------------------------	----------------------------------	----------------------------------	--

DESCRIPTION	MATERIAL 材料	FINISH 仕上り	WIRE RANGE 適用層線範囲	INS. RANGE 被覆外径
	//	//	//	//

GENERAL TOLERANCES: (UNLESS SPECIFIED) 一般公差		SCALE 3-1	DESIGN UNITS mm INCH
10 UNDER 未満	±0.2	DRAWN BY & DATE Y.MATSUMOTO '02/04/19	
10 OVER 30 UNDER 以上 未満	±0.25	CHECKED BY & DATE M.TOMITA '02/04/19	
30 OVER 以上	±0.3	APPROVED BY & DATE M.SASAO '02/04/19	
ANGLE 角度	±3°	CAD FILENAME 54786014.S02	

MODEL NO. 54786-***31	DIMENSIONS: mm INCH mm ONLY	SHT	REV
THIRD ANGLE PROJECTION	mm INCH		REVISE ON CAD ONLY
TITLE: SD CARD CONN. (PUSH/PUSH & REVERSE) P.C.BOARD PATTERN DIMENSION		MATERIAL NO. DRAWING NO. SD-54786-014	
MOLEX INCORPORATED		SHEET NO. 2 OF 2	
THIS DRAWING CONTAINS INFORMATION THAT IS PROPRIETARY TO MOLEX INCORPORATED AND SHOULD NOT BE USED WITHOUT WRITTEN PERMISSION.		SIZE B	

F
E
D
C
B
A



RELATED LINKS

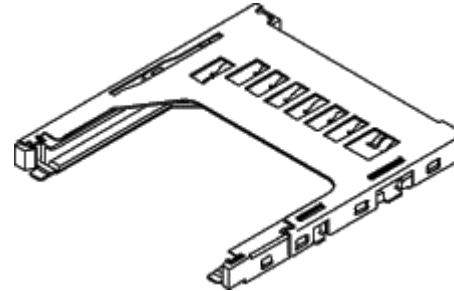
- [Datasheet](#)
- [Part Details and Drawings](#)

DELIVERING INNOVATIVE SOLUTIONS, THE WORLD OVER


[Main Page](#) : [Focus](#) : [Products](#) : [Products](#) : [Technical Refs](#) : [Press Releases](#) : [About Molex](#) : [Applications](#)

Part Details and Drawings

SD Memory Card Connectors
2.50mm (.098") Pitch SD Memory Card Connector,
Reverse-Mount Type, Ultra Low Profile
54786

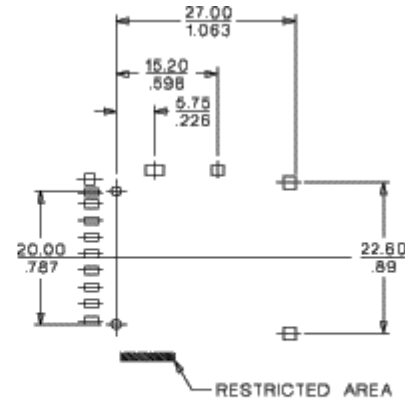
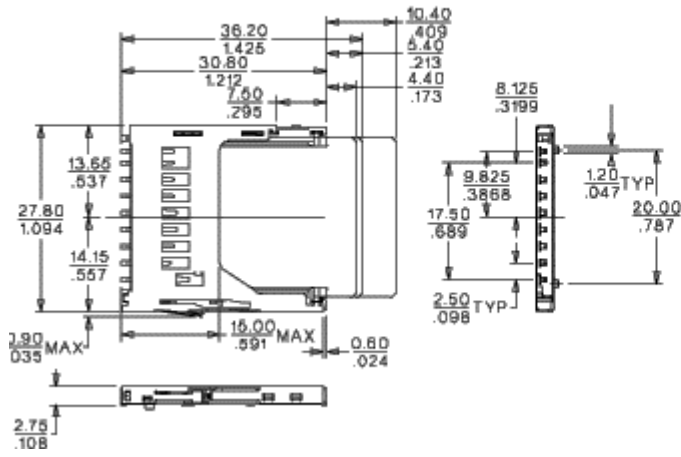


Number of Molex Parts for Series 54786: 2 Displaying parts 1 to 2

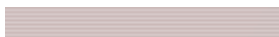
DOCUMENTS

PART INFORMATION

Sales Drawing(PDF)	Molex Part No	Circuits / Positions	Packaging	
SD	54786-0931	9	Tray	Active
SD	54786-0991	9	Embossed Tape	Active



REFERENCE SALES DRAWING FOR ADDITIONAL DIMENSIONS



[Contact Us](#) | [^Top](#)