

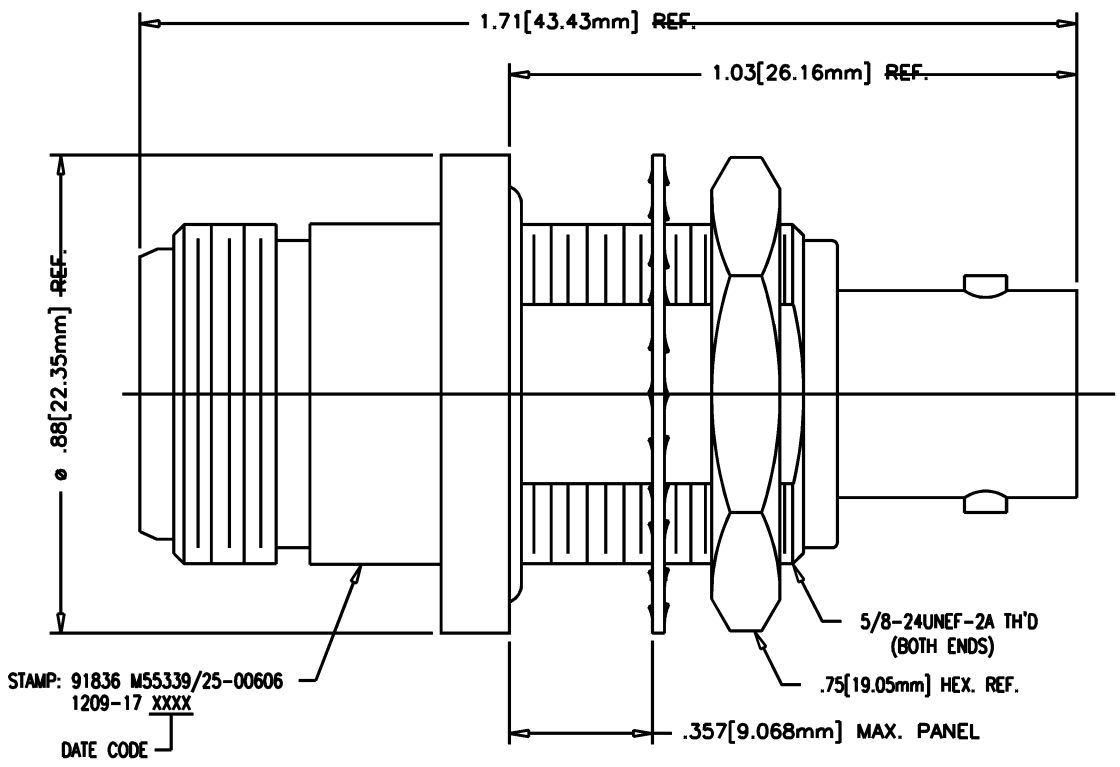
DASH NO.	M CODE	MADE FROM
----------	--------	-----------

# GSD

M55339/25-00606

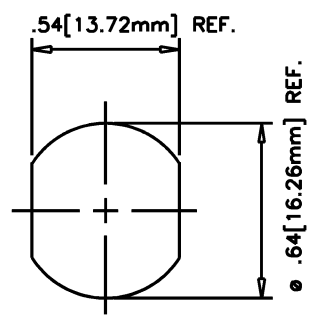
**REVISIONS**

ISSUE	CHANGES
10	CN 40065 C REDRAWN DRK 09/06/07



**NOTES:**

- 1. MATERIALS:**  
 CENTER CONTACT: BER. COOPER, ASTM-B196  
 O-RING: SYNTHETIC RUBBER, SAE-AMS-P-83461  
 LOCKWASHER: PHOSPHOR BRONZE, ASTM-B103  
 INSULATORS: TEFLON, ASTM-D4894  
 ALL OTHER METAL PARTS: BRASS, ASTM-B16
- 2. FINISHES:**  
 CENTER CONTACT: HARD GOLD PLATE, ASTM-B488  
 ALL OTHER METAL PARTS: SILVER PLATE, ASTM-B700
- 3. ELECTRICAL CHARACTERISTICS:**  
 NOMINAL IMPEDANCE: 50 OHMS  
 WORKING VOLTAGE: 500 VRMS  
 FREQUENCY RANGE: DC TO 10 GHz.
- 4. ENVIRONMENTAL CHARACTERISTICS:**  
 SEAL TO 30 P.S.I.



**MOUNTING HOLE**

SCALE 4:1	
APPROX SURFACE AREA	
1209-17	
USED ON	
REF:	
PRESSURIZED BULKHEAD ADAPTER BNC(F)-N(F)	
DRAWN DRK	DATE 09/12/07
DESIGN JC	DATE 09/27/1977
APPR.	DATE

A Winchester Electronics Company

# GSD

M55339/25-00606