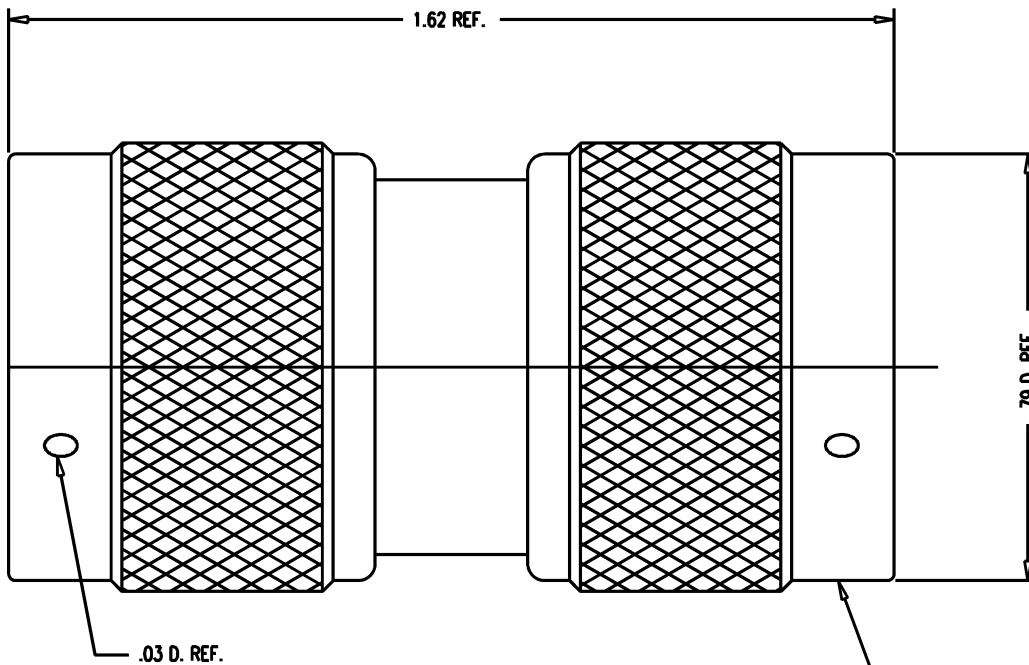


DASH NO.	M CODE	MADE FROM
----------	--------	-----------



STAMP: 91836 M55339/05-00057  
 1209-9 XXXX  
 DATE CODE

- NOTES:
1. INTERFACE PER MIL-STD-348, FIG. 304-1
  2. MATERIALS:  
 GASKETS: SILICONE RUBBER PER ZZ-R-765  
 C-RINGS & OUTER CONTACT: BRONZE, ASTM-B-103  
 INSULATORS: TEFLON, ASTM-D-4894  
 ALL OTHER METAL PARTS: BRASS, ASTM-B16
  3. FINISHES:  
 CONTACT PIN: GOLD PLATE MIL-G-45204B  
 ALL OTHER METAL PARTS: SILVER PLATE QQ-S-365
  4. ELECTRICAL CHARACTERISTICS:  
 MINIMAL IMPEDANCE: 50 OHMS  
 FREQUENCY RANGE: 0 TO 11 GHz  
 VOLTAGE RATING: 1000 VOLTS RMS

- UNLESS OTHERWISE SPECIFIED
- |   |   |   |
|---|---|---|
| 1. TOLERANCES: FRACTIONS & 2 PLACE DECIMALS $\pm$ .010<br>3 PLACE DECIMALS $\pm$ .004 ANGLES $\pm$ 0-30'<br>CONCENTRICITY OF ANY 2 DIAMETERS MAY NOT EXCEED HALF THE SUM OF THEIR TOLERANCES. | 2. REMOVE ALL BURRS, BREAK SHARP EDGES .005 MAX.<br>3. NO FILLETS PERMITTED.<br>4. SURFACE ROUGHNESS 63 MICRONS RMS MAX.<br>5. ALL DIMENSIONS PRIOR TO PLATING.<br>6. ALL PLATING IN ACCORDANCE WITH KER 10004. | 7. ALL LEAD THREADS TO BE CHAMFERED 45- TO ROOT DIAMETER.<br>*CRITICAL DIMENSIONS |
|---|---|---|

GSD

GSD

M55339/05-00057

REVISIONS	
ISSUE	CHANGES
8	CN 37215 A REDRAWN PG 12/06/96

JJS0155

SCALE 4:1
APPROX SURFACE AREA 1209-9
USED ON
REF: ADAPTER, N, M-M
DRAWN PG 12/06/96
DESIGN LI 12/06/96
APPR. DATE
<b>KINGS</b> ELECTRONICS CO., INC. TUCKAHOE, NEW YORK 10707
M55339/05-00057