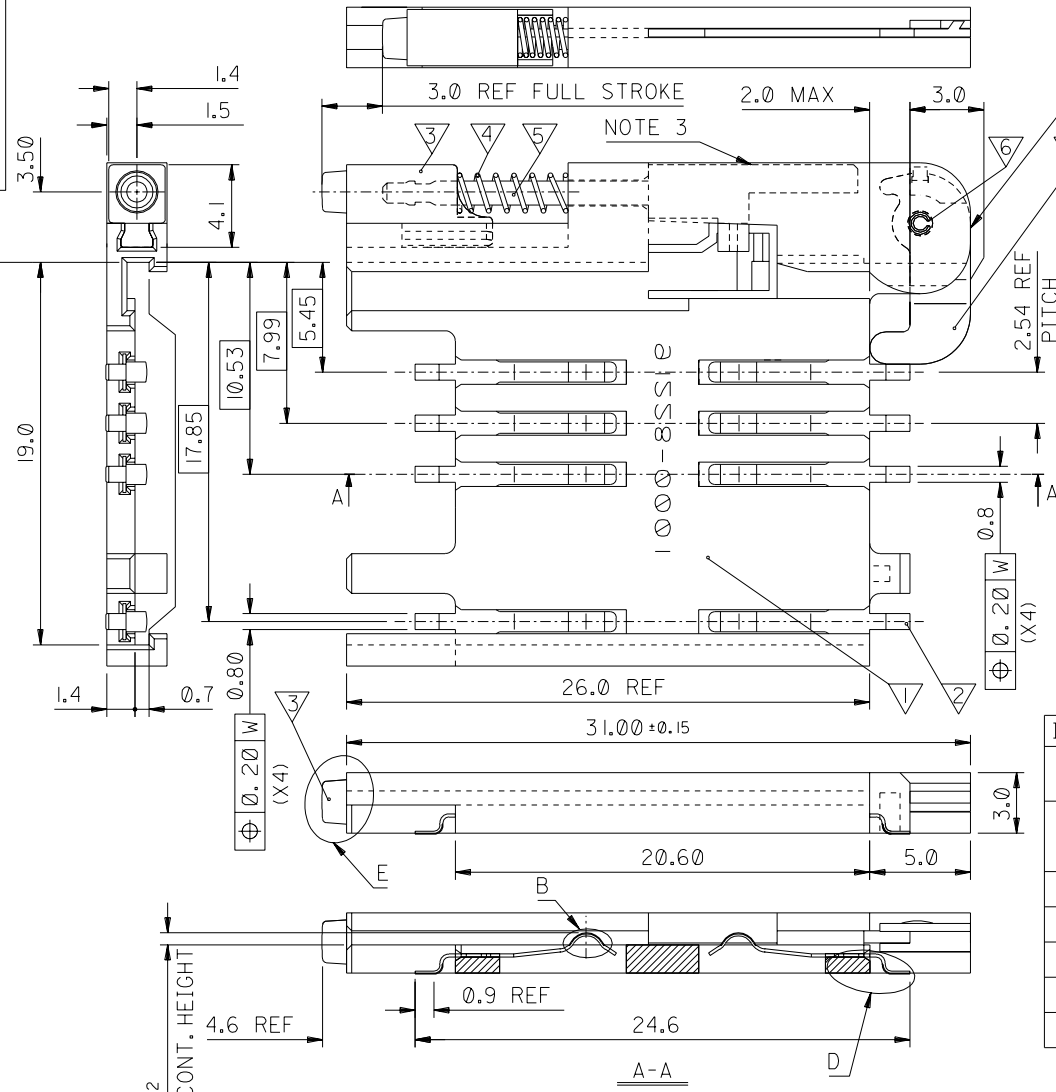


PART NO. 91228-0001
 DWG. NO. SDA-91228



NOTE 3

HSG EDGE

RECOMMENDED PCB LAYOUT

2:1

NOTES:

1. SEE PRODUCT SPECIFICATION PS-99020-0071.
2. PACKING: TAPE AND REEL, FOR DETAIL SEE SDA-91228-9001, SHT.1
3. PUSH ROD/LEVER MUST NOT PROTRUDE BEYOND HOUSING EDGE IN THIS AREA.
4. TAILS ON EACH SIDE OF CONNECTOR TO LIE WITHIN 0.12mm OF EACH OTHER

ITEM	COMPONENT	QTY	MATERIAL
1	HOUSING	1	LIQUID CRYSTAL POLYMER (LCP) 30% GLASS FILL, UL94 V-0, COLOUR: BLACK
2	TERMINAL	8	0.15 PHOSPHOR BRONZE. 0.1um MIN Au OVER Pd/Ni IN CONTACT AREA 2.5um MIN Sn/Pb ON SMT TAILS.
3	PUSH BUTTON	1	GF NYLON 46, YELLOW
4	COIL SPRING	1	0.25 STAINLESS STEEL
5	PUSH ROD	1	0.4 STAINLESS STEEL
6	C-PIN	1	STEEL
7	LEVER	1	0.4 STAINLESS STEEL

THIRD ANGLE PROJECTION

REVISE ONLY ON CAD SYSTEM

ADDED SHEET 5 ECN E2000-1136 01/04/10 FD	REVISIONS	DRWG BY JM	CAD/CAM FILENAME S91228X1 DGN
DIMENSIONS SHOWN (METRIC) INCH UNLESS OTHERWISE SPECIFIED TOLERANCES: ANGULAR ± 2°		CHK'D BY	THIS DRAWING CONTAINS INFORMATION THAT IS PROPRIETARY TO MOLEX INC. & SHOULD NOT BE USED WITHOUT WRITTEN PERMISSION
INCH (METRIC)		APP'D BY	TITLE SIM PCB CONNECTOR
3 PLACE ±		SCALE	MOLEX EUROPE
2 PLACE ±	± 0.05	4:1	SHEET NO. DATE 1 OF 5 96/09/16
1 PLACE	± 0.10		PART NO. DWG NO. SIZE 91228-0001 SDA-91228 B
DESIGN DIMENSION (PRIMARY) <input checked="" type="checkbox"/> (MM) <input type="checkbox"/> IN.			
EQUIVALENT DIMENSION (SECONDARY) <input type="checkbox"/> (MM) <input type="checkbox"/> IN.			